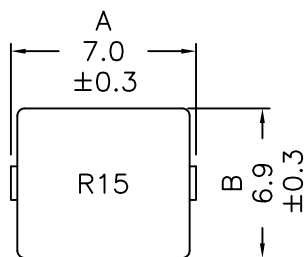
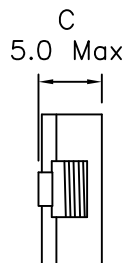


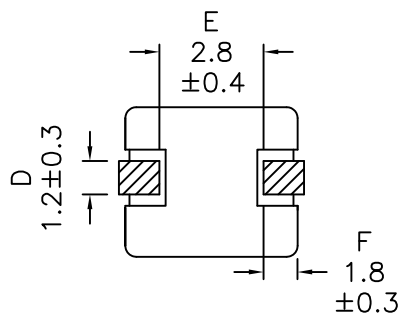
1. Mechanical Dimensions:



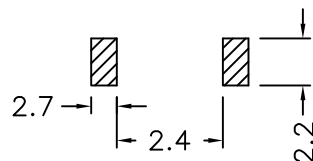
Top view



Side view

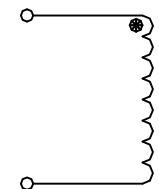


Bottom view



Typical Pad Layout

2. Schematic:



3. Electrical Specifications:

OCL: 0.15uH±20% @100KHz 0.25V, 0.0A_{dc}

Q: 5 Min @100KHz 0.1V

DCR: 2.500 mOhms Max

I_{rms}: 26.0A_{dc} (Based on 40°C Temp Rise Typ)

I_{sat}: 52.0A_{dc} (Based on 20% Typ drop in OCL)

Notes:

1. Solderability: Leads shall meet MIL-STD-202G, Method 208H for solderability.
2. Flammability: UL94V-0
3. ASTM oxygen index: > 28%
4. Insulation System: Class F 155°C. UL file E151556
5. Operating Temperature Range: All listed parameters are to be within tolerance from -40°C to +85°C
6. Storage Temperature Range: -55°C to +125°C
7. Aqueous wash compatible
8. SMD Lead Coplanarity: ±0.004"(0.102mm)
9. Electrical and mechanical specifications 100% tested
10. RoHS Compliant Component

DOC. REV: A/1

XFMRs Inc www.XFMRs.com		Title: MAGNETICALLY SHIELDED HIGH CURRENT INDUCTOR	
UNLESS OTHERWISE SPECIFIED TOLERANCES: .xx ±0.25 Dimensions in MM		P/N: XFHCL6MD-R15M	REV. A
		DWN.	Yuan
		CHK.	YK Liao
SHEET 1 OF 1		APP.	BSJ
			Oct-04-12
			Oct-04-12
			Oct-04-12

PROPRIETARY

Document is the property of XFMRs Group & is not allowed to be duplicated without authorization.