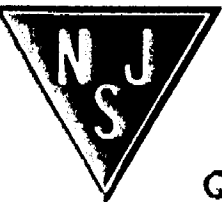
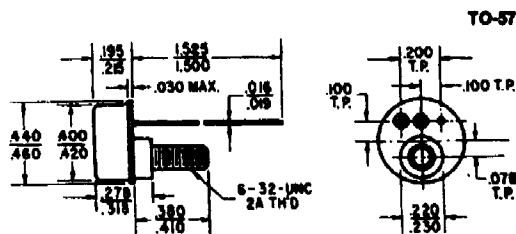


## POWER TRANSISTORS

| TYPE NO. | PT @ 25°C | MAXIMUM RATINGS   |                   |                   |                | h <sub>FE</sub> |     | Sat Voltages @ |                 |                 |                 | Test Conditions |                |      | I <sub>ESD</sub> ma |
|----------|-----------|-------------------|-------------------|-------------------|----------------|-----------------|-----|----------------|-----------------|-----------------|-----------------|-----------------|----------------|------|---------------------|
|          |           | BV <sub>CEO</sub> | BV <sub>CBO</sub> | BV <sub>ESD</sub> | I <sub>C</sub> | MIN             | MAX | I <sub>C</sub> | V <sub>CE</sub> | V <sub>CE</sub> | V <sub>BE</sub> | I <sub>C</sub>  | I <sub>B</sub> |      |                     |
|          |           | V                 | V                 | V                 | A              |                 |     | A              | V               | V               | V               | A               | A              |      |                     |
| 2N1047   | 40        | 80                | 80                | 6                 | .5             | 12              | 36  | .5             | 10              | 7.5             | 6.0             | .5              | .1             | 250  |                     |
| 2N1048   | 40        | 120               | 120               | 6                 | .5             | 12              | 36  | .5             | 10              | 7.5             | 6.0             | .5              | .1             | 250  |                     |
| 2N1049   | 40        | 80                | 80                | 6                 | .5             | 30              | 90  | .5             | 10              | 7.5             | 6.0             | .5              | .1             | 250  |                     |
| 2N1050   | 40        | 120               | 120               | 6                 | .5             | 30              | 90  | .5             | 10              | 7.5             | 6.0             | .5              | .1             | 250  |                     |
| †2N1047A | 40        | 80                | 80                | 10                | .5             | 12              | 36  | .5             | 10              | 7.5             | 6.0             | .5              | .1             | 250  |                     |
| †2N1048A | 40        | 120               | 120               | 10                | .5             | 12              | 36  | .5             | 10              | 7.5             | 6.0             | .5              | .1             | 250  |                     |
| †2N1049A | 40        | 80                | 80                | 10                | .5             | 30              | 90  | .5             | 10              | 7.5             | 6.0             | .5              | .1             | 250  |                     |
| †2N1050A | 40        | 120               | 120               | 10                | .5             | 30              | 90  | .5             | 10              | 7.5             | 6.0             | .5              | .1             | .010 |                     |
| 2N1047B  | 40        | 80                | 80                | 10                | .75            | 12              | 36  | .5             | 10              | 2.0             | 1.6             | .5              | .1             | .010 |                     |
| 2N1048B  | 40        | 120               | 120               | 10                | .75            | 12              | 36  | .5             | 10              | 2.0             | 1.6             | .5              | .1             | .010 |                     |
| 2N1049B  | 40        | 80                | 80                | 10                | .75            | 30              | 90  | .5             | 10              | 2.0             | 1.6             | .5              | .1             | .010 |                     |
| 2N1050B  | 40        | 120               | 120               | 10                | .75            | 30              | 90  | .5             | 10              | 2.0             | 1.6             | .5              | .1             | .010 |                     |
| 2N1690   | 40        | 80                | 80                | 10                | .5             | 20              | 60  | .5             | 10              | 7.5             | 6.0             | .5              | .1             | 250  |                     |
| 2N1691   | 40        | 120               | 120               | 10                | .5             | 20              | 60  | .5             | 10              | 7.5             | 6.0             | .5              | .1             | 250  |                     |
| 2N1768   | 40        | 60                | 40                | 12                | 3.0            | 35              | 100 | .75            | 4               | .75             | 2.5             | .5              | .1             | .015 |                     |
| 2N1769   | 40        | 100               | 55                | 12                | 3.0            | 35              | 100 | .75            | 4               | .75             | 2.5             | .5              | .1             | .015 |                     |



NJ Semi-Conductors reserves the right to change test conditions, parameter limits and package dimensions without notice. Information furnished by NJ Semi-Conductors is believed to be both accurate and reliable at the time of going to press. However, NJ Semi-Conductors assumes no responsibility for any errors or omissions discovered in its use. NJ Semi-Conductors encourages customers to verify that datasheets are current before placing orders.

Quality Semi-Conductors