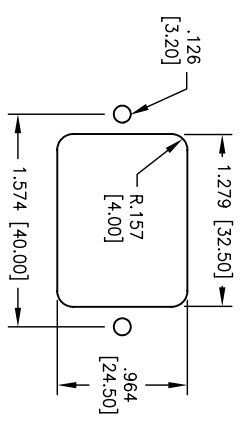
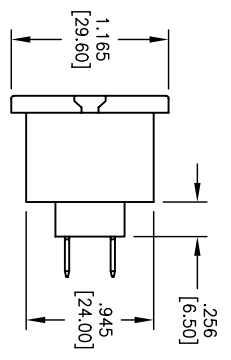
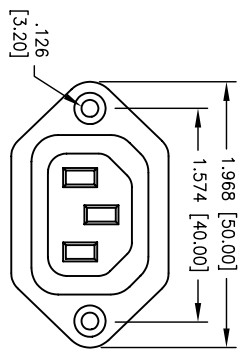
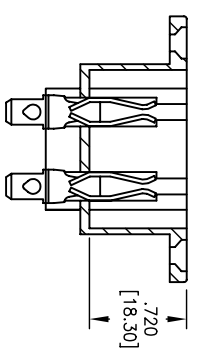
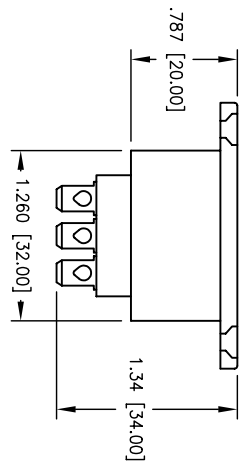


Rev	AWO #	Description	Date	Appr
-		RELEASED	8/13/04	

APPROVED: _____ TITLE: _____
 DATE: _____



RECOMMENDED
 PANEL CUT-OUT



TERMINAL OPTIONS	
1	.187 Q.C.
2	.250 Q.C.
5	.157 Solder

SPECIFICATIONS:

Material:
 Insulator: PBT, glass reinforced, rated UL 94V-0
 Insulator color: Black
 Contacts: Phosphor Bronze
 Plating:
 Nickel over copper underplate
Electrical:
 Operating voltage: 250 VAC max
 Current rating: UL & CSA: 15 Amps max
 VDE: 10 Amps max
 Insulation resistance: 100 Mohms min @ 500 VDC
 Dielectric withstanding voltage: 2000 VAC for 1 minute
 Temperature Rating:
 Operating temperature: -25°C to +70°C

UNLESS OTHERWISE SPECIFIED ALL DIMENSIONS ARE INCHES [MM] TOLERANCES: EXCEPT AS NOTED	
INCHES	HOLES
.X ± .10	ØX ± .10
.XX ± .020	ØXXX ± .015
.XXX ± .015	ØXXXX ± .010
APPROVALS	DATE
DRAWN SS	8/13/04
CHECKED	
APPROVED	

ADAM TECH
 909 Rahway Avenue, Union, NJ 07083
 Phone: 908-687-5000 Fax: 908-687-5710

TITLE: IEC CONNECTOR, FEMALE OUTLET
 IEC, C13, FLANGE MOUNT

SIZE	PART NO.	REV.
X	IEC-B-X	-
REF.	SCALE: NTS	SHEET 1 OF 1