

DETAILS

Product Number	F16002_MIRELLA-G2-WW
Family	Mirella
Type	Reflector
Color	metal
Diameter	49,9 mm
Height	23,57 mm
Style	round
Optic Material	PC
Holder Material	
Fastening	socket
Status	production ready
ROHS Compliant	Yes
Date Updated	29/08/2017

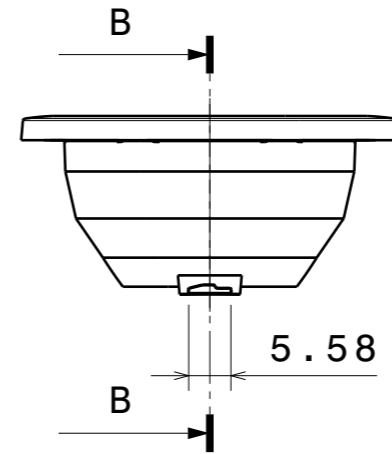
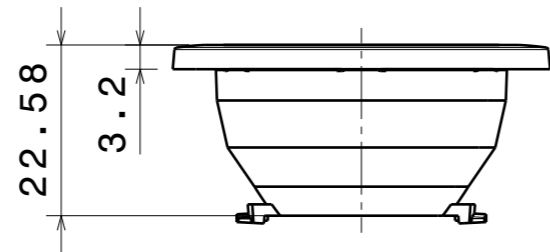
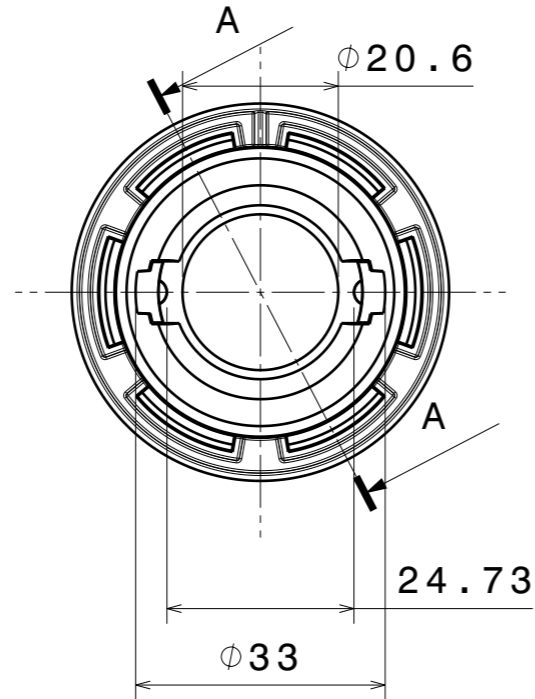
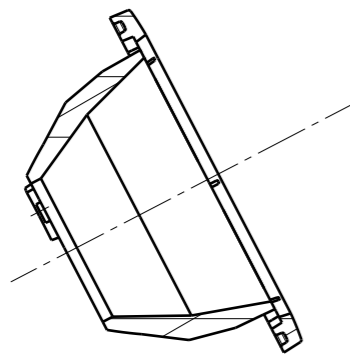


OPTICAL PROPERTIES

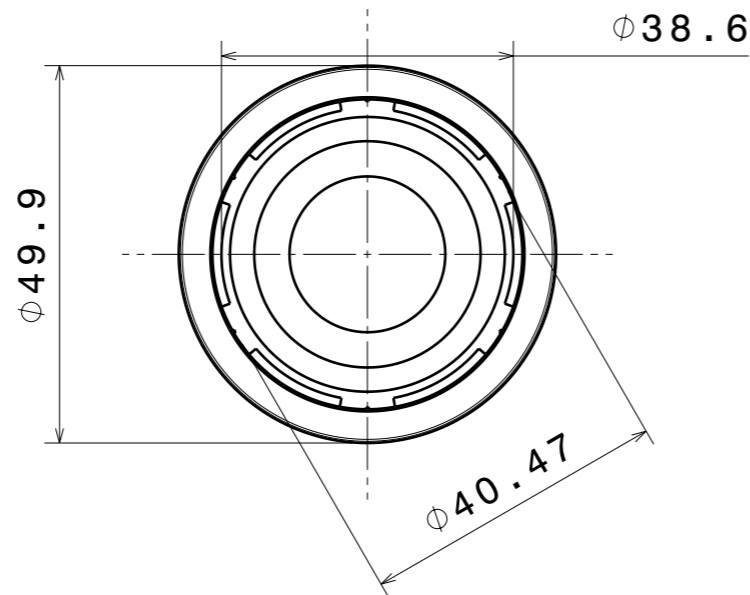
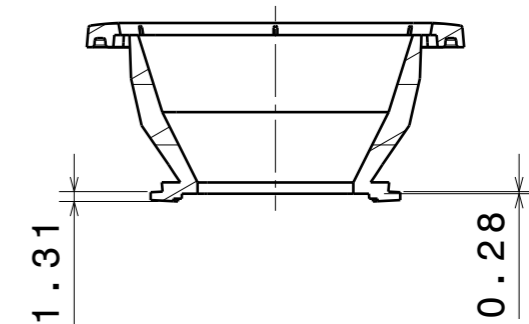
LED	Viewing Angle	Light Beam	Efficiency	cd/lm	Connector
VERO10	55 deg	Very Wide	85 %	1.100	LEDiL: F15616_HEKLA-SOCKET-F
Vesta TW 9mm (12W)	46 deg	Very Wide	77 %	1.200	Bender Wirth: 490 Typ L8
VERO13	sim: 53	Very Wide	sim: 83 %	sim: 1.100	LEDiL: C16142_HEKLA-SOCKET-K
CLL02x/CLU02x (LES10)	sim: 0	Very Wide	-	sim: 0.000	-
CLU700/701	44 deg	Very Wide	85 %	1.300	LEDiL: F15255_HEKLA-SOCKET-C
CLC020 Series (Dim-To-Warm)	49 deg	Very Wide	77 %	1.100	LEDiL: C16142_HEKLA-SOCKET-K
CLU710/711	53 deg	Very Wide	80 %	1.000	LEDiL: F15859_HEKLA-SOCKET-I
CXA/B 13xx	43 deg	Very Wide	86 %	1.380	LEDiL: F15956_HEKLA-SOCKET-J
LUXEON CoB 1202/1203	56 deg	Very Wide	83 %	1.000	LEDiL: F15858_HEKLA-SOCKET-H
Solericq S9	NA deg	Very Wide	91 %	1.500	LEDiL: F15255_HEKLA-SOCKET-C
LC020C	56 deg	Very Wide	83 %	1.000	LEDiL: F15848_HEKLA-SOCKET-G
SLE G6 LES10	sim: 58	Very Wide	sim: 88 %	sim: 1.080	LEDiL: F15255_HEKLA-SOCKET-C

H G F E D C B A

SECTION A-A



SECTION B-B



INDEX	PART NO	DESCRIPTION	MATERIAL	COLOUR
1	F16002	MIRELLA-G2-WW	PC	Mirror

Tolerances if not otherwise shown
 According to DIN ISO 2768-1
 Linear measures:
 Up to 30mm class M, otherwise class K.
 According to DIN ISO 2768-2
 Form and position: class K
 Control for SPC marked dimensions.



LediL Oy
 Salorankatu 10
 FIN 24240 SALO
 Finland

FIRST ANGLE PROJECTION:

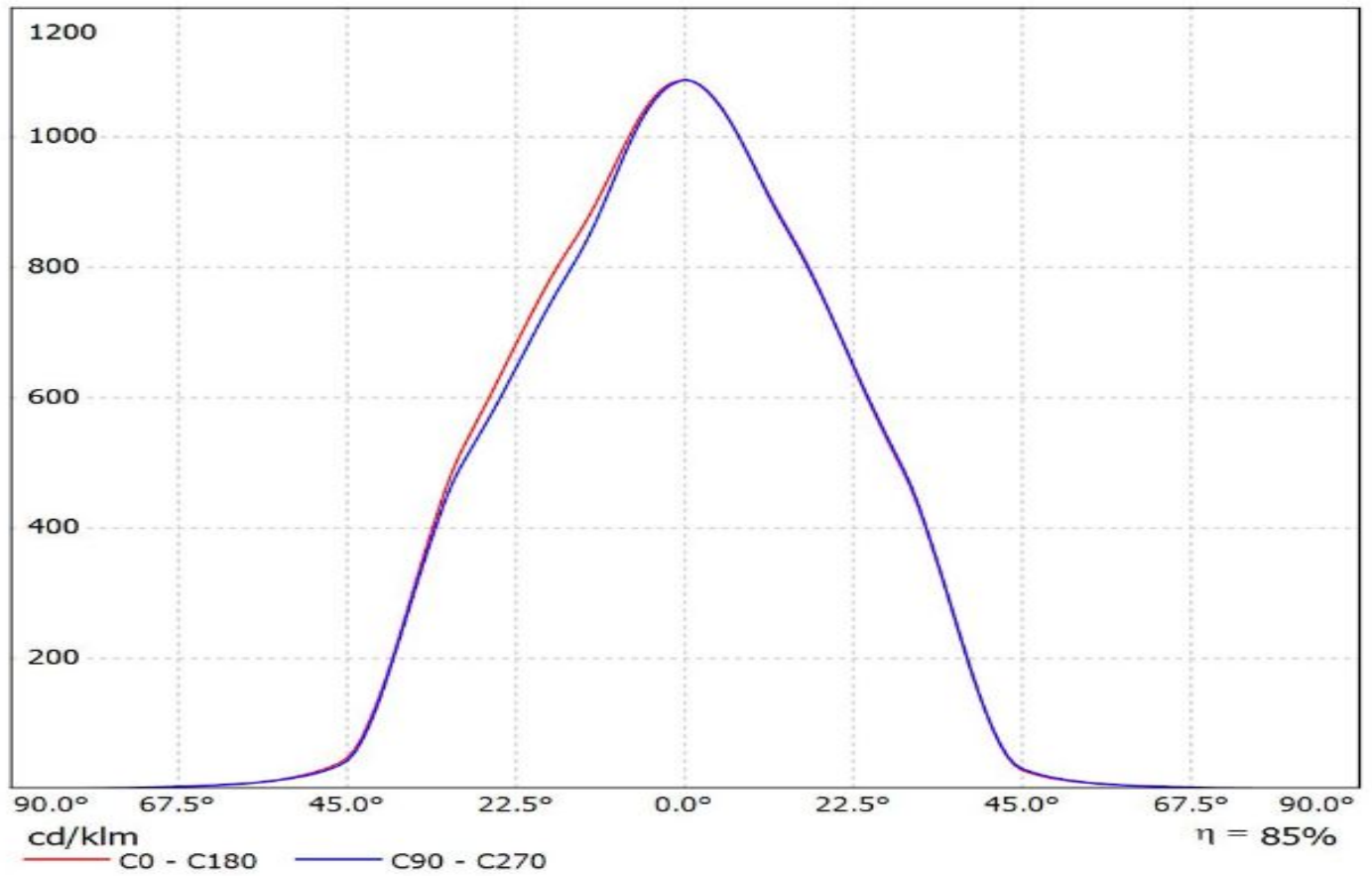
DRAWING TITLE
F16002_MIRELLA-G2-WW

This drawing is the property
 of LEDiL Oy. It may not be
 reproduced, copied or
 communicated without a written
 agreement with LEDiL Oy.

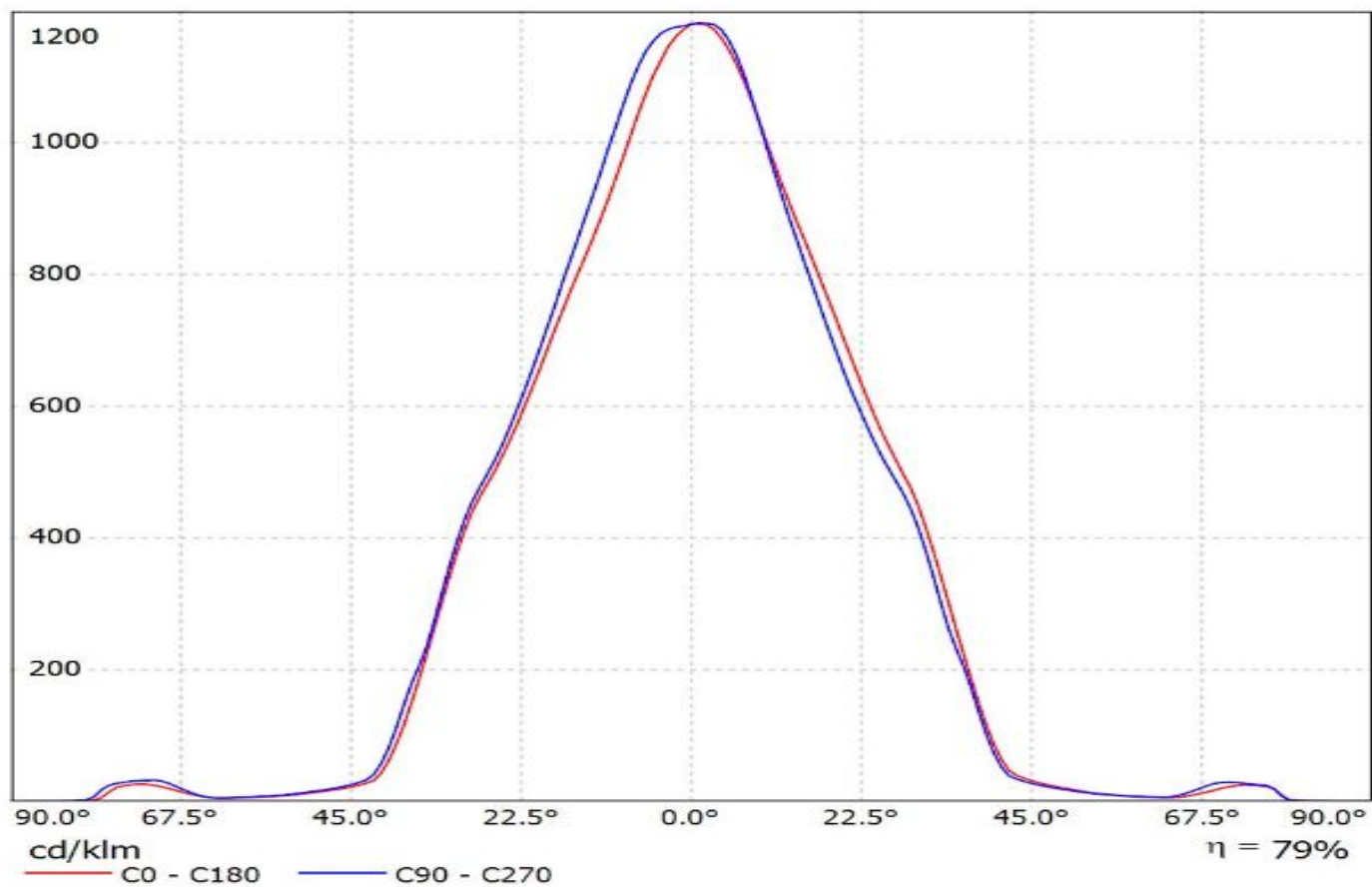
SIZE	PART NUMBER			
A3	F16002			
SCALE	1:1	WEIGHT	4.7 g	SHEET 1/1

H G B A

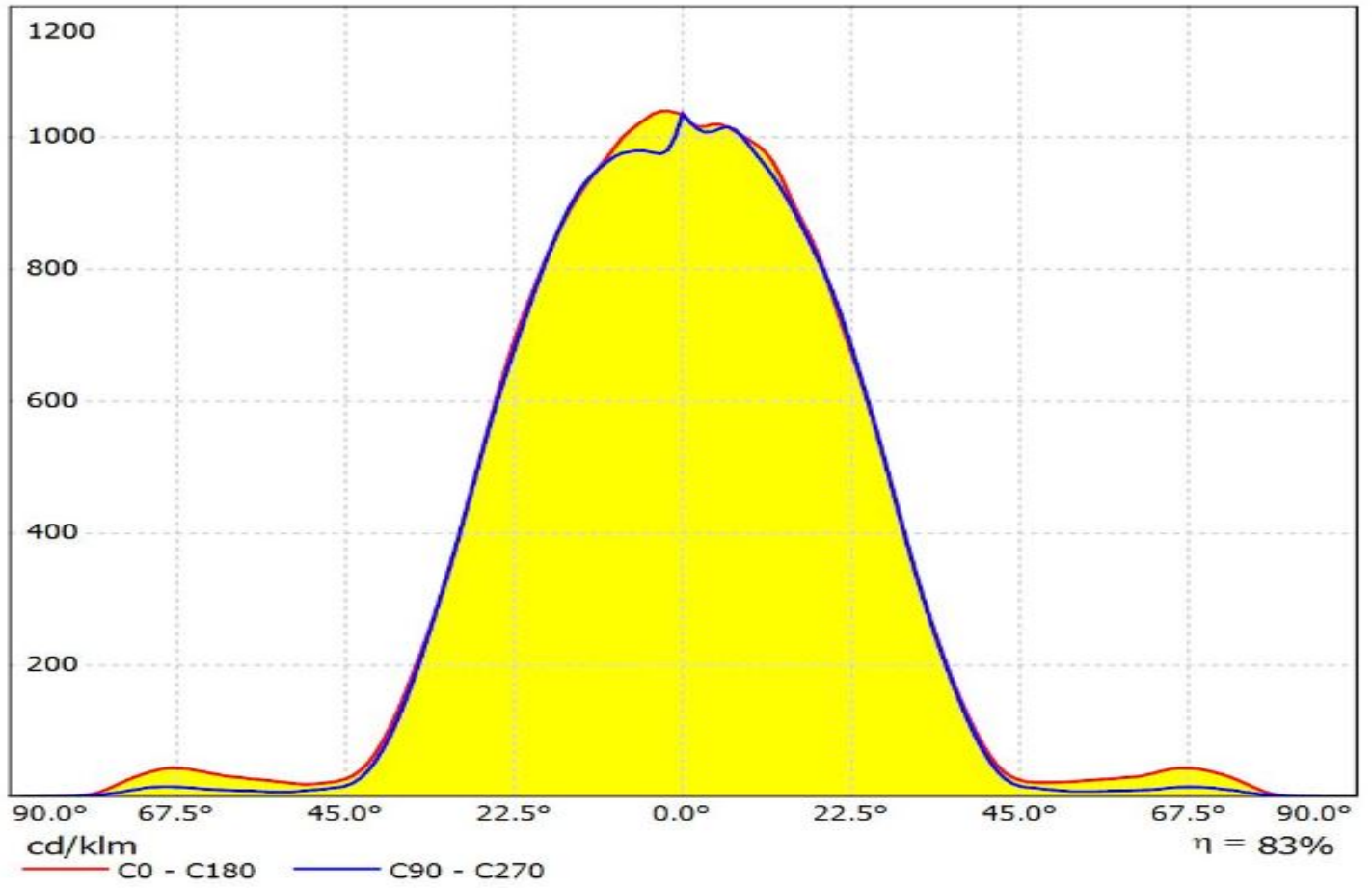
Luminaire: LEDiL Oy F16002_MIRELLA-G2-WW_(VERO10+F15616)
Lamps: 1 x Bridgelux_VERO10_(30-E1000B-Y2)+F15616_HEKLA-SOCKET-F_815.324lm@250mA_CCT=3000K_P=6.48491W_I=0.25A



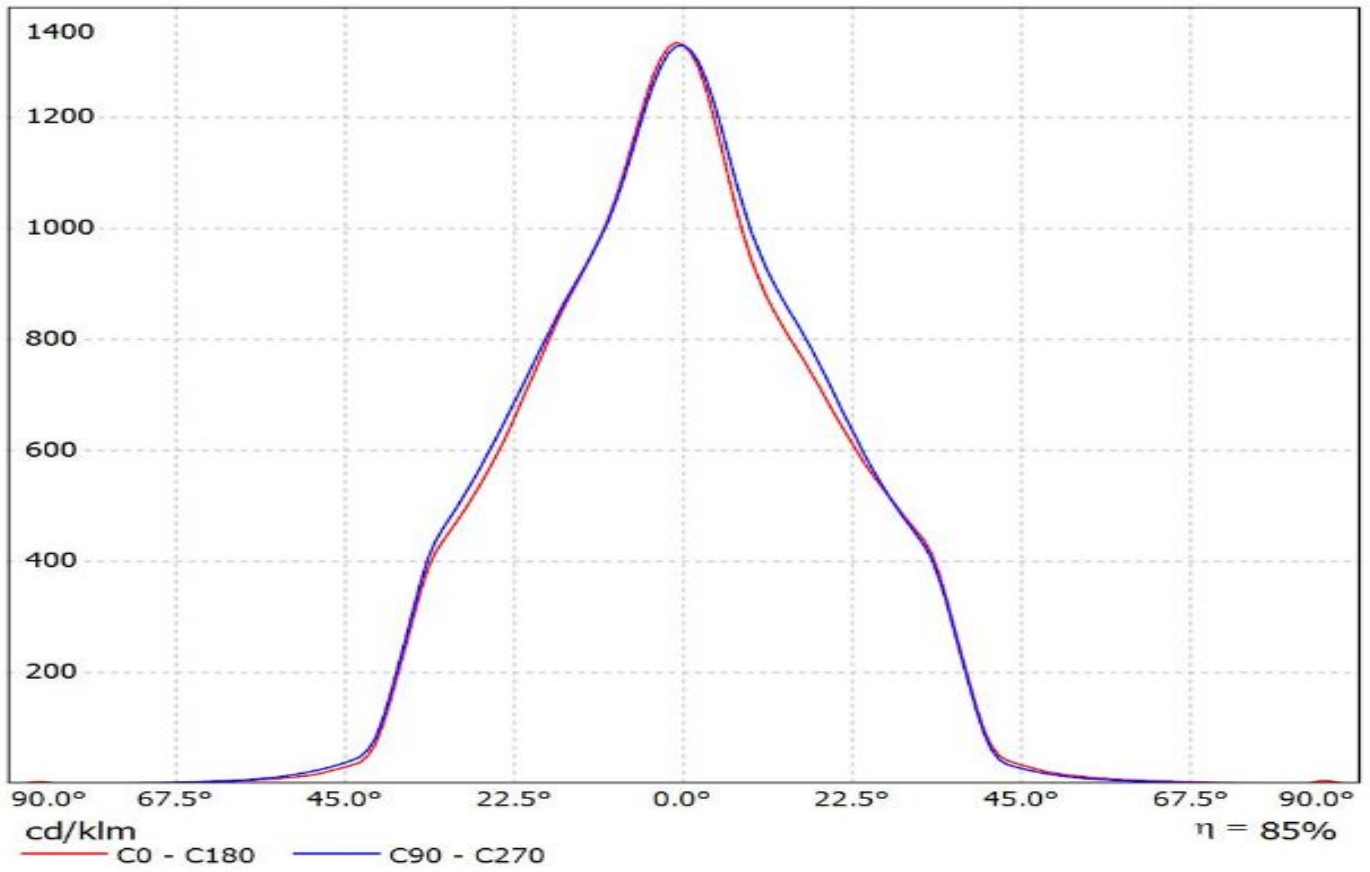
Luminaire: Ledil F16002_MIRELLA-G2-WW_(Vesta_DTW_9mm+F16142+BW)
Lamps: 1 x Bridgelux_Vesta_DTW_9mm_(12W)_(BXRV-DR-1830-H-1000-B-13)+_F16142_Hekla-K+BW_490_TypL8_1018.44_lm@350mA_P=11.6974W_I=0.350A



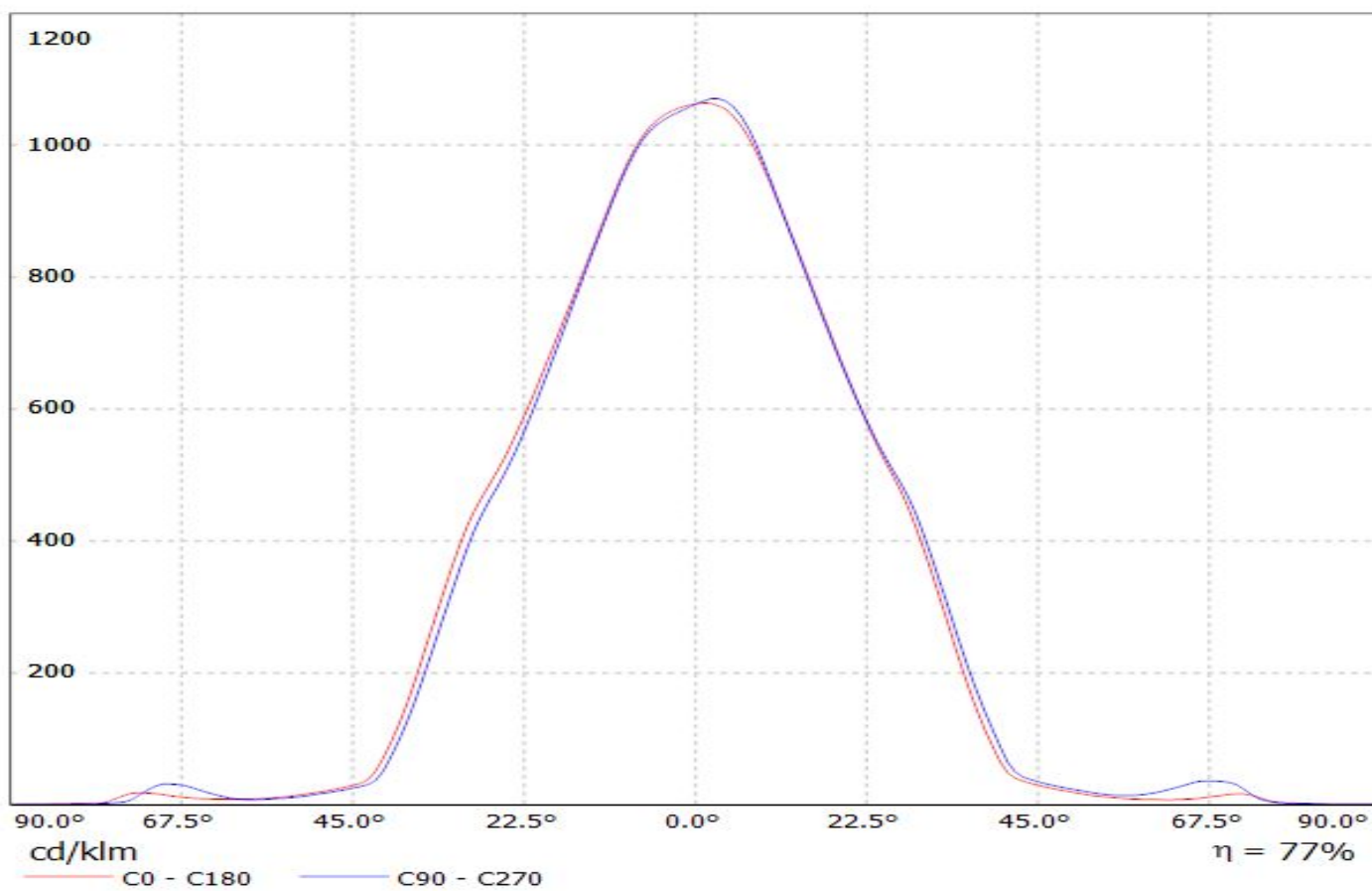
Luminaire: Ledil Oy F16002_MIRELLA-G2-WW_C16142_HEKLA-SOCKET-K_SIMULATED
Lamps: 1 x BRIDGELUX_VERO13



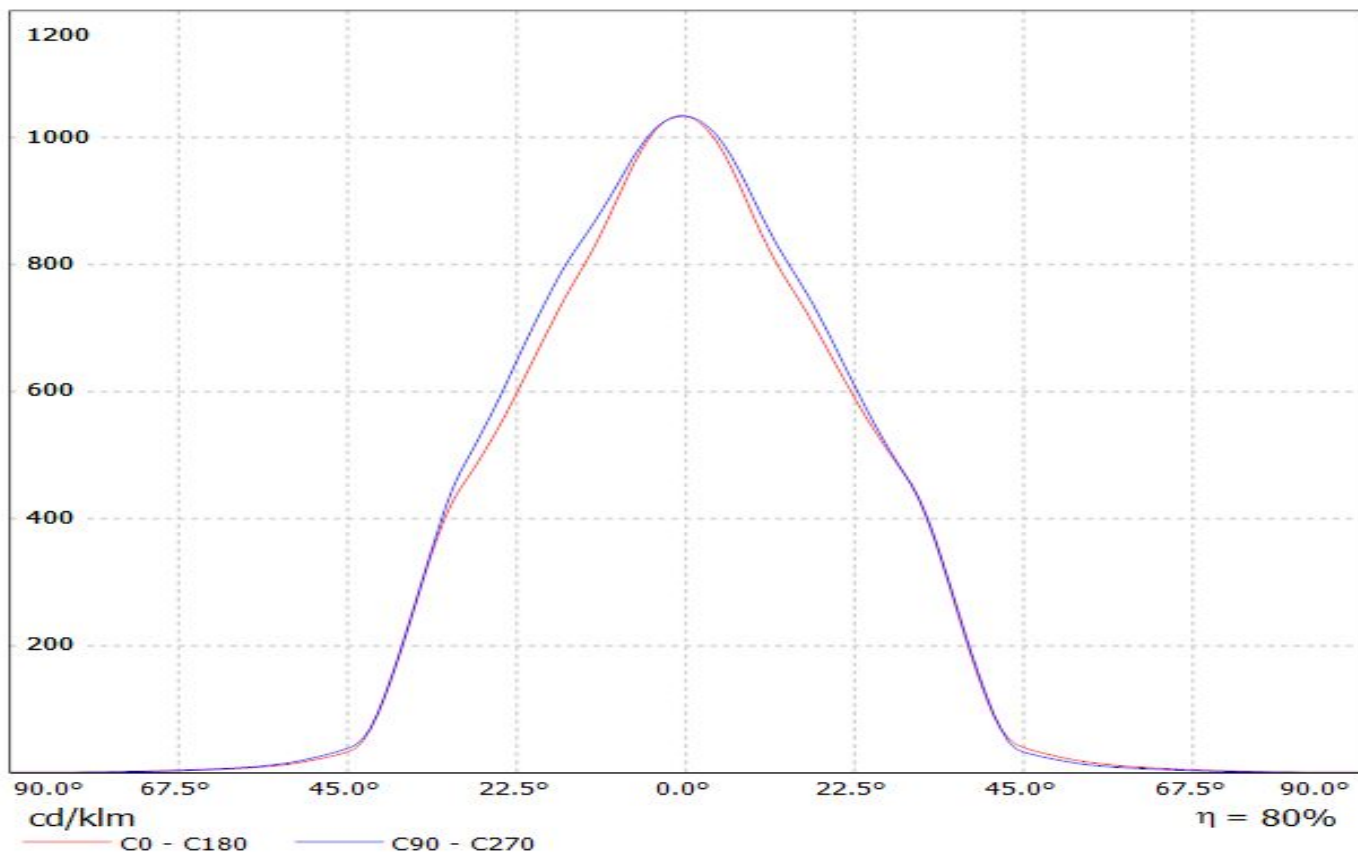
Luminaire: Ledil F16002_MIRELLA-G2-WW (CLU700 + F15255)
Lamps: 1 x Citizen_CLU700 (CLU700-1002B8-303H5G3) + F15255_HEKLA-SOCKET-C_705.572lm@250mA_P=7.5065W_I=0.250A



Luminaire: LEDiL Oy F16002_MIRELLA-G2-WW_(CLC020_057A5)
Lamps: 1 x Citizen_CLC020-057A5_913.53lm@360mA_P=12.9104W_I=0.25A

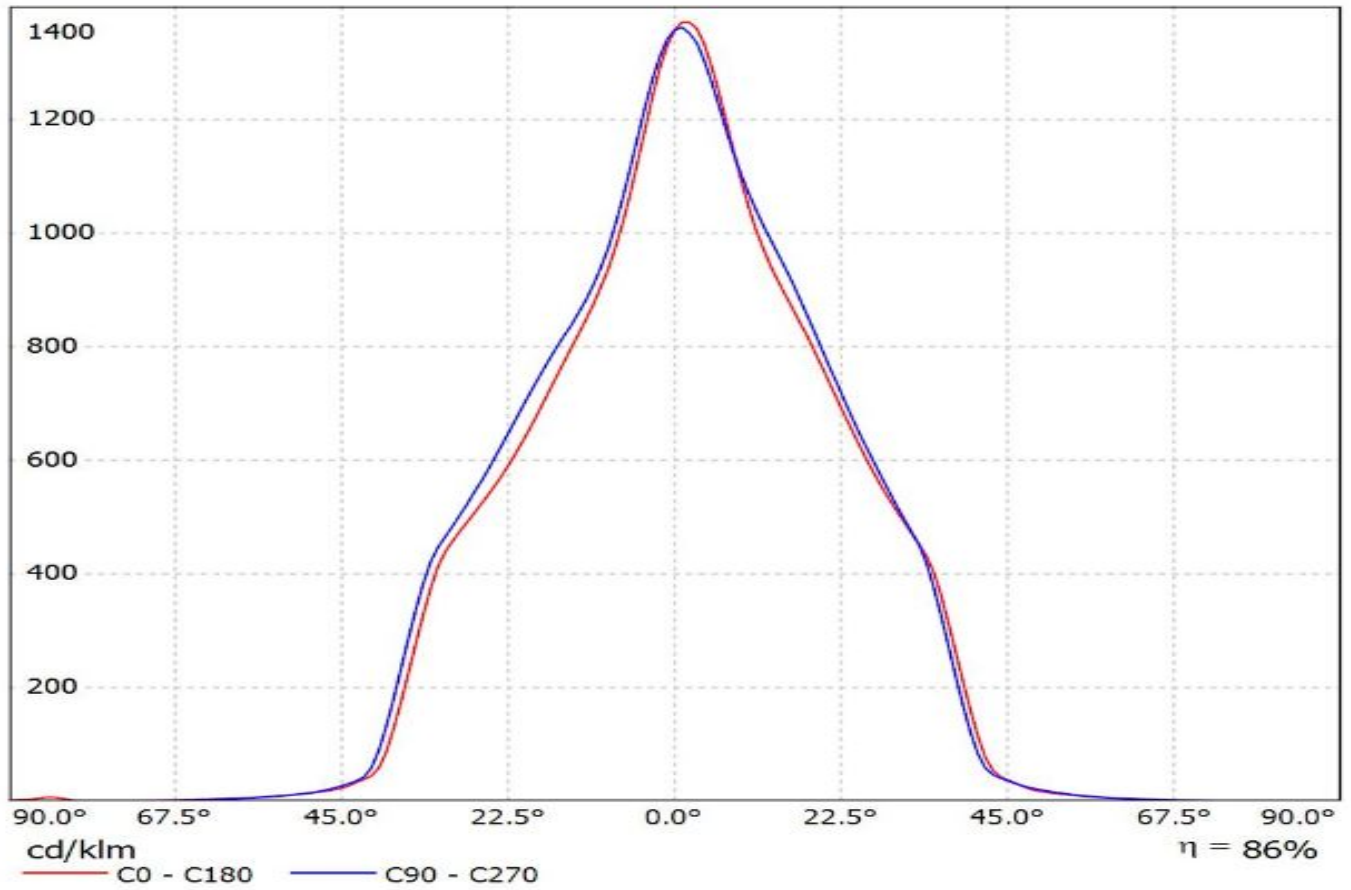


Luminaire: LEDiL Oy F16002_MIRELLA-G2-WW_(CLU710)+F15859
Lamps: 1 x Citizen_CLU710_(1204B8-273M2G1)
+F15859_1101.12lm@250mA_CCT=2700K_P=8.52542W_U=34.112V

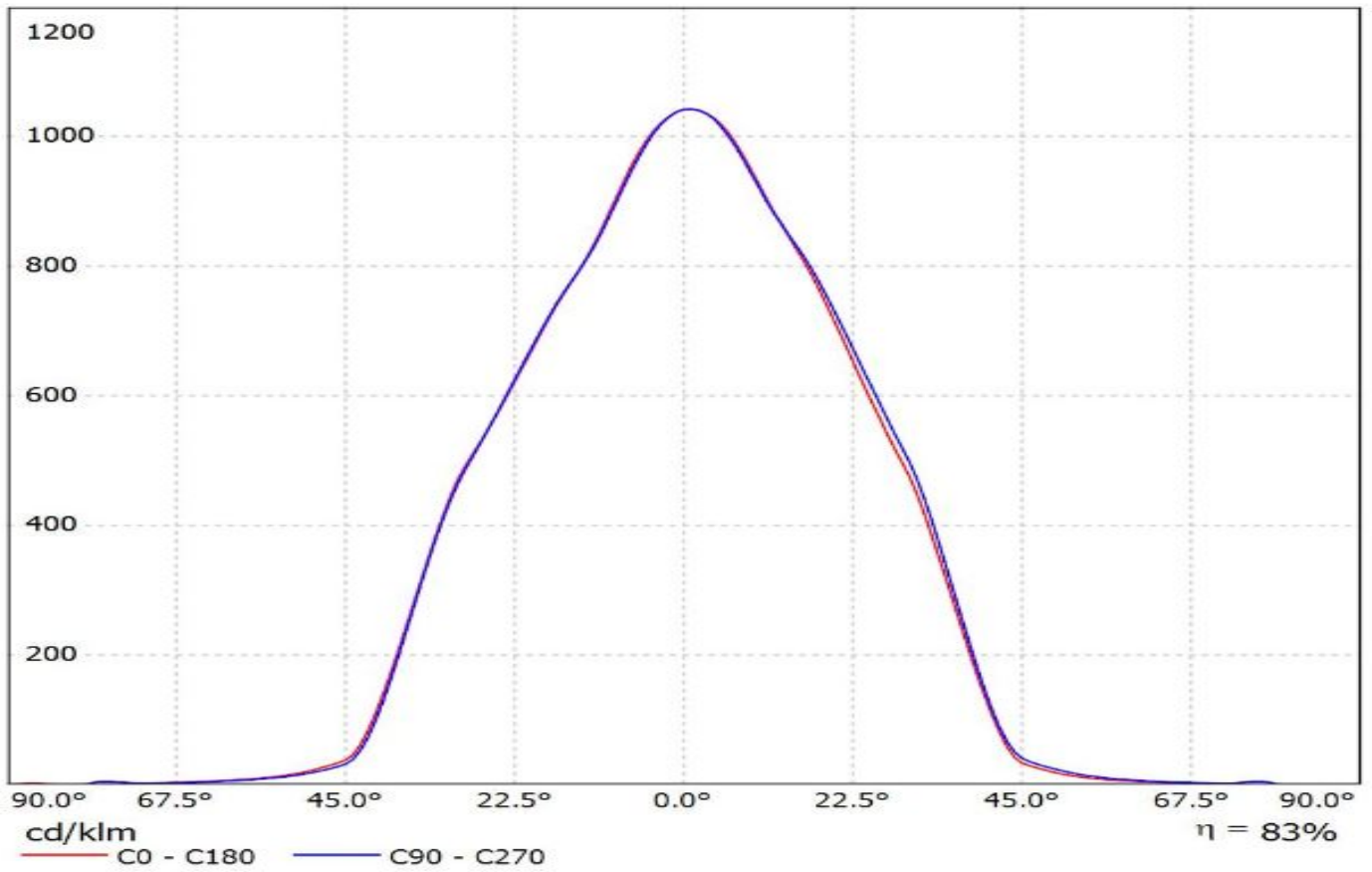


Luminaire: Ledil F16002_MIRELLA-G2-WW_(CXA1310+_F15956)

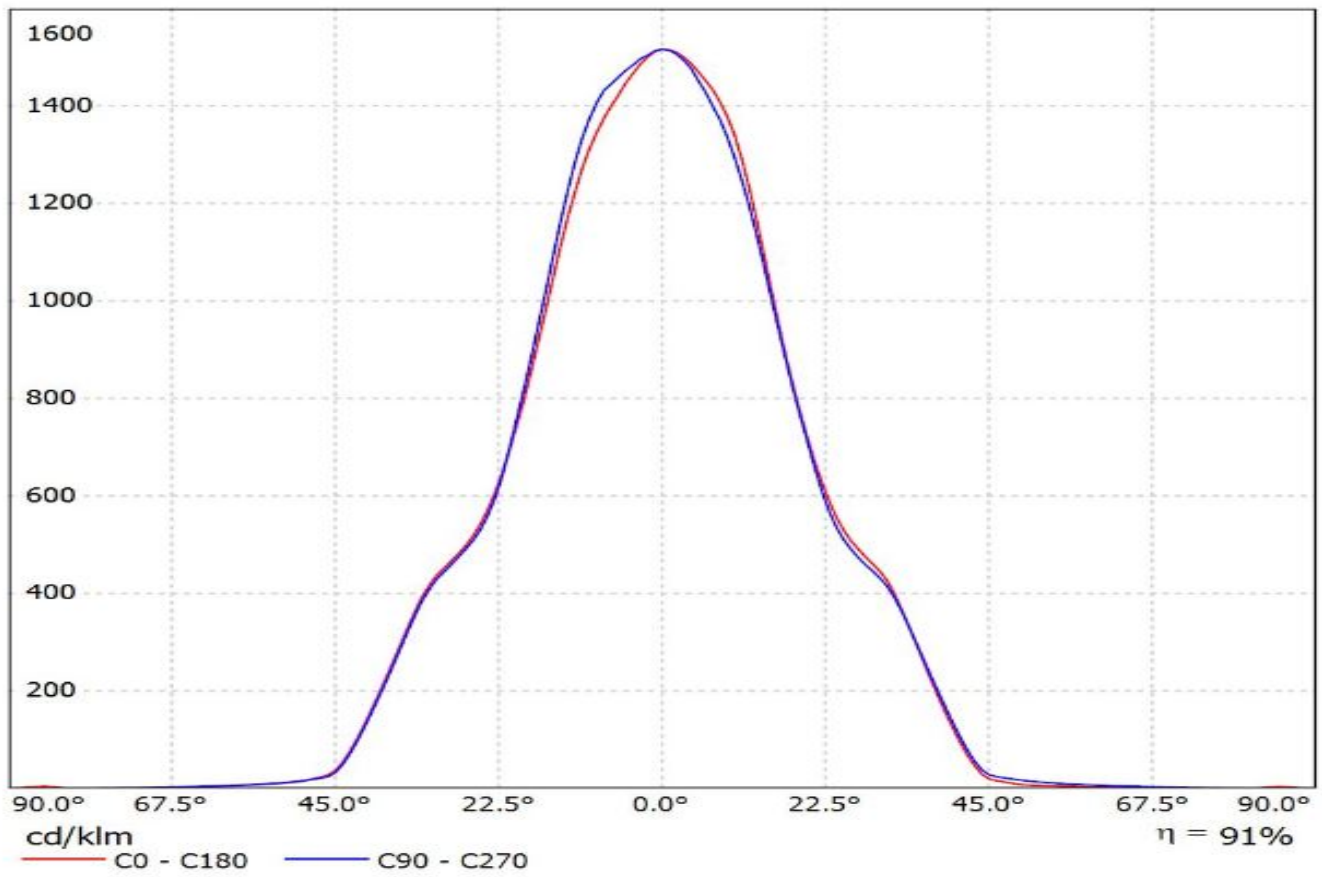
Lamps: 1 x Cree_CXA1310_(CXA1310-30H-G4-F0Y-00001)+_F15956_HEKLA-SOCKET-J_345.939lm@250mA_P=4.27579W_I=0.250A



Luminaire: Ledil F15560_MIRELLA-G2-W_(CoB_1203+_F15858)
Lamps: 1 x Luxeon_CoB_1203_(LHC1-3080-1203)+_F15858_HEKLA-SOCKET-
H_993.26lm@250mA_P=8.71526W_I=0.250A

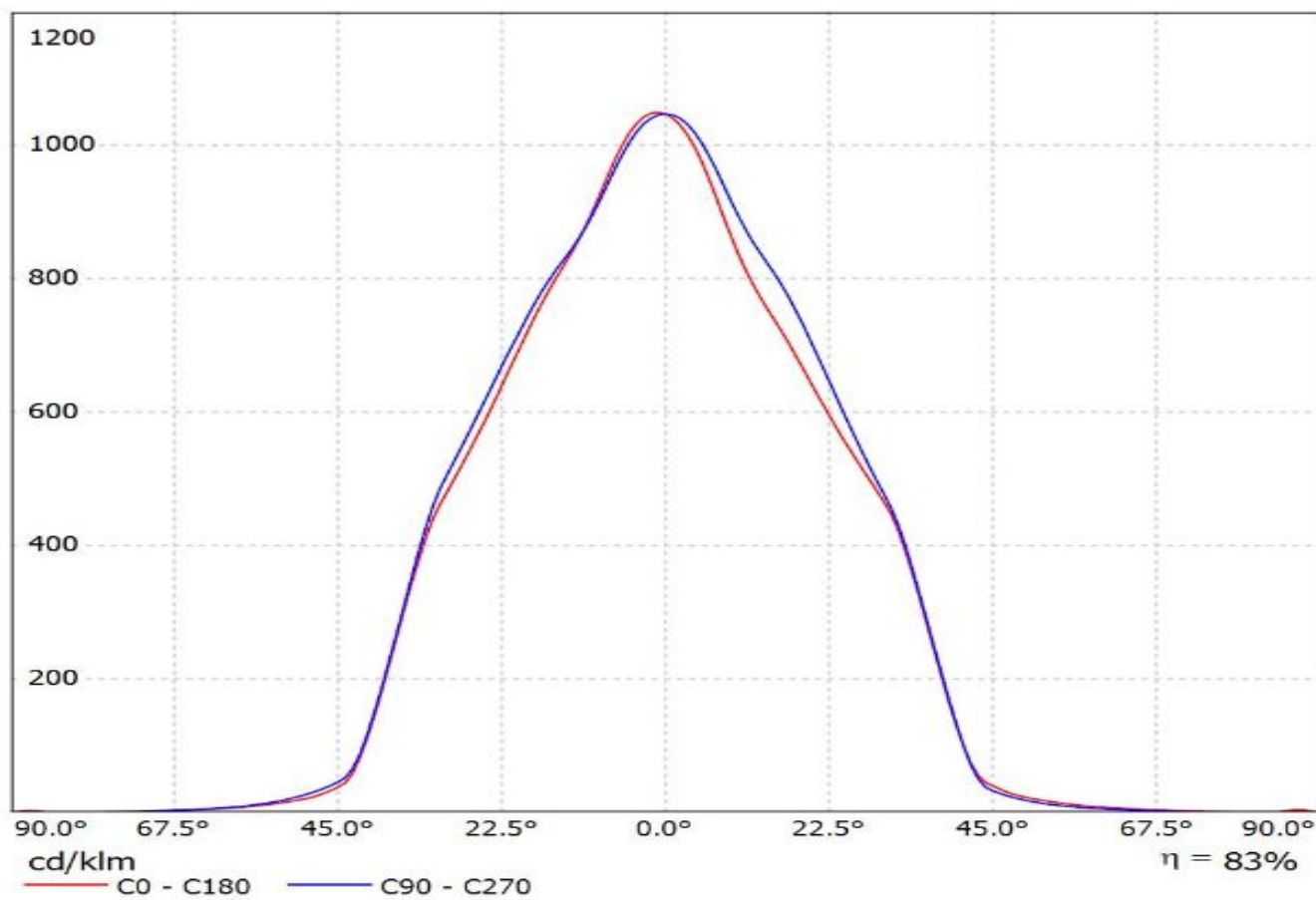


Luminaire: Ledil F16002_MIRELLA-G2-WW_(Soleriq_S9+_F15255)
Lamps: 1 x Osram_Soleriq_S9_(GW_KAFHB3.EM)+_F15255_HEKLA-SOCKET-C_1182.71lm@250mA_P=8.81997W_I=0.250A

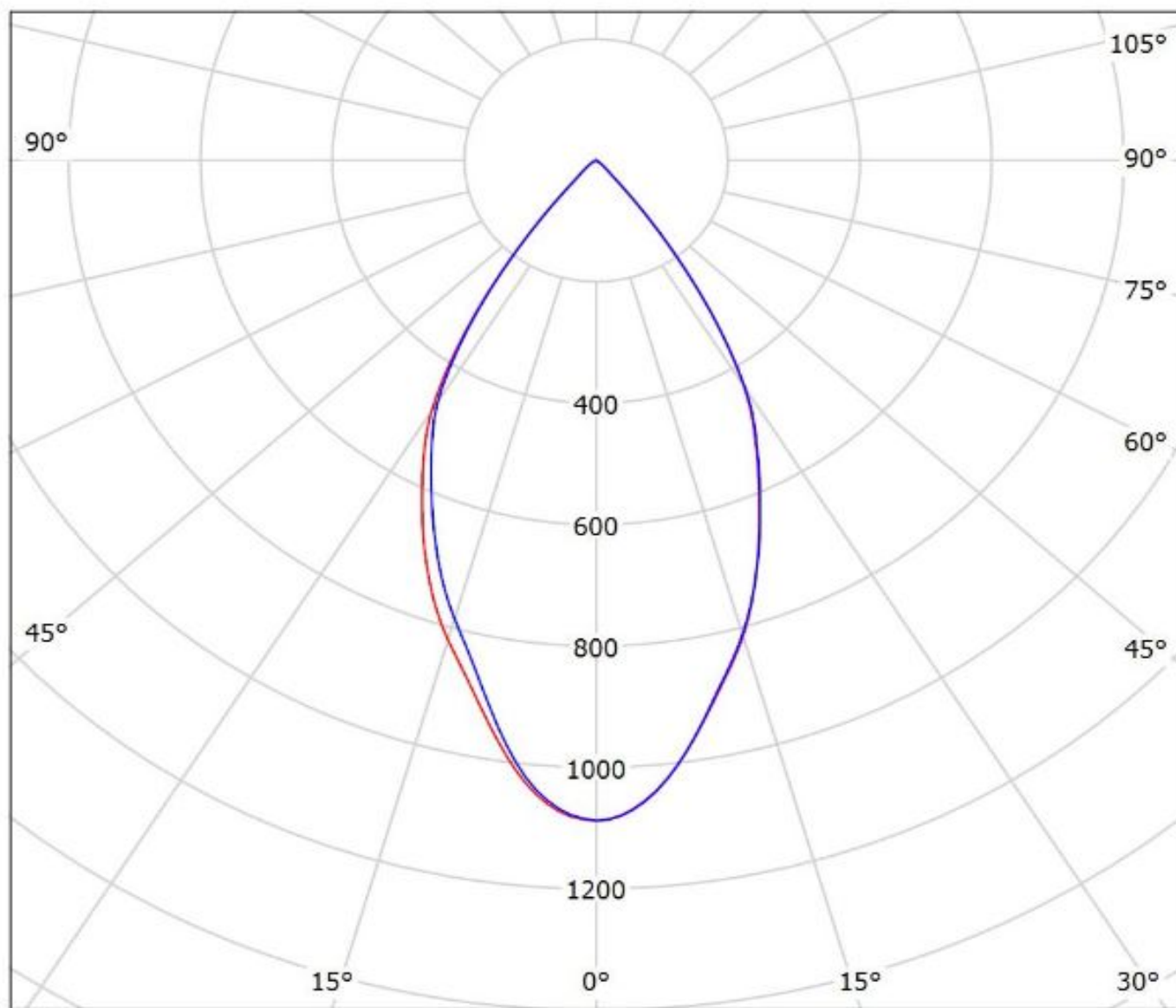


Luminaire: Ledil F16002_MIRELLA-G2-WW_(LC020C+_F15848)

Lamps: 1 x Samsung_LC020C+_F15848_HEKLA-SOCKET-G_897.413lm@250mA_P=8.45362W_I=0.250A



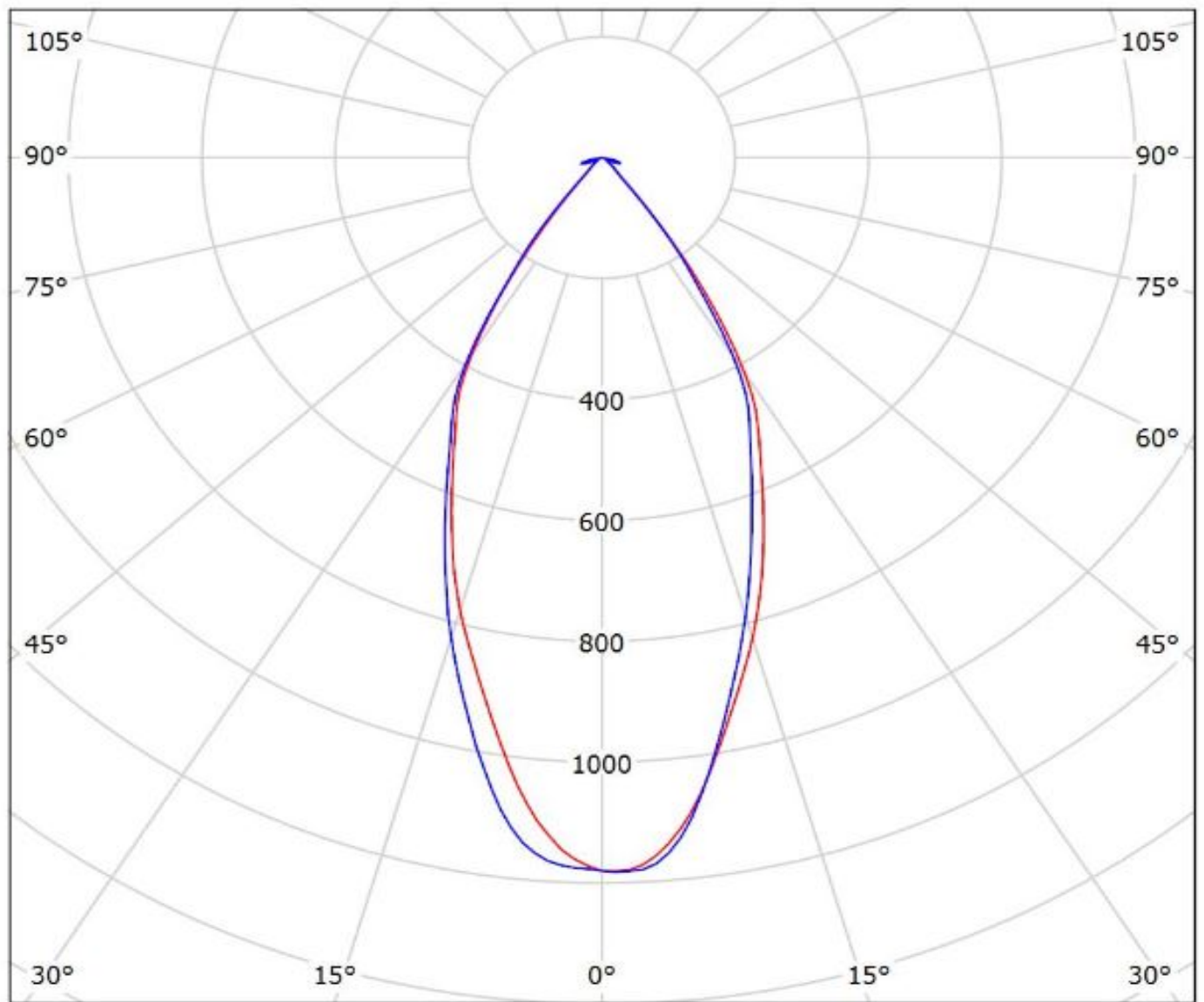
Luminaire: LEDiL Oy F16002_MIRELLA-G2-WW_(VERO10+F15616)
Lamps: 1 x Bridgelux_VERO10_(30-E1000B-Y2)_+F15616_HEKLA-SOCKET-F_815.324lm@250mA_CCT=3000K_P=6.48491W_I=0.25A



cd/klm
— C0 - C180 — C90 - C270

$\eta = 85\%$

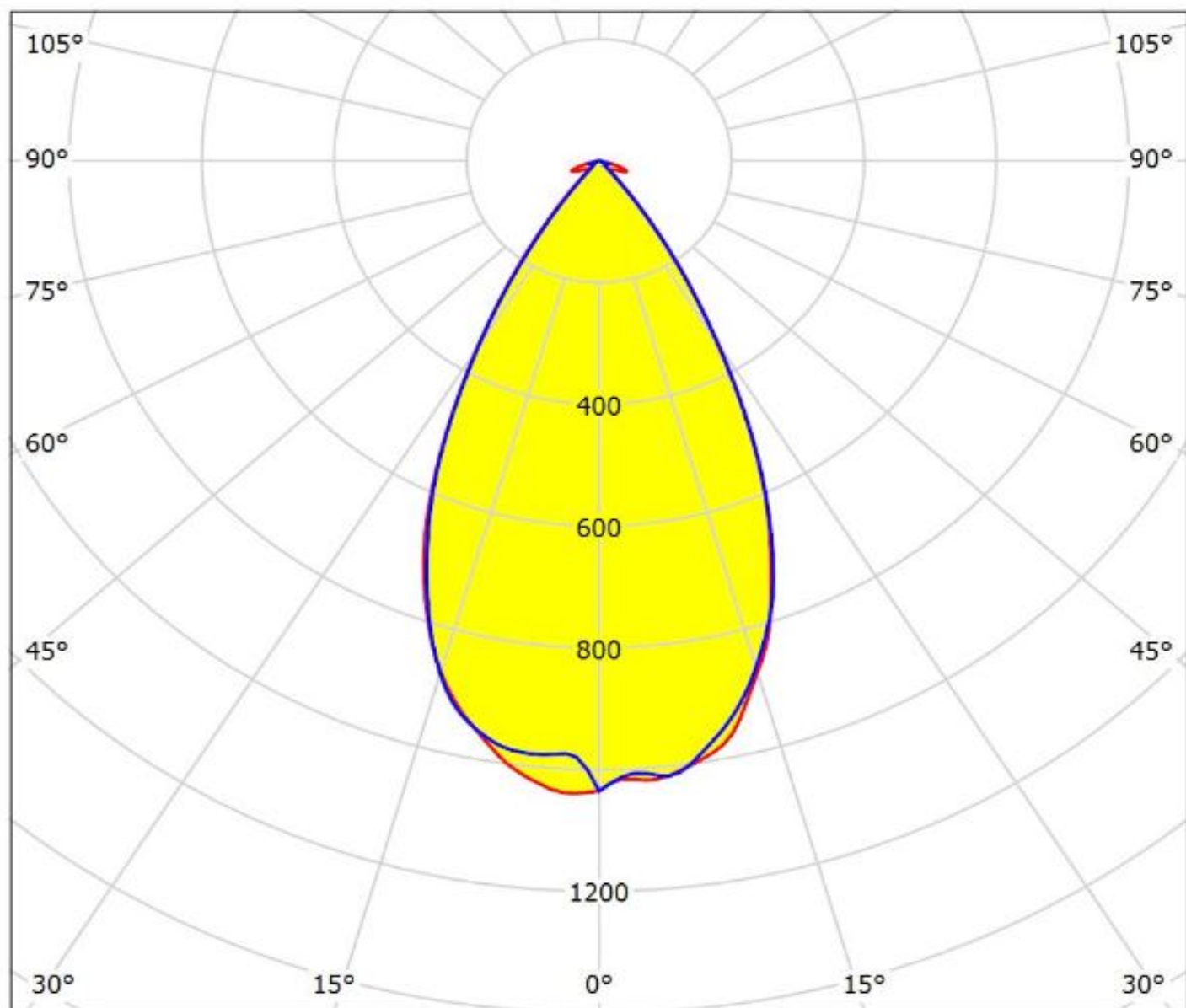
Luminaire: Ledil F16002_MIRELLA-G2-WW_(Vesta_DTW_9mm+F16142+BW)
Lamps: 1 x Bridgelux_Vesta_DTW_9mm_(12W)_(BXRV-DR-1830-H-1000-B-13)_+_F16142_Hekla-K+BW_490_TypL8_1018.44_lm@350mA_P=11.6974W_I=0.350A



cd/klm
— C0 - C180 — C90 - C270

$\eta = 79\%$

Luminaire: Ledil Oy F16002_MIRELLA-G2-WW_C16142_HEKLA-SOCKET-K_SIMULATED
Lamps: 1 x BRIDGELUX_VERO13

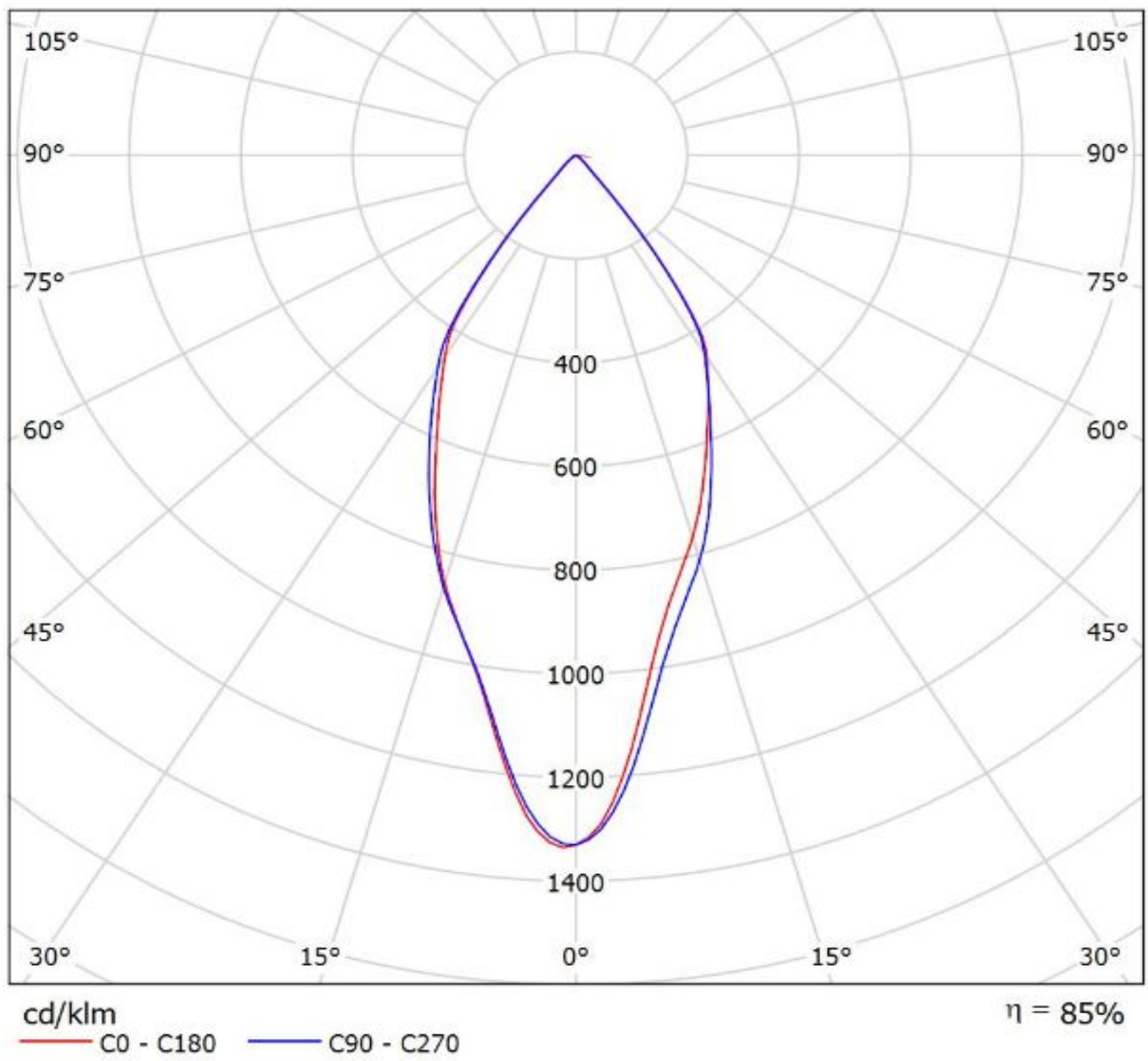


cd/klm

— C0 - C180 — C90 - C270

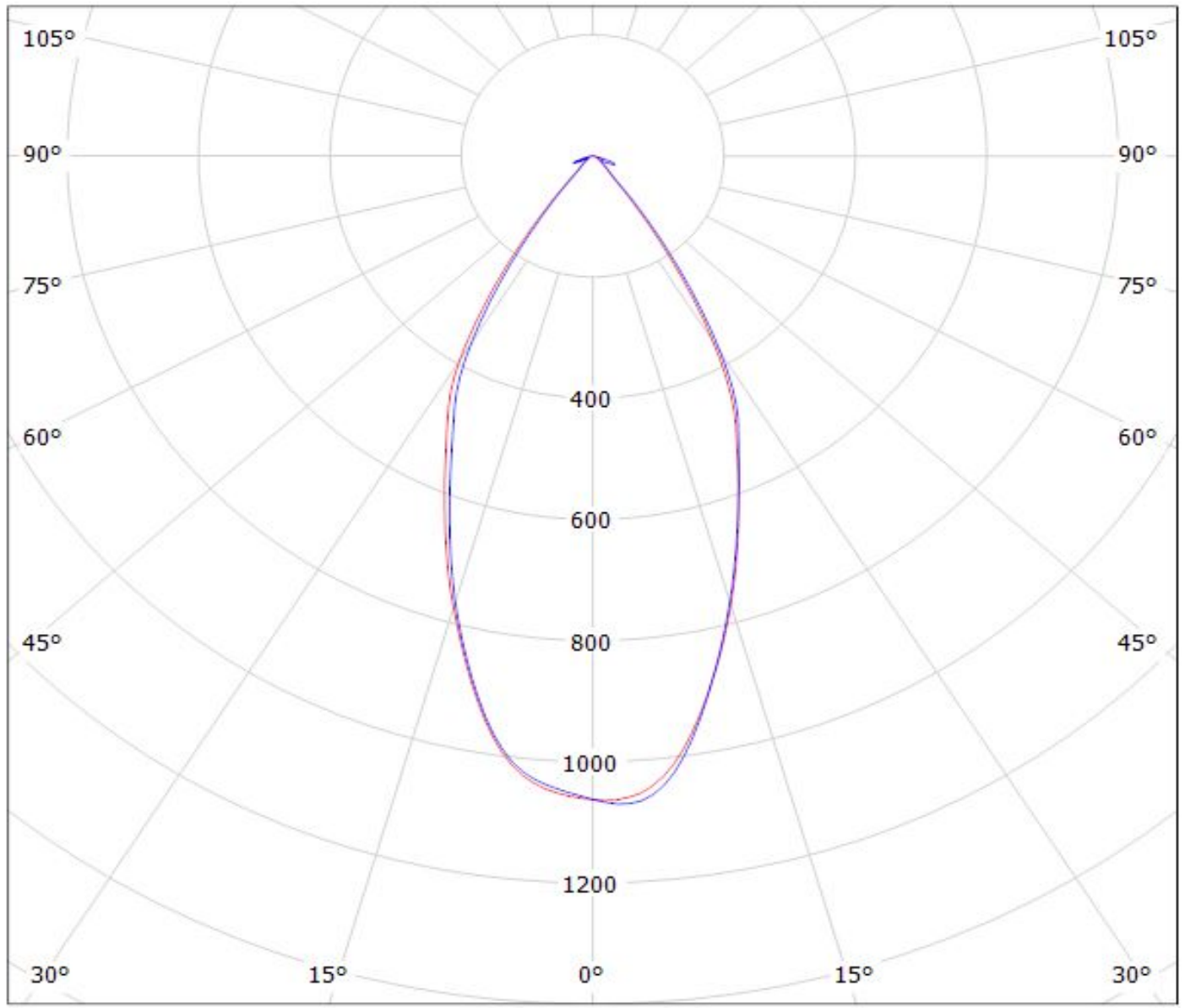
$\eta = 83\%$

Luminaire: Ledil F16002_MIRELLA-G2-WW_(CLU700+_F15255)
Lamps: 1 x Citizen_CLU700_(CLU700-1002B8-303H5G3)+_F15255_HEKLA-SOCKET-
C_705.572lm@250mA_P=7.5065W_I=0.250A



Luminaire: LEDiL Oy F16002_MIRELLA-G2-WW_(CLC020_057A5)

Lamps: 1 x Citizen_CLC020-057A5_913.53lm@360mA_P=12.9104W_I=0.25A



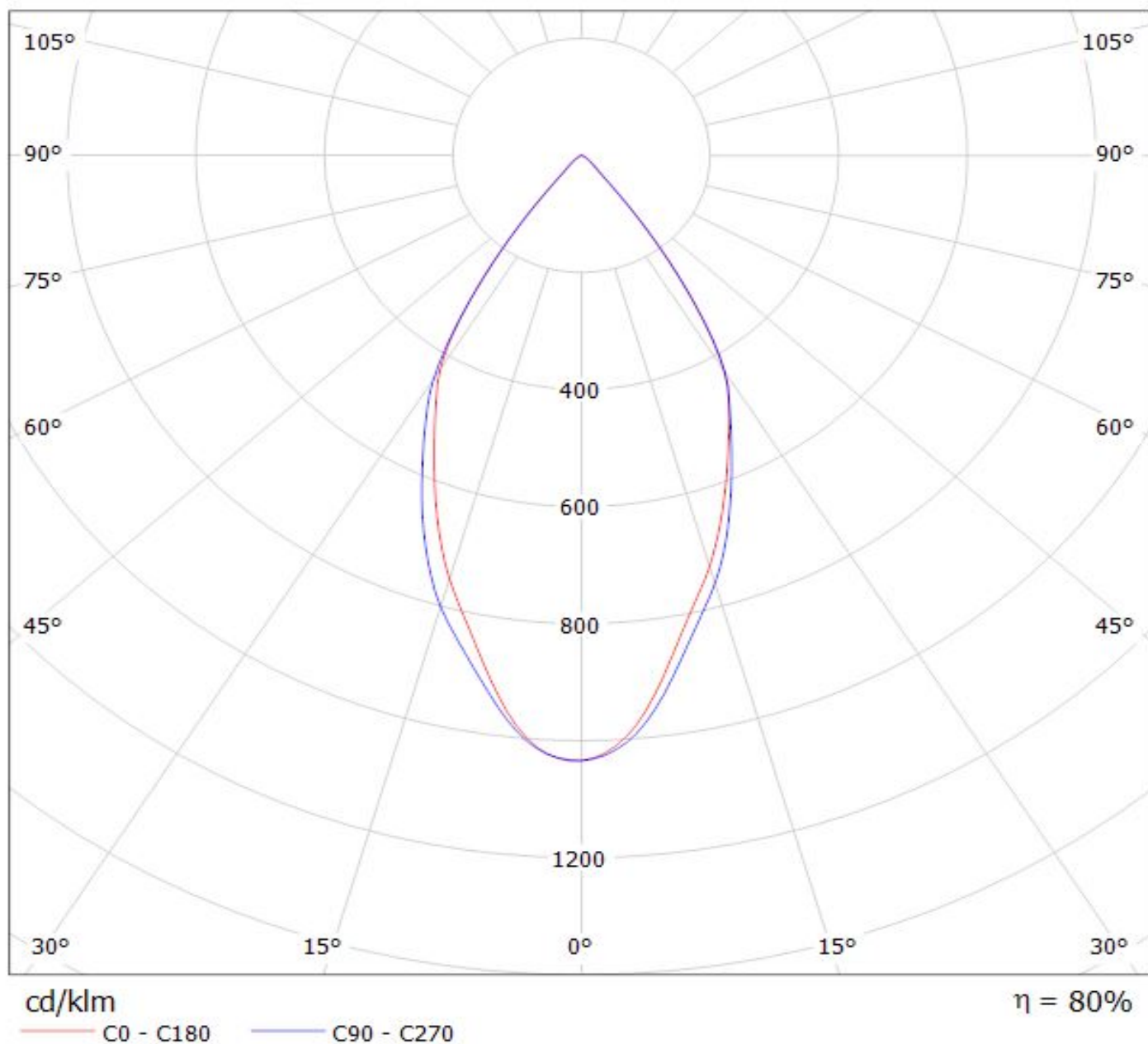
cd/klm

— C0 - C180

— C90 - C270

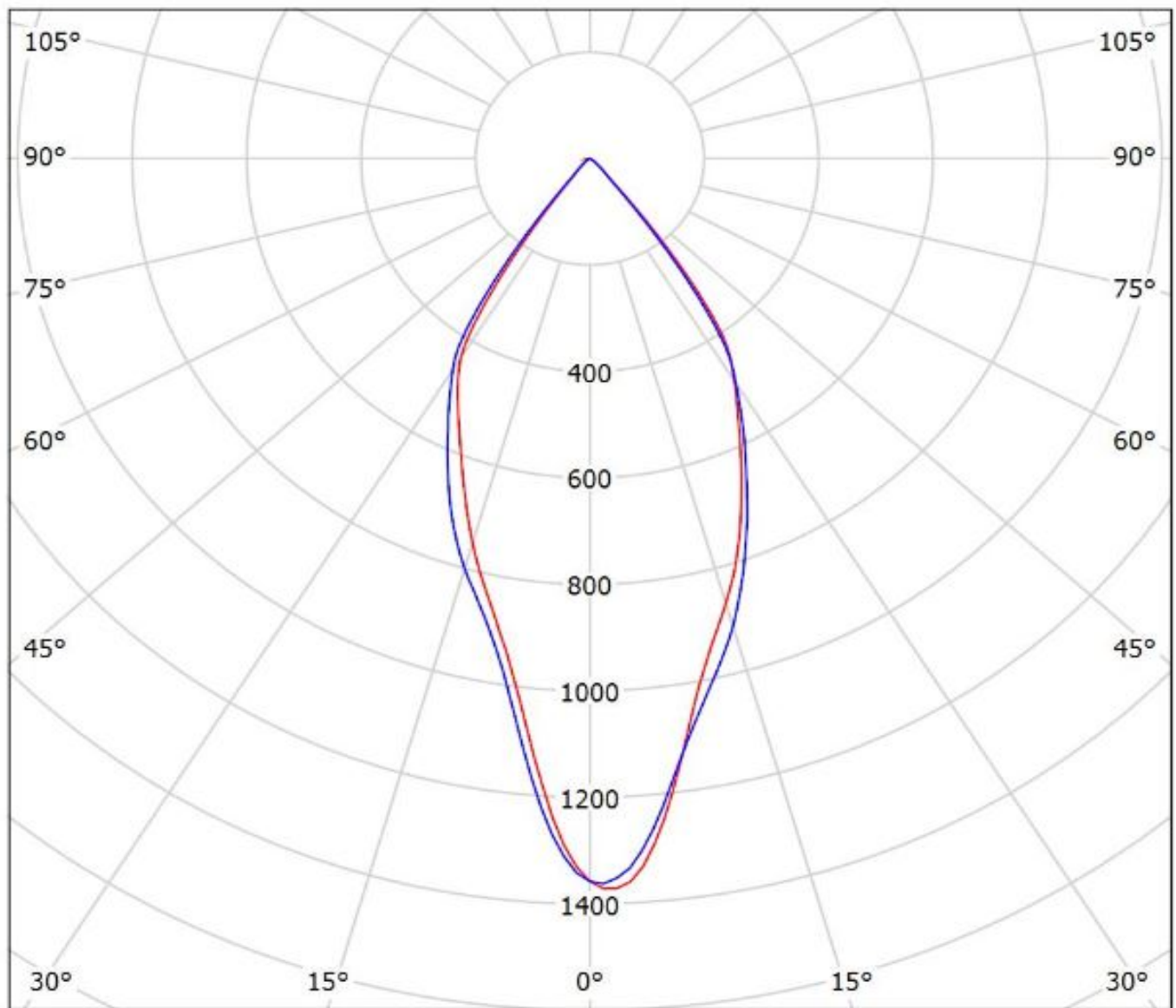
$\eta = 77\%$

Luminaire: LEDiL Oy F16002_MIRELLA-G2-WW_(CLU710)+F15859
Lamps: 1 x Citizen_CLU710_(1204B8-273M2G1)
+F15859_1101.12lm@250mA_CCT=2700K_P=8.52542W_U=34.112V



Luminaire: Ledil F16002_MIRELLA-G2-WW_(CXA1310+_F15956)

Lamps: 1 x Cree_CXA1310_(CXA1310-30H-G4-F0Y-00001)+_F15956_HEKLA-SOCKET-J_345.939lm@250mA_P=4.27579W_I=0.250A

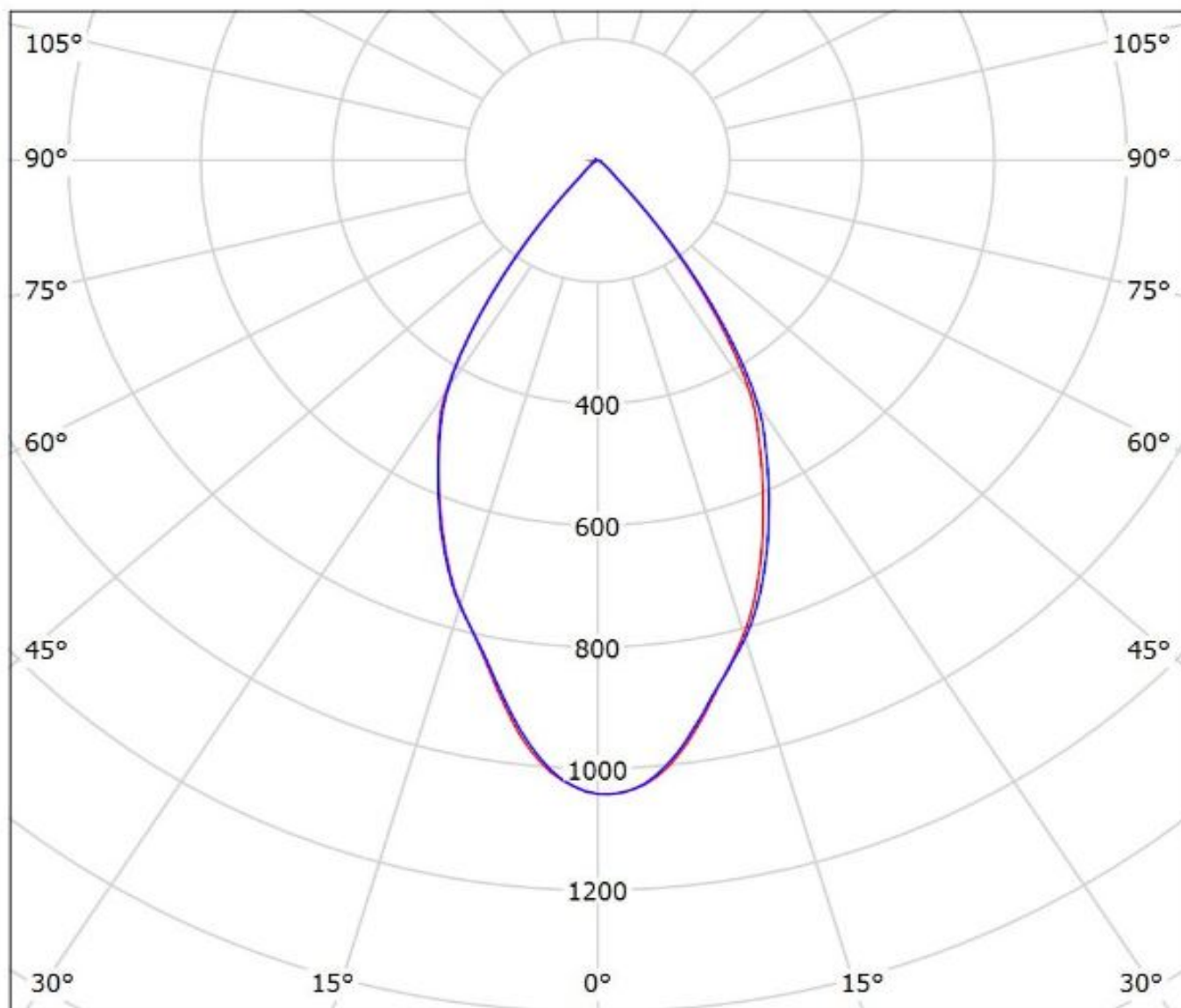


cd/klm

— C0 - C180 — C90 - C270

$\eta = 86\%$

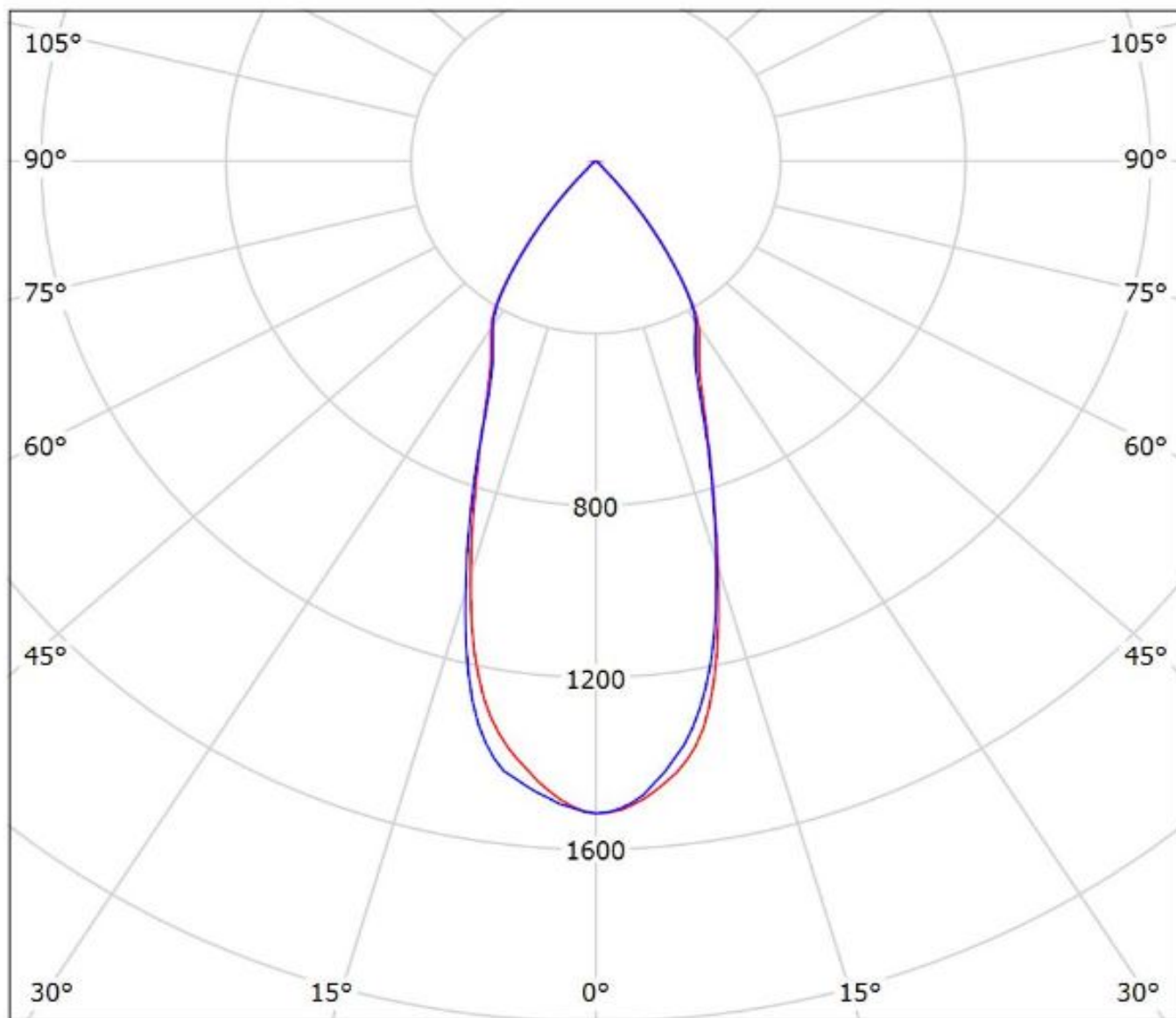
Luminaire: Ledil F15560_MIRELLA-G2-W_(CoB_1203+_F15858)
Lamps: 1 x Luxeon_CoB_1203_(LHC1-3080-1203)+_F15858_HEKLA-SOCKET-
H_993.26lm@250mA_P=8.71526W_I=0.250A



cd/klm
— C0 - C180 — C90 - C270

$\eta = 83\%$

Luminaire: Ledil F16002_MIRELLA-G2-WW_(Soleriq_S9+_F15255)
Lamps: 1 x Osram_Soleriq_S9_(GW_KAFHB3.EM)+_F15255_HEKLA-SOCKET-
C_1182.71lm@250mA_P=8.81997W_I=0.250A

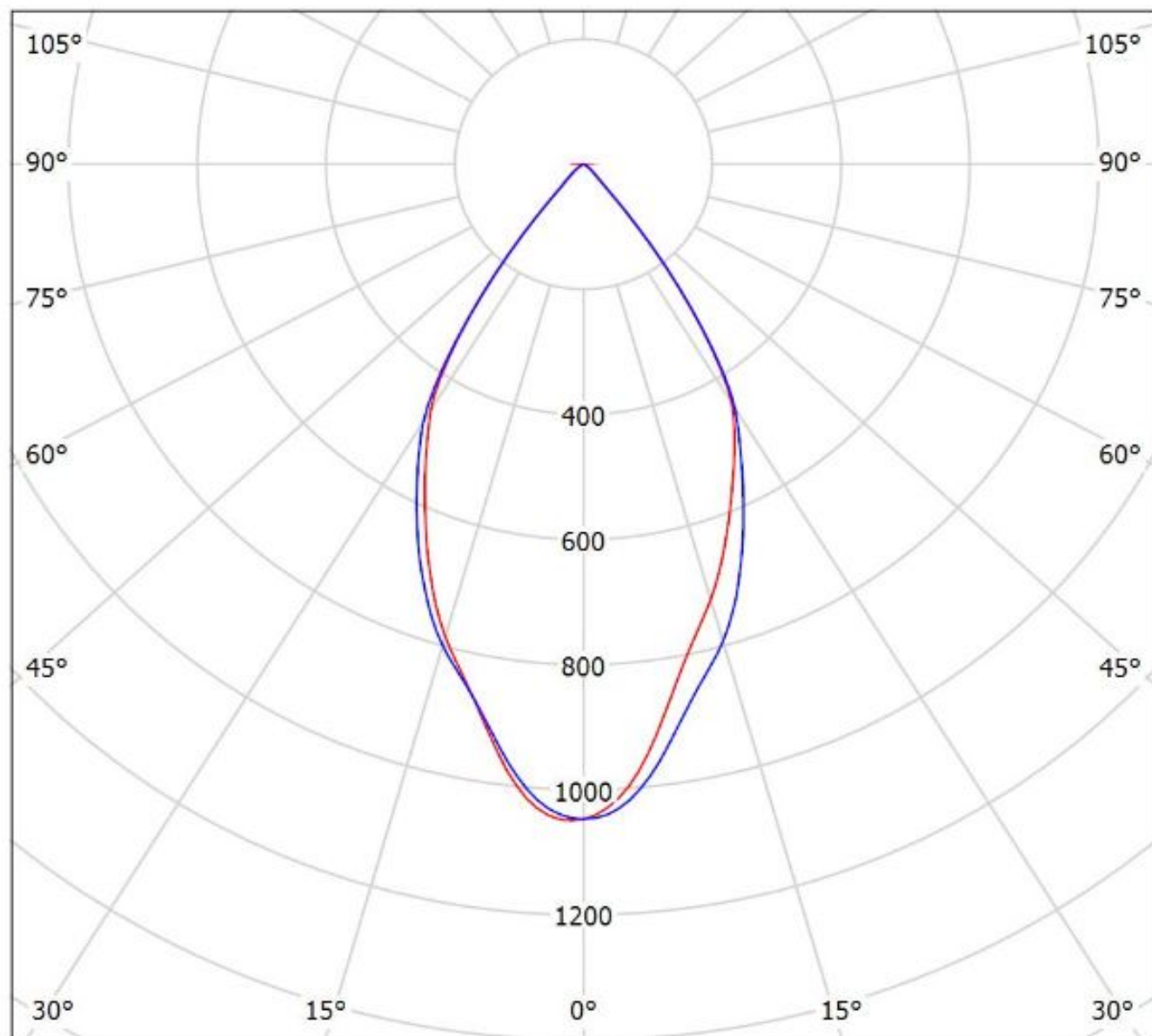


cd/klm
— C0 - C180 — C90 - C270

$\eta = 91\%$

Luminaire: Ledil F16002_MIRELLA-G2-WW_(LC020C+_F15848)

Lamps: 1 x Samsung_LC020C+_F15848_HEKLA-SOCKET-G_897.413lm@250mA_P=8.45362W_I=0.250A



cd/klm

— C0 - C180

— C90 - C270

$\eta = 83\%$

NOTE: The typical divergence will be changed by different color, chip size and chip position tolerance. The typical total divergence is the full angle measured where the luminous intensity is half of the peak value.

GENERAL INFORMATION

- Product series especially designed & optimized for series of LEDs.
- Special care taken to make light distribution as uniform as possible.

Note! Due to use of high power COB's with this product, special attention to proper thermal design is highly recommended. LEDiL has no liability for direct, indirect or consecutive damages arising from the LEDiL products being used outside of the recommended temperature range.