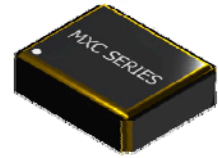


MXC Series 2.0 x 2.5 Ceramic SMD Oscillator



- o Low Profile SMD Package
- o Hermetically Sealed
- o Wide Frequency Range
- o Custom Options Available



Frequency Range	0.5MHZ to 110.000MHZ		
Frequency Stability	(See Part Number Guide for Options)		
Aging (+25°C ±3°C)	±3ppm max		
Supply Voltage ±10% (Vdd)	+1.80 VDC	+2.50 VDC	+3.30 VDC
Supply Current	15mA max		
Output Waveform	CMOS 15pF		
Output Low Logic "0"	10% Vdd max		
Output High Logic "1"	90% Vdd min		
Symmetry (50% of waveform)	(See Part Number Guide for Options)		
Start-up Time	5mSec max		
Rise and Fall Time	7nSec max		
Phase Jitter (12KHZ ~20MHZ)	1pSec max		
Period Jitter (Peak to Peak)	±50pSec max		
Tri-State Operation	Voh = 70% of Vdd min to Enable Output Vol = 30% max or grounded to Disable Output (High Impedance)		
Temperature Stability*	(See Part Number Guide for Options)		
Temperature Operating Range	(See Part Number Guide for Options)		
Temperature Storage Range	-55°C TO +125°C		
* Inclusive of Temperature., Load and Voltage			

Environmental & Mechanical Detail

Shock	MIL-STD-883, Method 2002 Cond B
Solderability	MIL-STD-883, Method 2003
Solvent Resistance	MIL-STD-202, Method 215
Vibration	MIL-STD-883, Method 2007, Cond A
Gross Leak Test	MIL-STD-883, Method 1014, Cond C
Fine Leak Test	MIL-STD-883, Method 1014, Cond A2
MSL	Level 1 per IPC/JEDEC J-STD 20

Marking Detail

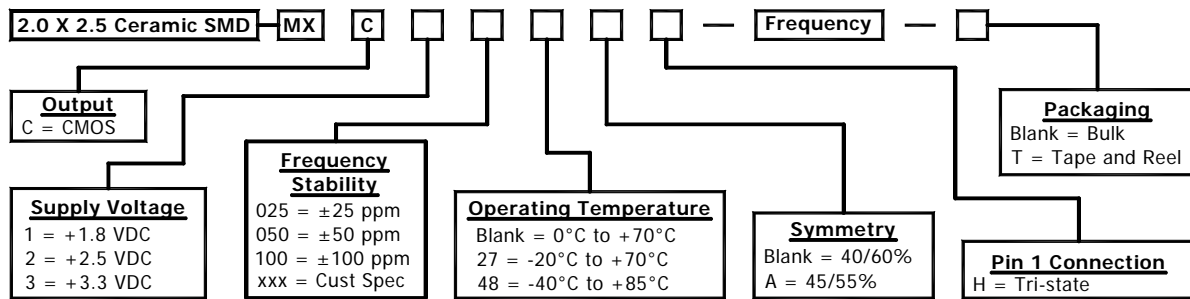
First Line = XX.XX (5 characters Max)	
XX.XX	= Device Frequency (four digits including decimal point)
Second Line = SYWW (5 characters Max)	
S	= Manufacturer Identifier (may be one or two letters)
YWW	= Date Code (Year/Week)
L	= RoHS Compliant
Pin 1 Indicator	



MMD Monitor/Quartztek
 30400 Esperanza, Rancho Santa Margarita, CA, 92688
 Phone: (949) 709-5075, Fax: (949) 709-3536, www.mmdcomp.com
 Sales@mmdcomp.com

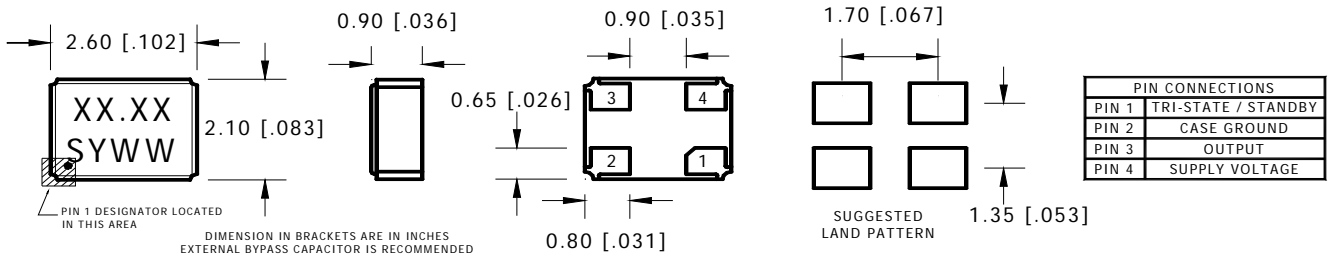


Part Number Guide

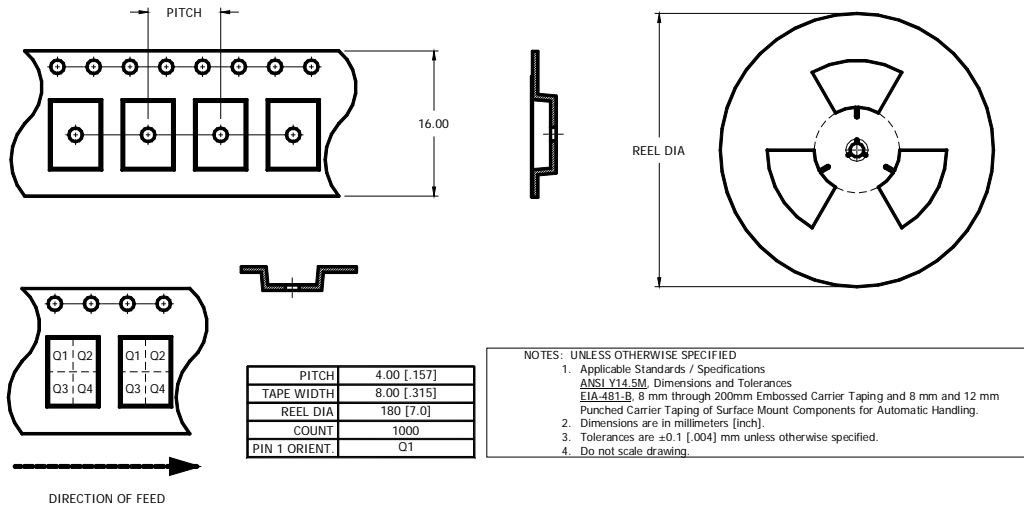


Please Consult with MMD Sales Department for any other Parameters or Options

Mechanical Details



Tape & Reel Dimensions



MMD Monitor/Quartztek
 30400 Esperanza, Rancho Santa Margarita, CA, 92688
 Phone: (949) 709-5075, Fax: (949) 709-3536, www.mmdcomp.com
 Sales@mmdcomp.com

