

Coaxial

Voltage Controlled Oscillator

ZX95-3760+

Linear Tuning 3200 to 3760 MHz

Features

- low phase noise
- low pushing
- low pulling
- protected by US patent 6,790,049

Applications

- r & d
- lab
- instrumentation
- wireless communications
- satellite systems
- SAP/SAB



CASE STYLE: GB956

Connectors Model

SMA ZX95-3760-S+

+RoHS Compliant

The +Suffix identifies RoHS Compliance. See our web site for RoHS Compliance methodologies and qualifications

Electrical Specifications

MODEL NO.	FREQ. (MHz)		POWER OUTPUT (dBm)	PHASE NOISE dBc/Hz SSB at offset frequencies, kHz				TUNING				NON HARMONIC SPURIOUS (dBc)	HARMONICS (dBc)		PULLING pk-pk @12 dB (MHz)	PUSHING (MHz/V)	DC OPERATING POWER		
	Min.	Max.		Typ.	1	10	100	1000	VOLTAGE RANGE (V)	SENSITIVITY (MHz/V)	PORT CAP (pF)		3 dB MODULATION BANDWIDTH (MHz)	Typ.			Max.	Vcc (volts)	Current (mA)
ZX95-3760+	3200	3760	+8	-69	-96	-118	-139	0.5	15	56-67	15	120	-90	-28	-18	2.5	0.8	5	48

Maximum Ratings

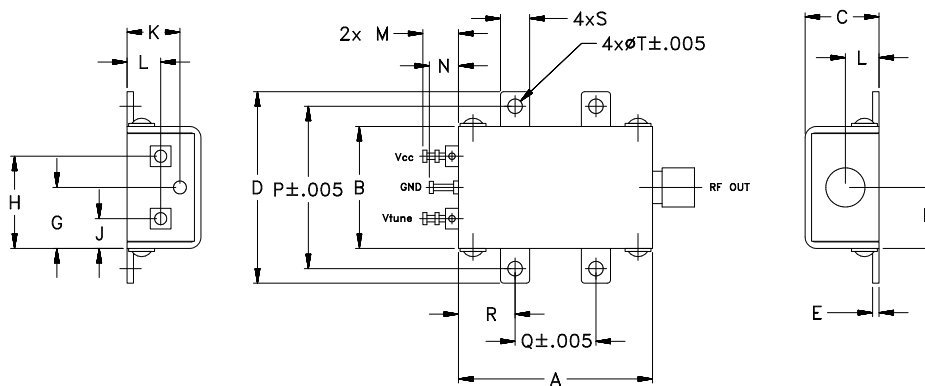
Operating Temperature -55°C to 85°C
 Storage Temperature -55°C to 100°C
 Absolute Max. Supply Voltage (Vcc) 6.5V
 Absolute Max. Tuning Voltage (Vtune) 17.0V
 All specifications 50 ohm system

Permanent damage may occur if any of these limits are exceeded.



NOTE: When soldering the DC connections, caution must be used to avoid overheating the DC terminals. See Application Note [AN-40-10](#).

Outline Drawing



Outline Dimensions (inch/mm)

A	B	C	D	E	F	G	H	J	K	L	M	N	P	Q	R	S	T	wt.
1.20	.75	.46	1.18	.04	.38	.38	.57	.18	.33	.21	.22	.18	1.00	.50	.35	.18	.106	grams
30.48	19.05	11.68	29.97	1.02	9.65	9.65	14.48	4.57	8.38	5.33	5.59	4.57	25.40	12.70	8.89	4.57	2.69	35.0

Performance Data & Curves*

ZX95-3760+

V TUNE	TUNE SENS (MHz/V)	FREQUENCY (MHz)			POWER OUTPUT (dBm)			Icc (mA)	HARMONICS (dBc)			FREQ. PUSH (MHz/V)	FREQ. PULL (MHz)	PHASE NOISE (dBc/Hz) at offsets				FREQ OFFSET (KHz)	PHASE NOISE at 3480 MHz (dBc/Hz)
		-55°C	+25°C	+85°C	-55°C	+25°C	+85°C		F2	F3	F4			1kHz	10kHz	100kHz	1MHz		
0.00	105.96	2991.3	2969.9	2951.3	8.57	8.54	8.21	40.67	-28.5	-43.4	-65.6	1.03	1.38	-66.3	-94.9	-116.4	-136.3	1.0	-70.12
0.50	90.78	3043.5	3022.9	3007.4	8.46	8.46	8.16	40.64	-28.4	-42.5	-67.9	0.03	3.21	-68.2	-95.2	-116.9	-137.1	2.0	-78.45
1.00	75.60	3085.4	3068.3	3053.6	8.48	8.44	8.06	40.66	-29.3	-44.7	-63.0	0.29	3.31	-68.9	-96.2	-117.8	-137.7	3.5	-85.57
1.50	73.20	3122.4	3106.1	3091.8	8.35	8.33	8.00	40.66	-30.8	-42.8	-59.2	0.38	1.86	-70.3	-96.8	-117.8	-138.1	6.0	-91.33
2.00	66.64	3159.2	3142.7	3127.5	8.26	8.19	7.85	40.60	-28.8	-42.0	-58.6	0.52	4.30	-69.0	-95.3	-117.3	-137.4	8.5	-94.97
2.50	63.82	3192.5	3176.0	3161.9	8.23	8.15	7.76	40.63	-30.0	-41.1	-52.6	0.56	2.10	-71.3	-96.1	-117.5	-138.1	10.0	-96.42
3.00	63.14	3224.7	3207.9	3193.8	8.22	8.10	7.67	40.63	-28.9	-40.5	-54.1	0.66	3.49	-71.2	-96.4	-118.0	-138.3	20.8	-104.07
4.00	59.93	3284.8	3269.0	3255.4	8.04	8.02	7.65	40.68	-28.2	-42.6	-55.2	0.76	3.03	-71.0	-97.0	-118.2	-138.5	35.5	-109.25
5.00	56.60	3343.9	3328.4	3314.3	8.03	7.86	7.40	40.73	-27.8	-41.2	-59.1	0.87	2.34	-69.9	-96.0	-118.3	-138.4	60.7	-114.12
6.00	59.22	3401.5	3385.1	3370.9	7.68	7.66	7.40	40.72	-29.1	-38.5	-57.1	1.02	3.32	-69.7	-96.0	-117.7	-137.6	86.7	-117.31
7.00	56.29	3458.4	3443.3	3429.3	7.79	7.65	7.16	40.87	-29.5	-39.3	-63.8	0.95	3.59	-69.8	-96.9	-118.7	-138.8	100.0	-118.50
8.00	59.41	3517.3	3501.4	3486.6	7.45	7.34	7.07	40.89	-30.8	-36.4	-58.7	1.08	3.65	-68.8	-96.0	-118.4	-138.6	148.1	-122.11
9.00	60.89	3576.4	3560.5	3546.2	7.53	7.54	7.12	41.01	-31.4	-39.8	-59.2	1.07	3.37	-70.0	-96.6	-118.5	-139.3	177.0	-123.62
10.00	63.67	3638.4	3622.1	3607.1	7.43	7.26	6.98	41.09	-31.0	-46.1	-60.6	0.94	2.68	-69.8	-95.6	-117.9	-138.4	211.6	-125.26
11.00	66.77	3703.2	3686.3	3670.7	7.21	7.33	7.08	41.18	-31.0	-51.0	-63.7	0.66	2.97	-67.7	-95.6	-118.1	-138.3	302.4	-128.32
12.00	67.01	3770.0	3753.3	3737.5	7.42	7.22	6.76	41.32	-31.0	-51.2	-60.2	0.05	3.19	-68.8	-95.7	-117.7	-138.2	361.5	-129.78
13.00	65.50	3837.9	3821.0	3804.6	6.98	6.89	6.78	41.43	-31.7	-51.2	-51.9	1.47	2.92	-69.5	-94.7	-116.9	-137.6	507.5	-132.95
14.00	63.12	3903.5	3885.8	3869.6	6.95	7.20	6.85	41.50	-32.3	-50.1	-44.0	4.05	2.74	-69.0	-93.8	-116.3	-137.0	606.7	-134.49
14.50	57.80	3934.2	3917.4	3901.1	6.88	6.89	6.80	41.58	-30.8	-47.1	-41.7	5.26	2.42	-67.5	-93.4	-116.5	-136.8	851.6	-137.47
15.00	54.21	3963.1	3946.3	3930.5	7.12	6.91	6.59	41.62	-29.8	-42.0	-50.2	6.49	3.38	-69.7	-93.2	-116.7	-136.8	1000.0	-138.58

*at 25°C unless mentioned otherwise

