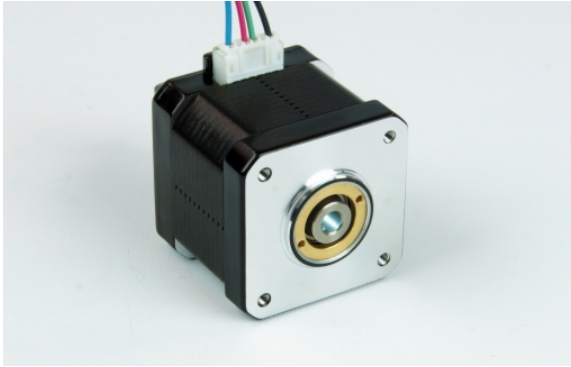


HH17-101

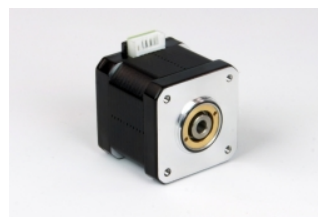
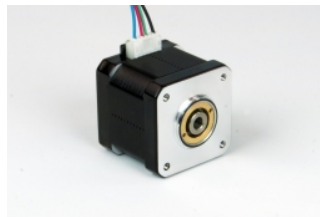
Hollow Shaft, NEMA 17 High Torque Step Motor

1pc. - 50.00
50pc. - 37.50



Product Features

- Hollow shaft for mounting custom shafts or lead screws
- High torque design
- NEMA 17 frame size
- 2-phase hybrid step motor
- 1.8 degree step angle
- Shipped with detachable lead/connector pigtail



Description

Product Description:

The HH17-101 two-phase stepper motor features a hollow shaft with a 5 mm bore. The hollow shaft allows for the attachment of lead screws and customized shafts without disassembling the motor.

This step motor is suitable for a wide range of motion control applications and is recommended for use with our popular [ST5 stepper drives](#).

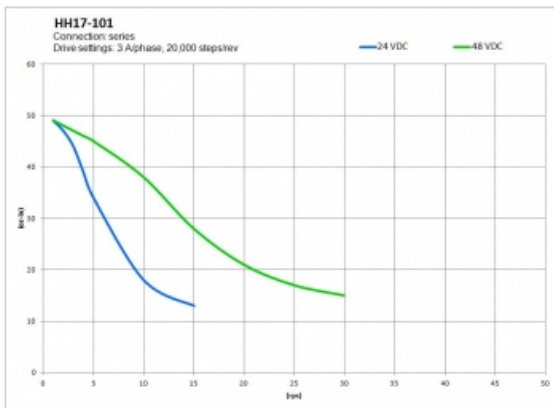
Specifications

Part Number:	HH17-101
Frame Size:	NEMA 17
Motor Type:	High torque
Motor Length:	1.57 inches
Number of Lead Wires:	4
Lead Wire Configuration:	flying leads, no connector
Lead Wire/Cable Length:	11.8 inches
Lead Wire Gauge:	26 AWG
Bipolar Holding Torque:	63.7 oz-in
Step Angle:	1.8 deg
Bipolar Series Current:	2 A/phase
Bipolar Series Resistance:	1.04 Ohms/phase
Bipolar Series Inductance:	2.73 mH/phase
Rotor Inertia:	8.07E-04 oz-in-sec ²
Weight:	0.62 lbs
Storage Temperature:	-30 to 70 °C
Operating Temperature:	-20 to 50 °C
Insulation Class:	B
End Play:	0.004 inch max w/ 22.5 lb load

Downloads

Datasheet:	http://s3.amazonaws.com/applied-motion-pdf/HH17-101.pdf
2D Drawing:	HH17-101_RevA.pdf 3004-320_RevA.pdf
3D Drawing:	HH17-101.igs
Speed-Torque Curves:	HH17-101 Torque Curve.pdf

Torque Curves



Pricing

HH17-101 Part No. w/ Single Shaft	
1pc.	\$50.00
25pc.	\$43.00
50pc.	\$37.50
100pc.	Request a Quote for 100+ piece pricing.