



Micro Commercial Components™

## *Micro Commercial Components Corp.*

### Products End of Life Notification

Issue date: Oct-7<sup>th</sup>-2008

Last Buy Date :Dec-31<sup>th</sup>-2008

Description and Purpose:

MCC has undergone a review of its core business and products , and

determined to discontinue below products:

Discontinued Devices	Possible Replacements
MR750	6A05 or 60S05
MR751	6A1 or 60S1
MR752	6A2 or 60S2
MR754	6A4 or 60S4
MR756	6A6 or 60S6
MR758	6A8 or 60S8
MR7510	6A10 or 60S10



Micro Commercial Components

Micro Commercial Components  
20736 Marilla Street Chatsworth  
CA 91311  
Phone: (818) 701-4933  
Fax: (818) 701-4939

**MR750  
thru  
MR7510**

**6 Amp Rectifier  
50 - 1000 Volts**

**Features**

- Low Cost
- Low Forward Voltage Drop
- High Current Capability
- High Surge Current Capability
- Low Leakage

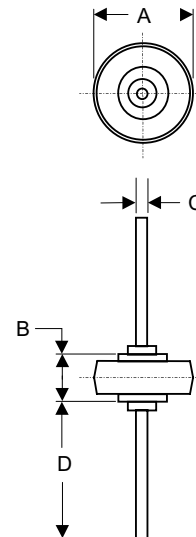
**Maximum Ratings**

- Operating Temperature: -65°C to +175°C
- Storage Temperature: -65°C to +175°C
- Maximum Thermal Resistance; 10°C/W Junction To Ambient

MCC Catalog Number	Device Marking Note 1	Maximum Reccurent Peak Reverse Voltage	Maximum RMS Voltage	Maximum DC Blocking Voltage
MR750	Green	50V	35V	50V
MR751	Red	100V	70V	100V
MR752	White	200V	140V	200V
MR754	Orange	400V	280V	400V
MR756	Brown	600V	420V	600V
MR758	Silver	800V	560V	800V
MR7510	Blue	1000V	700V	1000V

Note 1 : Different colors of cathode band on body denote the voltage rate.

**LEADED BUTTON**



**Electrical Characteristics @ 25°C Unless Otherwise Specified**

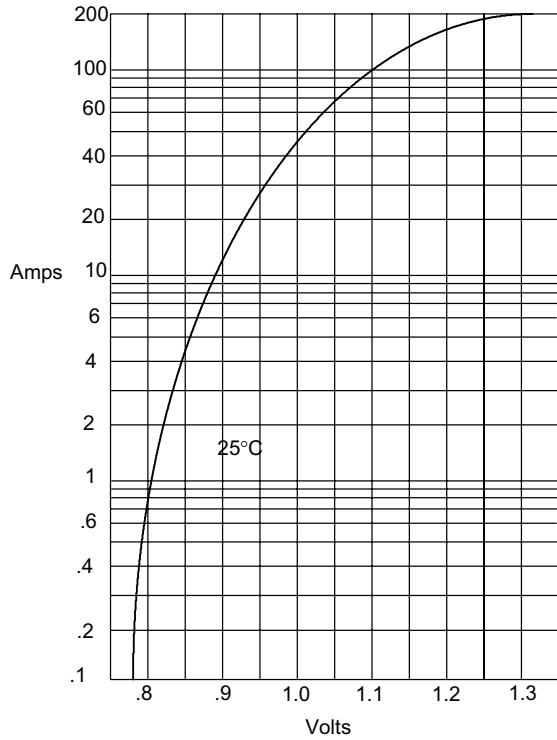
Average Forward Current	$I_{F(AV)}$	6.0A	$T_A = 60^\circ\text{C}$
Peak Forward Surge Current	$I_{FSM}$	400A	8.3ms, half sine
Maximum Instantaneous Forward Voltage	$V_F$	0.9V 1.25V	$I_{FM} = 6.0A;$ $T_J = 25^\circ\text{C}^*$ $I_{FM} = 100A;$ $T_J = 25^\circ\text{C}$
Maximum DC Reverse Current At Rated DC Blocking Voltage	$I_R$	25µA 1.0mA	$T_J = 25^\circ\text{C}$ $T_J = 100^\circ\text{C}$

\*Pulse test: Pulse width 300 µsec, Duty cycle 1%

DIM	DIMENSIONS				NOTE
	INCHES		MM		
	MIN	MAX	MIN	MAX	
A	.332	.342	8.43	8.69	
B	.234	.246	5.94	6.25	
C	.050	.053	1.27	1.35	
D	.990	1.010	25.15	25.65	2PL

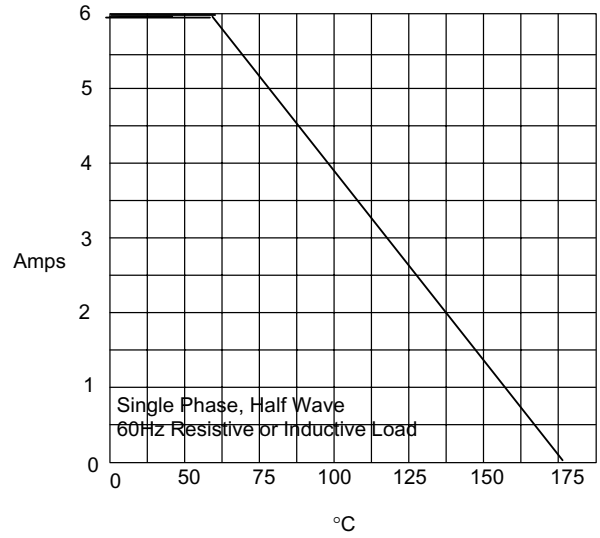
# MR750 thru MR7510

Figure 1  
Typical Forward Characteristics



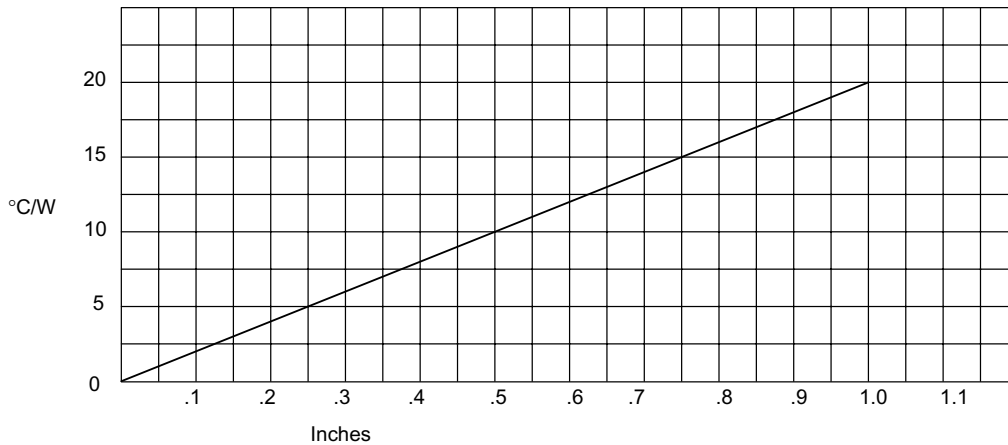
Instantaneous Forward Current - Amperes *versus*  
Instantaneous Forward Voltage - Volts

Figure 2  
Forward Derating Curve



Average Forward Rectified Current - Amperes *versus*  
Ambient Temperature - °C

Figure 3  
Typical Thermal Resistance versus Lead Length



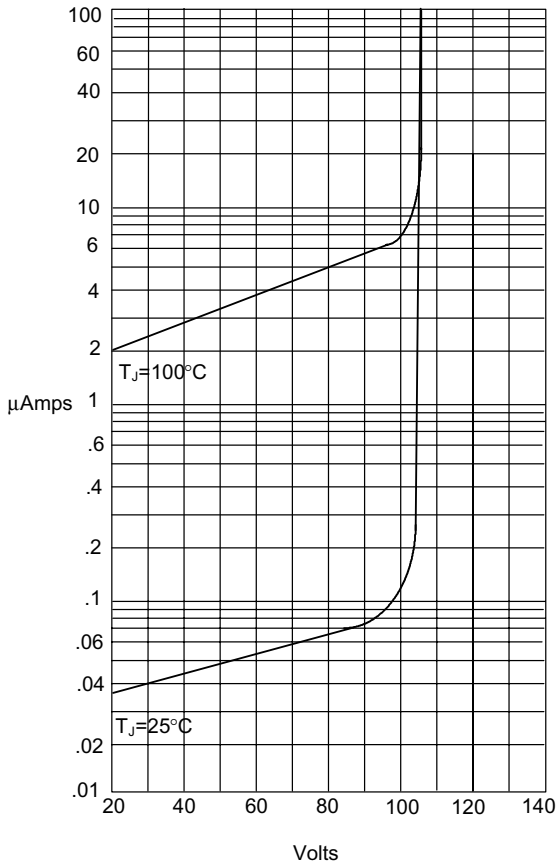
Thermal Resistance - °C/W *versus*  
Equal Lead Length To Heat Sink - Inches

MR750 thru MR7510



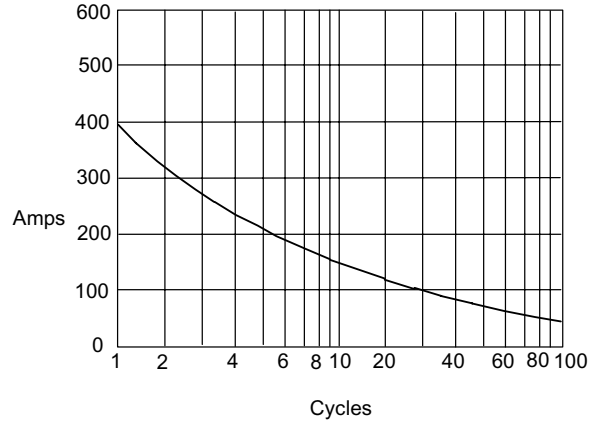
Micro Commercial Components

Figure 4  
Typical Reverse Characteristics



Instantaneous Reverse Leakage Current - MicroAmperes versus  
Percent Of Rated Peak Reverse Voltage - Volts

Figure 5  
Maximum Non-Repetitive Forward Surge Current



Peak Forward Surge Current - Amperes versus  
Number Of Cycles At 60Hz - Cycles



Micro Commercial Components

**\*\*\*IMPORTANT NOTICE\*\*\***

*Micro Commercial Components Corp.* reserves the right to make changes without further notice to any product herein to make corrections, modifications, enhancements, improvements, or other changes. *Micro Commercial Components Corp.* does not assume any liability arising out of the application or use of any product described herein; neither does it convey any license under its patent rights, nor the rights of others. The user of products in such applications shall assume all risks of such use and will agree to hold *Micro Commercial Components Corp.* and all the companies whose products are represented on our website, harmless against all damages.

**\*\*\* APPLICATIONS DISCLAIMER \*\*\***

Products offer by *Micro Commercial Components Corp.* are not intended for use in Medical, Aerospace or Military Applications.