



## Features

- UL F class rated standard
- Small size and light weight
- PC board mounting
- UL/CUL certified

## Contact Data\*

Contact Arrangement	1A = SPST N.O. 1B = SPST N.C. 1C = SPDT
Contact Rating 10A contact	6A @ 28VDC & 300VAC resistive 10A @ 28VDC & 125VAC gen purpose
12A contact	12A @ 28VDC & 125VAC gen purpose 1/3hp - 120/240VAC

Contact Resistance	< 50 milliohms initial
Contact Material	AgSnO <sub>2</sub>
Maximum Switching Power	336W
Maximum Switching Voltage	380VAC, 110VDC
Maximum Switching Current	20A

## Coil Data\*

Coil Voltage VDC		Coil Resistance Ω +/- 10%				Pick Up Voltage VDC (max) 75% of rated voltage	Release Voltage VDC (min) 10% of rated voltage	Coil Power W	Operate Time ms	Release Time ms
Rated	Max	.36W	.45W	.50W	.80W					
5	6.5	70	56	50	31	3.75	.5	.36 .45 .50 .80	7	4
9	11.7	225	180	162	101	6.75	.9			
12	15.6	400	320	288	180	9.00	1.2			
24	31.2	1600	1280	1152	720	18.00	2.4			
48	62.4	6400	5120	4608	2880	36.00	4.8			

## General Data\*

Electrical Life @ rated load	100K cycles, average
Mechanical Life	10M cycles, average
Insulation Resistance	100M Ω min. @ 500VDC initial
Dielectric Strength, Coil to Contact Contact to Contact	2500V rms min. @ sea level initial 1000V rms min. @ sea level initial
Shock Resistance	100m/s <sup>2</sup> for 11 ms
Vibration Resistance	1.50mm double amplitude 10~40Hz
Terminal (Copper Alloy) Strength	10N
Operating Temperature	-55°C to +125°C
Storage Temperature	-55°C to +155°C
Solderability	260°C for 5 s
Weight	11g

\* Values can change due to the switching frequency, desired reliability levels, environmental conditions and in-rush load levels. It is recommended to test actual load conditions for the application. It is the user's responsibility to determine the performance suitability for their specific application. The use of any coil voltage less than the rated coil voltage may compromise the operation of the relay.

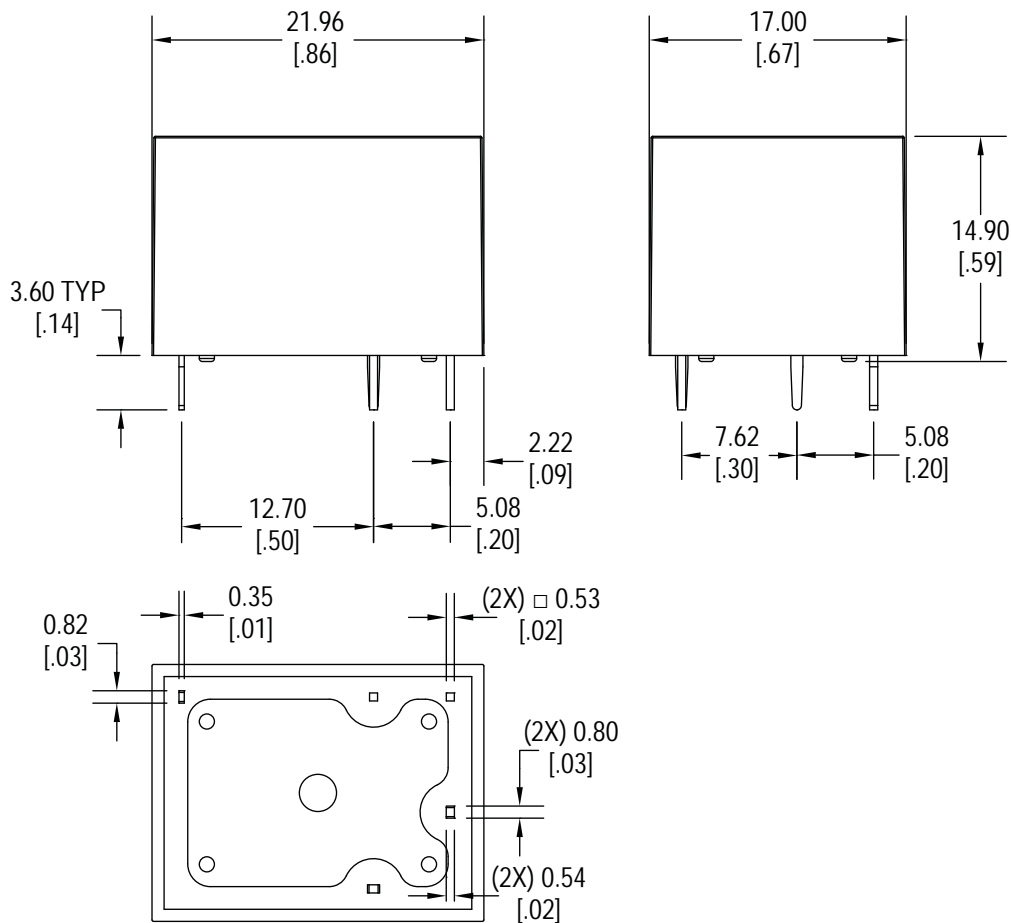
# J109F

## Ordering Information

1. Series	J109F	1C	S	10	24VDC	.45
J109F						
2. Contact Arrangement						
1A = SPST N.O.						
1B = SPST N.C.						
1C = SPDT						
3. Sealing Option						
S = Sealed						
4. Contact Rating						
10 = 10A						
12 = 12A						
5. Coil Voltage						
5VDC						
9VDC						
12VDC						
24VDC						
48VDC						
6. Coil Power						
.36 = .36W						
.45 = .45W						
.50 = .50W						
.80 = .80W						

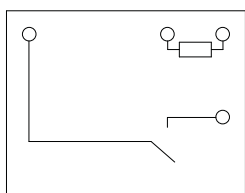
## Dimensions

Units = mm

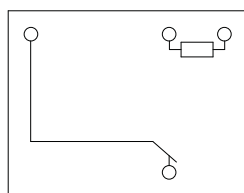


## Schematics & PC Layouts

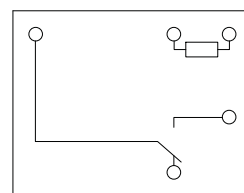
Bottom Views



1A



1B



1C

