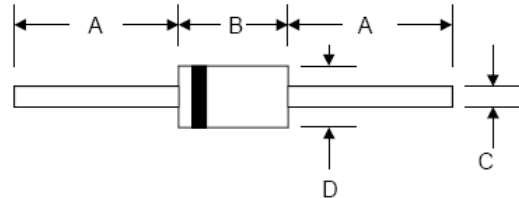




## GLASS PASSIVATED JUNCTION LOW CAPACITANCE TRANSIENT VOLTAGE SUPPRESSOR

### Features

- Glass Passivated Die Construction
- 500W Peak Pulse Power Dissipation
- Uni-directional Versions Available
- Excellent Clamping Capability
- Fast Response Time < 1 ns



DO-15

### Applications

- Communication Systems
- Power Supplies
- Medical Equipment
- Business Machines

REF.	DIMENSIONS			
	Millimeters		Inches	
	Min.	Max.	Min.	Max.
A	25.4	31	1.000	1.220
b	5.84	7.62	0.230	0.300
c	0.71	0.86	0.028	0.034
D	2.64	3.56	0.104	0.140

### Absolute Maximum Ratings

Parameter	Symbol	Value	Units
Peak Power Dissipation (Note 1. Figure1) @ $T_L = 25^\circ\text{C}$ , Pulse Width = 1 ms	$P_{PK}$	500	W
Steady State Power Dissipation @ $T_L = 75^\circ\text{C}$	$P_D$	1.0	W
Peak Forward Surge Current on 10/1000us Waveform (Note 1, Fig3)	$I_{pp}$	See Table.	A
Storage Temperature Range	$T_{STG}$	-55 to 150	$^\circ\text{C}$
Operating Junction Temperature Range	$T_J$	-55 to 150	$^\circ\text{C}$

1. 10 X 1000 us, non-repetitive

# SAC SERIES

## Specification

Type Number	Reverse Stand-Off Voltage	Maximum Reverse Leakage @VRMW	Breakdown Voltage Min. @IT	Test Current	Maximum Clamping Voltage @ IPP=5.0A	Peak Pulse Current	Working Inverse Blocking Voltage	Inverse Blocking Leakage @ VWIB	Peak Inverse Blocking Voltage	Maximum Junction Capacitance @ 0 Volts
	V <sub>RMW</sub> (V)	I <sub>R</sub> ( $\mu$ A)	V <sub>BR MIN</sub> (V)	I <sub>T</sub> (mA)	V <sub>C</sub> (V)	I <sub>PP</sub> (A)	V <sub>WIB</sub> (V)	I <sub>IB</sub> (mA)	V <sub>PIR</sub> (V)	C <sub>j</sub> (pF)
SAC5.0	5.0	300	7.60	1.0	10.0	44.0	75	1.0	100	50
SAC6.0	6.0	300	7.90	1.0	11.2	41.0	75	1.0	100	50
SAC7.0	7.0	300	8.33	1.0	12.6	38.0	75	1.0	100	50
SAC8.0	8.0	100	8.89	1.0	13.4	36.0	75	1.0	100	50
SAC8.5	8.5	50	9.44	1.0	14.0	34.0	75	1.0	100	50
SAC10	10.0	5	11.10	1.0	16.3	29.0	75	1.0	100	50
SAC12	12.0	1	13.30	1.0	19.0	25.0	75	1.0	100	50
SAC15	15.0	1	16.70	1.0	23.6	20.0	75	1.0	100	50
SAC18	18.0	1	20.00	1.0	28.8	15.0	75	1.0	100	50
SAC22	22.0	1	24.40	1.0	35.4	14.0	75	1.0	100	50
SAC26	26.0	1	28.90	1.0	42.3	11.1	75	1.0	100	50
SAC30	30.0	1	33.30	1.0	48.6	10.0	75	1.0	100	50
SAC36	36.0	1	40.00	1.0	60.0	8.6	75	1.0	100	50
SAC45	45.0	1	50.00	1.0	77.0	6.8	150	1.0	100	50
SAC50	50.0	1	55.50	1.0	88.0	5.8	150	1.0	100	50

FIG.1 - PEAK PULSE POWER RATING CURVE

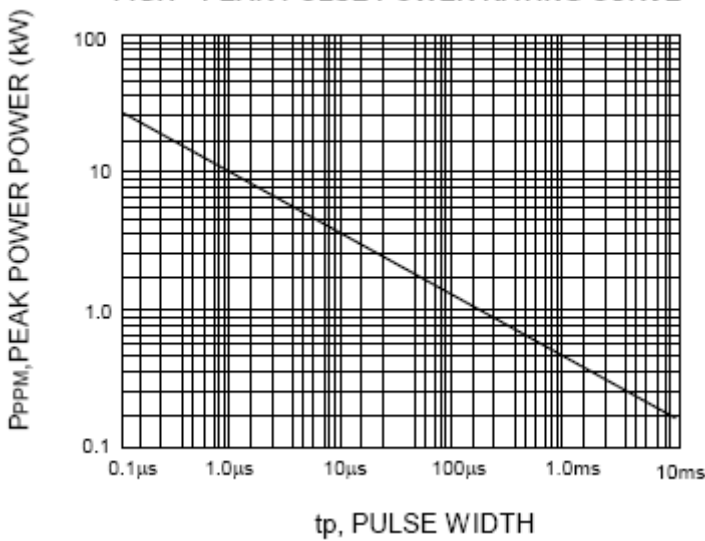


FIG.2 - PULSE DERATING CURVE

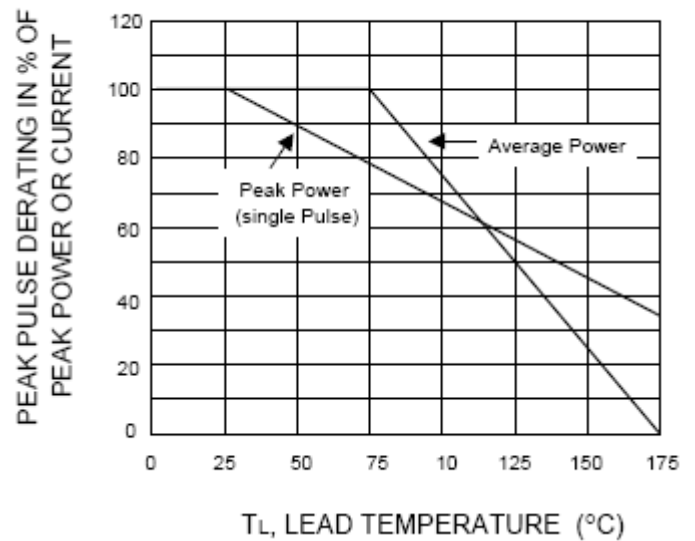


FIG.3 - PULSE WAVEFORM

