

# Kingtronics®

# GBJ3501 THRU GBJ3510

**SINGLE-PHASE BRIDGE RECTIFIER GLASS PASSIVATED BRIDGE RECTIFIERS**  
**REVERSE VOLTAGE 100 to 1000 Volts FORWARD CURRENT 35 Ampere**

## FEATURES

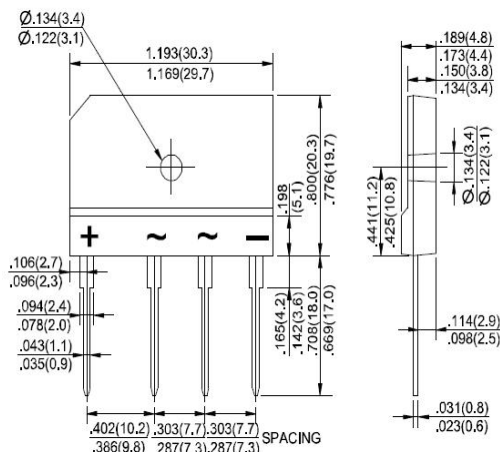
- Rating to 1000V PRV
- Ideal for printed circuit board
- Low forward voltage drop, high current capability
- Reliable low cost construction utilizing molded plastic technique results in inexpensive product
- The plastic material has UL flammability classification 94V-0
- Electrically isolated base-1500 Volts

## MECHANICAL DATA

- Polarity: Symbols molded on body
- Weight: 0.26 ounces, 7.0 grams
- Mounting position : Any

## MAXIMUM RATINGS AND ELECTRICAL CHARACTERISTICS

Ratings at 25°C ambient temperature unless otherwise specified , Single phase, half wave, 60Hz, resistive or inductive load. **Dimensions in inches and (millimeters)**  
 For capacitive load derate current by 20%

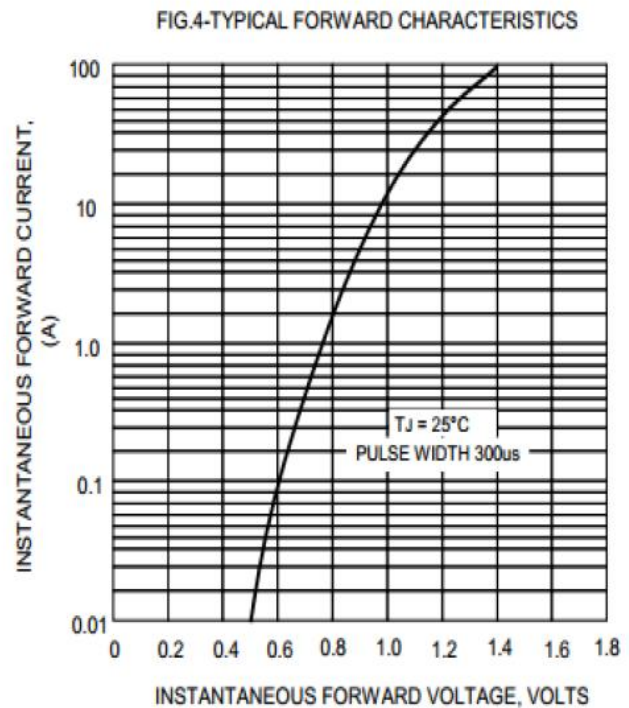
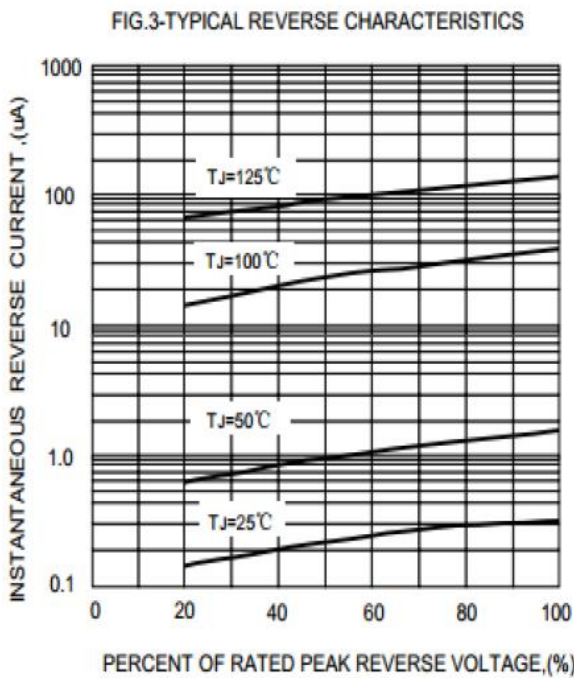
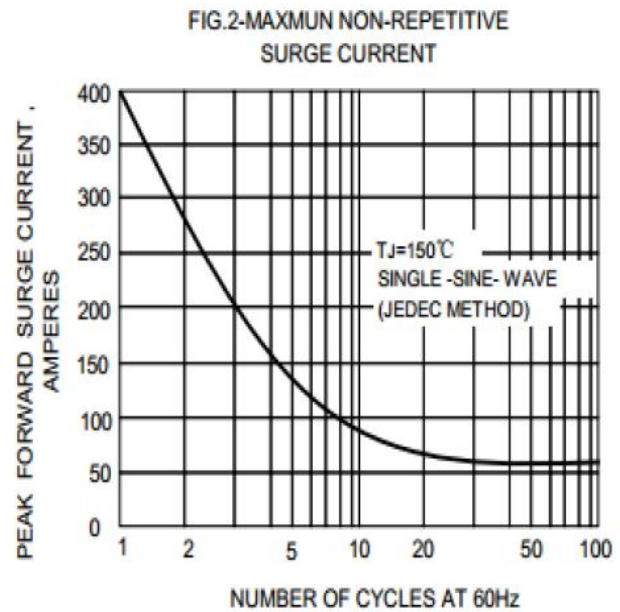
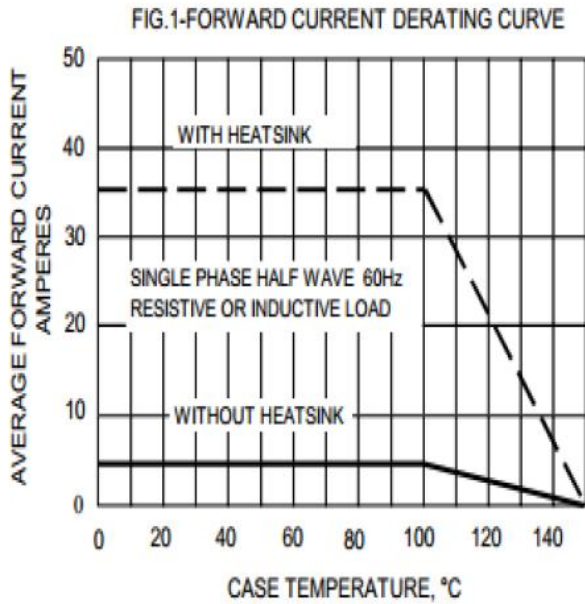


PARAMETER	SYMBOL	GBJ35005	GBJ3501	GBJ3502	GBJ3504	GBJ3506	GBJ3508	GBJ3510	UNIT	
Maximum Recurrent Peak Reverse	$V_{RRM}$	50	100	200	400	600	800	1000	V	
Maximum RMS Voltage	$V_{RMS}$	35	70	140	280	420	560	700	V	
Maximum DC Blocking Voltage	$V_{DC}$	50	100	200	400	600	800	1000	V	
Maximum Average Forward (with heatsink Note 2) Rectified Current @ $T_C=110^\circ C$ (without heatsink)	$I_{(AV)}$					35.0 5.0				A
Peak Forward Surge Current 8.3ms single half sine-wave superimposed on rated load (JEDEC METHOD)	$I_{FSM}$					400				A
Maximum forward Voltage at 17.5A DC	$V_F$					1.1				V
Maximum DC Reverse Current @ $T_J=25^\circ C$ at Rated DC Blocking voltage @ $T_J=125^\circ C$	$I_R$					10.0 500				$\mu A$
$I^2t$ Rating for fusing ( $t < 8.3ms$ )	$I^2t$					510				$A^2S$
Typical Junction Capacitance per element (Note 1)	$C_J$					85				pF
Typical Thermal Resistance (Note 2)	$R_{\theta JC}$					0.6				$^\circ C/W$
Operating Temperature Range	$T_J$					-55 to +150				$^\circ C$
Storage Temperature Range	$T_{STG}$					-55 to +150				$^\circ C$

1- Measured at 1.0MHz and applied reverse voltage of 4.0V DC.  
 2- Device mounted on 300mm x 300mm x 1.6mm Cu Plate Heatsink.

**Kingtronics® International Company**

## RATINGS AND CHARACTERISTIC CURVES



Note: Specifications are subject to change without notice.