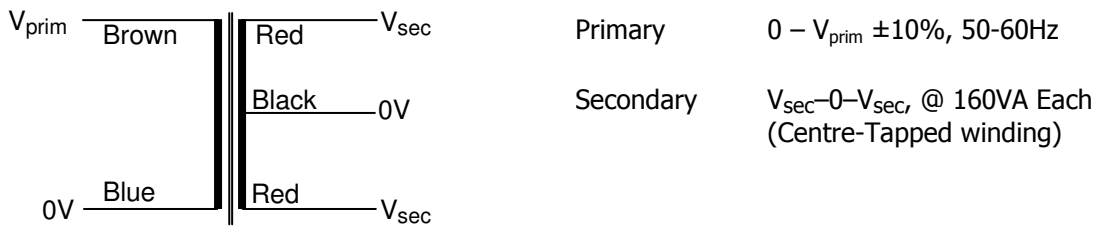


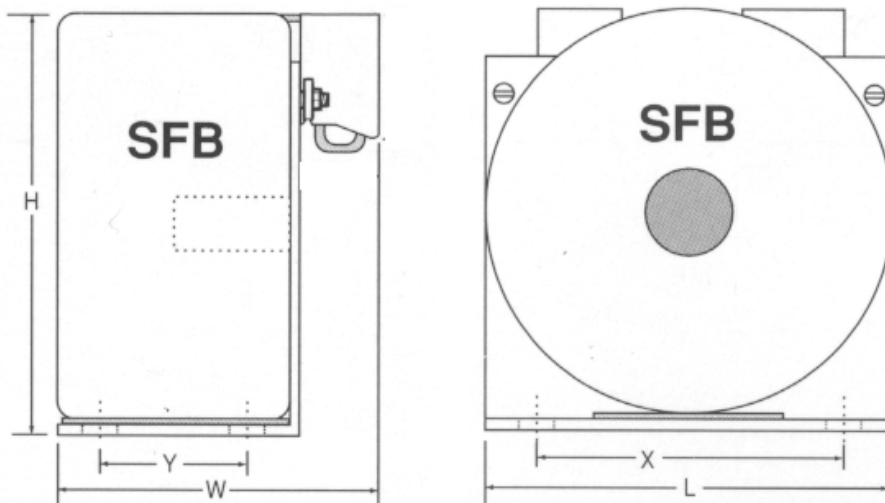
Datasheet :: Control Panel Transformers :: 320VA



	Nuvotem Talema Part Number	Primary V_{prim} [V]	Full Load V_{sec} [V]	Rated Current Per Sec [A]	No Load V_{sec} [V]
**	SFB0320-230-12	230	12-0-12	13.333	13.12-0-13.12
	SFB0320-230-24	230	24-0-24	6.667	25.95-0-25.95
	SFB0320-230-55	230	55-0-55	2.909	59.07-0-59.07
**	SFB0320-400-12	400	12-0-12	13.333	13.12-0-13.12
	SFB0320-400-24	400	24-0-24	6.667	25.95-0-25.95
	SFB0320-400-55	400	55-0-55	2.909	59.07-0-59.07

Temperature Class: Winding Wire (Primary & Secondary) Class H (180 °C)
 Insulation between windings Class B (130 °C)
 Connection lead insulation Class A (105 °C)

Standards: Designed and manufactured to conform to the requirements of :
 EN61558 Class II, Non-Short-Circuit-Proof
 EN60065 Class II (IEC65)
 EN60950 Class II
 VDE0550 Class II
 VDE0551 Class II
 BS415 Class II



Physical Data Dimensions (L x W x H) 117 x 82 x 120mm
 Mounting Holes (X x Y) 96 x 43mm between centres
 Approximate Weight 2.50 Kg

Terminations Screw terminals suitable for conductors 0.5mm² to 4mm², rated at 16A (VDE0551)
 Material : Polyamide 6/6 (PA 6/6), Meets requirements of VBG4 and VDE0106, part 100, "Finger Safety Guard" VDE0470, Part 1
 ** Note : Items marked ** have two terminals for secondary 0V, due to high current.