

# Keysight Technologies

## BenchVue Electronic Load App

Data Sheet



## Simplified Measurement Viewing, Control and Capture

Keysight BenchVue software for the PC reinvents your bench testing by making it simple to connect and record results with your instruments with no programming. You will derive answers faster than ever by easily viewing, logging and exporting measurement data and screen images with a few clicks from a single environment.

Use BenchVue to:

- Visualize multiple measurements simultaneously
- Easily log data, screen images and system state
- Recall past state of your bench to replicate results

Save time with:

- Fast measurement data export in desired formats
- Rapidly prototype custom test sequences
- Quickly access manuals, drivers, FAQs and videos

From anywhere:

- Monitor and control your bench from mobile devices

## BenchVue Capabilities and Available Apps

BenchVue provides a wide array of capabilities depending on the instrument application within BenchVue being used. These capabilities will automatically vary based on the functionality of the instrument types and models connected to your PC running BenchVue software. Optional Pro version upgrades are available to extend BenchVue's functionality.

BenchVue consists of different applications tailored to streamline your measurement tasks, and the most commonly used are included in every no cost download of BenchVue (BV0000A). Additional apps can be easily downloaded and installed via the Apps tab within BenchVue.

BenchVue app name	No cost version	Optional Pro upgrade
Test Flow	Included in BV0000A (demo mode only)	BV1001A
Digital Multimeter	Included in BV0000A	BV0001A
Function Generator	Included in BV0000A	BV0002A
Power Supply	Included in BV0000A	BV0003A
Oscilloscope	Included in BV0000A	BV0004A
Spectrum Analyzer	Available in BV0000A	BV0005A
Data Acquisition	Available in BV0000A	BV0006A
Power Meter	Available in BV0000A	BV0007A
Network Analyzer	Available in BV0000A	N/A
Electronic Load	Available in BV0000A	N/A
Power Analyzer	Available in BV0000A	N/A

## Plug and Play Instrument Control

Connecting and controlling an instrument to BenchVue is as simple as plugging it in and launching the BenchVue instrument application. No programming or separate instrument drivers required.

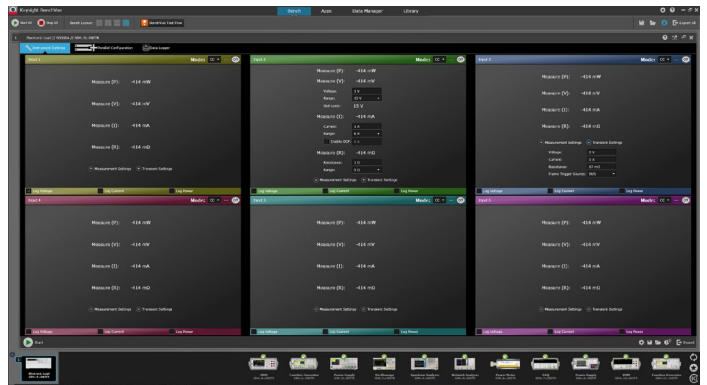


## Electronic Load App

The Electronic Load app is a new app available in BenchVue. This app adds support for Keysight electronic loads. With the easy-to-use BenchVue interface, now you can connect, control, and visualize your electronic load measurements easier than ever before.

Controls and measurements used in the Electronic Load app are also enabled for BenchVue's Test Flow app and provide easier test automation with other instruments. Simply drag and drop configurations and measurements into BenchVue Test Flow and gain insights into results faster.

## Measurement Viewing



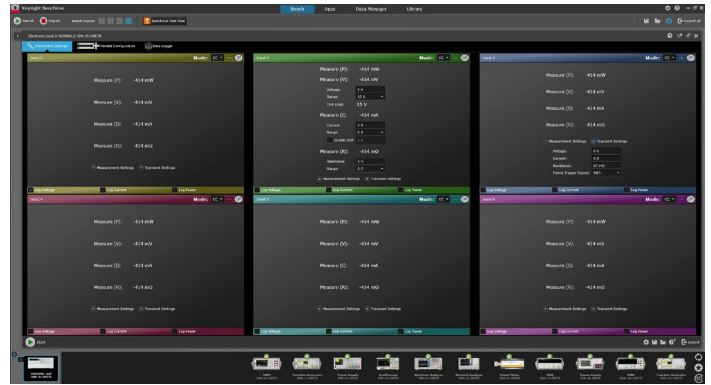
Quickly configure your Keysight electronic loads and see your measurements across multiple channels with one simple interface.



Easily configure parallel channels and visualize data logs of current, voltage, and power.



# BenchVue Electronic Load App



Control your electronic load to set parameters, visualize power input and data log changing voltage and current over time.

## Supported functionality

### Electronic load control

#### Instrument settings

- Set voltage/current/resistance values and range
- Enable/disable over current
- View over voltage protection with limits
- Transient control with
  - Trigger sources: bus, line, hold, external, time

#### Eload data log

- Unrestricted voltage, current, power log
- Logger controls

#### Export screen image

- Clipboard
- File (PNG/JPEG/BMP)

#### Export data

- MATLAB
- Microsoft Excel
- Microsoft Word
- CSV

### Save and recall instrument state

#### Parallel configuration

- SW configure load channels in parallel <sup>1</sup>
- Pseudo naming of parallel channel for easy single setting/control

## Supported models (4)

N3300A <sup>2</sup>, N3301A <sup>2</sup>, 6060B, 6063B

1. External hardware configuration necessary for parallel channels.
2. Modules that are compatible with these mainframes are supported.

## System and Installation Requirements

### Computer operating system

Windows 10, 8, 7	<ul style="list-style-type: none"> <li>- Windows 10 32-bit and 64-bit (Professional, Enterprise, Education, Home versions)</li> <li>- Windows 8 32-bit and 64-bit (Professional, Enterprise, Core)</li> <li>- Windows 7 SP1 and later 32-bit and 64-bit (Professional, Enterprise, Ultimate, Home Basic, Home Premium)</li> </ul>
------------------	---

Computer hardware	Windows 10, 8 and 7 <ul style="list-style-type: none"> <li>- Processor: 1 GHz or faster (2 GHz or greater recommended)</li> <li>- RAM: 1 GB (32-bit) or 2 GB (64-bit) (3 GB or greater recommended)</li> </ul>
-------------------	--

Interfaces	USB, GPIB, LAN, RS-232
------------	------------------------

Display resolution	1024 x 768 minimum for single instrument view (higher resolutions are recommended for multiple instrument view)
--------------------	---

### Additional requirements

BenchVue requires a VISA (Keysight or National Instruments) when used to connect to physical instruments. Keysight IO Libraries Suite, which contains the necessary VISA, will be downloaded and installed automatically when BenchVue is installed if needed. IO Libraries Suite 16.3 or newer is recommended. IO Libraries Suite information is available at: [www.keysight.com/find/iosuite](http://www.keysight.com/find/iosuite)

### Mobile devices

Apple iPhone, iPad, iPod Touch all models; iOS 6.0 and later.  
Android phone and tablets; Android 2.3.5 and later.

With BenchVue, It's as Simple as:  
**Click. Capture. Done.**

### BenchVue software for PC

Download cost free at: [www.keysight.com/find/BenchVue](http://www.keysight.com/find/BenchVue)

### BenchVue software for mobile devices

Find BenchVue mobile for your respective device by visiting [www.keysight.com/find/BenchVueMobile](http://www.keysight.com/find/BenchVueMobile)

## Download your next insight

Keysight software is downloadable expertise. From first simulation through first customer shipment, we deliver the tools your team needs to accelerate from data to information to actionable insight.

- Electronic design automation (EDA) software
- Application software
- Programming environments
- Utility software

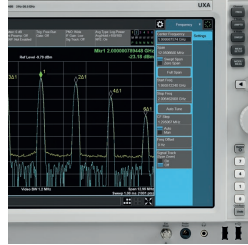
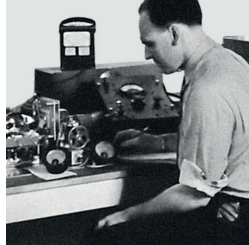


Learn more at [www.keysight.com/find/software](http://www.keysight.com/find/software)

Start with a 30-day free trial.  
[www.keysight.com/find/free\\_trials](http://www.keysight.com/find/free_trials)

## From Hewlett-Packard through Agilent to Keysight

For more than 75 years, we've been helping you unlock measurement insights. Our unique combination of hardware, software and people can help you reach your next breakthrough. **Unlocking measurement insights since 1939.**



For more information on Keysight Technologies' products, applications or services, please contact your local Keysight office. The complete list is available at: [www.keysight.com/find/contactus](http://www.keysight.com/find/contactus)

### Americas

Canada	(877) 894 4414
Brazil	55 11 3351 7010
Mexico	001 800 254 2440
United States	(800) 829 4444

### Asia Pacific

Australia	1 800 629 485
China	800 810 0189
Hong Kong	800 938 693
India	1 800 11 2626
Japan	0120 (421) 345
Korea	080 769 0800
Malaysia	1 800 888 848
Singapore	1 800 375 8100
Taiwan	0800 047 866
Other AP Countries	(65) 6375 8100

### Europe & Middle East

Austria	0800 001122
Belgium	0800 58580
Finland	0800 523252
France	0805 980333
Germany	0800 6270999
Ireland	1800 832700
Israel	1 809 343051
Italy	800 599100
Luxembourg	+32 800 58580
Netherlands	0800 0233200
Russia	8800 5009286
Spain	800 000154
Sweden	0200 882255
Switzerland	0800 805353
	Opt. 1 (DE)
	Opt. 2 (FR)
	Opt. 3 (IT)
United Kingdom	0800 0260637

For other unlisted countries:  
[www.keysight.com/find/contactus](http://www.keysight.com/find/contactus)  
 (BP-01-01-16)

### myKeysight

#### myKeysight

[www.keysight.com/find/mykeysight](http://www.keysight.com/find/mykeysight)

A personalized view into the information most relevant to you.

#### Keysight Channel Partners

[www.keysight.com/find/channelpartners](http://www.keysight.com/find/channelpartners)

Get the best of both worlds: Keysight's measurement expertise and product breadth, combined with channel partner convenience.

[www.keysight.com](http://www.keysight.com)

[www.keysight.com/find/benchvue](http://www.keysight.com/find/benchvue)



Unlocking Measurement Insights

This information is subject to change without notice.  
 © Keysight Technologies, 2016  
 Published in USA, February 5, 2016  
 5992-1387EN  
[www.keysight.com](http://www.keysight.com)