

# INTEGRATED IQ DEMODULATOR

 Check for Samples: [TRF371135](#)

## FEATURES

- Frequency Range: 1700 MHz to 6000 MHz
- Integrated Baseband Programmable-Gain Amplifier
- On-Chip Programmable Baseband Filter
- High Out-of-Band IP3: 22 dBm at 3550 MHz
- High Out-of-Band IP2: 52 dBm at 3550 MHz
- Hardware and Software Power Down
- Three-Wire Serial Interface
- Single Supply: 4.5-V to 5.5-V Operation
- Silicon Germanium Technology

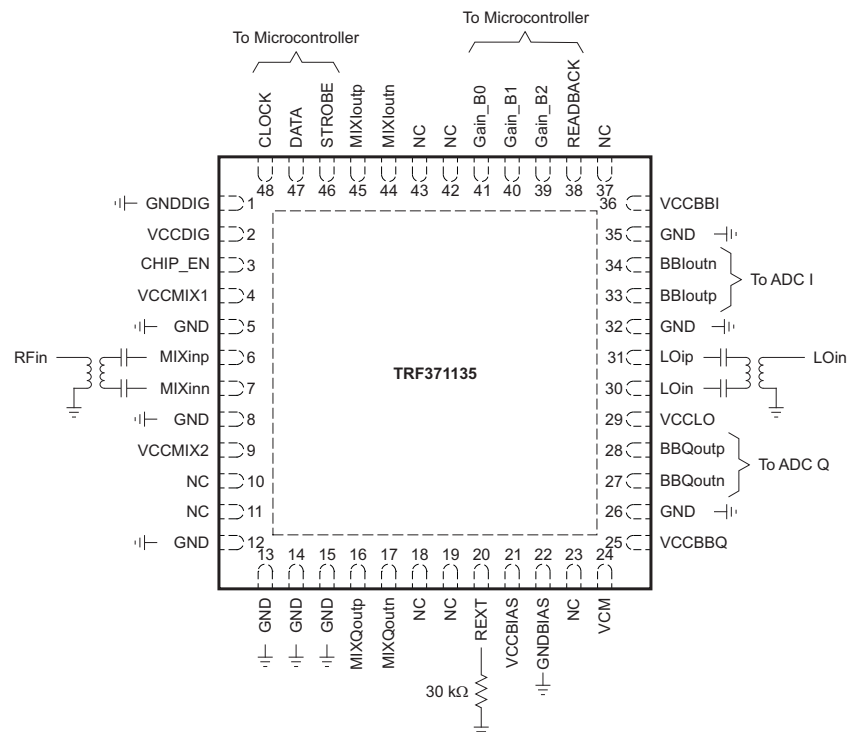
## APPLICATIONS

- Multicarrier Wireless Infrastructure
- WiMAX
- High-Linearity Direct-Downconversion Receiver
- LTE (Long Term Evolution)

## DESCRIPTION

The TRF371135 is a highly linear and integrated direct-conversion quadrature demodulator. The TRF371135 integrates balanced I and Q mixers, LO buffers, and phase splitters to convert an RF signal directly to I and Q baseband. The on-chip programmable-gain amplifiers allow adjustment of the output signal level without the need for external variable-gain (attenuator) devices. The TRF371135 integrates programmable baseband low-pass filters that attenuate nearby interference, eliminating the need for an external baseband filter.

Housed in a 7-mm × 7-mm QFN package, the TRF371135 provides the smallest and most integrated receiver solution available for high-performance equipment.



Please be aware that an important notice concerning availability, standard warranty, and use in critical applications of Texas Instruments semiconductor products and disclaimers thereto appears at the end of this data sheet.

All trademarks are the property of their respective owners.

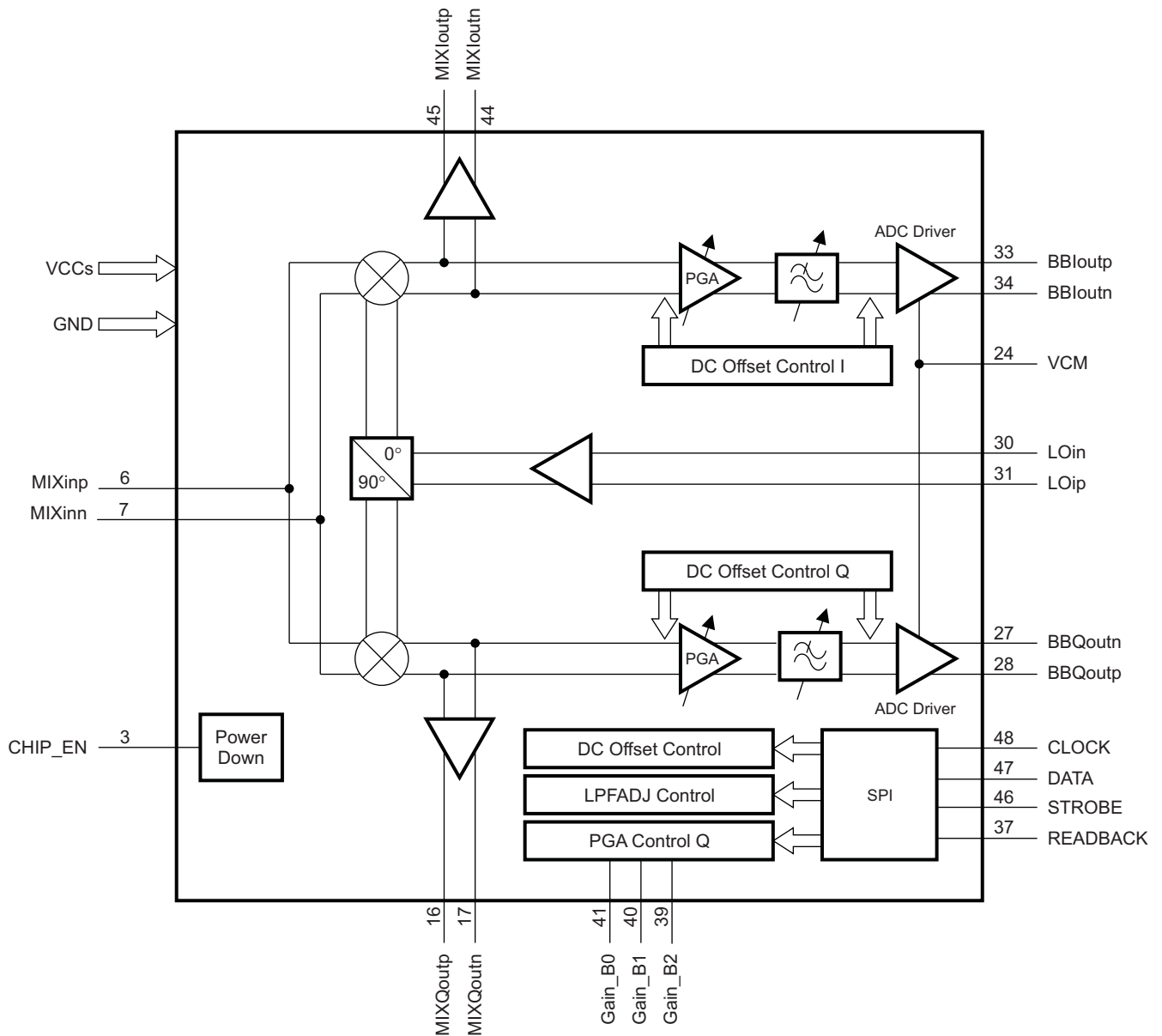


These devices have limited built-in ESD protection. The leads should be shorted together or the device placed in conductive foam during storage or handling to prevent electrostatic damage to the MOS gates.

**AVAILABLE DEVICE OPTIONS<sup>(1)</sup>**

PRODUCT	PACKAGE LEAD	PACKAGE DESIGNATOR(1)	SPECIFIED TEMPERATURE RANGE	PACKAGE MARKINGS	ORDERING NUMBER	TRANSPORT MEDIA, QUANTITY
TRF371135	QFN-48	RGZ	-40°C to 85°C	TRF371135	TRF371135IRGZR	Tape and reel, 2500
					TRF371135IRGZT	Tape and reel, 500

**FUNCTIONAL DIAGRAM**

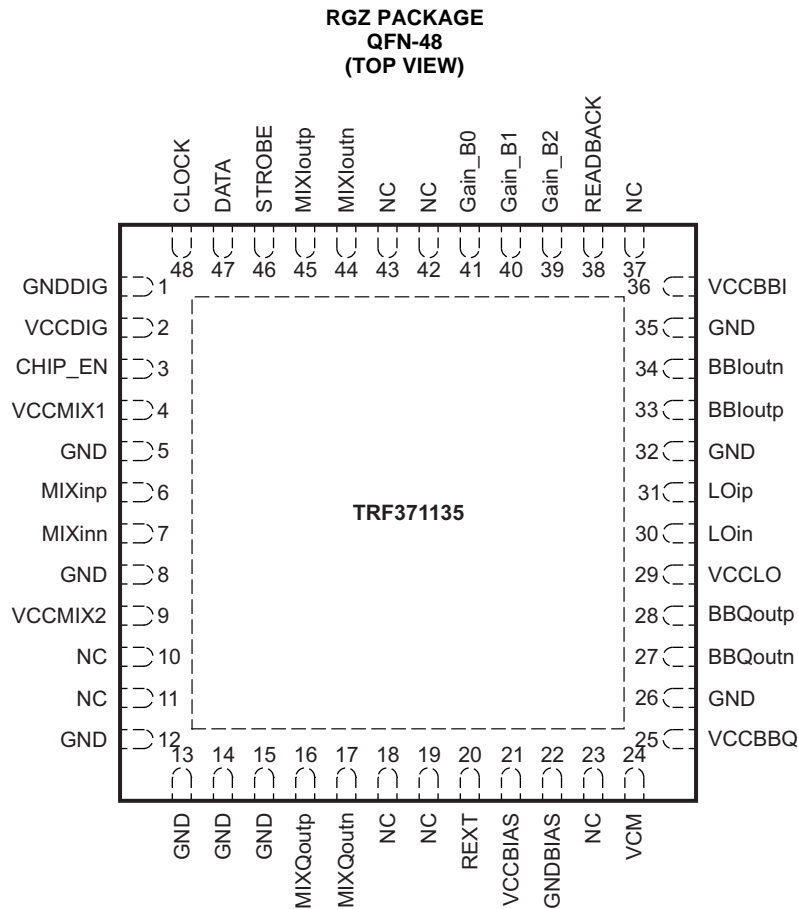


B0385-01

(1) For the most current package and ordering information, see the Package Option Addendum at the end of this document, or see the TI web site at [www.ti.com](http://www.ti.com).

**DEVICE INFORMATION**

**PIN ASSIGNMENTS**



**PIN FUNCTIONS**

PIN		I/O	DESCRIPTION
NO.	NAME		
1	GNDDIG		Digital ground
2	VCCDIG		Digital power supply
3	CHIP_EN	I	Chip enable
4	VCCMIX1		Mixer power supply
5	GND		Ground
6	MIXinp	I	Mixer input: positive terminal
7	MIXinn	I	Mixer input: negative terminal
8	GND		Ground
9	VCCMIX2		Mixer power supply
10	NC		No connect
11	NC		No connect
12	GND		Ground
13	GND		Ground
14	GND		Ground
15	GND		Ground

**PIN FUNCTIONS (continued)**

PIN		I/O	DESCRIPTION
NO.	NAME		
16	MIXQoutp	O	Mixer Q output: positive terminal
17	MIXQoutn	O	Mixer Q output: negative terminal
18	NC		No connect
19	NC		No connect
20	REXT	O	Reference bias external resistor
21	VCCBIAS		Bias block power supply
22	GNDBIAS		Bias block ground
23	NC		No connect
24	VCM	I	Baseband common-mode input voltage
25	VCCBBQ		Baseband Q chain power supply
26	GND		Ground
27	BBQoutn	O	Baseband Q (in quadrature) output: negative terminal
28	BBQoutp	O	Baseband Q (in quadrature) output: positive terminal
29	VCCLO		Local oscillator power supply
30	LOin	I	Local oscillator input: negative terminal
31	LOip	I	Local oscillator input: positive terminal
32	GND		Ground
33	BBIoutp	O	Baseband I (in-phase) output: positive terminal
34	BBIoutn	O	Baseband I (in-phase) output: negative terminal
35	GND		Ground
36	VCCBBI		Baseband I (in phase) power supply
37	NC		No connect
38	READBACK	O	SPI readback data
39	Gain_B2	I	PGA fast gain control bit 2
40	Gain_B1	I	PGA fast gain control bit 1
41	Gain_B0	I	PGA fast gain control bit 0
42	NC		No connect
43	NC		No connect
44	MIXIoutn	O	Mixer I output: negative terminal
45	MIXIoutp	O	Mixer I output: positive terminal
46	STROBE	I	SPI enable
47	DATA	I	SPI data input
48	CLOCK	I	SPI clock input

## ABSOLUTE MAXIMUM RATINGS

over operating free-air temperature range (unless otherwise noted)<sup>(1)</sup>

	VALUE	UNIT
Supply voltage range <sup>(2)</sup>	–0.3 to 6	V
Digital I/O voltage range	–0.3 to 6	V
Operating free-air temperature range, $T_A$	–40 to 85	°C
Operating virtual junction temperature range, $T_J$	–40 to 150	°C
Storage temperature range, $T_{stg}$	–65 to 150	°C

(1) Stresses beyond those listed under *Absolute Maximum Ratings* may cause permanent damage to the device. These are stress ratings only, and functional operation of the device at these or any other conditions beyond those indicated under *Recommended Operating Conditions* is not implied. Exposure to absolute-maximum-rated conditions for extended periods may affect device reliability.

(2) All voltage values are with respect to network ground terminal.

## RECOMMENDED OPERATING CONDITIONS

over operating free-air temperature range (unless otherwise noted)

	MIN	NOM	MAX	UNIT
$V_{CC}$ Power-supply voltage	4.5	5	5.5	V
Power-supply voltage ripple			940	$\mu V_{pp}$
$T_A$ Operating free-air temperature range	–40		85	°C
$T_J$ Operating virtual junction temperature range	–40		150	°C

## THERMAL CHARACTERISTICS

over recommended operating free-air temperature range (unless otherwise noted)

PARAMETER <sup>(1)</sup>		TEST CONDITIONS	MIN	TYP	MAX	UNIT
$R_{\theta JA}$	Thermal resistance, junction-to-ambient	Soldered slug, no airflow		26		°C/W
		Soldered slug, 200-LFM airflow		20.1		
		Soldered slug, 400-LFM airflow		17.4		
$R_{\theta JA}^{(2)}$				25		
$R_{\theta JB}$	Thermal resistance, junction-to-board			12		°C/W

(1) Determined using JEDEC standard JESD-51 with high-K board

(2) 16 layers, high-K board

## ELECTRICAL CHARACTERISTICS

$V_{CC} = 5\text{ V}$ , LO power = 0 dBm,  $T_A = 25^\circ\text{C}$  (unless otherwise noted)

PARAMETERS		TEST CONDITIONS	MIN	TYP	MAX	UNIT
<b>DC PARAMETERS</b>						
$I_{CC}$	Total supply current			370		mA
	Power-down current			2		mA
<b>IQ DEMODULATOR AND BASEBAND SECTION</b>						
$f_{RF}$	Frequency range		1700		6000	MHz
	Gain range		22	24		dB
	Gain step	See <sup>(1)</sup>		1		dB
$P_{in_{max}}$	Max. RF power input	Before damage		25		dBm
OIP3	Output third-order intercept point	Gain setting = 24 <sup>(2)</sup>		30		dBV <sub>RMS</sub>
P1dB <sub>min</sub>	Min. output compression point	1 tone <sup>(3)</sup>		3		dBV <sub>RMS</sub>
$f_{min}$	Min. baseband low-pass filter cutoff frequency	1-dB point <sup>(4)</sup>		700		kHz
$f_{max}$	Max. baseband low-pass filter cutoff frequency	3-dB point <sup>(4)</sup>	15			MHz
$f_{bypass}$	Baseband low-pass filter cutoff frequency in bypass mode	3-dB point <sup>(5)</sup>		30		MHz
$F_{sel}$	Baseband relative attenuation at LPF cutoff frequency ( $f_C$ ) <sup>(6)</sup>	$1 \times f_C$		1		dB
		$1.5 \times f_C$		8		
		$2 \times f_C$		32		
		$3 \times f_C$		54		
		$4 \times f_C$		75		
		$5 \times f_C$		90		
	Image suppression	$f_{LO} = 3550\text{ MHz}$		-35		dB
	Output BB attenuator			3		dB
	Output load impedance	Parallel resistance		1		k $\Omega$
		Parallel capacitance		20		pF
$V_{cm}$	Output, common-mode	Measured at I- and Q-channel baseband outputs		1.5		V
	Baseband harmonic level	Second harmonic <sup>(7)</sup>		-95		dBc
		Third harmonic <sup>(7)</sup>		-103		dBc
<b>LOCAL OSCILLATOR PARAMETERS</b>						
	Local oscillator frequency		1700		6000	MHz
	LO input level	See <sup>(8)</sup>	-3	0	6	dBm
	LO leakage	At MIXinn/p at 0-dBm LO drive level		-58		dBm
<b>DIGITAL INTERFACE</b>						
$V_{IH}$	High-level input voltage		$0.6 \times V_{CC}$	5	$V_{CC}$	V
$V_{IL}$	Low-level input voltage		0		0.8	V
$V_{OH}$	High-level output voltage		$0.8 \times V_{CC}$			V
$V_{OL}$	Low-level output voltage				$0.2 \times V_{CC}$	V

- (1) Two consecutive gain settings
- (2) Two CW tones at an offset from LO frequency smaller than the baseband-filter cutoff frequency. Performance is set by baseband circuitry regardless of LO frequency.
- (3) Single CW tone at an offset from LO frequency smaller than the baseband-filter cutoff frequency. Performance is set by baseband circuitry regardless of LO frequency.
- (4) Baseband low-pass filter cutoff frequency is programmable through SPI register LPFADJ. LPFADJ = 0 corresponds to maximum bandwidth; LPFADJ = 255 corresponds to minimum BW.
- (5) Filter Ctrl setting equal to 0
- (6) Attenuation relative to passband gain
- (7) LO frequency set to 3.55 GHz. I or Q output power level -6 dBV<sub>RMS</sub> differential. Gain setting at 24. DC offset calibration engaged. Input signal set at 1-MHz offset.
- (8) LO power outside of this range is possible but may introduce degraded performance.

## ELECTRICAL CHARACTERISTICS

$V_{CC} = 5\text{ V}$ , LO power = 0 dBm,  $T_A = 25^\circ\text{C}^{(1)}$  (unless otherwise noted)

PARAMETER		TEST CONDITIONS	MIN	TYP	MAX	UNIT
<b><math>f_{LO} = 1740\text{ MHz}</math></b>						
$G_{max}$	Maximum gain <sup>(2)</sup>	Gain setting = 24		45		dB
NF	Noise figure	Gain setting = 24		10		dB
IIP3	Third-order input intercept point	Gain setting = 24 <sup>(3)(4)</sup>		19		dBm
IIP2	Second-order input intercept point	Gain setting = 24 <sup>(4)(5)</sup>		60		dBm
<b><math>f_{LO} = 1950\text{ MHz}</math></b>						
$G_{max}$	Maximum gain <sup>(2)</sup>	Gain setting = 24		44.3		dB
NF	Noise figure	Gain setting = 24		10.5		dB
IIP3	Third-order input intercept point	Gain setting = 24 <sup>(3)(4)</sup>		20		dBm
IIP2	Second-order input intercept point	Gain setting = 24 <sup>(4)(5)</sup>		57		dBm
<b><math>f_{LO} = 2025\text{ MHz}</math></b>						
$G_{max}$	Maximum gain <sup>(2)</sup>	Gain setting = 24		44		dB
NF	Noise figure	Gain setting = 24		11		dB
IIP3	Third-order input intercept point	Gain setting = 24 <sup>(3)(4)</sup>		21		dBm
IIP2	Second-order input intercept point	Gain Setting = 24 <sup>(4)(5)</sup>		57		dBm
<b><math>f_{LO} = 2400\text{ MHz}</math></b>						
$G_{max}$	Maximum gain <sup>(2)</sup>	Gain setting = 24		43		dB
N3F	Noise figure	Gain setting = 24		12		dB
IIP3	Third-order input intercept point	Gain setting = 24 <sup>(3)(4)</sup>		23.5		dBm
IIP2	Second-order input intercept point	Gain setting = 24 <sup>(4)(5)</sup>		58		dBm
<b><math>f_{LO} = 3550\text{ MHz}</math></b>						
$G_{max}$	Maximum gain <sup>(2)</sup>	Gain setting = 24		40		dB
NF	Noise figure	Gain setting = 24		13.8		dB
		Gain setting = 16		15		dB
IIP3	Third-order input intercept point	Gain setting = 24 <sup>(3)(4)</sup>		22		dBm
IIP2	Second-order input intercept point	Gain setting = 24 <sup>(4)(5)</sup>		52		dBm
<b><math>f_{LO} = 5400\text{ MHz}</math></b>						
$G_{max}$	Maximum gain <sup>(2)</sup>	Gain setting = 24		37.5		dB
NF	Noise figure	Gain setting = 24		17.5		dB
IIP3	Third-order input intercept point	Gain setting = 24 <sup>(3)(4)</sup>		22		dBm
IIP2	Second-order input intercept point	Gain setting = 24 <sup>(4)(5)</sup>		60		dBm

(1) For broadband frequency sweeps, the Picosecond balun (model #5310A) is used at the RF and LO inputs. For the frequency band between 3300 MHz and 3800 MHz, the Johanson 3600BL14M050E balun is used. For the frequency band between 4900 MHz and 5900 MHz the Johanson 5400BL15B050E balun is used. Performance parameters adjusted for balun insertion loss. Recommended baluns for respective frequency bands are shown as follows:

1740 MHz: Murata LDB211G8005C-001 (or equivalent)

1950 MHz: Murata LDB211G9005C-001 (or equivalent)

2025 MHz: Murata LDB211G9005C-001 (or equivalent)

2500 MHz: Murata LDB212G4005C-001 (or equivalent)

3550 MHz: Johanson 3600BL14M050E (or equivalent)

5400 MHz: Johanson 5400BL15B050E (or equivalent)

(2) Gain defined as voltage gain from Mixin ( $V_{RMS}$ ) to either baseband output: BBI/Qout ( $V_{RMS}$ )

(3) Two CW tones of  $-30\text{ dBm}$  at  $f_{RF1} = f_{LO} \pm(2 \times f_C)$  and  $f_{RF2} = f_{LO} \pm[(4 \times f_C) + 100\text{ kHz}]$  ( $f_C$  = baseband filter 1-dB cutoff frequency).

(4) Because the 2-tone interferers are outside of the baseband filter bandwidth, the results are inherently independent of the gain setting. Intermodulation parameters are recorded at maximum gain setting, where measurement accuracy is best.

(5) Two CW tones of  $-30\text{ dBm}$  at  $f_{RF1} = f_{LO} \pm(2 \times f_C)$  and  $f_{RF2} = f_{LO} \pm[(2 \times f_C) + 100\text{ kHz}]$ ; IM2 product measured at 100-kHz output frequency ( $f_C$  = baseband filter 1-dB cutoff frequency)

### TIMING REQUIREMENTS

V<sub>CC</sub> = 5 V, LO power = 0 dBm, T<sub>A</sub> = 25°C (unless otherwise noted)

PARAMETER	TEST CONDITIONS	MIN	TYP	MAX	UNIT
t <sub>(CLK)</sub> Clock period		50			ns
t <sub>(CH)</sub> Clock-signal high time		20			ns
t <sub>(CL)</sub> Clock-signal low time		20			ns
t <sub>su1</sub> Setup time, data		10			ns
t <sub>h</sub> Hold time, data		10			ns
t <sub>w</sub> Pulse duration, STROBE		20			ns
t <sub>su2</sub> Setup time, STROBE		10			ns
t <sub>d</sub> Delay time, clock to readback-data output		10			ns

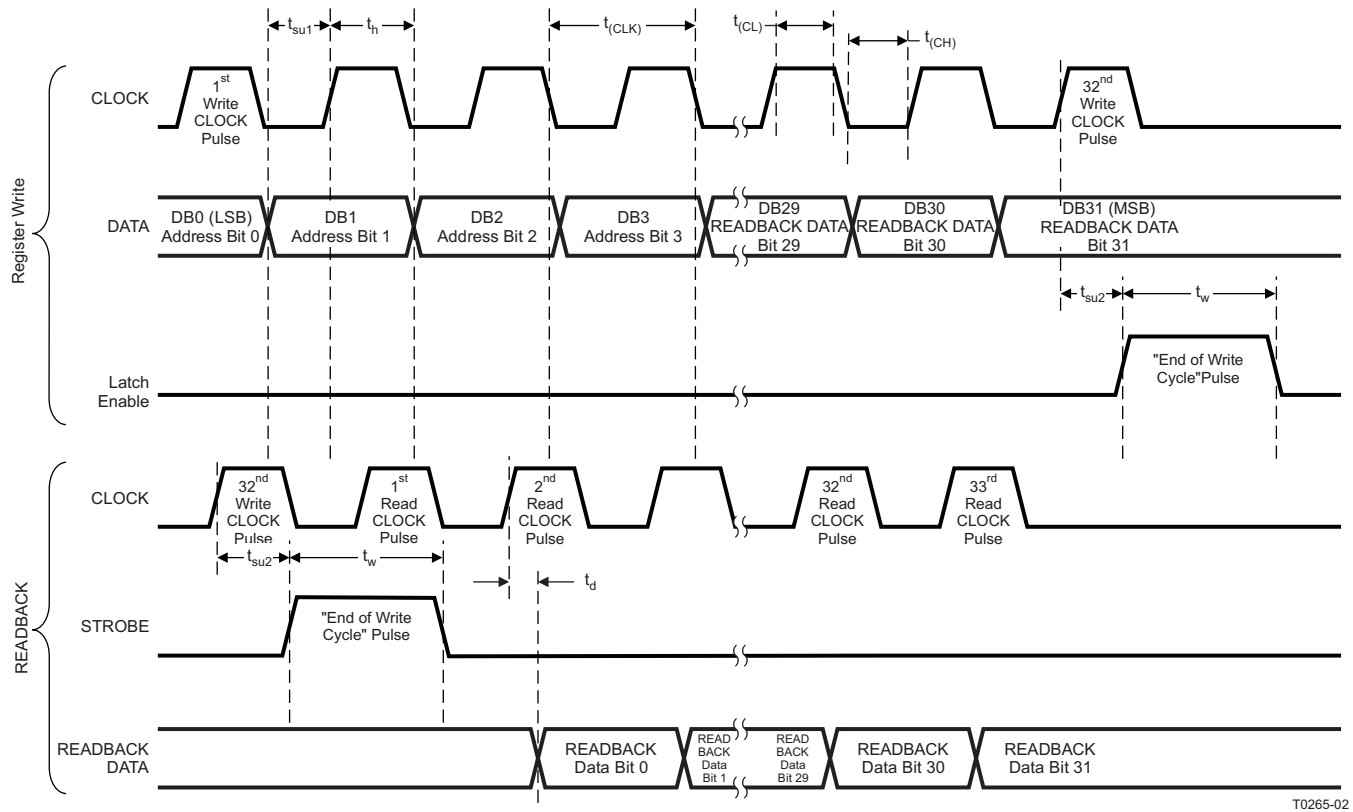


Figure 1. Timing Requirements Diagram

T0265-02



## TYPICAL CHARACTERISTICS

$V_{CC} = 5\text{ V}$ , LO power = 0 dBm,  $T_A = 25^\circ\text{C}$  (unless otherwise noted)

### Table of Graphs

Broadband Data (1700-6000 MHz)		
Gain	vs LO frequency <sup>(1)</sup>	Figure 2, Figure 3, Figure 4
Noise figure	vs LO frequency <sup>(1)</sup>	Figure 5, Figure 6, Figure 7
IIP3	vs LO frequency <sup>(2)(3)(4)</sup>	Figure 8, Figure 9, Figure 10
IIP2	vs LO frequency <sup>(2)(3)(4)</sup>	Figure 11, Figure 12, Figure 13
3.5G Band Data (3300-3800 MHz)		
Gain	vs LO frequency <sup>(5)</sup>	Figure 14, Figure 15, Figure 16
IIP3	vs LO frequency <sup>(3)(4)(5)</sup>	Figure 17, Figure 18, Figure 19, Figure 20
IIP2	vs LO frequency <sup>(3)(4)(5)</sup>	Figure 21, Figure 22, Figure 23, Figure 24
Noise figure	vs LO frequency <sup>(5)</sup>	Figure 25, Figure 26, Figure 27
5G Band Data (4900-5900 MHz)		
Gain	vs LO frequency <sup>(6)</sup>	Figure 28, Figure 29, Figure 30
IIP3	vs LO frequency <sup>(3)(4)(6)</sup>	Figure 31, Figure 32, Figure 33
IIP2	vs LO frequency <sup>(3)(4)(6)</sup>	Figure 34, Figure 35, Figure 36
Noise figure	vs LO frequency <sup>(6)</sup>	Figure 37, Figure 38, Figure 39
Baseband-Related Data		
OIP3	vs Frequency offset <sup>(7)</sup>	Figure 40, Figure 41, Figure 42, Figure 43
Noise figure	vs BB gain setting	Figure 44
Gain	vs BB gain setting	Figure 45
Gain	vs Frequency offset	Figure 46, Figure 47
Gain	vs Frequency offset (bypass mode)	Figure 48, Figure 49
1-dB LPF corner frequency	vs LPFADJ setting	Figure 50
Relative LPF group delay	Frequency offset <sup>(8)</sup>	Figure 51
Image rejection	vs BB frequency offset	Figure 52
DC offset limit	vs Temperature <sup>(9)</sup>	Figure 53
Out-of-band P1dB	vs Relative offset multiplier to corner frequency <sup>(10)</sup>	Figure 54

- (1) Measured with broadband Picosecond 5310A balun on the LO input and single-ended connection on the RF input. Performance gain adjusted for the 3-dB differential to single-ended insertion loss.
- (2) Measured with broadband Picosecond 5310A balun on the LO input and RF input. Balun insertion loss is compensated for in the measurement.
- (3) Out-of-band intercept point is defined with tones that are at least 2 times farther out than the programmed LPF corner frequency that generates an intermodulation tone that falls inside the LPF passband.
- (4) Out-of-band intercept point is dependent on the demodulator performance and not the baseband circuitry; the measurement is taken at maximum gain but is valid across all PGA settings.
- (5) Measured with Johanson 3600BL14M050E balun on the LO input and RF input. All dc-blocking and bypass capacitors are 4.7 pF as listed on the EVM schematic.
- (6) Measured with Johanson 5400 BL15B050E balun on the LO input and RF input. All dc-blocking and bypass capacitors are 1.8 pF as listed on the EVM schematic.
- (7) Measured with filter in bypass mode to characterize the pass-band circuitry across baseband frequencies. Tone spacing set to 100 kHz, and tone frequencies are varied from 5/5.1 MHz to 25/25.1 MHz (x-axis of graph).
- (8) Relative to the low-frequency offset group delay in bypass mode
- (9) I<sub>det</sub> set to 50  $\mu\text{A}$ ; RF signal is off; LO at 2.4 GHz at 0 dBm; Det filter set to 1 kHz; Div set to 1024.
- (10) In-band tone set to 1 MHz; out-of-band jammer tone set to specified relative offset ratio from the programmed corner frequency. Jammer tone is increased until in-band tone compresses 1 dB.

**TYPICAL CHARACTERISTICS, BROADBAND DATA (1700 MHz–6000 MHz)**

$V_{CC} = 5\text{ V}$ , LO power = 0 dBm,  $T_A = 25^\circ\text{C}$  (unless otherwise noted)

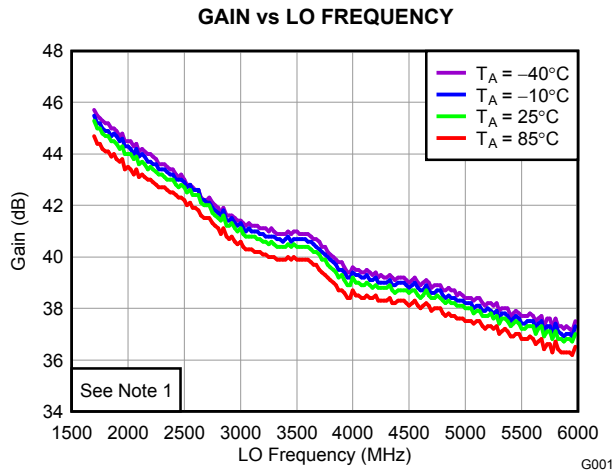


Figure 2.

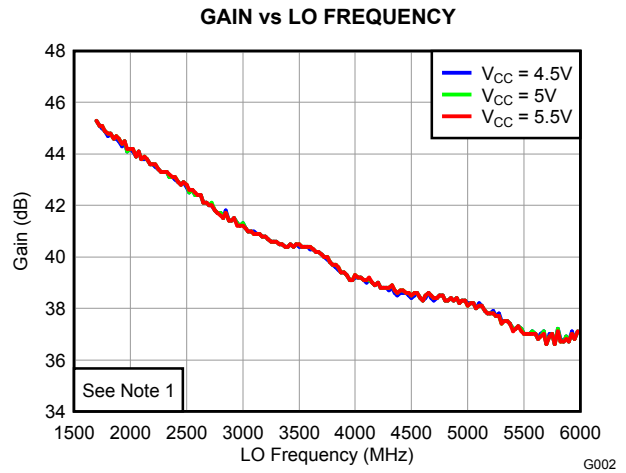


Figure 3.

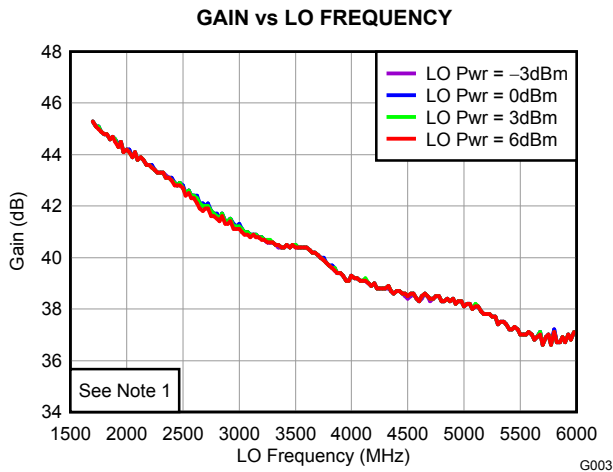


Figure 4.

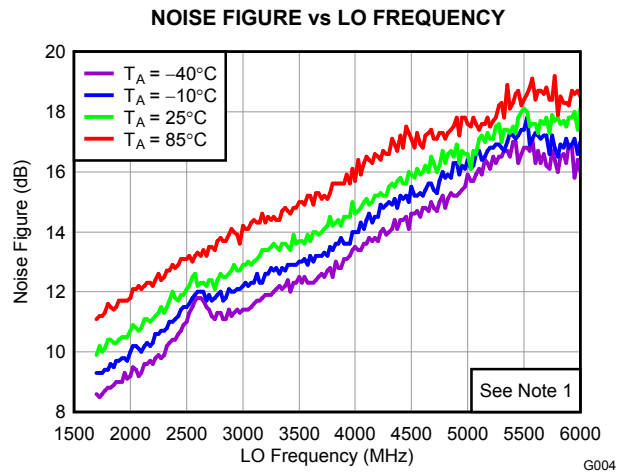


Figure 5.

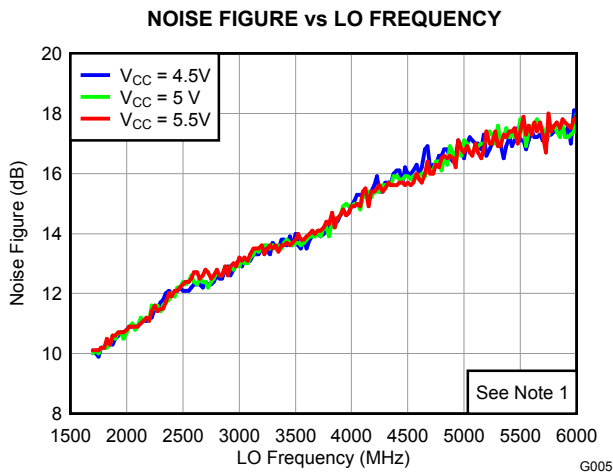


Figure 6.

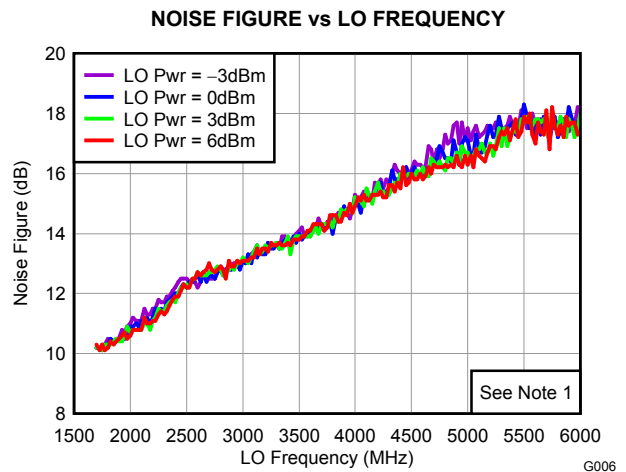
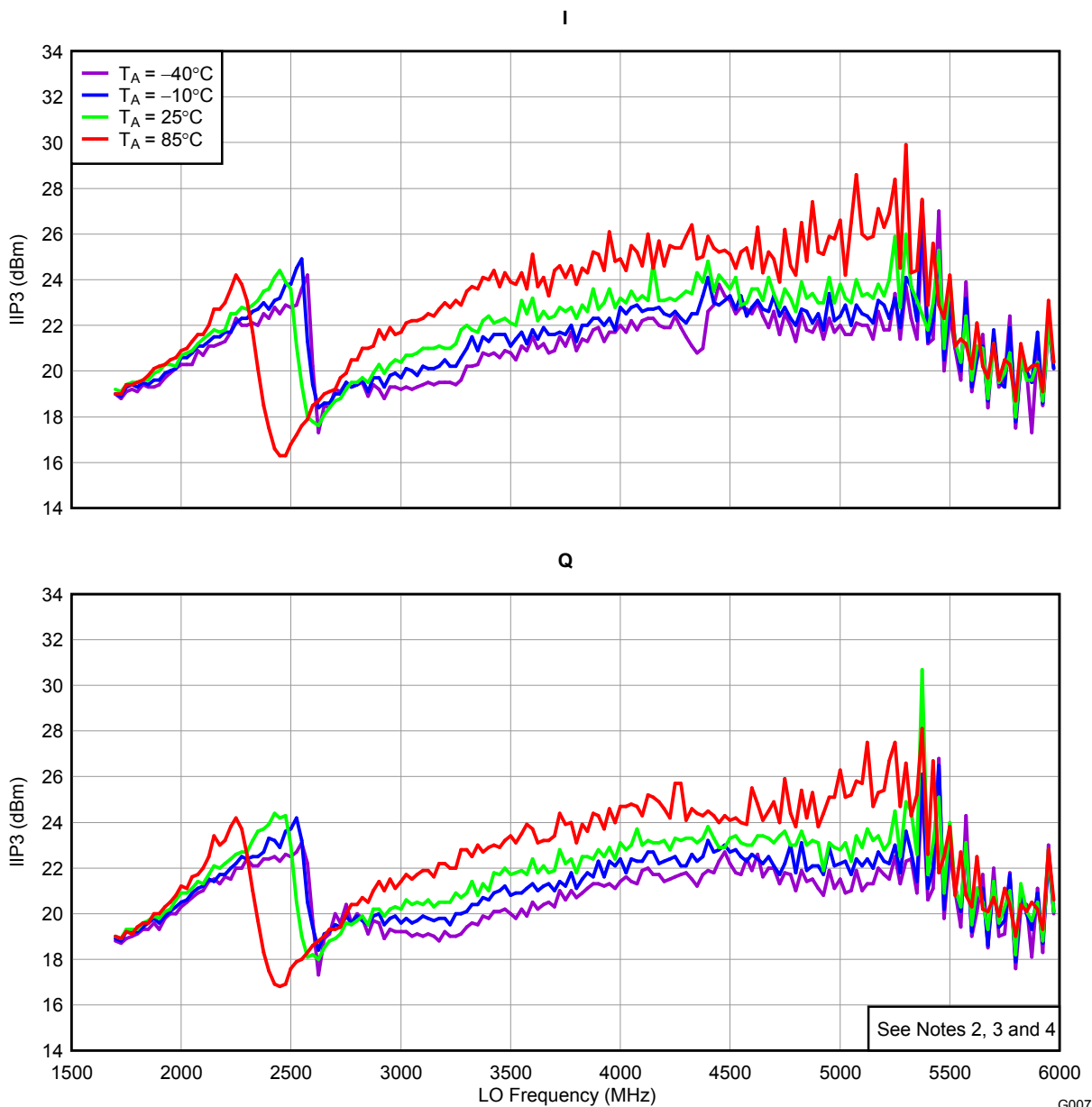


Figure 7.

**TYPICAL CHARACTERISTICS, BROADBAND DATA (1700 MHz–6000 MHz) (continued)**

$V_{CC} = 5\text{ V}$ , LO power = 0 dBm,  $T_A = 25^\circ\text{C}$  (unless otherwise noted)

**IIP3 vs LO FREQUENCY**

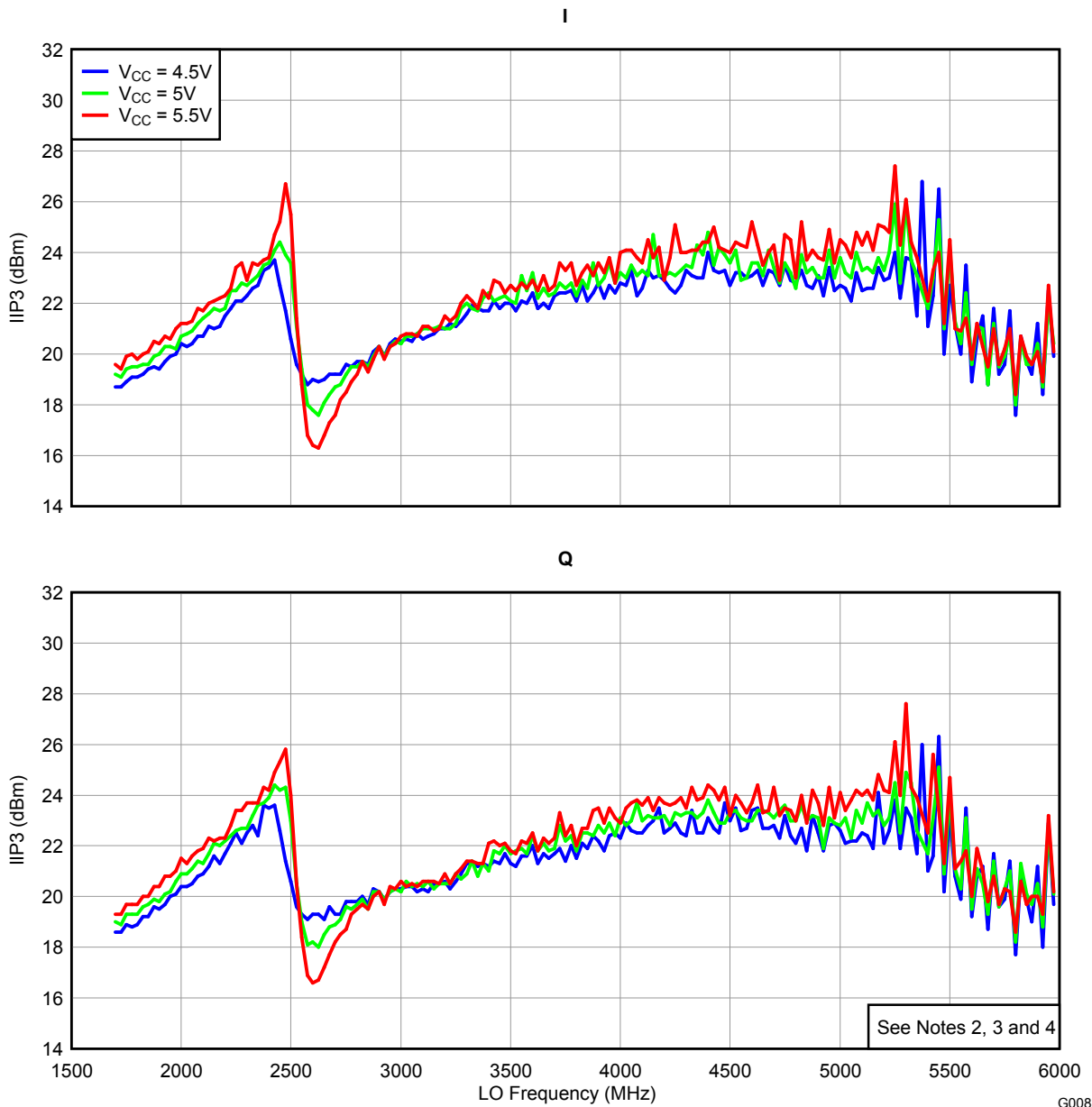


**Figure 8.**

**TYPICAL CHARACTERISTICS, BROADBAND DATA (1700 MHz–6000 MHz) (continued)**

$V_{CC} = 5\text{ V}$ , LO power = 0 dBm,  $T_A = 25^\circ\text{C}$  (unless otherwise noted)

**IIP3 vs LO FREQUENCY**



**Figure 9.**

TYPICAL CHARACTERISTICS, BROADBAND DATA (1700 MHz–6000 MHz) (continued)

V<sub>CC</sub> = 5 V, LO power = 0 dBm, T<sub>A</sub> = 25°C (unless otherwise noted)

IIP3 vs LO FREQUENCY

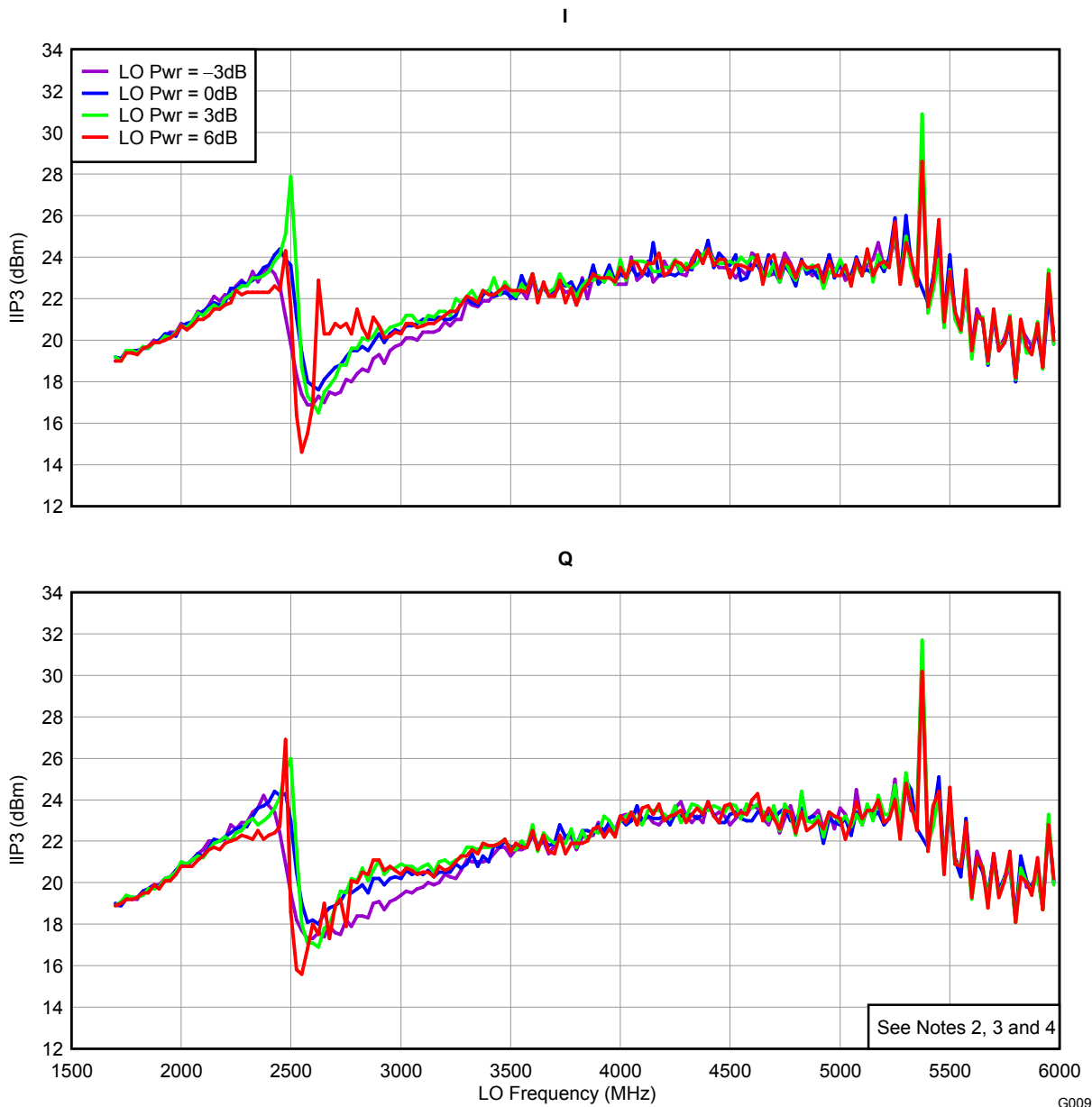
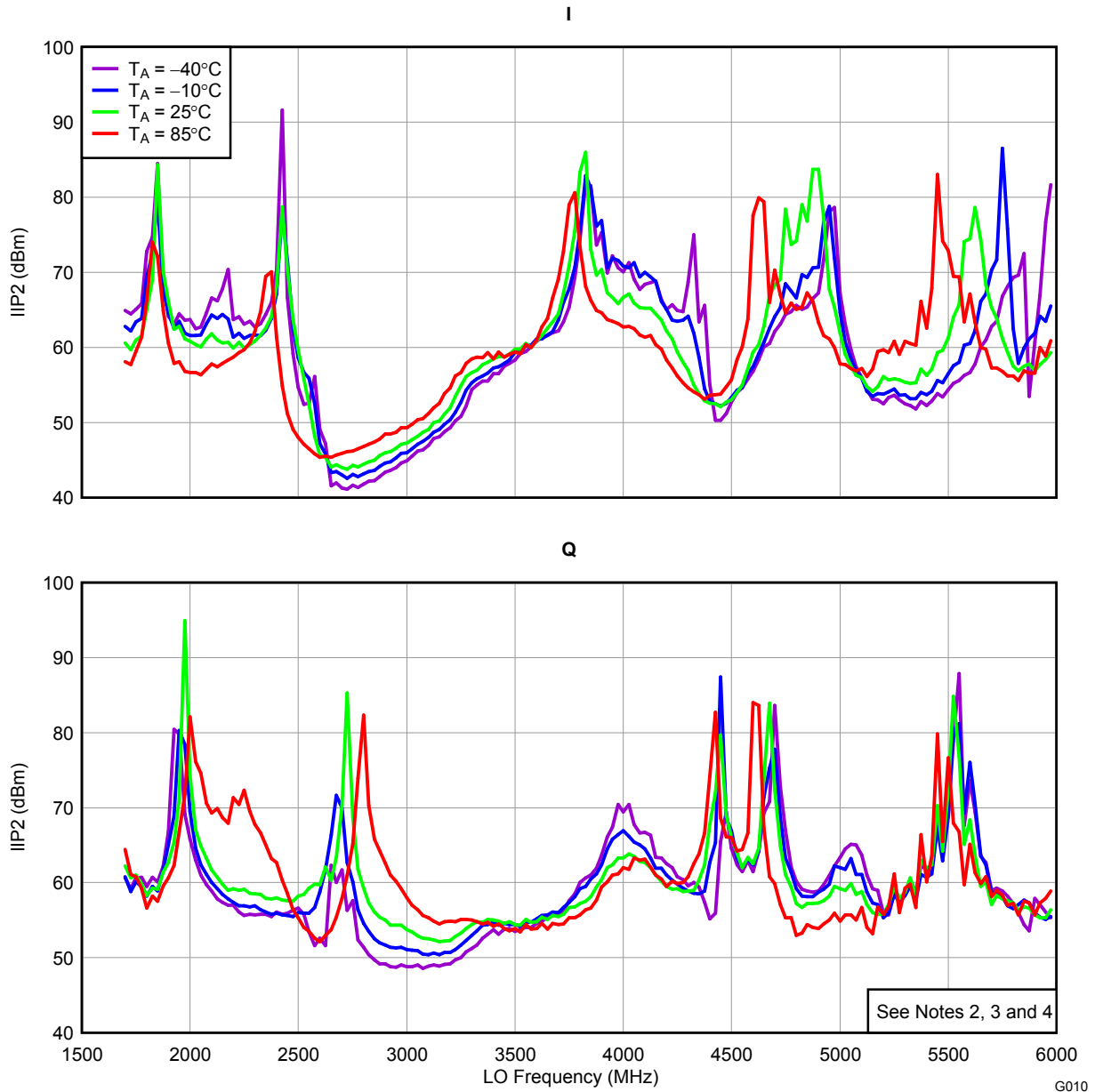


Figure 10.

**TYPICAL CHARACTERISTICS, BROADBAND DATA (1700 MHz–6000 MHz) (continued)**

V<sub>CC</sub> = 5 V, LO power = 0 dBm, T<sub>A</sub> = 25°C (unless otherwise noted)

**IIP2 vs LO FREQUENCY**

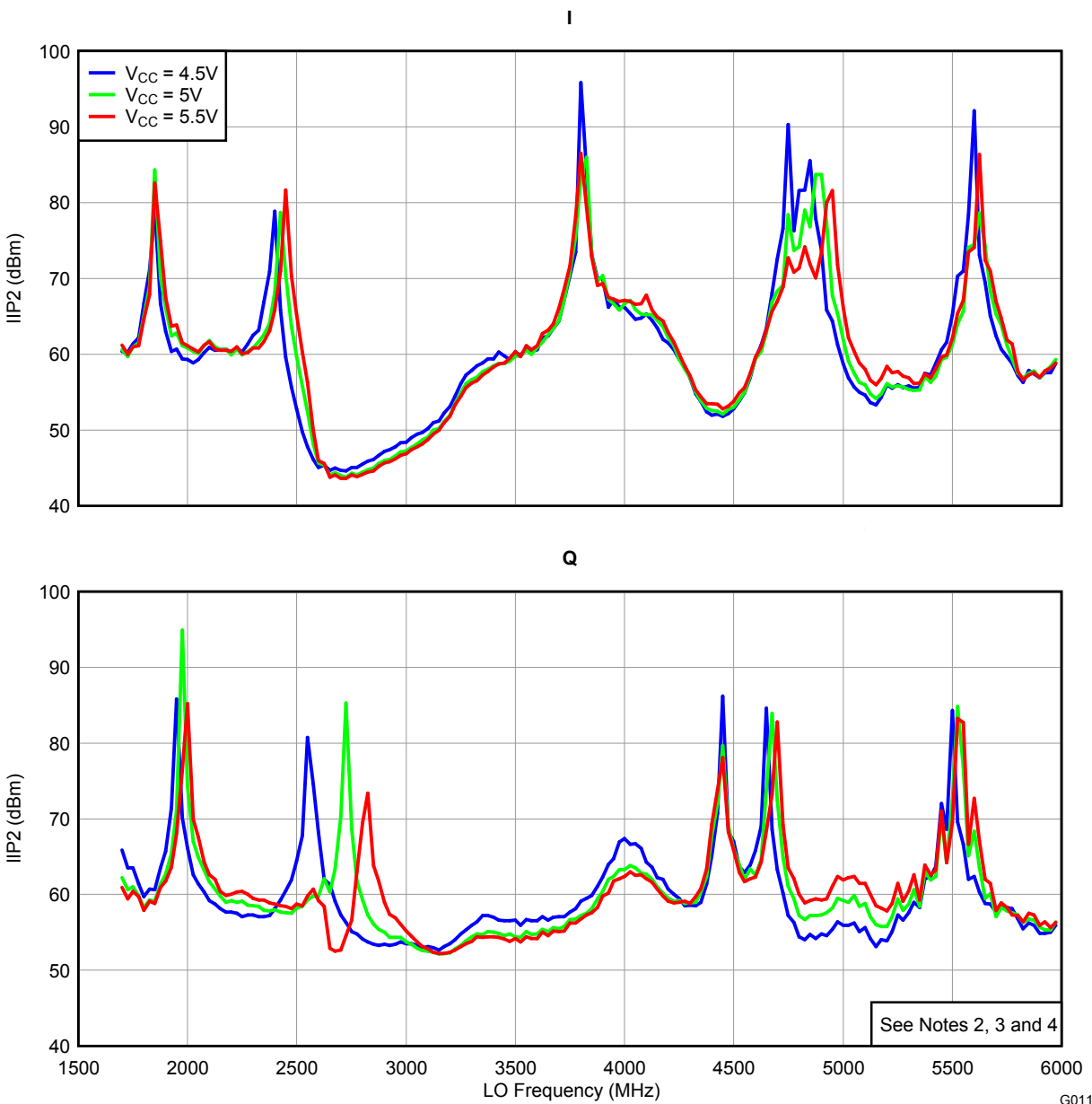


**Figure 11.**

**TYPICAL CHARACTERISTICS, BROADBAND DATA (1700 MHz–6000 MHz) (continued)**

$V_{CC} = 5\text{ V}$ , LO power = 0 dBm,  $T_A = 25^\circ\text{C}$  (unless otherwise noted)

**IIP2 vs LO FREQUENCY**

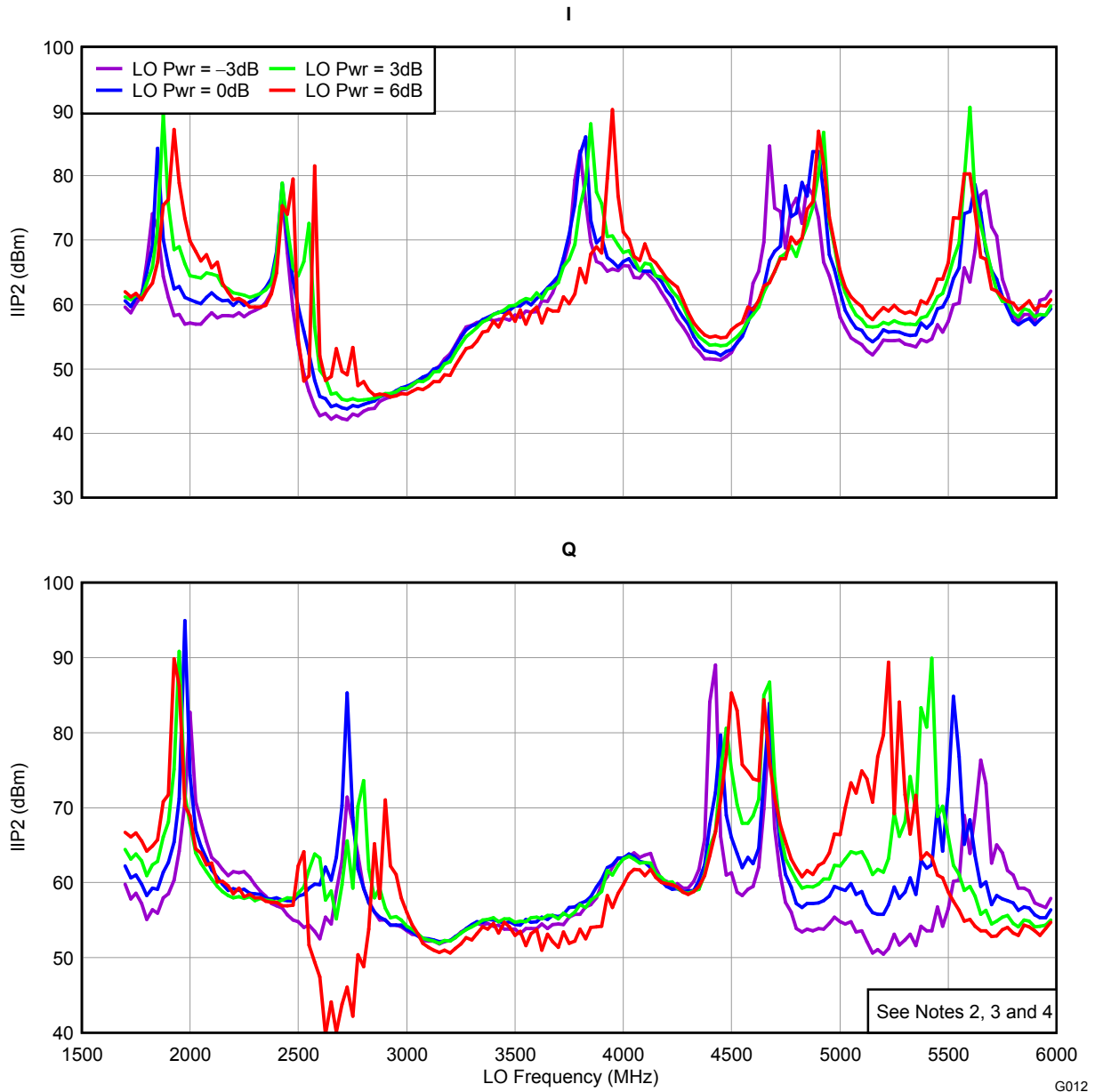


**Figure 12.**

**TYPICAL CHARACTERISTICS, BROADBAND DATA (1700 MHz–6000 MHz) (continued)**

$V_{CC} = 5\text{ V}$ , LO power = 0 dBm,  $T_A = 25^\circ\text{C}$  (unless otherwise noted)

**IIP2 vs LO FREQUENCY**



**Figure 13.**



**TYPICAL CHARACTERISTICS, 3.5G BAND DATA (3300 MHz–3800 MHz)**

$V_{CC} = 5\text{ V}$ , LO power = 0 dBm,  $T_A = 25^\circ\text{C}$ , balun = Johanson 3600BL14M050E (unless otherwise noted)

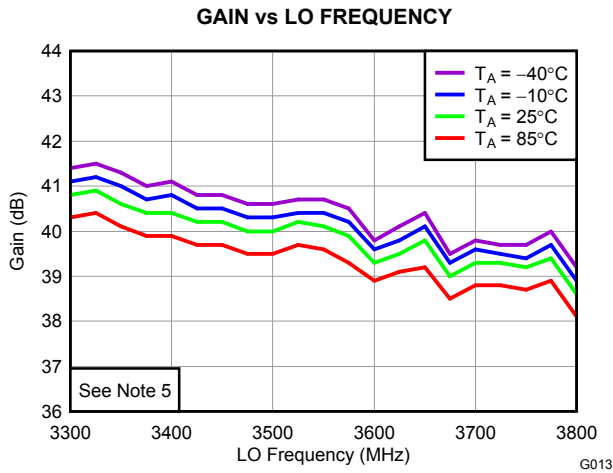


Figure 14.

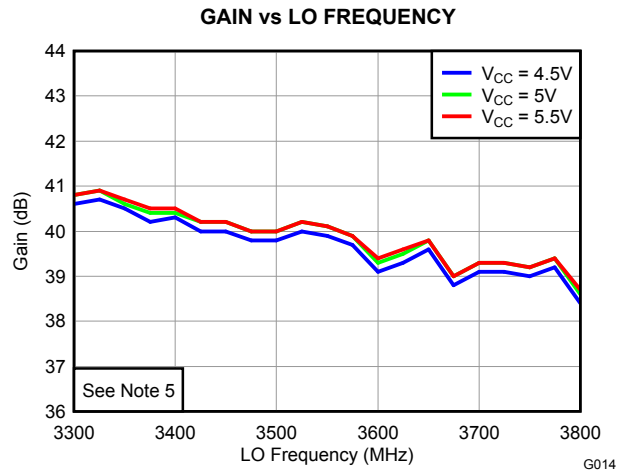


Figure 15.

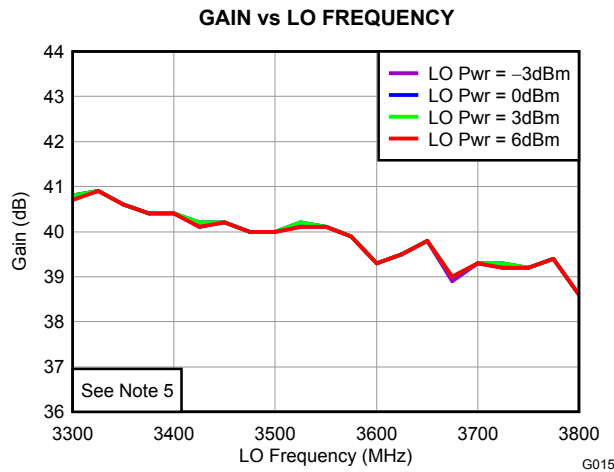
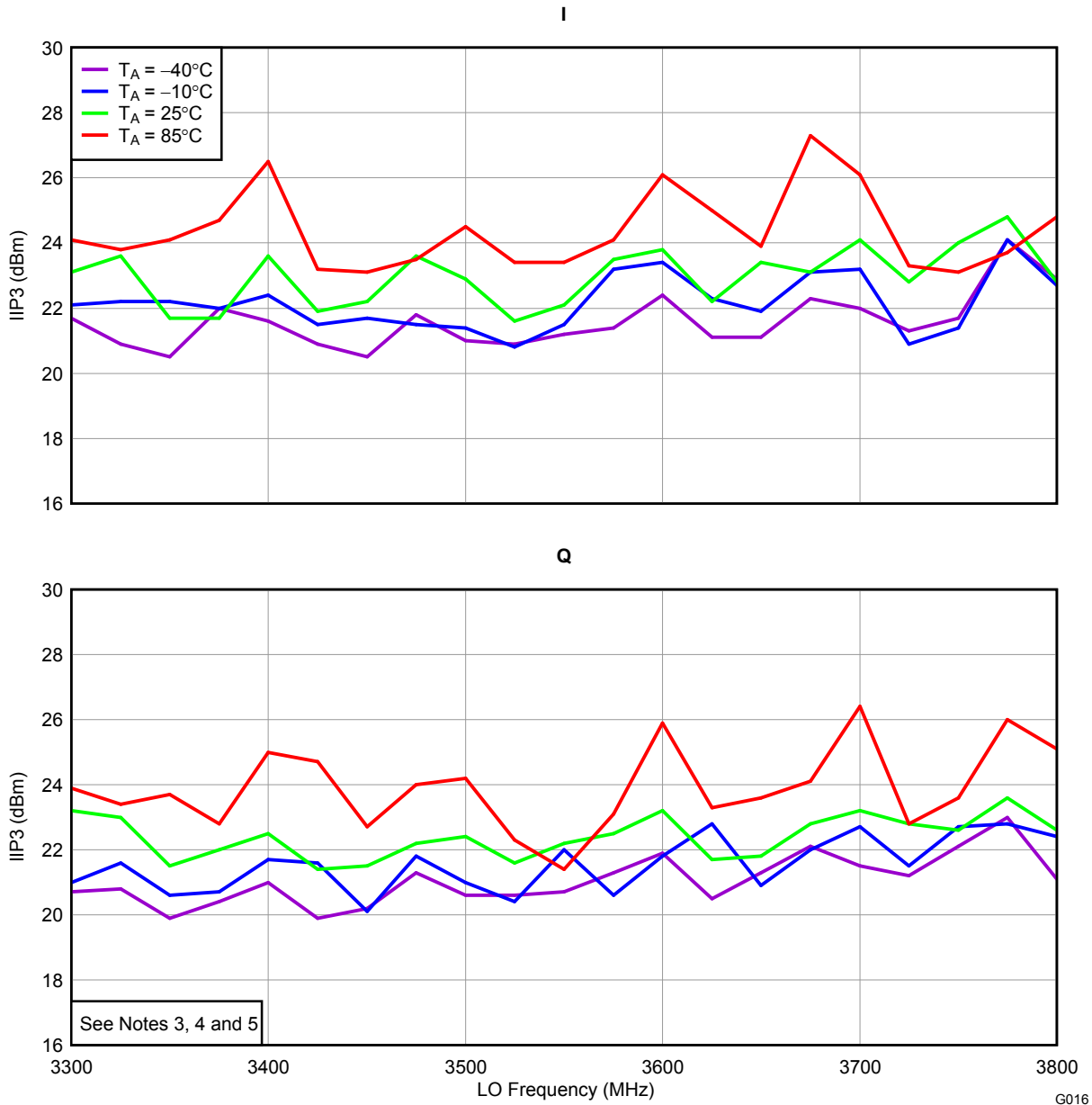


Figure 16.

**TYPICAL CHARACTERISTICS, 3.5G BAND DATA (3300 MHz–3800 MHz) (continued)**

$V_{CC} = 5\text{ V}$ , LO power = 0 dBm,  $T_A = 25^\circ\text{C}$ , balun = Johanson 3600BL14M050E (unless otherwise noted)

**IIP3 vs LO FREQUENCY**

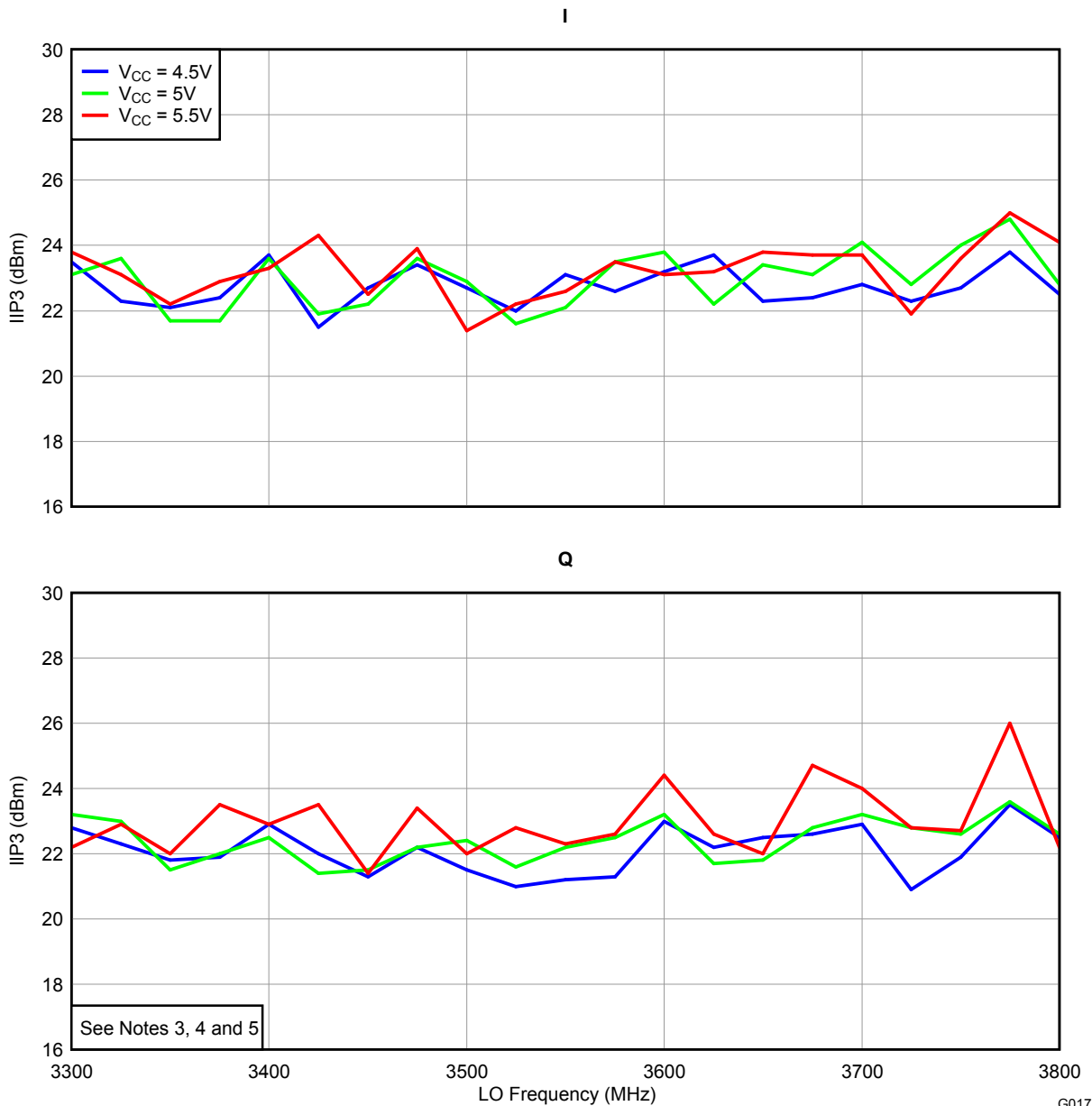


**Figure 17.**

**TYPICAL CHARACTERISTICS, 3.5G BAND DATA (3300 MHz–3800 MHz) (continued)**

$V_{CC} = 5\text{ V}$ , LO power = 0 dBm,  $T_A = 25^\circ\text{C}$ , balun = Johanson 3600BL14M050E (unless otherwise noted)

**IIP3 vs LO FREQUENCY**



**Figure 18.**

### TYPICAL CHARACTERISTICS, 3.5G BAND DATA (3300 MHz–3800 MHz) (continued)

V<sub>CC</sub> = 5 V, LO power = 0 dBm, T<sub>A</sub> = 25°C, balun = Johanson 3600BL14M050E (unless otherwise noted)

IIP3 vs LO FREQUENCY

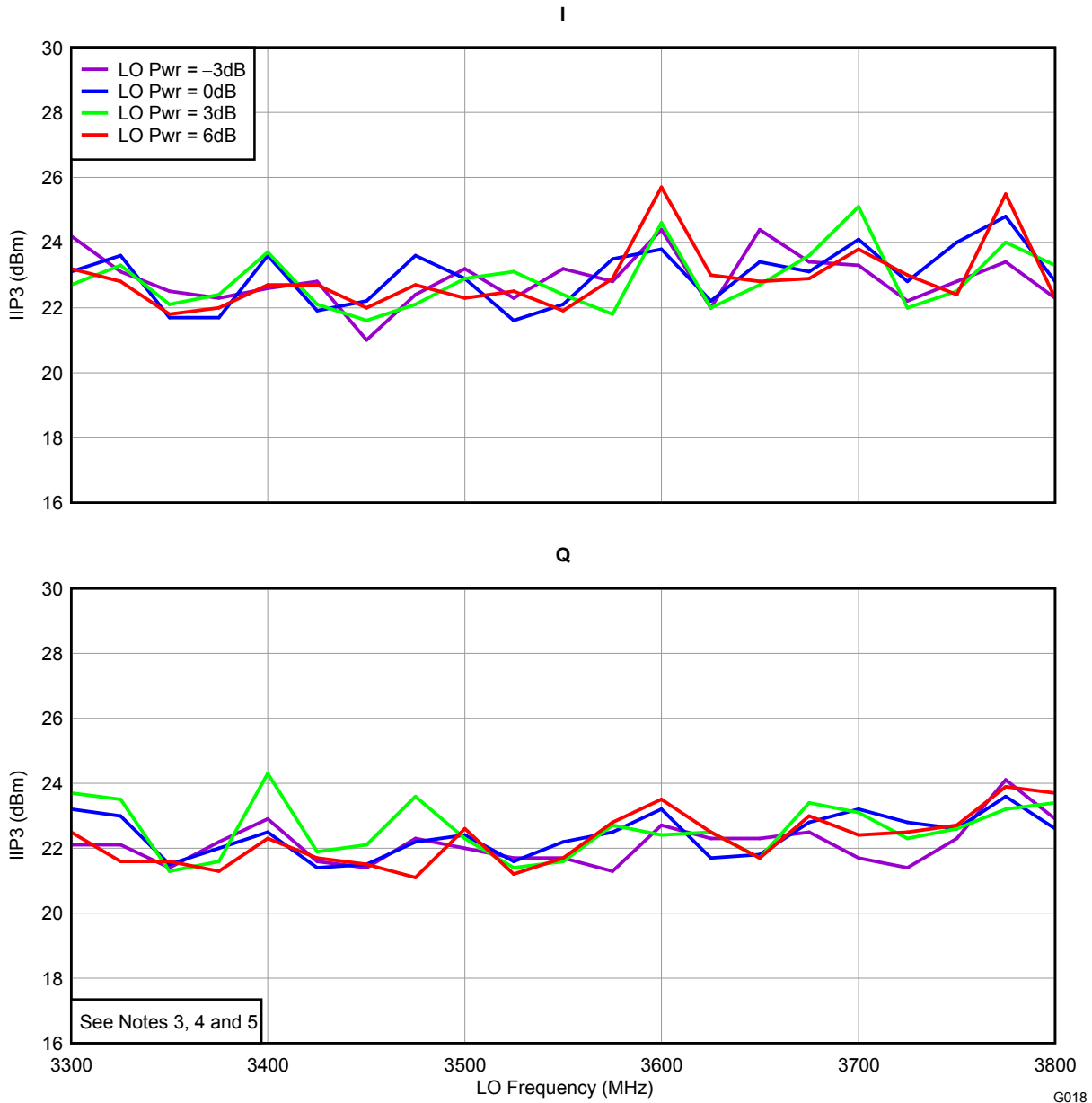
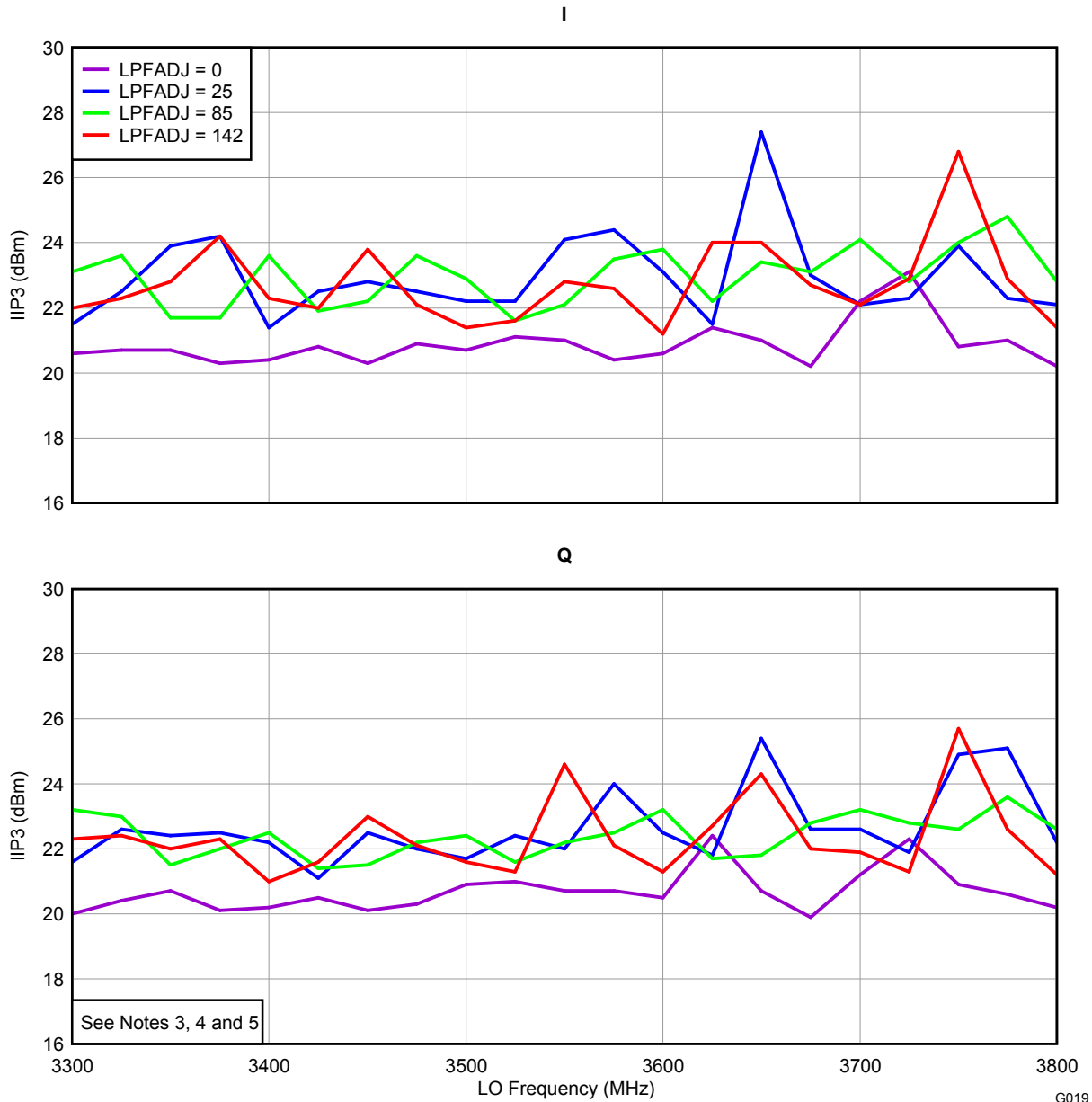


Figure 19.

**TYPICAL CHARACTERISTICS, 3.5G BAND DATA (3300 MHz–3800 MHz) (continued)**

$V_{CC} = 5\text{ V}$ , LO power = 0 dBm,  $T_A = 25^\circ\text{C}$ , balun = Johanson 3600BL14M050E (unless otherwise noted)

**IIP3 vs LO FREQUENCY**

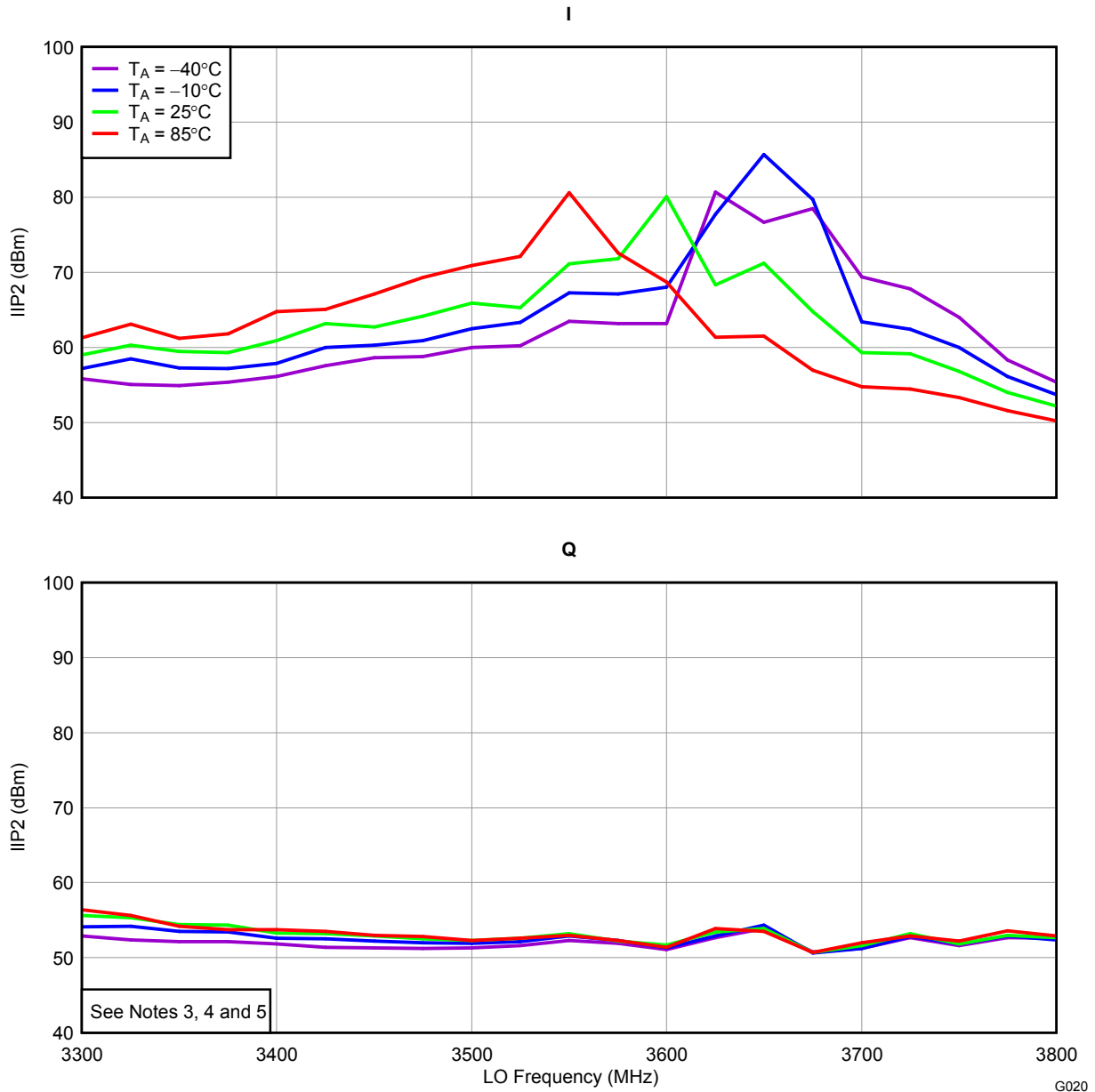


**Figure 20.**

**TYPICAL CHARACTERISTICS, 3.5G BAND DATA (3300 MHz–3800 MHz) (continued)**

$V_{CC} = 5\text{ V}$ , LO power = 0 dBm,  $T_A = 25^\circ\text{C}$ , balun = Johanson 3600BL14M050E (unless otherwise noted)

**IIP2 vs LO FREQUENCY**

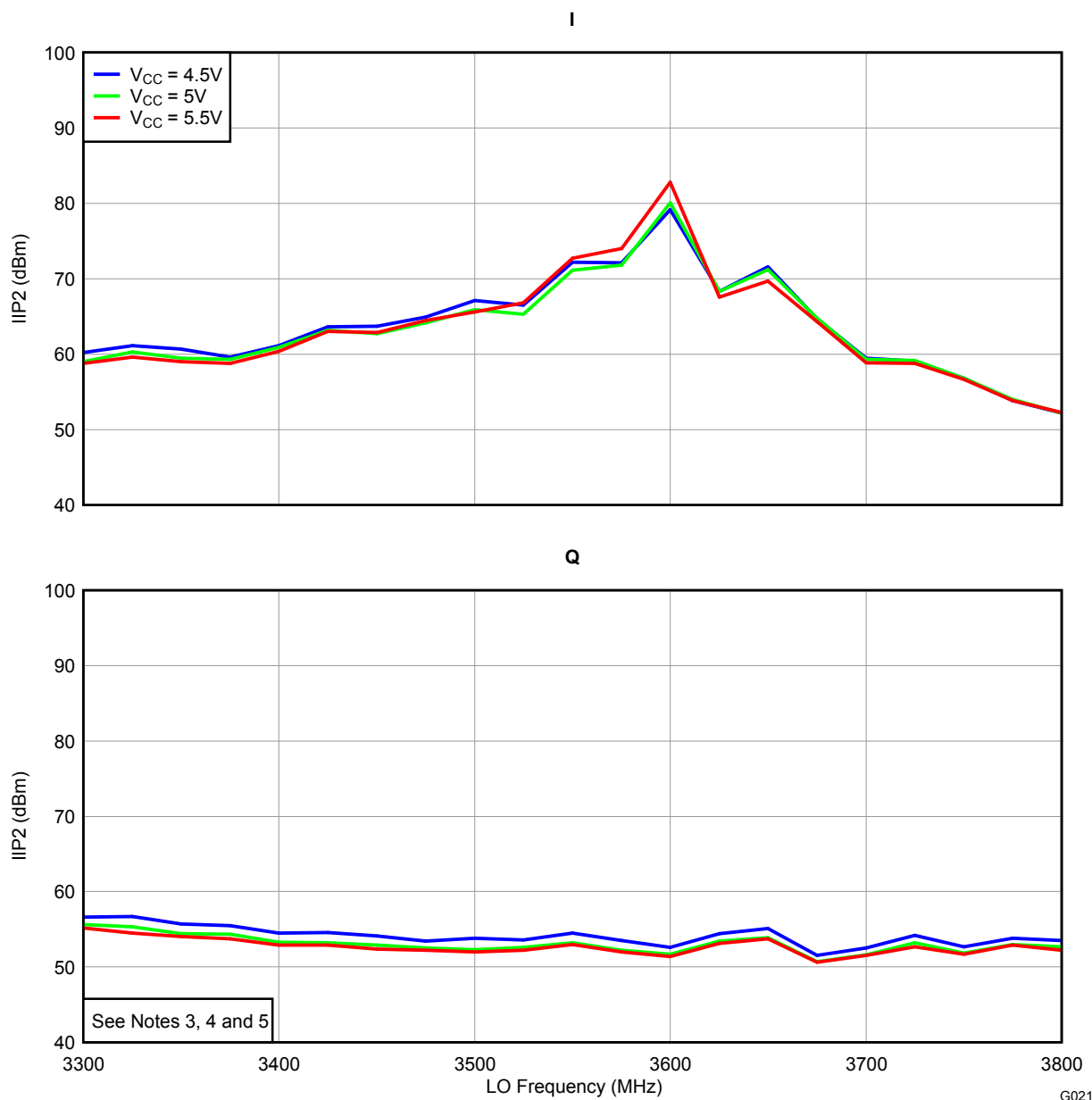


**Figure 21.**

**TYPICAL CHARACTERISTICS, 3.5G BAND DATA (3300 MHz–3800 MHz) (continued)**

$V_{CC} = 5\text{ V}$ , LO power = 0 dBm,  $T_A = 25^\circ\text{C}$ , balun = Johanson 3600BL14M050E (unless otherwise noted)

**IIP2 vs LO FREQUENCY**

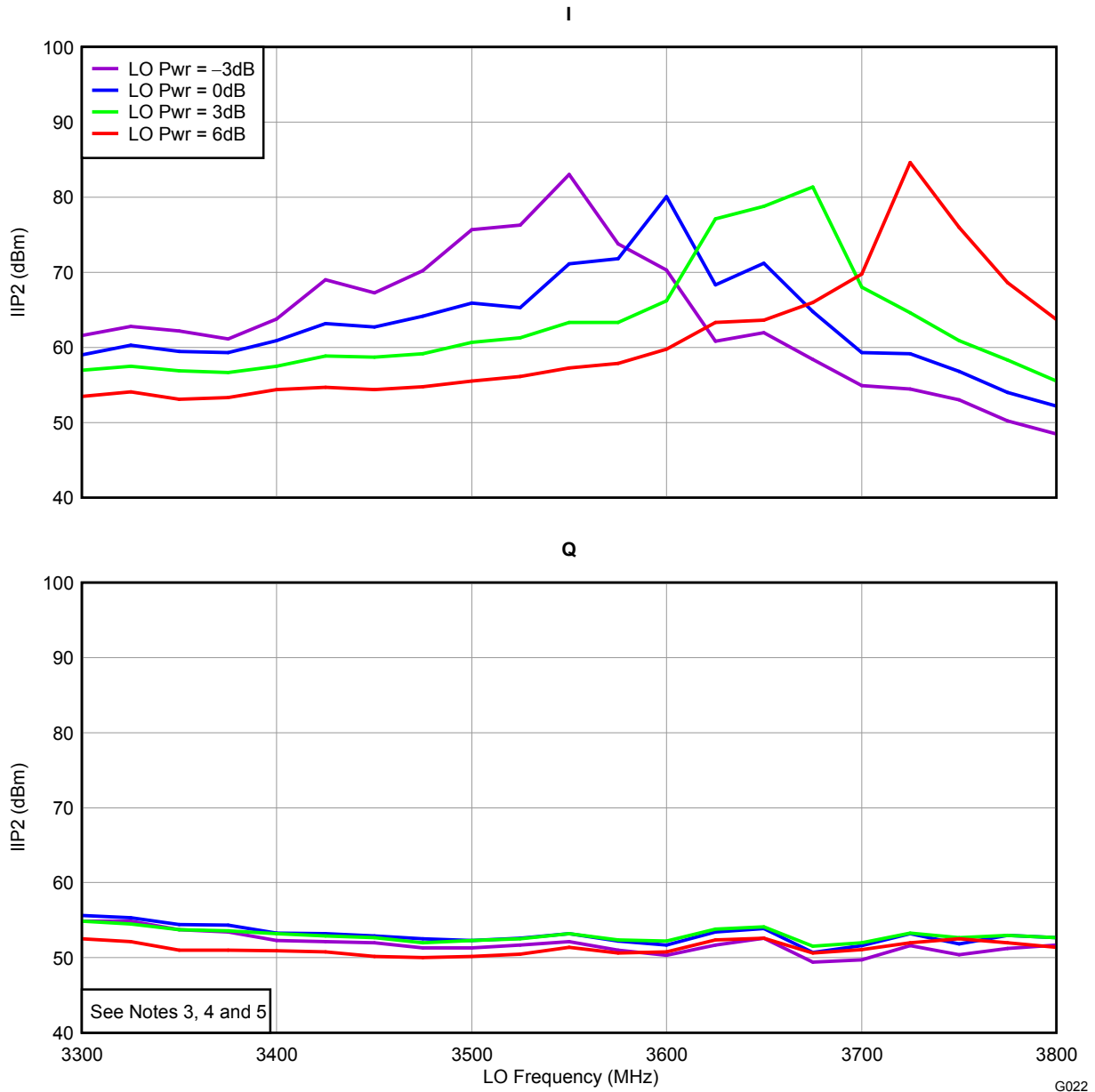


**Figure 22.**

**TYPICAL CHARACTERISTICS, 3.5G BAND DATA (3300 MHz–3800 MHz) (continued)**

$V_{CC} = 5\text{ V}$ , LO power = 0 dBm,  $T_A = 25^\circ\text{C}$ , balun = Johanson 3600BL14M050E (unless otherwise noted)

**IIP2 vs LO FREQUENCY**



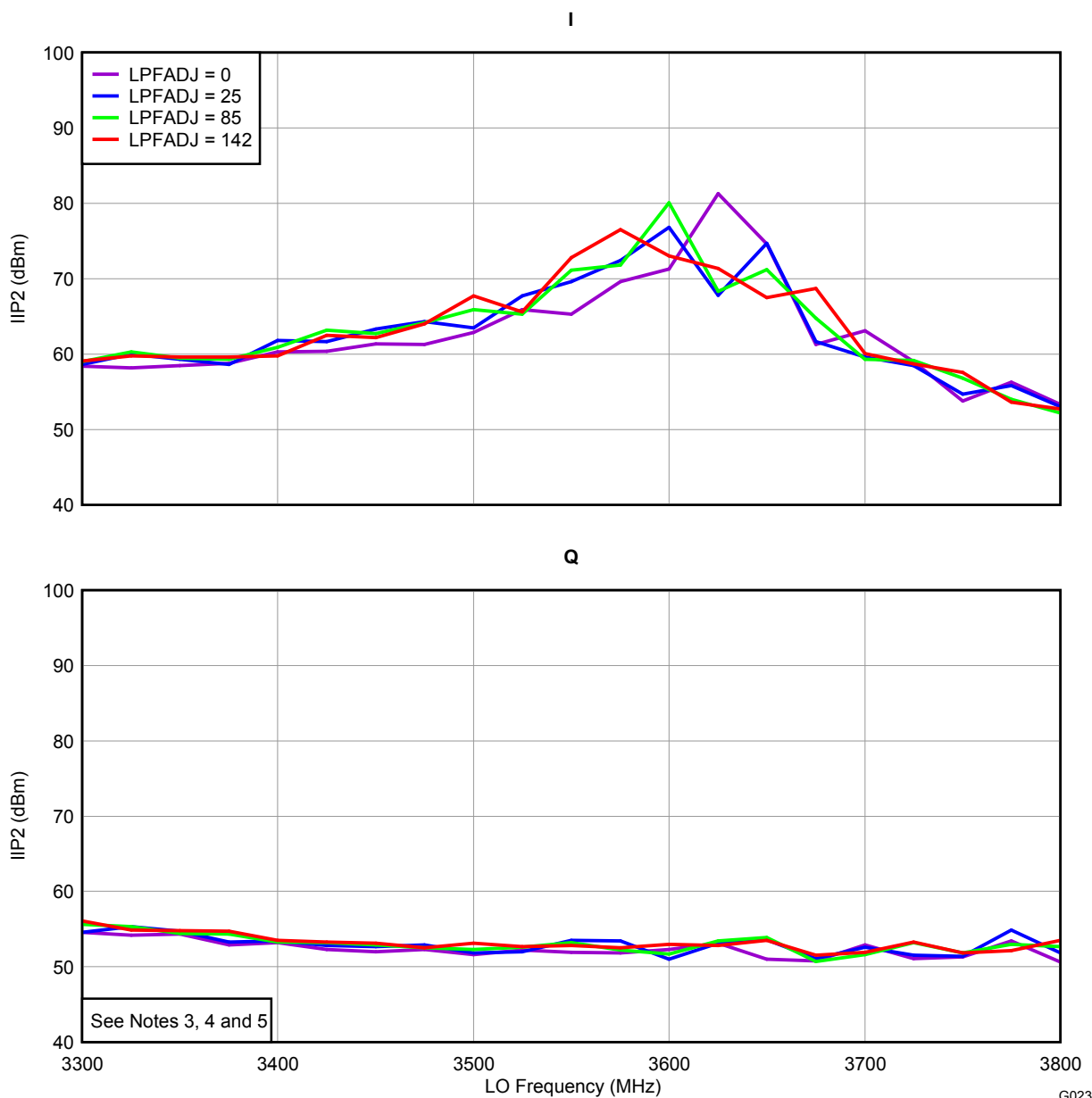
**Figure 23.**



**TYPICAL CHARACTERISTICS, 3.5G BAND DATA (3300 MHz–3800 MHz) (continued)**

$V_{CC} = 5\text{ V}$ , LO power = 0 dBm,  $T_A = 25^\circ\text{C}$ , balun = Johanson 3600BL14M050E (unless otherwise noted)

**IIP2 vs LO FREQUENCY**



**Figure 24.**

**TYPICAL CHARACTERISTICS, 3.5G BAND DATA (3300 MHz–3800 MHz) (continued)**

$V_{CC} = 5\text{ V}$ , LO power = 0 dBm,  $T_A = 25^\circ\text{C}$ , balun = Johanson 3600BL14M050E (unless otherwise noted)

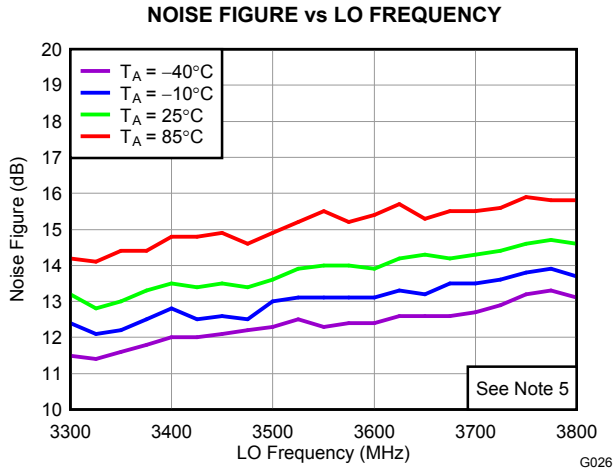


Figure 25.

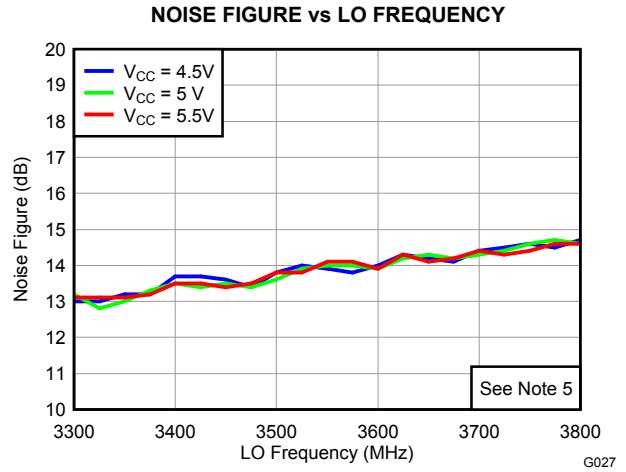


Figure 26.

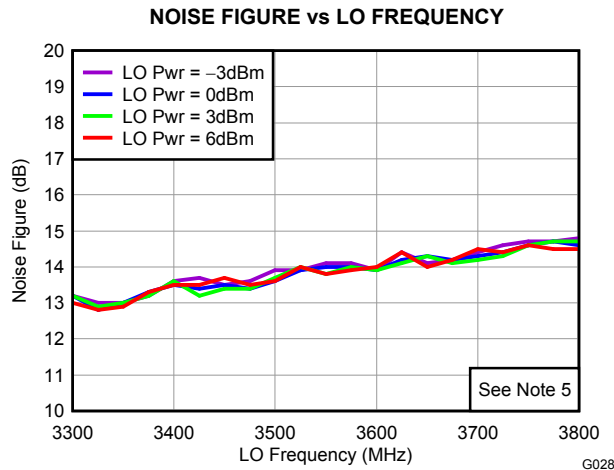


Figure 27.

**TYPICAL CHARACTERISTICS, 5G BAND DATA (4900 MHz–5900 MHz)**

$V_{CC} = 5\text{ V}$ , LO power = 0 dBm,  $T_A = 25^\circ\text{C}$ , balun = Johanson 5400BL15B050E (unless otherwise noted)

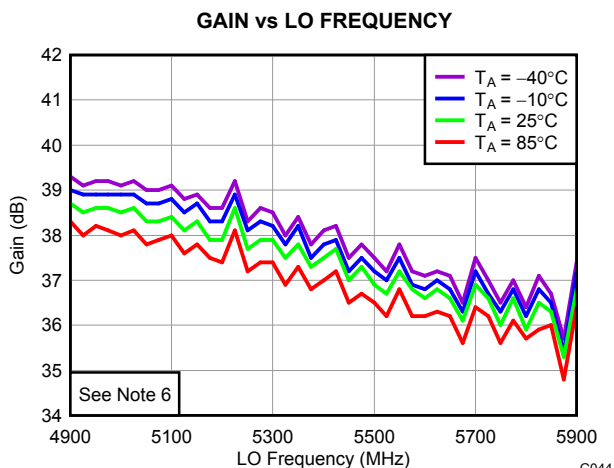


Figure 28.

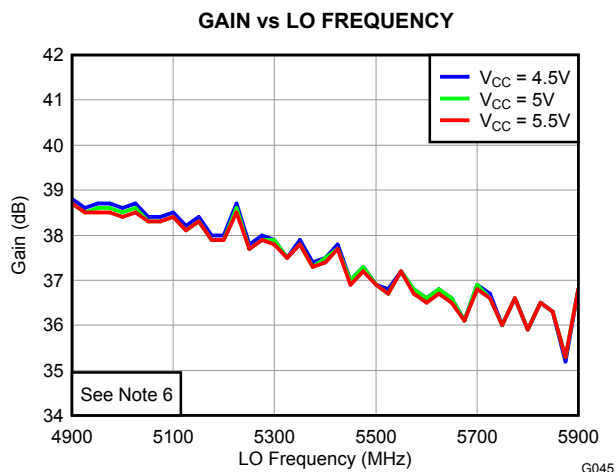


Figure 29.

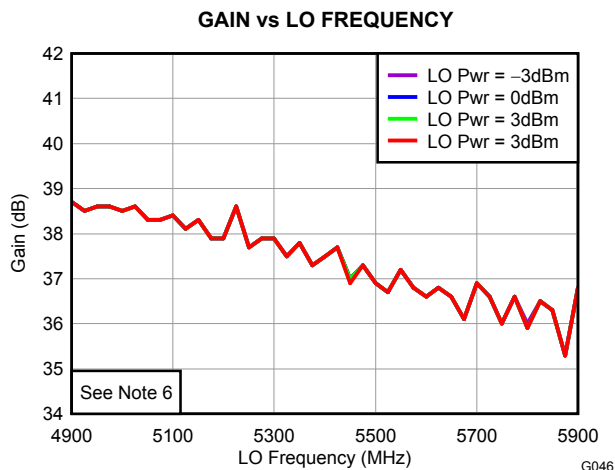
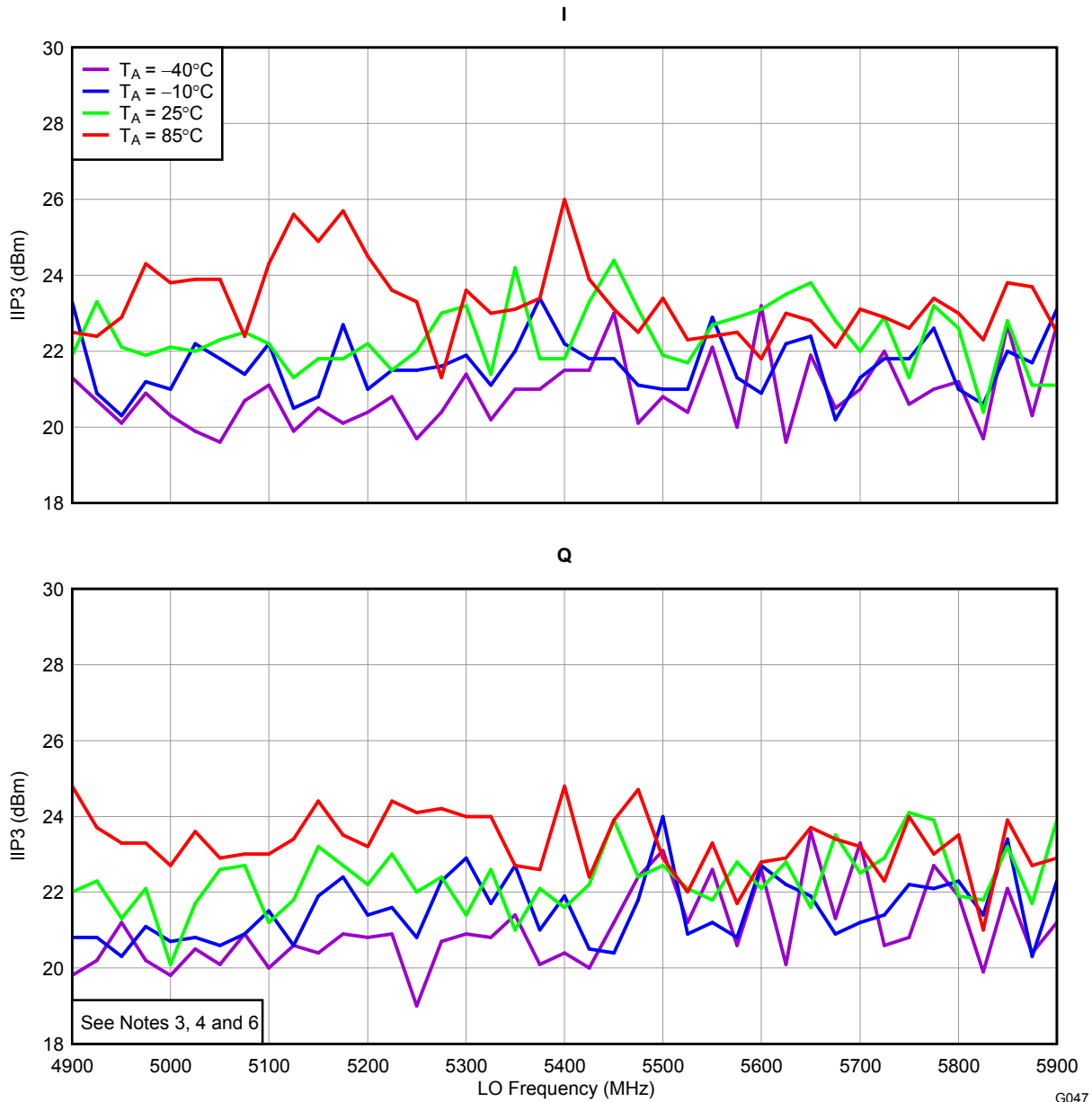


Figure 30.

**TYPICAL CHARACTERISTICS, 5G BAND DATA (4900 MHz–5900 MHz) (continued)**

$V_{CC} = 5\text{ V}$ , LO power = 0 dBm,  $T_A = 25^\circ\text{C}$ , balun = Johanson 5400BL15B050E (unless otherwise noted)

**IIP3 vs LO FREQUENCY**



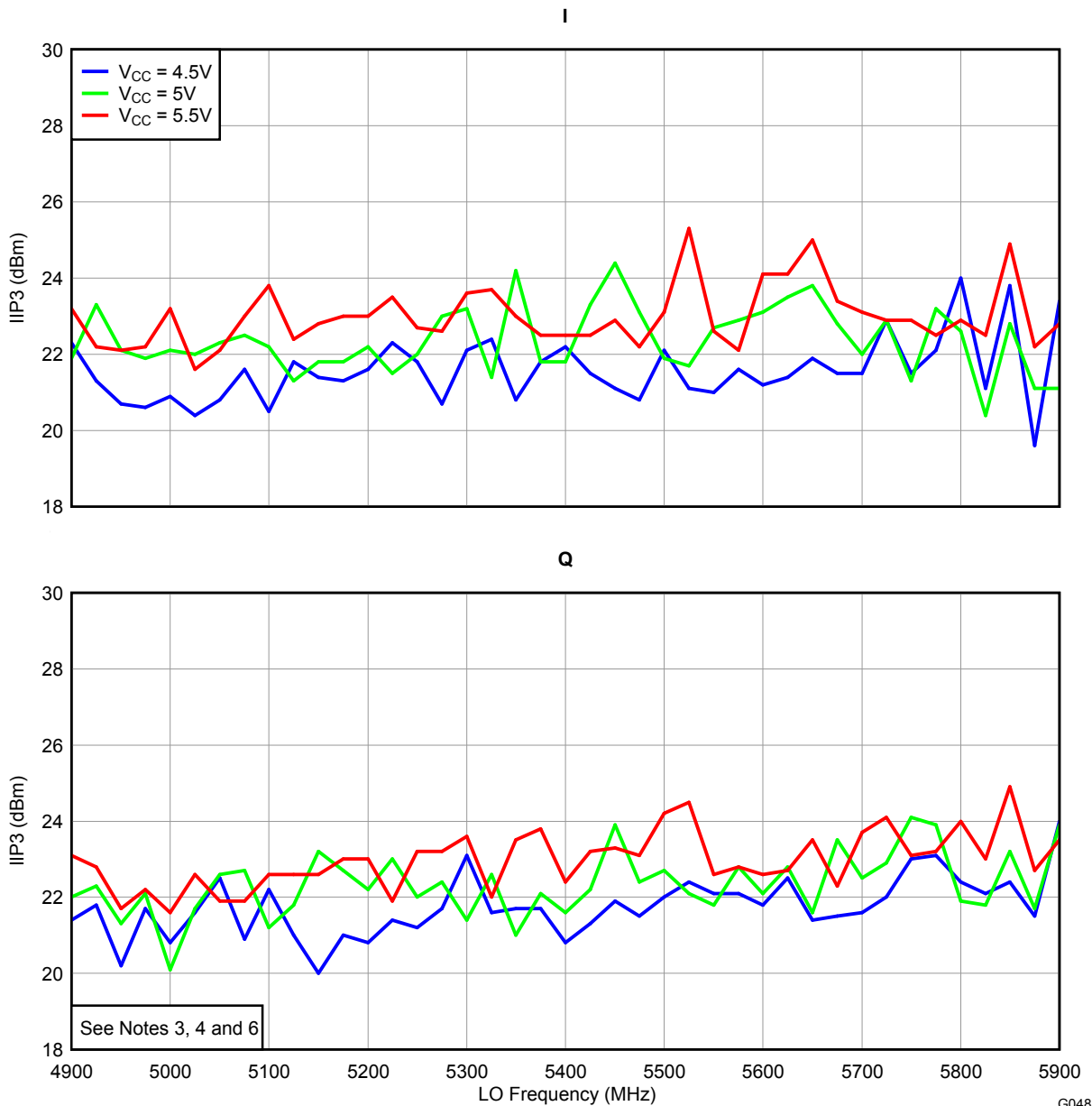
**Figure 31.**

G047

**TYPICAL CHARACTERISTICS, 5G BAND DATA (4900 MHz–5900 MHz) (continued)**

$V_{CC} = 5\text{ V}$ , LO power = 0 dBm,  $T_A = 25^\circ\text{C}$ , balun = Johanson 5400BL15B050E (unless otherwise noted)

**IIP3 vs LO FREQUENCY**



**Figure 32.**

### TYPICAL CHARACTERISTICS, 5G BAND DATA (4900 MHz–5900 MHz) (continued)

V<sub>CC</sub> = 5 V, LO power = 0 dBm, T<sub>A</sub> = 25°C, balun = Johanson 5400BL15B050E (unless otherwise noted)

IIP3 vs LO FREQUENCY

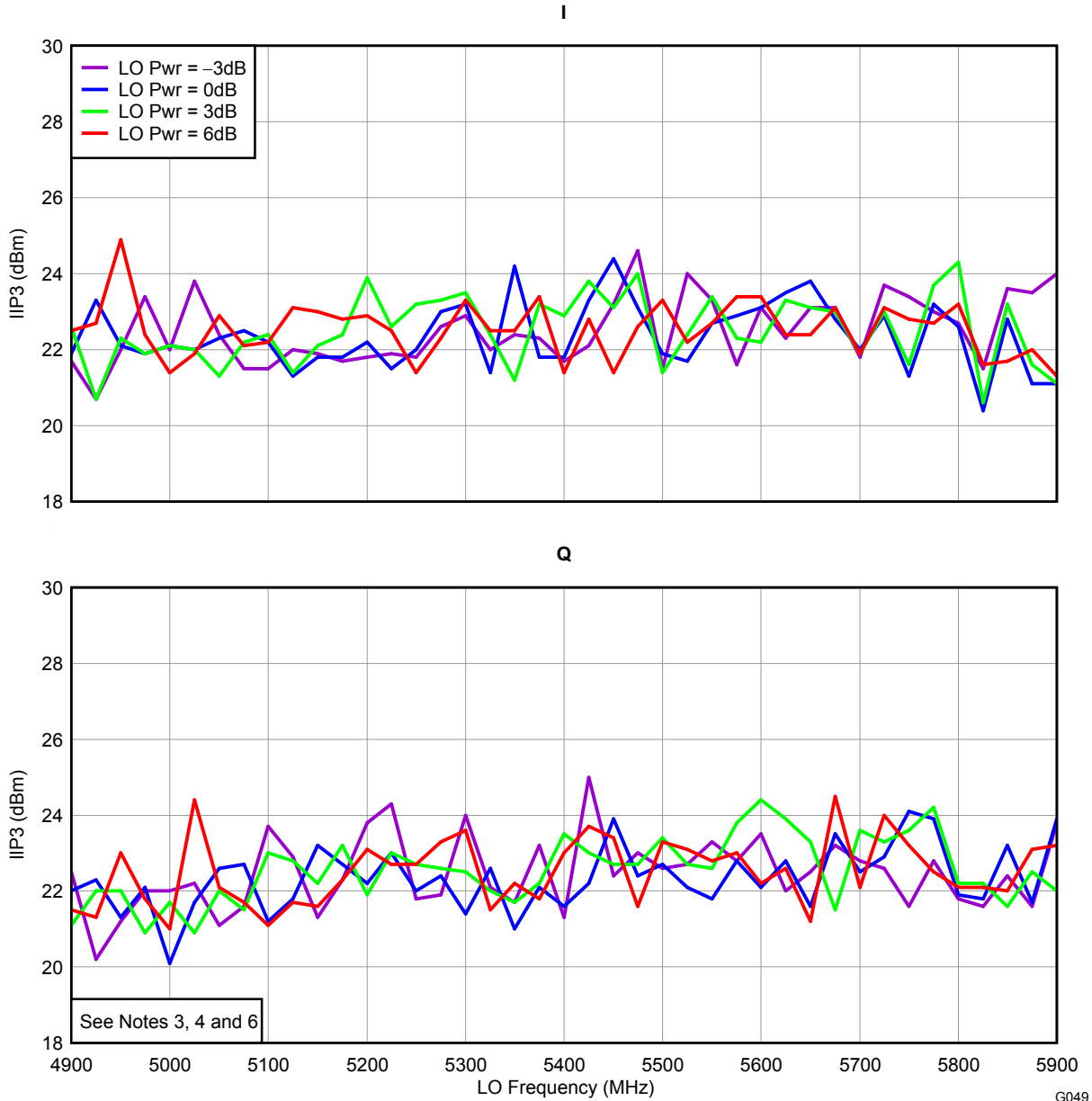
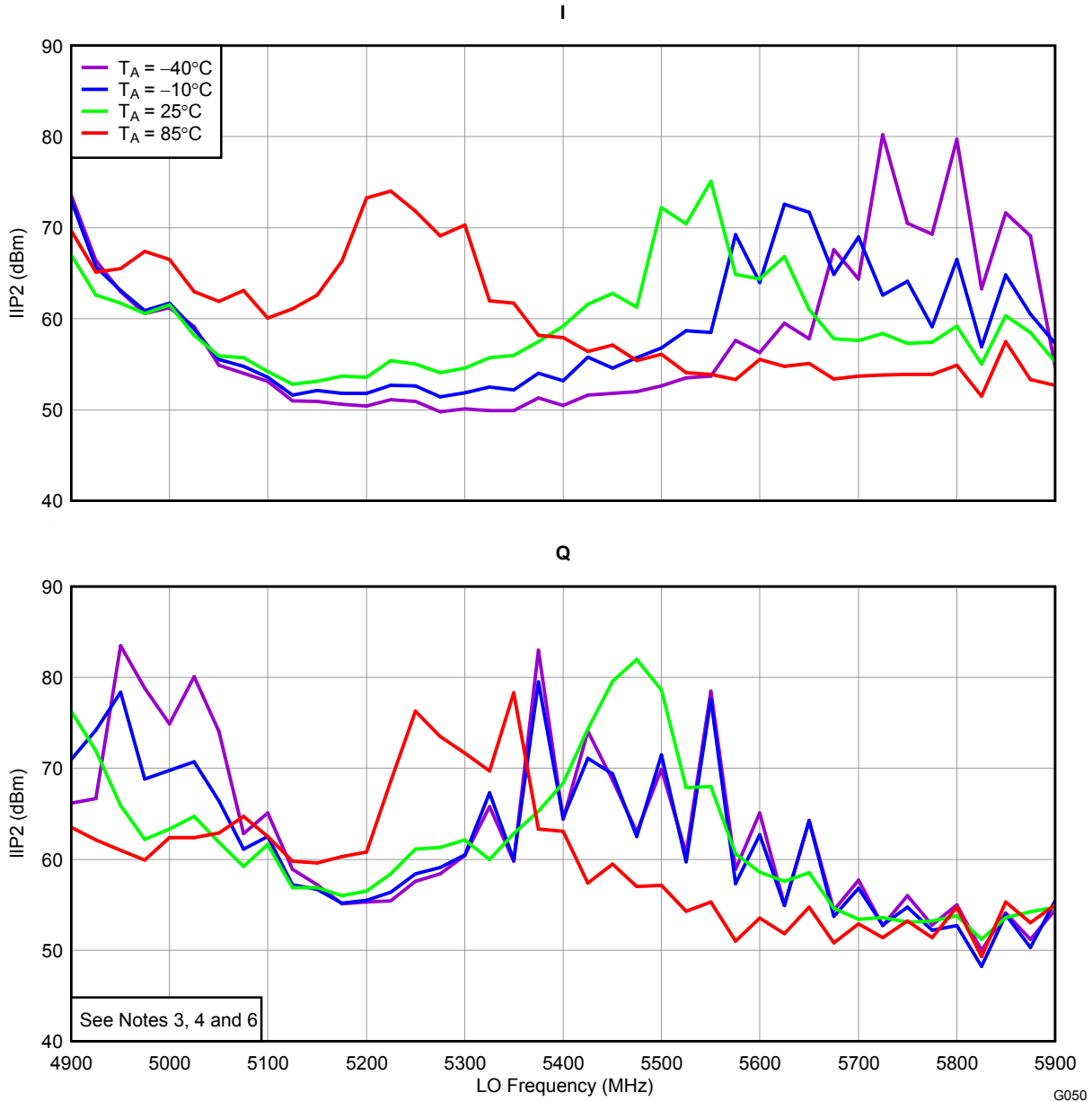


Figure 33.

**TYPICAL CHARACTERISTICS, 5G BAND DATA (4900 MHz–5900 MHz) (continued)**

$V_{CC} = 5\text{ V}$ , LO power = 0 dBm,  $T_A = 25^\circ\text{C}$ , balun = Johanson 5400BL15B050E (unless otherwise noted)

**IIP2 vs LO FREQUENCY**

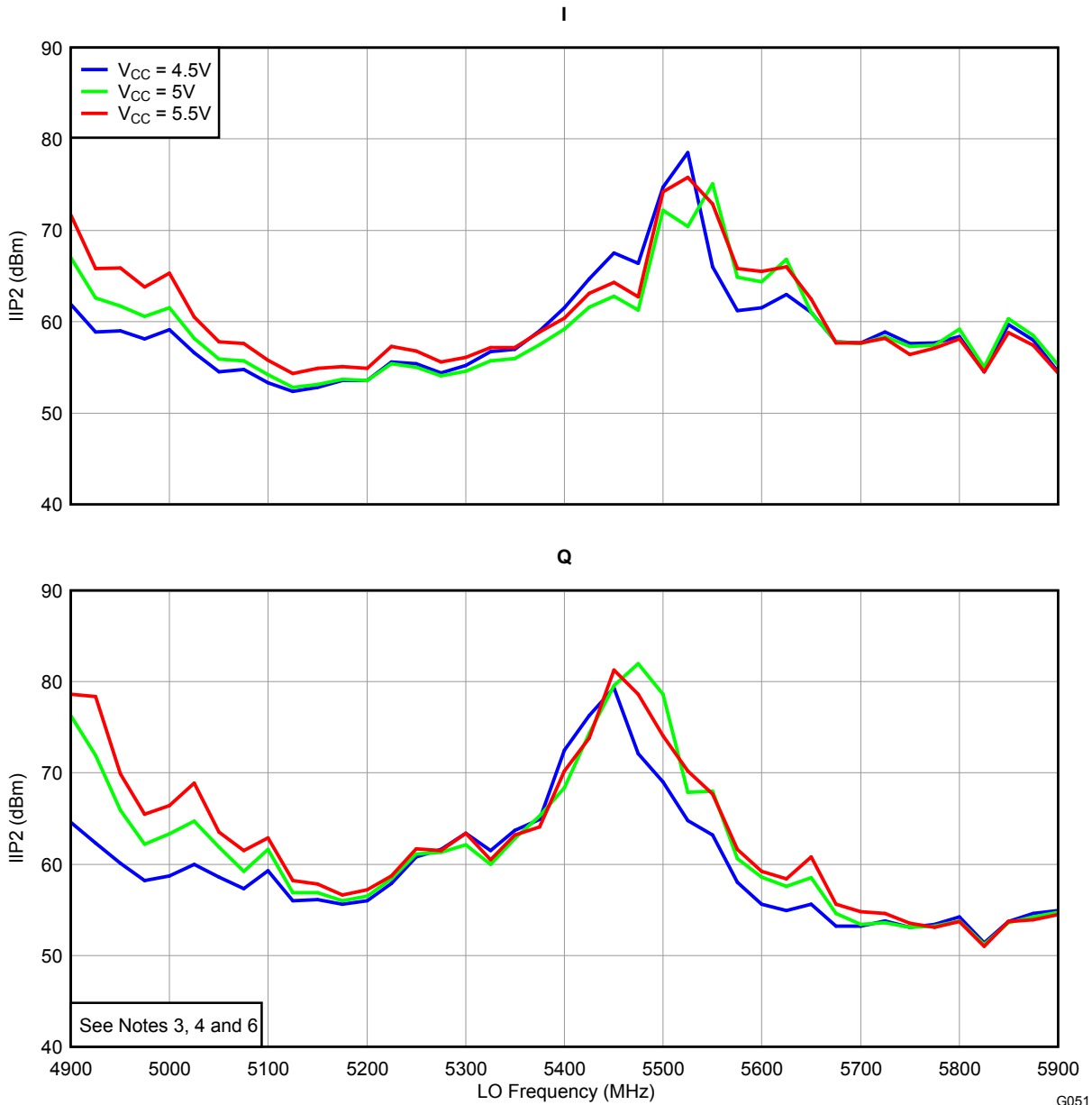


**Figure 34.**

**TYPICAL CHARACTERISTICS, 5G BAND DATA (4900 MHz–5900 MHz) (continued)**

$V_{CC} = 5\text{ V}$ , LO power = 0 dBm,  $T_A = 25^\circ\text{C}$ , balun = Johanson 5400BL15B050E (unless otherwise noted)

**IIP2 vs LO FREQUENCY**



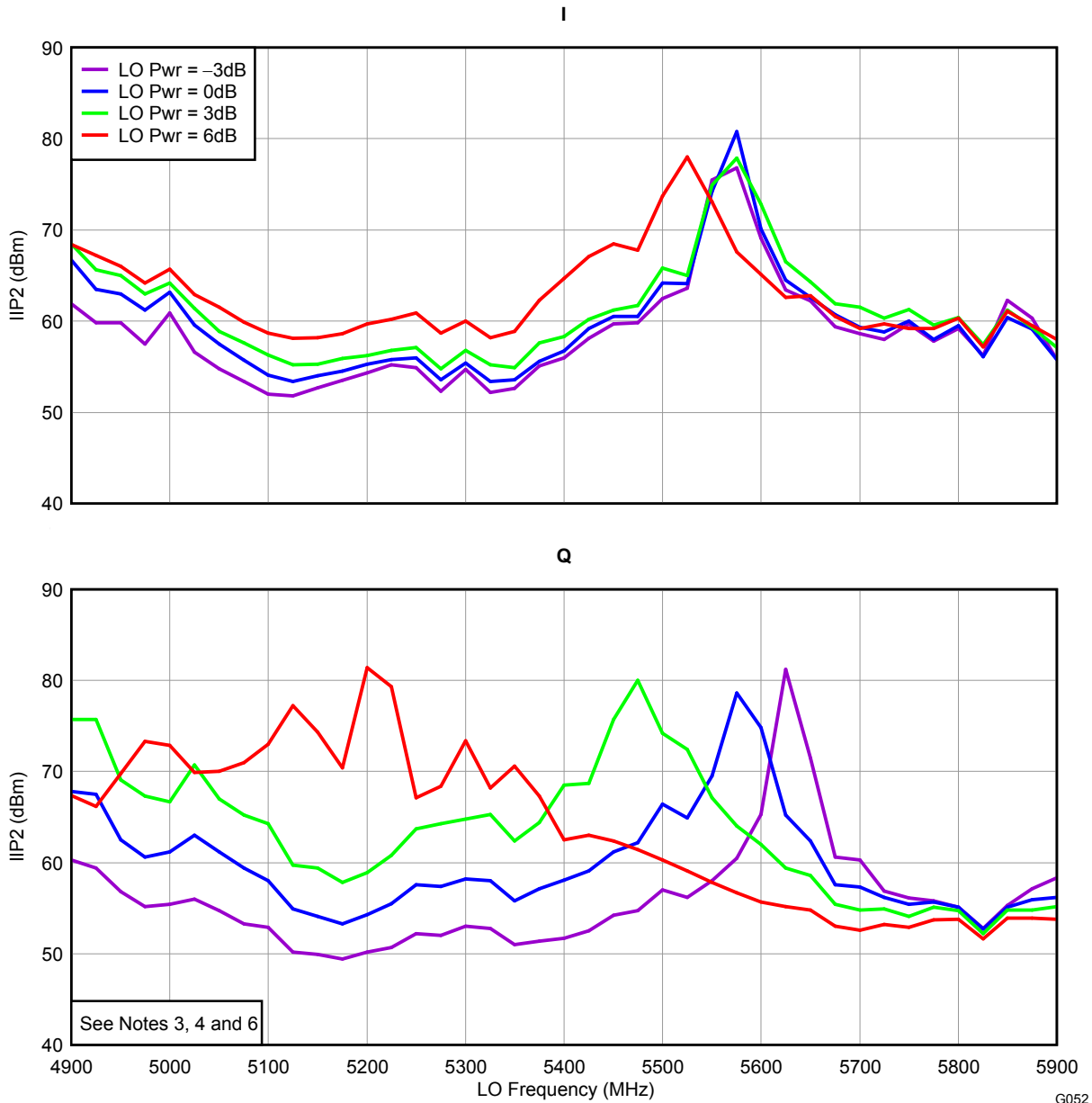
**Figure 35.**



**TYPICAL CHARACTERISTICS, 5G BAND DATA (4900 MHz–5900 MHz) (continued)**

$V_{CC} = 5\text{ V}$ , LO power = 0 dBm,  $T_A = 25^\circ\text{C}$ , balun = Johanson 5400BL15B050E (unless otherwise noted)

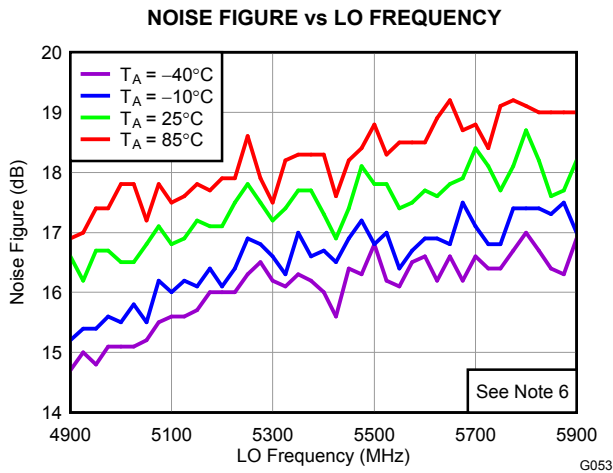
**IIP2 vs LO FREQUENCY**



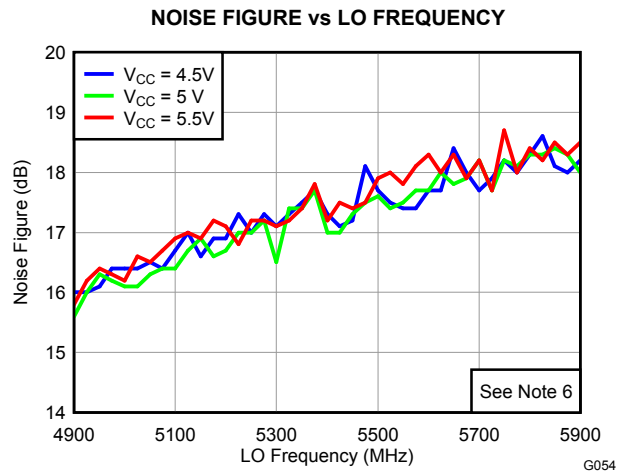
**Figure 36.**

**TYPICAL CHARACTERISTICS, 5G BAND DATA (4900 MHz–5900 MHz) (continued)**

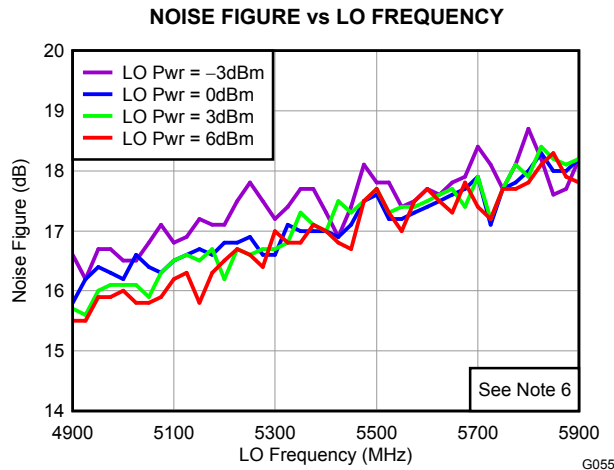
$V_{CC} = 5\text{ V}$ , LO power = 0 dBm,  $T_A = 25^\circ\text{C}$ , balun = Johanson 5400BL15B050E (unless otherwise noted)



**Figure 37.**



**Figure 38.**



**Figure 39.**

**TYPICAL CHARACTERISTICS, BASEBAND-RELATED DATA**

$V_{CC} = 5\text{ V}$ , LO power = 0 dBm,  $T_A = 25^\circ\text{C}$ , independent of balun used (unless otherwise noted)

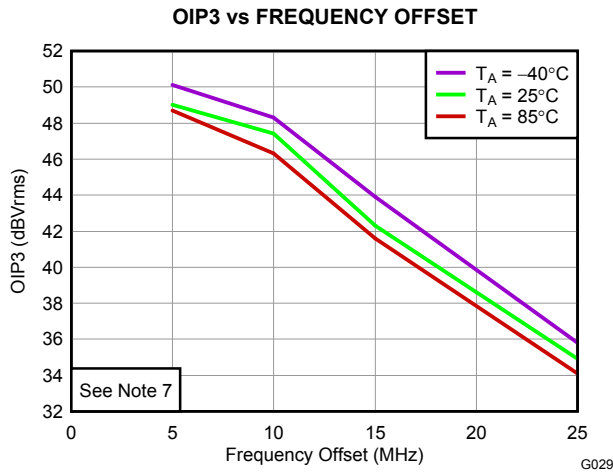


Figure 40.

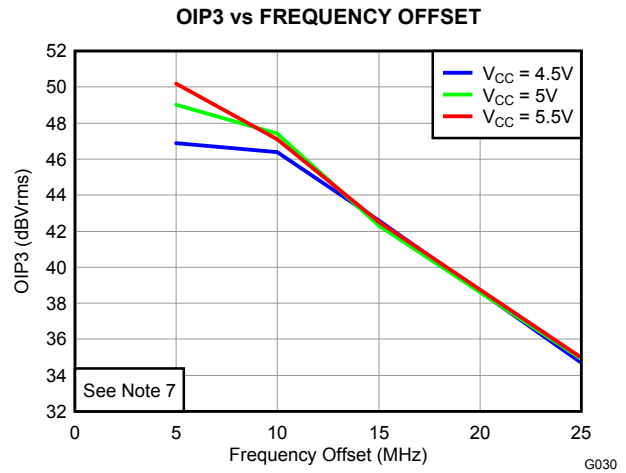


Figure 41.

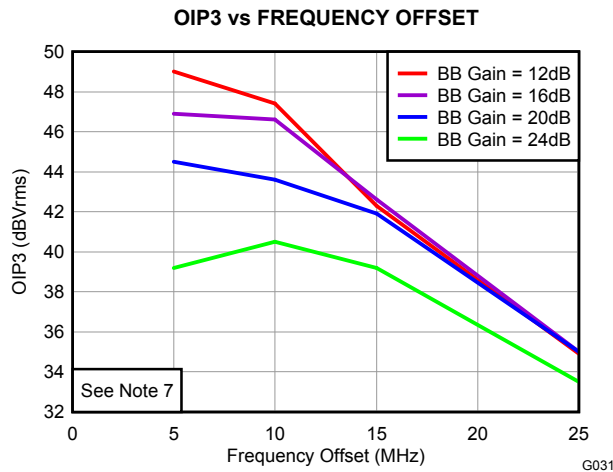


Figure 42.

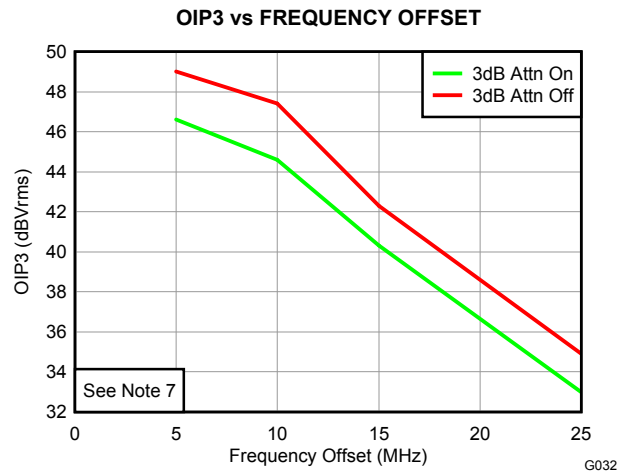


Figure 43.

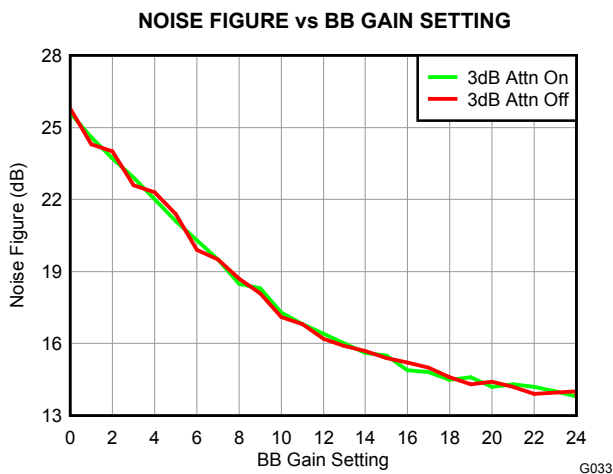


Figure 44.

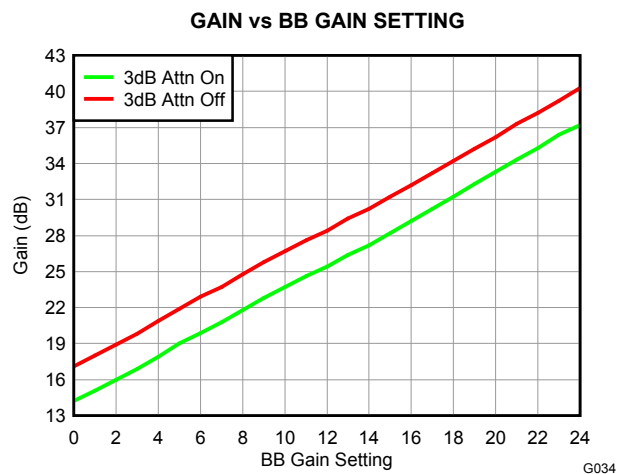


Figure 45.

**TYPICAL CHARACTERISTICS, BASEBAND-RELATED DATA (continued)**

$V_{CC} = 5\text{ V}$ , LO power = 0 dBm,  $T_A = 25^\circ\text{C}$ , independent of balun used (unless otherwise noted)

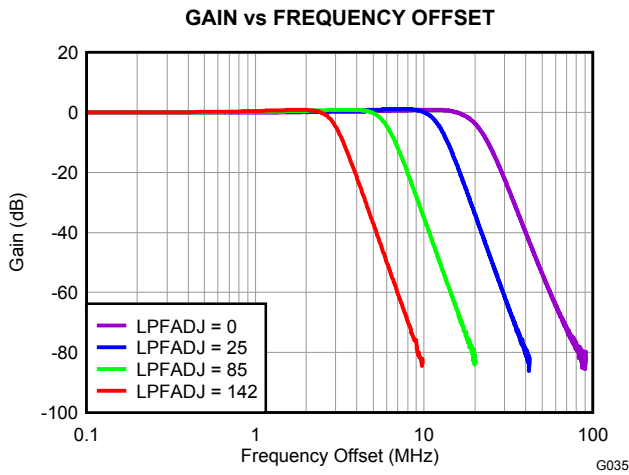


Figure 46.

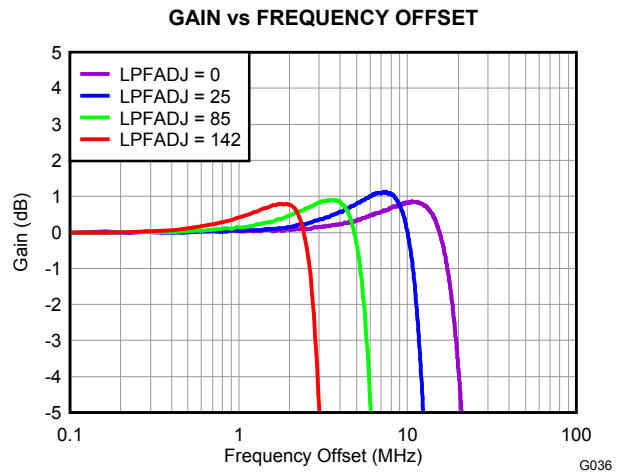


Figure 47.

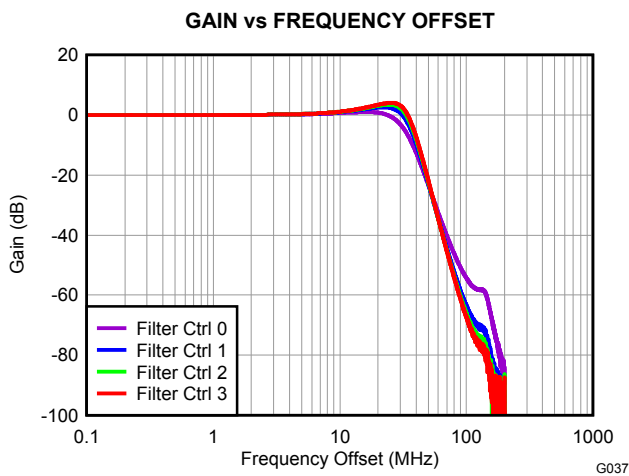


Figure 48. Bypass Mode

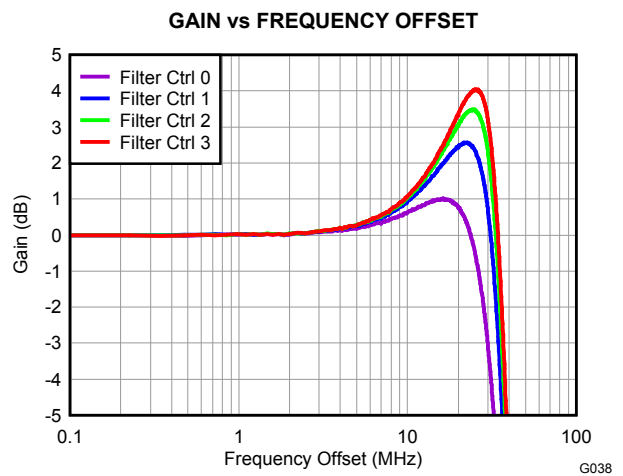


Figure 49. Bypass Mode

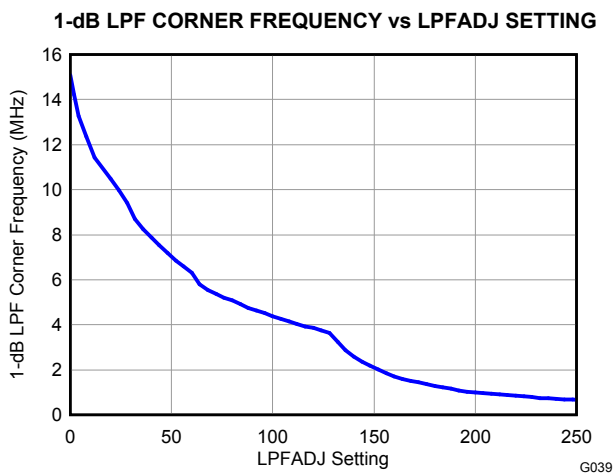


Figure 50.

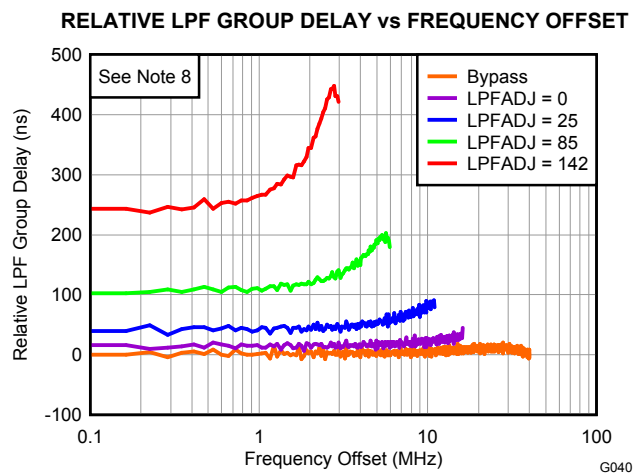


Figure 51.

**TYPICAL CHARACTERISTICS, BASEBAND-RELATED DATA (continued)**

$V_{CC} = 5\text{ V}$ , LO power = 0 dBm,  $T_A = 25^\circ\text{C}$ , independent of balun used (unless otherwise noted)

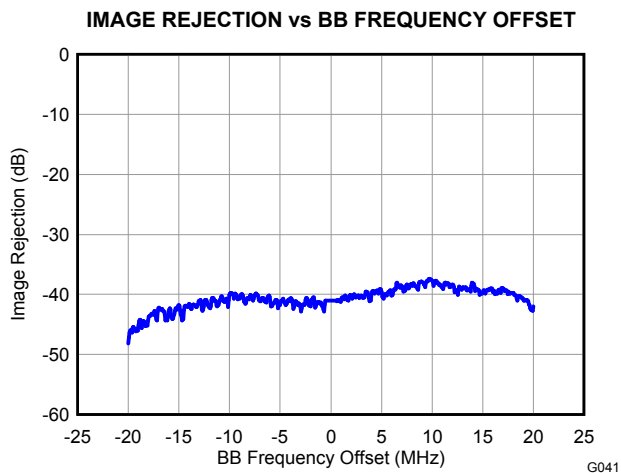


Figure 52.

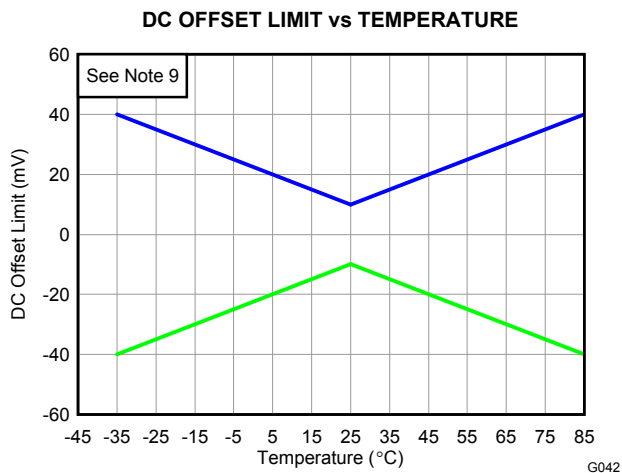


Figure 53.

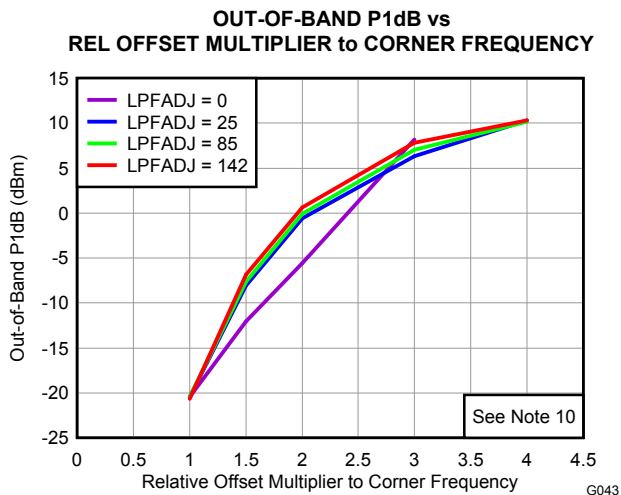


Figure 54.

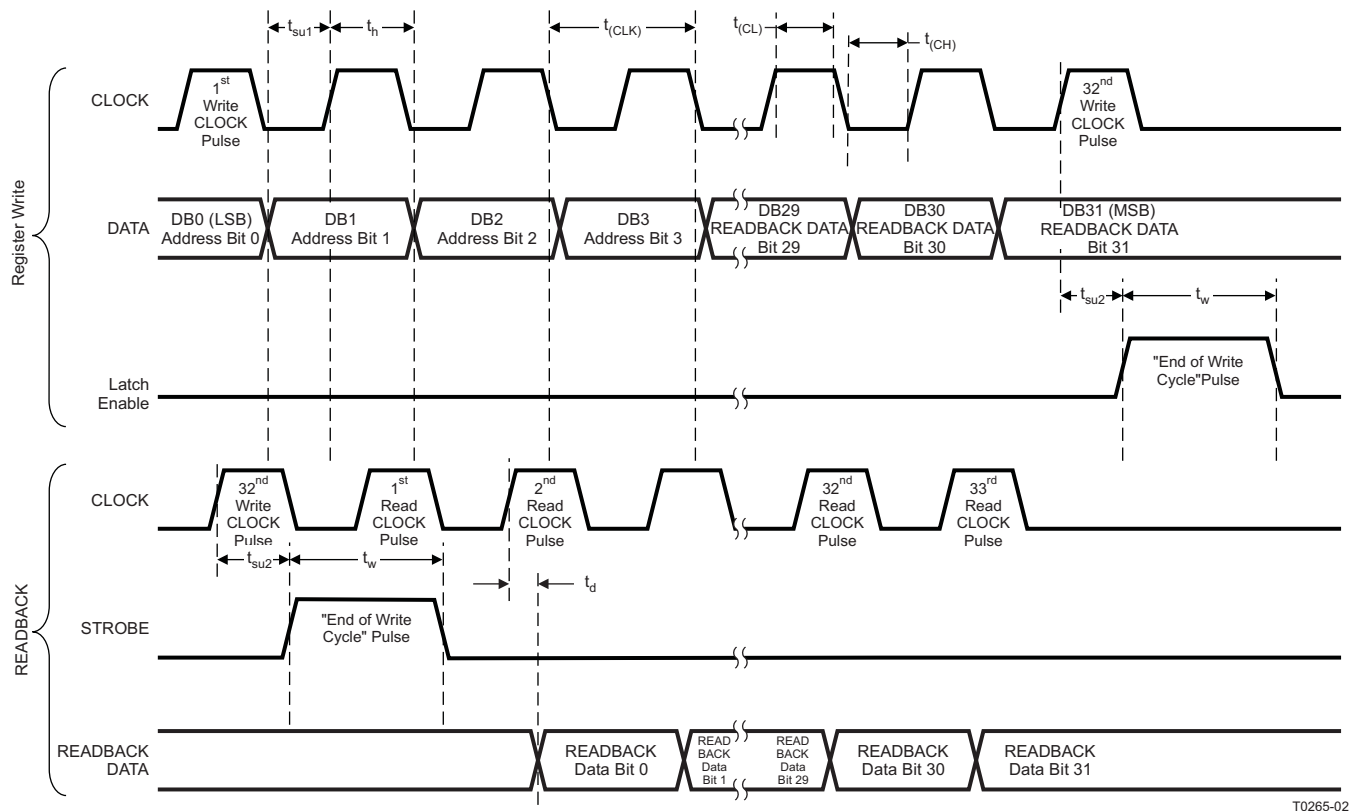
## SERIAL INTERFACE PROGRAMMING REGISTERS DEFINITION

The TRF371135 features a three-wire serial programming interface (SPI) that controls an internal 32-bit shift register. There are three signals that must be applied: CLOCK (pin 48), serial DATA (pin 47), and STROBE (pin 46). DATA (DB0–DB31) is loaded LSB-first and is read on the rising edge of CLOCK. STROBE is asynchronous to CLOCK, and at its rising edge the data in the shift register is loaded into the selected internal register. The first two bits (DB0–DB1) are the address to select the available internal registers.

### READBACK Mode

The TRF371135 implements the capability to read back the content of the serial programming interface registers. In addition, it is possible to read back the status of the internal DAC registers that are automatically set after an auto dc-offset calibration. Each readback consists of two phases: writing followed by the actual reading of the internal data (refer to timing diagram in [Figure 55](#)).

During the writing phase, a command is sent to the TRF371135 to set it in readback mode and to specify which register is to be read. In the proper reading phase, at each rising clock edge, the internal data is transferred into the READBACK pin and can be read at the following falling edge (LSB first). The first clock after LE goes high (end of writing cycle) is idle, and the following 32 clock pulses transfer the internal register content to the READBACK pin.



T0265-02

**Figure 55. Serial Programming Timing Diagram**

**Table 1. Register Summary<sup>(1)</sup>**

Bit #	Reg 1	Reg 2	Bit #	Reg 3	Reg 5	Bit #	Reg 0	
Bit0	ADDR<0,2>	ADDR<0,2>	Bit0	ADDR<0,2>	ADDR<0,2>	Bit0	ADDR<0,2>	
Bit1			Bit1			Bit1		
Bit2			Bit2			Bit2		
Bit3	ADDR<3,4>	ADDR<3,4>	Bit3	ADDR<3,4>	ADDR<3,4>	Bit3	ADDR<3,4>	
Bit4			Bit4			Bit4		
Bit5	PWD_MIX	EN_AUTOCAL	Bit5	ILOAD_a<0,5>	MIX_GM_TRIM<0,1>	Bit5	ID<0,1>	
Bit6	NU	IDAC_BIT<0,7>	Bit6		MIX_LO_TRIM<0,1>	Bit6	NU	
Bit7	PWD_BUF		Bit7		LO_TRIM<0,1>	Bit7		
Bit8	PWD_FILT		Bit8		MIX_BUFF_TRIM<0,1>	Bit8		
Bit9	NU		Bit9			Bit9		
Bit10	PWD_DC_OFF_DIG	Bit10	Bit10					
Bit11	NU	QDAC_BIT<0,7>	Bit11	ILOAD_b<0,5>	FLTR_TRIM<0,1>	Bit11	DC_OFFSET_Q<0,7>	
Bit12	BBGAIN_<0,4>		Bit12		QLOAD_a<0,5>	OUT_BUFF_TRIM<0,1>		Bit12
Bit13			Bit13	QLOAD_b<0,5>		NU		Bit13
Bit14			Bit14					Bit14
Bit15			Bit15	Bit15	Bit15			
Bit16		Bit16	Bit16	Bit16				
Bit17	LPFADJ_<0,7>	IDET_B<0,1>	Bit17	QLOAD_b<0,5>	NU	Bit17	DC_OFFSET_I<0,7>	
Bit18			Bit18			Bit18		
Bit19			Bit19			Bit19		
Bit20			Bit20			Bit20		
Bit21			Bit21			Bit21		
Bit22	EN_FLT_B<0,1>	CAL_SEL	Bit22	QLOAD_b<0,5>	NU	Bit22	DC_OFFSET_I<0,7>	
Bit23		Clk_div_ratio<0,2>	Bit23			Bit23		
Bit24			Bit24			Bit24		
Bit25	EN_FASTGAIN	Cal_clk_sel	Bit25	Bypass	NU	Bit25	DC_OFFSET_I<0,7>	
Bit26			Bit26			Bit26		
Bit27	OSC_TEST	Osc_trim<0,2>	Bit27	Fltr Ctrl_b<0,1>	NU	Bit27	DC_OFFSET_I<0,7>	
Bit28			Bit28			Bit28		
Bit29	NU	Osc_trim<0,2>	Bit29	Fltr Ctrl_b<0,1>	NU	Bit29	DC_OFFSET_I<0,7>	
Bit30			Bit30			Bit30		
Bit31			EN 3dB Attn			Bit31		Bit31

(1) Register 4 is not used.

**Table 2. Register 1 Device Setup**

REGISTER 1	NAME	RESET VALUE	WORKING DESCRIPTION
Bit0	ADDR<0>	1	Register address
Bit1	ADDR<1>	0	
Bit2	ADDR<2>	0	
Bit3	ADDR<3>	1	SPI bank address
Bit4	ADDR<4>	0	
Bit5	PWD_MIX	0	Mixer power down (Off = 1)
Bit6	NU	0	Not used
Bit7	PWD_BUF	1	Mixer out test buffer power down (Off = 1)
Bit8	PWD_FILT	0	Baseband filter power down (Off = 1)
Bit9	NU	0	Not used
Bit10	PWD_DC_OFF_DIG	1	DC offset calibration power down (Off = 1)

**Table 2. Register 1 Device Setup (continued)**

REGISTER 1	NAME	RESET VALUE	WORKING DESCRIPTION
Bit11	NU	1	Not used
Bit12	BBGAIN_0	1	Baseband gain setting. Default = 15. Range is from 0 (minimum gain setting) to 24 (maximum gain setting). See the <a href="#">Application Information</a> section for more information on gain setting and fast gain control options.
Bit13	BBGAIN_1	1	
Bit14	BBGAIN_2	1	
Bit15	BBGAIN_3	1	
Bit16	BBGAIN_4	0	
Bit17	LPFADJ_0	0	Sets programmable low-pass filter corner frequency. Range = 255 (lowest corner frequency) to 0 (highest corner frequency). Default value is 128.
Bit18	LPFADJ_1	0	
Bit19	LPFADJ_2	0	
Bit20	LPFADJ_3	0	
Bit21	LPFADJ_4	0	
Bit22	LPFADJ_5	0	
Bit23	LPFADJ_6	0	
Bit24	LPFADJ_7	1	
Bit25	EN_FLT_B0	0	Selects dc offset detector filter bandwidth. Setting {00, 01, 11} = {10 MHz, 10 kHz, 1 kHz}
Bit26	EN_FLT_B1	0	
Bit27	EN_FASTGAIN	0	Enable external fast-gain control
Bit28	GAIN_SEL	0	Fast-gain control multiplier bit (x2 = 1)
Bit29	OSC_TEST	0	Enables OSC out on readback pin if = 1
Bit30	NU	0	Not used
Bit31	EN 3dB Attn	0	Enables output 3-dB attenuator

**EN\_FLT\_B0/1:** These bits control the bandwidth of the detector used to measure the dc offset during the automatic calibration. There is an RC filter in front of the detector that can be fully bypassed. EN\_FLT\_B0 controls the resistor (bypass = 1), while EN\_FLT\_B1 controls the capacitor (bypass = 1). The typical 3-dB cutoff frequencies of the detector bandwidth are summarized in the following table (see the [Application Information](#) section for more detail on the dc offset calibration and the detector bandwidth).

EN_FLT_B1	EN_FLT_B0	TYPICAL 3-dB CUTOFF FREQ	NOTES
X	0	10 MHz	Maximum bandwidth, bypass R, C
0	1	10 kHz	Enable R
1	1	1 kHz	Minimum bandwidth, enable R, C

**Table 3. Register 2 Device Setup**

REGISTER 2	NAME	RESET VALUE	WORKING DESCRIPTION
Bit0	ADDR<0>	0	Register address
Bit1	ADDR<1>	1	
Bit2	ADDR<2>	0	
Bit3	ADDR<3>	1	SPI bank address
Bit4	ADDR<4>	0	
Bit5	EN_AUTOCAL	0	Enable autocal when = 1; reset to 0 when done.



**Table 3. Register 2 Device Setup (continued)**

REGISTER 2	NAME	RESET VALUE	WORKING DESCRIPTION
Bit6	IDAC_BIT0	0	I-DAC bits to be set during manual dc offset cal
Bit7	IDAC_BIT1	0	
Bit8	IDAC_BIT2	0	
Bit9	IDAC_BIT3	0	
Bit10	IDAC_BIT4	0	
Bit11	IDAC_BIT5	0	
Bit12	IDAC_BIT6	0	
Bit13	IDAC_BIT7	1	Q-DAC bits to be set during manual dc offset cal
Bit14	QDAC_BIT0	0	
Bit15	QDAC_BIT1	0	
Bit16	QDAC_BIT2	0	
Bit17	QDAC_BIT3	0	
Bit18	QDAC_BIT4	0	
Bit19	QDAC_BIT5	0	
Bit20	QDAC_BIT6	0	
Bit21	QDAC_BIT7	1	
Bit22	IDET_B0	1	Set reference current for digital calibration; Settings {00 to 11} = {50 $\mu$ A to 200 $\mu$ A}. Setting 00 = highest resolution.
Bit23	IDET_B1	1	
Bit24	CAL_SEL	1	DC offset calibration select. 0 = manual cal; 1 = autocal.
Bit25	Clk_div_ratio<0>	0	Clk divider ratio. Setting {000 to 111} = {1, 8, 16, 128, 256, 1024, 2048, 16,684}. A higher div ratio (slower clk) improves cal accuracy and reduces speed.
Bit26	Clk_div_ratio<1>	0	
Bit27	Clk_div_ratio<2>	0	
Bit28	Cal_clk_sel	1	Select internal oscillator when 1, SPI clk when 0
Bit29	Osc_trim<0>	1	Internal oscillator frequency trimming; setting {000} = ~300 kHz; Setting {111} = ~1.8 MHz. Nominal setting {110} = ~900 kHz.
Bit30	Osc_trim<1>	1	
Bit31	Osc_trim<2>	0	

**Table 4. Register 3 Device Setup**

REGISTER 3	NAME	RESET VALUE	WORKING DESCRIPTION
Bit0	ADDR<0>	1	Register address
Bit1	ADDR<1>	1	
Bit2	ADDR<2>	0	
Bit3	ADDR<3>	1	SPI bank address
Bit4	ADDR<4>	0	
Bit5	ILOAD_a<0>	0	I mixer offset side A
Bit6	ILOAD_a<1>	0	
Bit7	ILOAD_a<2>	0	
Bit8	ILOAD_a<3>	0	
Bit9	ILOAD_a<4>	0	
Bit10	ILOAD_a<5>	0	I mixer offset side B
Bit11	ILOAD_b<0>	0	
Bit12	ILOAD_b<1>	0	
Bit13	ILOAD_b<2>	0	
Bit14	ILOAD_b<3>	0	
Bit15	ILOAD_b<4>	0	
Bit16	ILOAD_b<5>	0	

**Table 4. Register 3 Device Setup (continued)**

REGISTER 3	NAME	RESET VALUE	WORKING DESCRIPTION
Bit17	QLOAD_a<0>	0	Q mixer offset side A
Bit18	QLOAD_a<1>	0	
Bit19	QLOAD_a<2>	0	
Bit20	QLOAD_a<3>	0	
Bit21	QLOAD_a<4>	0	
Bit22	QLOAD_a<5>	0	
Bit23	QLOAD_b<0>	0	Q mixer offset side B
Bit24	QLOAD_b<1>	0	
Bit25	QLOAD_b<2>	0	
Bit26	QLOAD_b<3>	0	
Bit27	QLOAD_b<4>	0	
Bit28	QLOAD_b<5>	0	
Bit29	Bypass	0	Engage filter bypass
Bit30	Fltr Ctrl_b<0>	1	Used to adjust for filter peaking response; set to 0 in bypass mode, 1 otherwise
Bit31	Fltr Ctrl_b<1>	0	

**I/Q Mixer Load A/B:** These bits adjust the load on the mixer output. All values should be 0. No modification is necessary.

**Register 4:** No programming required for register 4

**Table 5. Register 5 Device Setup**

REGISTER 5	NAME	RESET VALUE	WORKING DESCRIPTION
Bit0	ADDR<0>	1	Register address
Bit1	ADDR<1>	0	
Bit2	ADDR<2>	1	
Bit3	ADDR<3>	1	SPI bank address
Bit4	ADDR<4>	0	
Bit5	MIX_GM_TRIM<0>	1	Mixer gm current trim
Bit6	MIX_GM_TRIM<1>	0	
Bit7	MIX_LO_TRIM<0>	1	Mixer switch core VCM trim
Bit8	MIX_LO_TRIM<1>	0	
Bit9	LO_TRIM<0>	1	LO buffers current trim
Bit10	LO_TRIM<1>	0	
Bit11	MIX_BUFF_TRIM<0>	1	Mixer output buffer current trim
Bit12	MIX_BUFF_TRIM<1>	0	
Bit13	FLTR_TRIM<0>	1	Filter current trim
Bit14	FLTR_TRIM<1>	0	
Bit15	OUT_BUFF_TRIM<0>	1	Filter output buffer current trim
Bit16	OUT_BUFF_TRIM<1>	0	

**Table 5. Register 5 Device Setup (continued)**

REGISTER 5	NAME	RESET VALUE	WORKING DESCRIPTION
Bit17	NU	0	Not used
Bit18		0	
Bit19		0	
Bit20		0	
Bit21		0	
Bit22		0	
Bit23		0	
Bit24		0	
Bit25		0	
Bit26		0	
Bit27		0	
Bit28		0	
Bit29		0	
Bit30		0	
Bit31	0		

**Trims:** the trim values allow for minor bias adjustments of internal stages. Generally it is recommended to leave all trim values at the default value of 1. Linearity performance improvement over a small band of frequencies is possible by selective adjustment of the trim values. Optimized intercept point within the band 2.5 GHz to 2.7 GHz is achieved by setting trim values MIX\_GM\_TRIM<0,1>, MIX\_LO\_TRIM<0,1>, LO\_TRIM<0,1>, MIX\_BUFF\_TRIM<0,1>, FLTR\_TRIM<0,1>, OUT\_BUFF\_TRIM<0,1> to: 2, 3, 0, 1, 2, 1, respectively.

**Readback (Write Command)**

0	0	0	1	0	Zero Fill										
Bit0	Bit1	Bit2	Bit3	Bit4	Bit5	Bit6	Bit7	Bit8	Bit9	Bit10	Bit11	Bit12	Bit13	Bit14	Bit15
Zero fill												Register address		1	
Bit16	Bit17	Bit18	Bit19	Bit20	Bit21	Bit22	Bit23	Bit24	Bit25	Bit26	Bit27	Bit28	Bit29	Bit30	Bit31

**Reg 0: DAC/Device ID Readback**

Register Address			SPI Bank Addr		ID		NU								
Bit0	Bit1	Bit2	Bit3	Bit4	Bit5	Bit6	Bit7	Bit8	Bit9	Bit10	Bit11	Bit12	Bit13	Bit14	Bit15
DC offset Q DAC							DC offset I DAC								
Bit16	Bit17	Bit18	Bit19	Bit20	Bit21	Bit22	Bit23	Bit24	Bit25	Bit26	Bit27	Bit28	Bit29	Bit30	Bit31

**Table 6. Register 0 Device Setup (Read-Only)**

READBACK REGISTER	NAME	RESET VALUE	WORKING DESCRIPTION
Bit0	ADDR<0>	0	Select SPI reg 1 to 5
Bit1	ADDR<1>	0	
Bit2	ADDR<2>	0	
Bit3	ADDR<3>	1	Select SPI bank 1 to 3
Bit4	ADDR<4>	0	
Bit5	ID<0>	1	Version ID: 01 = -25
Bit6	ID<1>	0	

**Table 6. Register 0 Device Setup (Read-Only) (continued)**

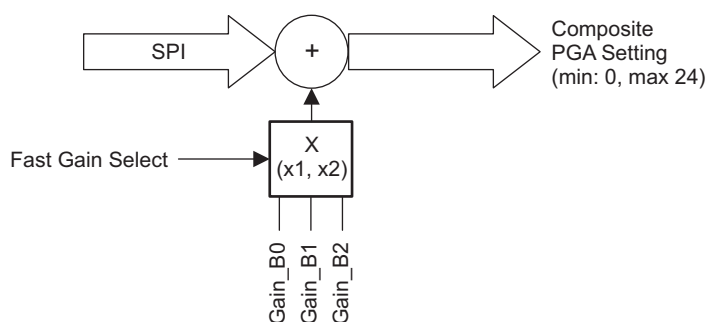
READBACK REGISTER	NAME	RESET VALUE	WORKING DESCRIPTION
Bit7	NU	0	Not used
Bit8		0	
Bit9		0	
Bit10		0	
Bit11		0	
Bit12		0	
Bit13		0	
Bit14		0	
Bit15		0	
Bit16		DC_OFFSET_Q<0>	
Bit17	DC_OFFSET_Q<1>	0	
Bit18	DC_OFFSET_Q<2>	0	
Bit19	DC_OFFSET_Q<3>	0	
Bit20	DC_OFFSET_Q<4>	0	
Bit21	DC_OFFSET_Q<5>	0	
Bit22	DC_OFFSET_Q<6>	0	
Bit23	DC_OFFSET_Q<7>	1	DC offset DAC I register
Bit24	DC_OFFSET_I<0>	0	
Bit25	DC_OFFSET_I<1>	0	
Bit26	DC_OFFSET_I<2>	0	
Bit27	DC_OFFSET_I<3>	0	
Bit28	DC_OFFSET_I<4>	0	
Bit29	DC_OFFSET_I<5>	0	
Bit30	DC_OFFSET_I<6>	0	
Bit31	DC_OFFSET_I<7>	1	

## APPLICATION INFORMATION

### Gain Control

The TRF371135 integrates a baseband programmable-gain amplifier (PGA) that provides 24 dB of gain range with 1-dB steps. The PGA gain is controlled through SPI by a 5-bit word (register 1 bits <12,16>). Alternatively, the PGA can be programmed by a combination of five bits programmed through the SPI and three parallel external bits (pins Gain\_B2, Gain\_B1, Gain\_B0). The external bits are used to reduce the PGA setting quickly without having to reprogram the SPI registers. The fast gain control multiplier bit (register 1 bit 28) sets the step size of each bit to either 1 dB or 2 dB. This allows a fast gain reduction of 0 dB to 7 dB in 1-dB steps or 0 dB to 14 dB in 2-dB steps.

The PGA gain control word (BBGAIN<0,4>) can be programmed to a setting between 0 and 24. This word is the SPI programmed gain (register 1 bits <12,16>) minus the parallel external 3 bits as shown in Figure 56. Note that the PGA gain setting rails at 0 and does not go any lower. Typical applications set the nominal PGA gain setting to 17 and use the fast-gain control bits to protect the analog-to-digital converter in the event of a strong input jammer signal.



B0386-01

Figure 56. PGA Gain Control Word

For example, if a PGA gain setting of 19 is desired, then the SPI can be programmed directly to a value of 19. Alternatively, the SPI gain register can be programmed to 24 and the parallel external bits set to 101 (binary) corresponding to 5-dB reduction.

### Automated DC Offset Calibration

The TRF371135 provides an automatic calibration procedure for adjusting the dc offset in the baseband I/Q paths. The internal calibration requires a clock in order to function. The TRF371135 can use the internal relaxation oscillator or the external SPI clock. Using the internal oscillator is the preferred method, which is selected by setting the Cal\_clk\_sel (register 2, bit 28) to 1. The internal oscillator frequency is set through the Osc\_trim bits (register 2, bits <29,31>). The frequency of the oscillator is detailed in Table 7; however, it is expected the actual frequency of operation can vary plus or minus 35% due to process variations. The oscillator frequency can be monitored on the READBACK pin when the Osc\_test register (register 1, bit 29) is set to 1.

Table 7. Internal Oscillator Frequency Control

Osc_trim<2>	Osc_trim<1>	Osc_trim<0>	FREQUENCY
0	0	0	300 kHz
0	0	1	500 kHz
0	1	0	700 kHz
0	1	1	900 kHz
1	0	0	1.1 MHz
1	0	1	1.3 MHz
1	1	0	1.5 MHz
1	1	1	1.8 MHz

The default setting of these registers corresponds to a 900-kHz oscillator frequency. This is sufficient for autocalibration; modification is not required except for faster calibration convergence.

The output full-scale range of the internal dc offset correction DACs is programmable (IDET\_B<0,1>, register 2 bits<22,23>). The range is shown in [Table 8](#).

**Table 8. DC Offset Correction DAC Programmable Range**

IDET_B0	IDET_B1	Full Scale
0	0	50 $\mu$ A
0	1	100 $\mu$ A
1	0	150 $\mu$ A
1	1	200 $\mu$ A

The I- and Q-channel output maximum dc offset correction range can be calculated by multiplying the values in the table by the baseband PGA gain. The LSB of the digital correction is dependent on the programmed maximum correction range. For optimum resolution and best correction, the dc offset DAC range should be set to 50  $\mu$ A with the PGA gain set for the nominal condition. The dc offset correction DAC output is affected by a change in the PGA gain, but if the initial calibration yields optimum results, then the adjustment of the PGA gain during normal operation does not significantly impair the dc offset balance. For example, if the optimized calibration yields a dc offset balance of 2 mV at a gain setting of 17, then the dc offset maintains less than 10 mV balance as the gain is adjusted  $\pm 7$  dB.

The dc offset correction DACs are programmed from the internal registers when the CAL\_SEL bit (register 2, bit 24) is set to 1. At start-up, the internal registers are loaded at half-scale, corresponding to a decimal value of 128. The auto-cal is initiated by toggling the EN\_AUTO\_CAL bit (register 2, bit 5) to 1. When the calibration is over, this bit is automatically reset to 0. During calibration, the RF local oscillator must be applied. The dc offset DAC state is stored in the internal registers and maintained as long as the power supply is kept on or until a new calibration is started.

The required clock speed for the optimum calibration is determined by the internal detector behavior (integration bandwidth, gain, sensitivity). The input bandwidth of the detector can be adjusted by changing the cutoff frequency of the RC low-pass filter in front of the detector (register 1, bits 25–26). EN\_FLT\_B0 controls the resistor (bypass = 1) and EN\_FLT\_B1 controls the capacitor (bypass = 1). The typical 3-dB cutoff frequencies of the detector bandwidth are summarized in [Table 9](#). The speed of the clock can be slowed down by selecting a clock divider ratio (register 2, bits 25–27).

**Table 9. Detector Bandwidth Settings**

EN_FLT_B1	EN_FLT_B0	TYPICAL 3-dB CUTOFF FREQUENCY	NOTES
X	0	10 MHz	Maximum bandwidth, bypass R, C
0	1	10 kHz	Enable R
1	1	1 kHz	Minimum bandwidth, enable R, C

The detector has more averaging time with a slower clock; hence, it is desirable to slow down the clock speed for a given condition to achieve optimum results. For example, if there is no RF present on the RF input port, the detection filter can be left wide (10 MHz) and the clock divider can be left at div-by-128. The autocalibration yields a dc offset balance between the differential baseband output ports (I and Q) that is less than 15 mV. Some minor improvement may be obtained by increasing the averaging of the detector by increasing the clock divider up to 256 or 1024.

On the other hand, if there is a modulated RF signal present at the input port, it is desirable to reduce the detector bandwidth to filter out most of the modulated signal. The detector bandwidth can be set to a 1-kHz corner frequency. With the modulated signal present and with the detection bandwidth reduced, additional averaging is required to get the optimum results. A clock divider setting of 1024 yields optimum results.

Of course, an increase in the averaging is possible by increasing the clock divider at the expense of longer converging time. The convergence time can be calculated by the following:

$$\tau_c = \frac{(\text{Auto\_Cal\_Clk\_Cycles}) \times (\text{Clk\_Divider})}{\text{Osc\_Freq}} \quad (1)$$

The dc offset calibration converges in approximately nine cycles. For the case with a clock divider of 1024 and with the nominal oscillator frequency of 900 kHz, the convergence time is:

$$\tau_c = \frac{(9) \times (1024)}{900 \text{ kHz}} = 10.24 \text{ ms} \quad (2)$$

### Alternate Method for Adjusting DC Offset

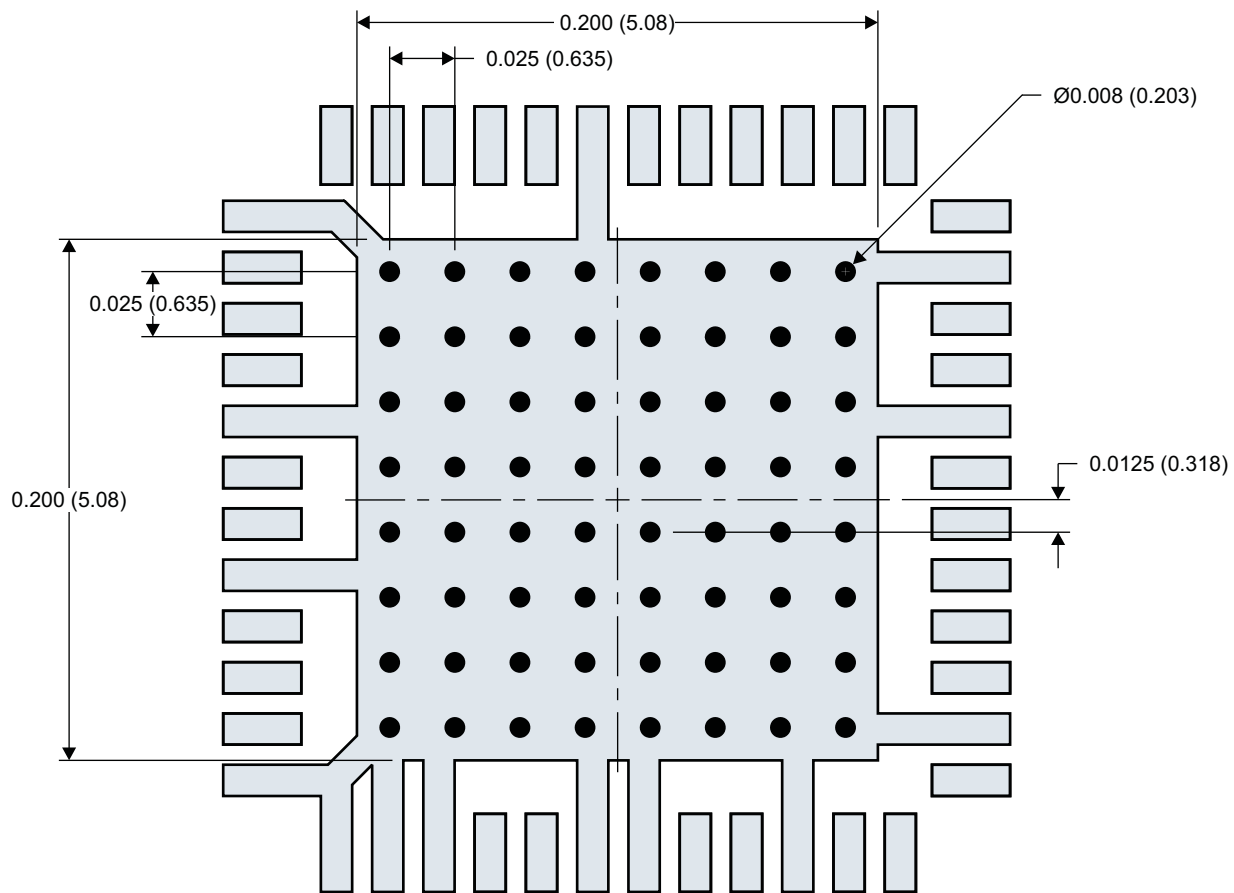
The internal registers controlling the internal dc current DAC are accessible through the SPI, providing a user-programmable method for implementing the dc offset calibration. To employ this option the CAL\_SEL bit must be set to 0. During this calibration, an external instrument monitors the output dc offset between the I/Q differential outputs and programs the internal registers (IDAC\_BIT<0,7> and QDAC\_BIT<0,7> bits) to cancel the dc offset.

## PCB Layout Guidelines

The TRF371135 device is fitted with a ground slug on the back of the package that must be soldered to the PCB ground with adequate ground vias to ensure a good thermal and electrical connection. The recommended via pattern and ground pad dimensions are shown in Figure 57. The recommended via diameter is 8 mils (0.2 mm). The ground pins of the device can be directly tied to the ground slug pad for a low-inductance path to ground. Additional ground vias may be added if space allows. The no-connect (NC) pins can also be tied to the ground plane.

Decoupling capacitors at each of the supply pins is recommended. The high-frequency decoupling capacitors for the RF mixers (VCCMIX) should be placed close to their respective pins. The value of the capacitor should be chosen to provide a low-impedance RF path to ground at the frequency of operation. Typically, this value is around 10 pF or lower. The other decoupling capacitors at the other supply pins should be kept as close to their respective pins as possible.

The device exhibits symmetry with respect to the quadrature output paths. It is recommended that the PCB layout maintain that symmetry in order to ensure the quadrature balance of the device is not impaired. The I/Q output traces should be routed as differential pairs and their lengths all kept equal to each other. Decoupling capacitors for the supply pins should be kept symmetrical where possible. The RF differential input lines related to the RF input and the LO input should also be routed as differential lines with their respective lengths kept equal. If an RF balun is used to convert a single-ended input to a differential input, then the RF balun should be placed close to the device. Implement the RF balun layout per the manufacturer's guidelines to provide best gain and phase balance to the differential outputs. On the RF traces, maintain proper trace widths to keep the characteristic impedance of the RF traces at a nominal 50  $\Omega$ .



Note: Dimensions are in inches (mm)

M0177-01

**Figure 57. PCB Layout Guidelines**



### Application Schematic

The typical application schematic is shown in Figure 58. The RF bypass capacitors and coupling capacitors on the supply pins should be adjusted to provide the best high-frequency bypass based on the frequency of operation.

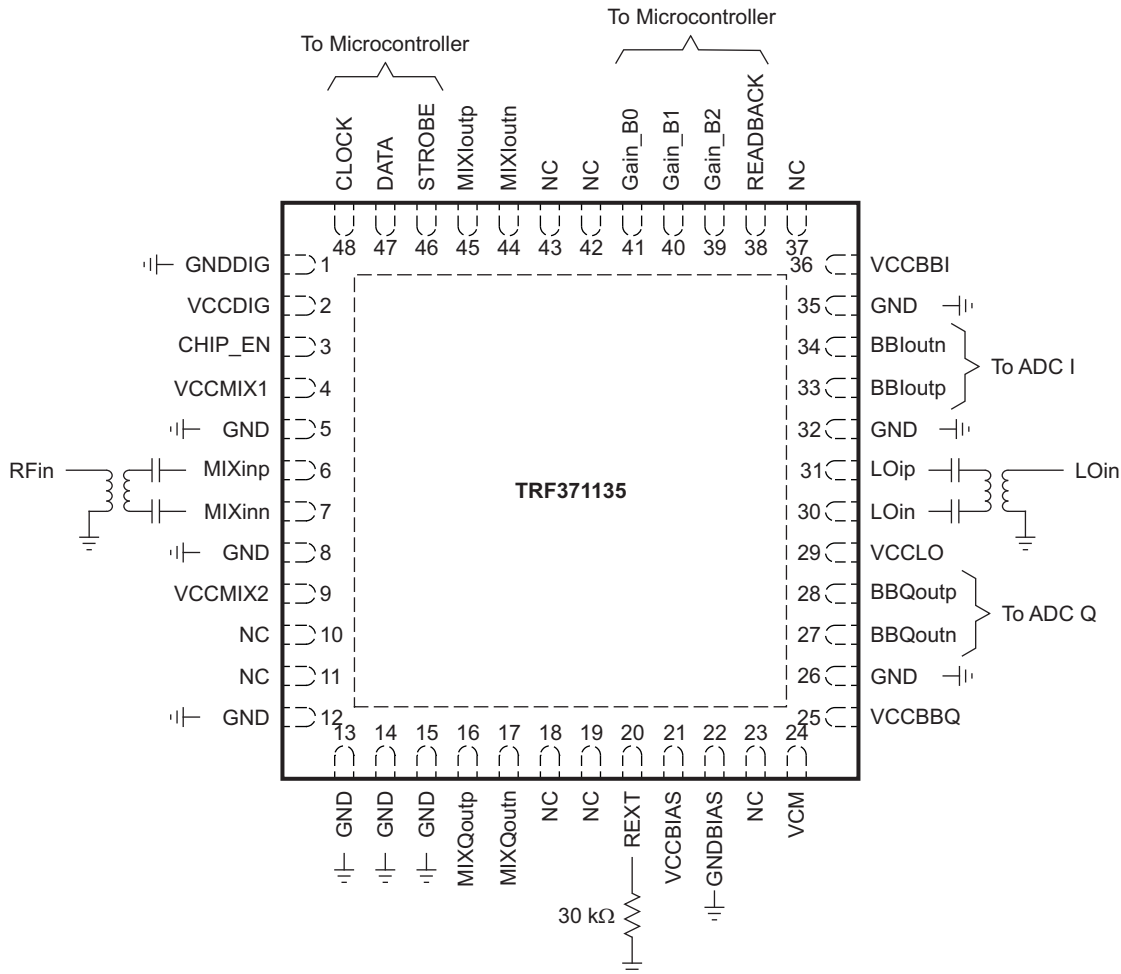


Figure 58. TRF371135 Application Schematic

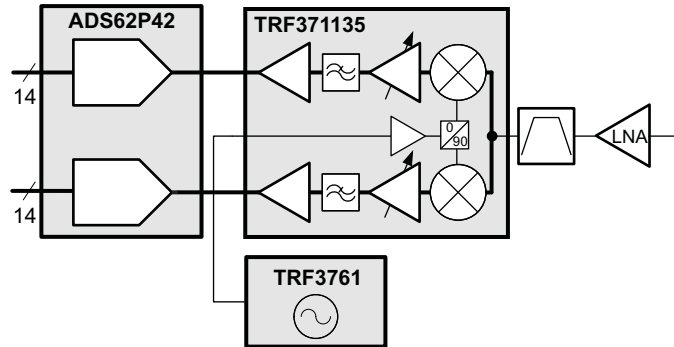
The RF input port and the RF LO port require differential input paths. Single-ended RF inputs to these ports can be converted with an RF balun that is centered at the band of interest. Linearity performance of the TRF371135 is dependent on the amplitude and phase balance of the RF balun; hence, care should be taken with the selection of the balun device and with the RF layout of the device. The recommended RF balun devices are listed in Table 10.

Table 10. RF Balun Devices

MANUFACTURER	PART NUMBER	FREQUENCY RANGE	UNBALANCE IMPEDANCE	BALANCE IMPEDANCE
Murata	LDB211G8005C-001	1800 MHz ±100 MHz	50 Ω	50 Ω
Murata	LDB211G9005C-001	1900 MHz ±100 MHz	50 Ω	50 Ω
Murata	LDB212G4005C-001	2.3 GHz to 2.7 GHz	50 Ω	50 Ω
Johanson	3600BL14M050E	3.3 GHz to 3.8 GHz	50 Ω	50 Ω
Johanson	5400BL15B050E	4.9 GHz to 5.9 GHz	50 Ω	50 Ω

## Application for a High-Performance RF Receiver Signal Chain

The TRF371135 is the centerpiece component in a high-performance direct-downconversion receiver. The device is a highly integrated direct-downconversion demodulator that requires minimal additional devices to complete the signal chain. A signal chain block diagram example is shown in [Figure 59](#).



**Figure 59. Block Diagram of Direct-Downconvert Receiver**

The lineup requires a low-noise amplifier (LNA) that operates at the frequency of interest with typical 1- to 2-dB noise figure (NF) performance. An RF band-pass filter (BPF) is selected at the frequency band of interest to eliminate unwanted signals and images outside the band from reaching the demodulator. The TRF371135 incorporates the direct-downconvert demodulation, baseband filtering, and baseband gain-control functions. An external synthesizer, such as the TRF3761, is used to provide the local oscillator (LO) source to the TRF371135. The differential outputs of the TRF3761 directly mate with LO input of the TRF371135. The quadrature outputs (I/Q) of the TRF371135 directly drive the input to the analog-to-digital converter (ADC). A dual ADC like the ADS62P42 14-bit 65-MSPS ADC mates perfectly with the differential I/Q output of the TRF371135. The baseband output pins (pins 27, 28, 33, 34) can be connected directly to the corresponding input pins of typical ADCs. The positive and negative terminal connections between the TRF371135 and the ADC can be swapped to facilitate a clean routing layout. The swapped connection can be reversed by flipping the signals in the digital domain, if desired. In addition, the common-mode output voltage generated by the ADC is fed directly into the common-mode port (pin 24) to ensure the optimum dynamic range of the ADC is maintained.

## EVALUATION TOOLS

An evaluation module is available to test the TRF371135 performance. The TRF371135EVM can be configured with different baluns to enable operation in various frequency bands. The TRF371135EVM is available for purchase through the Texas Instruments web site at [www.ti.com](http://www.ti.com).

## REVISION HISTORY

NOTE: Page numbers for previous revisions may differ from page numbers in the current version.

<b>Changes from Original (February, 2010) to Revision A</b>	<b>Page</b>
• Corrected product name discussed throughout document .....	1
• Added <a href="#">Evaluation Tools</a> .....	50

**PACKAGING INFORMATION**

Orderable Device	Status (1)	Package Type	Package Drawing	Pins	Package Qty	Eco Plan (2)	Lead/Ball Finish	MSL Peak Temp (3)	Op Temp (°C)	Top-Side Markings (4)	Samples
TRF371135IRGZR	ACTIVE	VQFN	RGZ	48	2500	Green (RoHS & no Sb/Br)	CU NIPDAU	Level-2-260C-1 YEAR	-40 to 85	TRF 371135IRGZ	<a href="#">Samples</a>
TRF371135IRGZT	ACTIVE	VQFN	RGZ	48	250	Green (RoHS & no Sb/Br)	CU NIPDAU	Level-2-260C-1 YEAR	-40 to 85	TRF 371135IRGZ	<a href="#">Samples</a>

(1) The marketing status values are defined as follows:

**ACTIVE:** Product device recommended for new designs.

**LIFEBUY:** TI has announced that the device will be discontinued, and a lifetime-buy period is in effect.

**NRND:** Not recommended for new designs. Device is in production to support existing customers, but TI does not recommend using this part in a new design.

**PREVIEW:** Device has been announced but is not in production. Samples may or may not be available.

**OBSOLETE:** TI has discontinued the production of the device.

(2) Eco Plan - The planned eco-friendly classification: Pb-Free (RoHS), Pb-Free (RoHS Exempt), or Green (RoHS & no Sb/Br) - please check <http://www.ti.com/productcontent> for the latest availability information and additional product content details.

**TBD:** The Pb-Free/Green conversion plan has not been defined.

**Pb-Free (RoHS):** TI's terms "Lead-Free" or "Pb-Free" mean semiconductor products that are compatible with the current RoHS requirements for all 6 substances, including the requirement that lead not exceed 0.1% by weight in homogeneous materials. Where designed to be soldered at high temperatures, TI Pb-Free products are suitable for use in specified lead-free processes.

**Pb-Free (RoHS Exempt):** This component has a RoHS exemption for either 1) lead-based flip-chip solder bumps used between the die and package, or 2) lead-based die adhesive used between the die and leadframe. The component is otherwise considered Pb-Free (RoHS compatible) as defined above.

**Green (RoHS & no Sb/Br):** TI defines "Green" to mean Pb-Free (RoHS compatible), and free of Bromine (Br) and Antimony (Sb) based flame retardants (Br or Sb do not exceed 0.1% by weight in homogeneous material)

(3) MSL, Peak Temp. -- The Moisture Sensitivity Level rating according to the JEDEC industry standard classifications, and peak solder temperature.

(4) Multiple Top-Side Markings will be inside parentheses. Only one Top-Side Marking contained in parentheses and separated by a "~" will appear on a device. If a line is indented then it is a continuation of the previous line and the two combined represent the entire Top-Side Marking for that device.

**Important Information and Disclaimer:** The information provided on this page represents TI's knowledge and belief as of the date that it is provided. TI bases its knowledge and belief on information provided by third parties, and makes no representation or warranty as to the accuracy of such information. Efforts are underway to better integrate information from third parties. TI has taken and continues to take reasonable steps to provide representative and accurate information but may not have conducted destructive testing or chemical analysis on incoming materials and chemicals. TI and TI suppliers consider certain information to be proprietary, and thus CAS numbers and other limited information may not be available for release.

In no event shall TI's liability arising out of such information exceed the total purchase price of the TI part(s) at issue in this document sold by TI to Customer on an annual basis.

## TAPE AND REEL INFORMATION



### QUADRANT ASSIGNMENTS FOR PIN 1 ORIENTATION IN TAPE



\*All dimensions are nominal

Device	Package Type	Package Drawing	Pins	SPQ	Reel Diameter (mm)	Reel Width W1 (mm)	A0 (mm)	B0 (mm)	K0 (mm)	P1 (mm)	W (mm)	Pin1 Quadrant
TRF371135IRGZR	VQFN	RGZ	48	2500	330.0	16.4	7.3	7.3	1.5	12.0	16.0	Q2
TRF371135IRGZT	VQFN	RGZ	48	250	180.0	16.4	7.3	7.3	1.5	12.0	16.0	Q2

**TAPE AND REEL BOX DIMENSIONS**

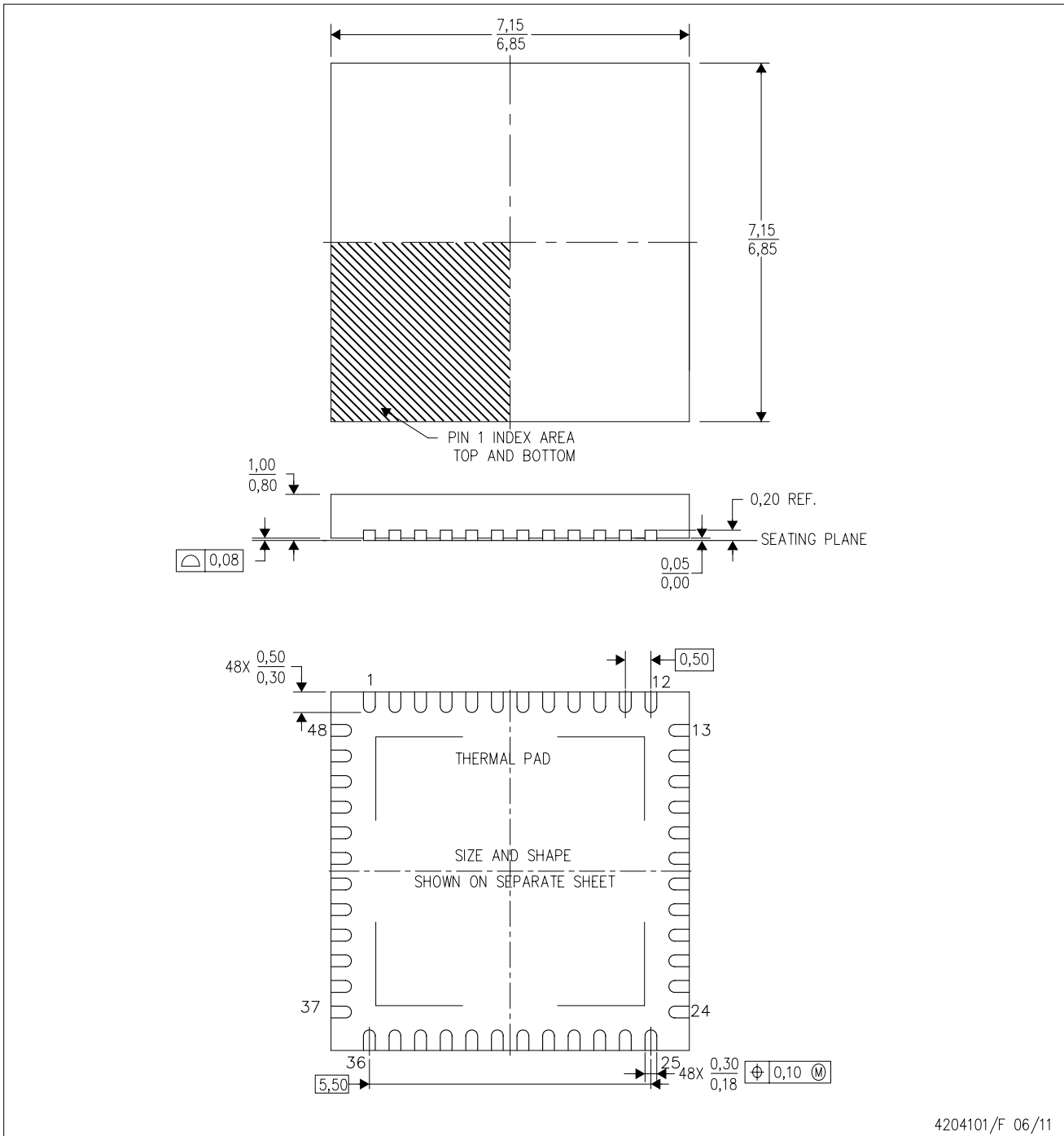


\*All dimensions are nominal

Device	Package Type	Package Drawing	Pins	SPQ	Length (mm)	Width (mm)	Height (mm)
TRF371135IRGZR	VQFN	RGZ	48	2500	336.6	336.6	28.6
TRF371135IRGZT	VQFN	RGZ	48	250	213.0	191.0	55.0

RGZ (S-PVQFN-N48)

PLASTIC QUAD FLATPACK NO-LEAD



4204101/F 06/11

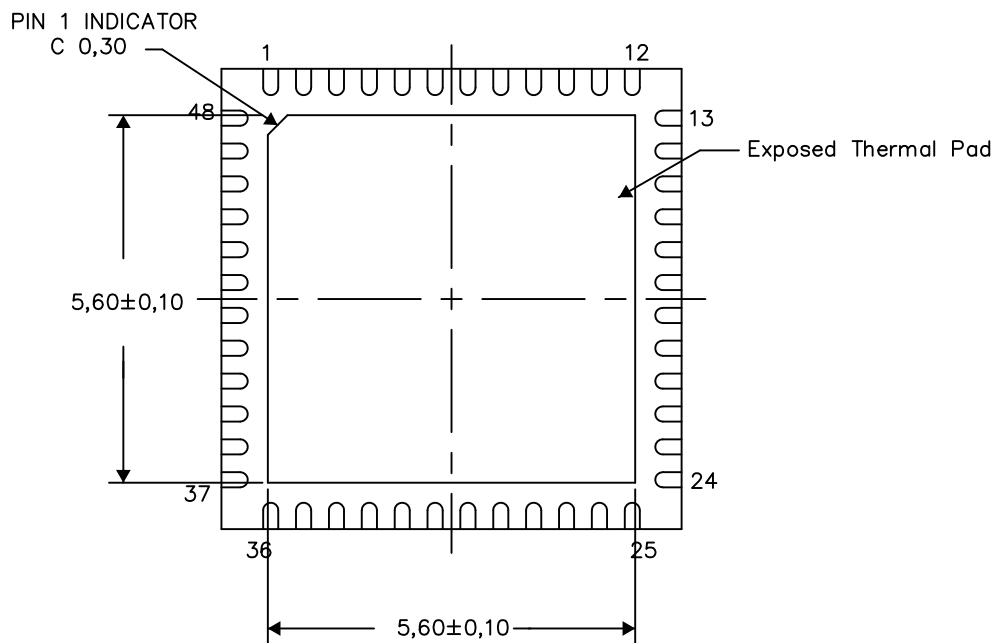
- NOTES:
- A. All linear dimensions are in millimeters. Dimensioning and tolerancing per ASME Y14.5M-1994.
  - B. This drawing is subject to change without notice.
  - C. Quad Flatpack, No-leads (QFN) package configuration.
  - D. The package thermal pad must be soldered to the board for thermal and mechanical performance.
  - E. See the additional figure in the Product Data Sheet for details regarding the exposed thermal pad features and dimensions.
  - F. Falls within JEDEC MO-220.

**THERMAL INFORMATION**

This package incorporates an exposed thermal pad that is designed to be attached directly to an external heatsink. The thermal pad must be soldered directly to the printed circuit board (PCB). After soldering, the PCB can be used as a heatsink. In addition, through the use of thermal vias, the thermal pad can be attached directly to the appropriate copper plane shown in the electrical schematic for the device, or alternatively, can be attached to a special heatsink structure designed into the PCB. This design optimizes the heat transfer from the integrated circuit (IC).

For information on the Quad Flatpack No-Lead (QFN) package and its advantages, refer to Application Report, QFN/SON PCB Attachment, Texas Instruments Literature No. SLUA271. This document is available at [www.ti.com](http://www.ti.com).

The exposed thermal pad dimensions for this package are shown in the following illustration.



Bottom View

Exposed Thermal Pad Dimensions

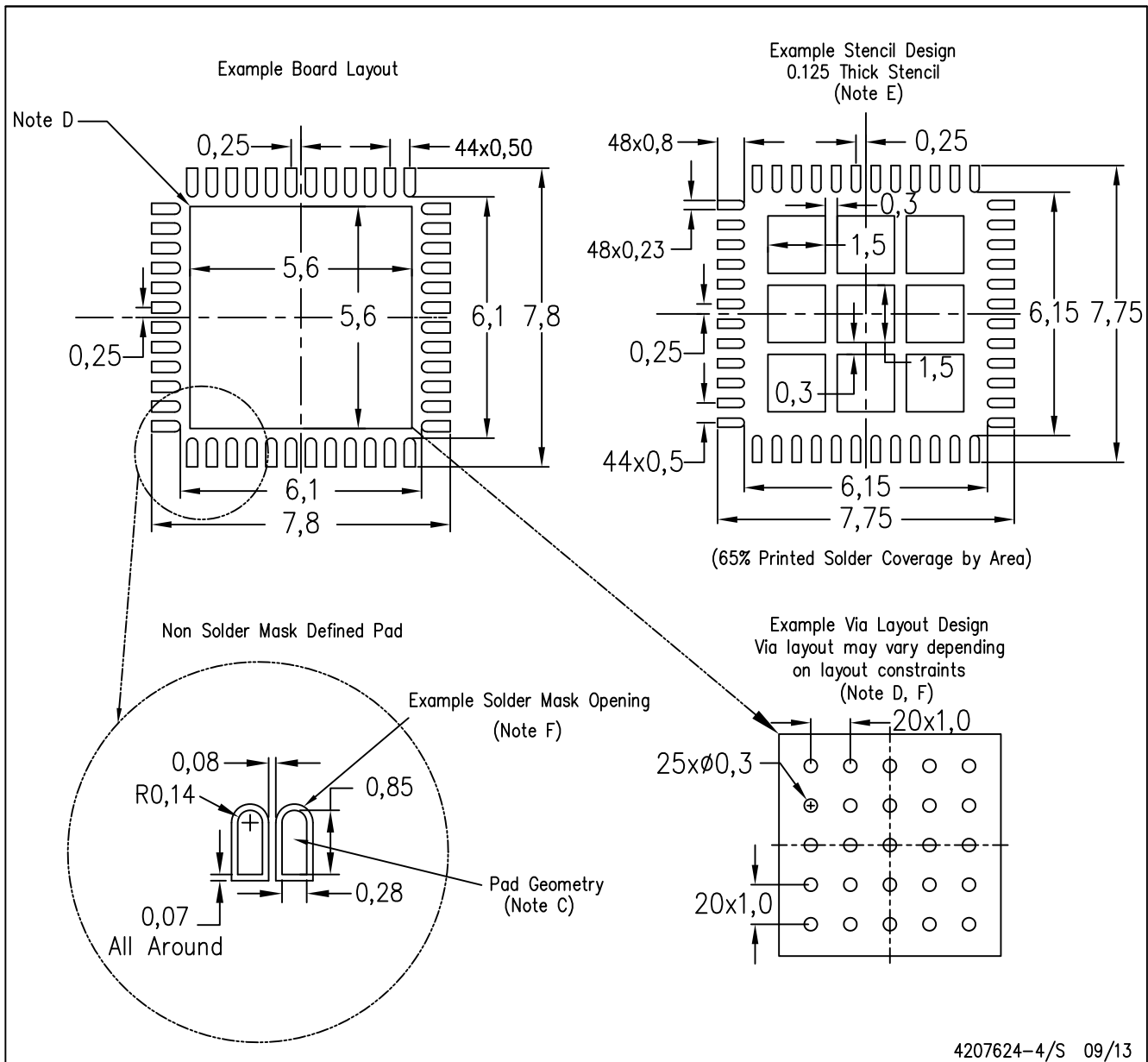
4206354-5/X 01/14

NOTE: All linear dimensions are in millimeters



RGZ (S-PVQFN-N48)

PLASTIC QUAD FLATPACK NO-LEAD



- NOTES:
- A. All linear dimensions are in millimeters.
  - B. This drawing is subject to change without notice.
  - C. Publication IPC-7351 is recommended for alternate designs.
  - D. This package is designed to be soldered to a thermal pad on the board. Refer to Application Note, Quad Flat-Pack Packages, Texas Instruments Literature No. SLUA271, and also the Product Data Sheets for specific thermal information, via requirements, and recommended board layout. These documents are available at [www.ti.com](http://www.ti.com) <<http://www.ti.com>>.
  - E. Laser cutting apertures with trapezoidal walls and also rounding corners will offer better paste release. Customers should contact their board assembly site for stencil design recommendations. Refer to IPC 7525 for stencil design considerations.
  - F. Customers should contact their board fabrication site for recommended solder mask tolerances and via tenting recommendations for vias placed in the thermal pad.

## IMPORTANT NOTICE

Texas Instruments Incorporated and its subsidiaries (TI) reserve the right to make corrections, enhancements, improvements and other changes to its semiconductor products and services per JESD46, latest issue, and to discontinue any product or service per JESD48, latest issue. Buyers should obtain the latest relevant information before placing orders and should verify that such information is current and complete. All semiconductor products (also referred to herein as "components") are sold subject to TI's terms and conditions of sale supplied at the time of order acknowledgment.

TI warrants performance of its components to the specifications applicable at the time of sale, in accordance with the warranty in TI's terms and conditions of sale of semiconductor products. Testing and other quality control techniques are used to the extent TI deems necessary to support this warranty. Except where mandated by applicable law, testing of all parameters of each component is not necessarily performed.

TI assumes no liability for applications assistance or the design of Buyers' products. Buyers are responsible for their products and applications using TI components. To minimize the risks associated with Buyers' products and applications, Buyers should provide adequate design and operating safeguards.

TI does not warrant or represent that any license, either express or implied, is granted under any patent right, copyright, mask work right, or other intellectual property right relating to any combination, machine, or process in which TI components or services are used. Information published by TI regarding third-party products or services does not constitute a license to use such products or services or a warranty or endorsement thereof. Use of such information may require a license from a third party under the patents or other intellectual property of the third party, or a license from TI under the patents or other intellectual property of TI.

Reproduction of significant portions of TI information in TI data books or data sheets is permissible only if reproduction is without alteration and is accompanied by all associated warranties, conditions, limitations, and notices. TI is not responsible or liable for such altered documentation. Information of third parties may be subject to additional restrictions.

Resale of TI components or services with statements different from or beyond the parameters stated by TI for that component or service voids all express and any implied warranties for the associated TI component or service and is an unfair and deceptive business practice. TI is not responsible or liable for any such statements.

Buyer acknowledges and agrees that it is solely responsible for compliance with all legal, regulatory and safety-related requirements concerning its products, and any use of TI components in its applications, notwithstanding any applications-related information or support that may be provided by TI. Buyer represents and agrees that it has all the necessary expertise to create and implement safeguards which anticipate dangerous consequences of failures, monitor failures and their consequences, lessen the likelihood of failures that might cause harm and take appropriate remedial actions. Buyer will fully indemnify TI and its representatives against any damages arising out of the use of any TI components in safety-critical applications.

In some cases, TI components may be promoted specifically to facilitate safety-related applications. With such components, TI's goal is to help enable customers to design and create their own end-product solutions that meet applicable functional safety standards and requirements. Nonetheless, such components are subject to these terms.

No TI components are authorized for use in FDA Class III (or similar life-critical medical equipment) unless authorized officers of the parties have executed a special agreement specifically governing such use.

Only those TI components which TI has specifically designated as military grade or "enhanced plastic" are designed and intended for use in military/aerospace applications or environments. Buyer acknowledges and agrees that any military or aerospace use of TI components which have **not** been so designated is solely at the Buyer's risk, and that Buyer is solely responsible for compliance with all legal and regulatory requirements in connection with such use.

TI has specifically designated certain components as meeting ISO/TS16949 requirements, mainly for automotive use. In any case of use of non-designated products, TI will not be responsible for any failure to meet ISO/TS16949.

### Products

Audio	<a href="http://www.ti.com/audio">www.ti.com/audio</a>
Amplifiers	<a href="http://amplifier.ti.com">amplifier.ti.com</a>
Data Converters	<a href="http://dataconverter.ti.com">dataconverter.ti.com</a>
DLP® Products	<a href="http://www.dlp.com">www.dlp.com</a>
DSP	<a href="http://dsp.ti.com">dsp.ti.com</a>
Clocks and Timers	<a href="http://www.ti.com/clocks">www.ti.com/clocks</a>
Interface	<a href="http://interface.ti.com">interface.ti.com</a>
Logic	<a href="http://logic.ti.com">logic.ti.com</a>
Power Mgmt	<a href="http://power.ti.com">power.ti.com</a>
Microcontrollers	<a href="http://microcontroller.ti.com">microcontroller.ti.com</a>
RFID	<a href="http://www.ti-rfid.com">www.ti-rfid.com</a>
OMAP Applications Processors	<a href="http://www.ti.com/omap">www.ti.com/omap</a>
Wireless Connectivity	<a href="http://www.ti.com/wirelessconnectivity">www.ti.com/wirelessconnectivity</a>

### Applications

Automotive and Transportation	<a href="http://www.ti.com/automotive">www.ti.com/automotive</a>
Communications and Telecom	<a href="http://www.ti.com/communications">www.ti.com/communications</a>
Computers and Peripherals	<a href="http://www.ti.com/computers">www.ti.com/computers</a>
Consumer Electronics	<a href="http://www.ti.com/consumer-apps">www.ti.com/consumer-apps</a>
Energy and Lighting	<a href="http://www.ti.com/energy">www.ti.com/energy</a>
Industrial	<a href="http://www.ti.com/industrial">www.ti.com/industrial</a>
Medical	<a href="http://www.ti.com/medical">www.ti.com/medical</a>
Security	<a href="http://www.ti.com/security">www.ti.com/security</a>
Space, Avionics and Defense	<a href="http://www.ti.com/space-avionics-defense">www.ti.com/space-avionics-defense</a>
Video and Imaging	<a href="http://www.ti.com/video">www.ti.com/video</a>

### TI E2E Community

[e2e.ti.com](http://e2e.ti.com)