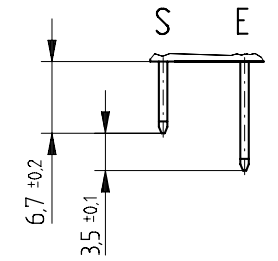
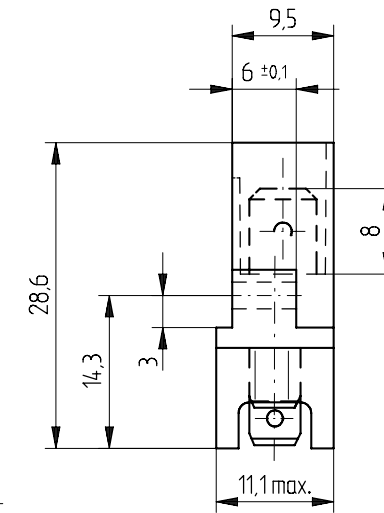
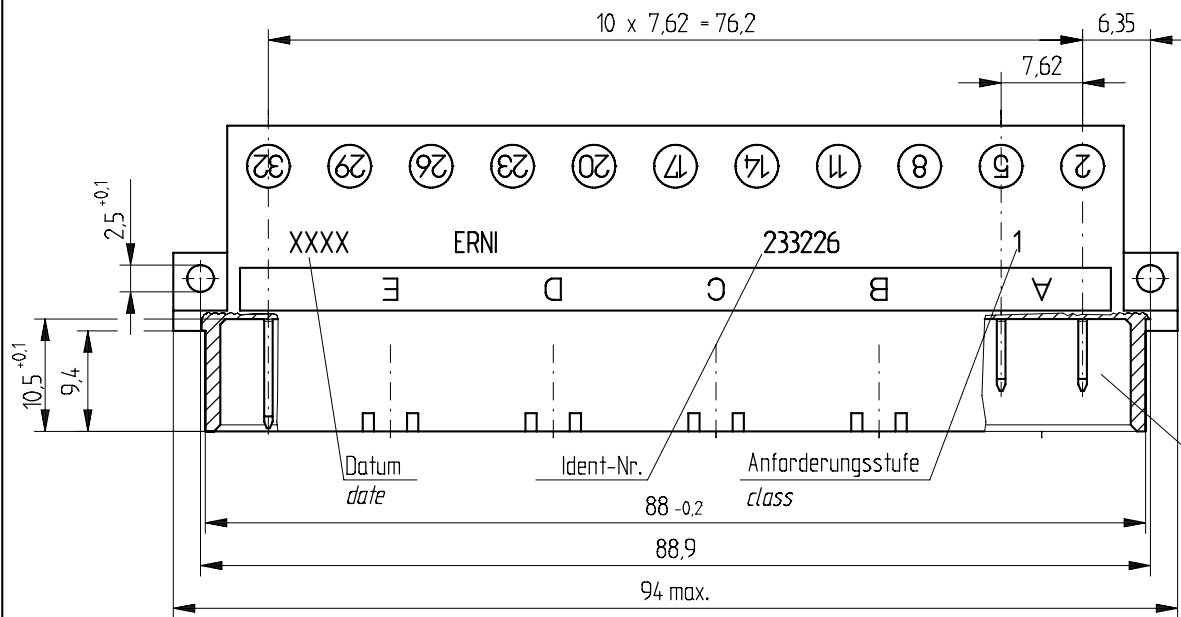


Stecklänge / mating length



E = early mate, late break / voreilend
S = standard



Stecklänge
mating length

Flachstecker 6,3 x 0,8 mm / Slip-on tabs 6,3 x 0,8 mm

Isolierwerkstoff / housing material : PC GF30

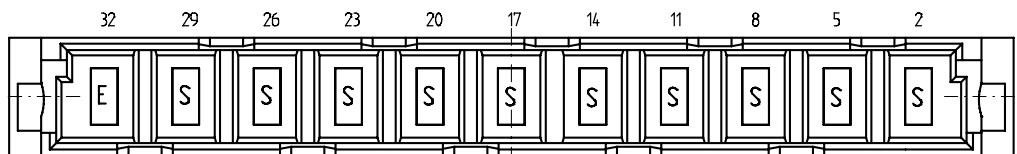
Bauart 3 / type 3

Anforderungsstufe 1 = 500 Steckzyklen / performance class 1 = 500 mating cycles

Fehlende Maße und Angaben gemäß IEC 60 603-2 / DIN EN 60 603-2

Missing information and dimensions according to IEC 60 603-2

Bestückungsplan / contact layout



Consider protection memo from DIN 34

| | | | | | |
|--|--|--|--|--|-----|
| Information: | | Tolerances | | Scale | 2:1 |
| All rights reserved. Only for information. To insure that this is the latest version of this drawing, please contact one of the ERNI companies before using. | | Subject to modification without prior notice. Drawing will not be updated. | | Designation | |
| | | www.ERNI.com | | Messerleiste H 11 Male Connector H 11 | |
| | | 27.11.2006 | | 233226 | |
| Date | | V:00059913.SZA | | STVH11 | |