

Title	AK4352
Size	A3
Number	
Date	7/27/1988
Filename	AK4352A.SCH
Sheet	1 of 1
Rev	A

D1 1S1588
 D2 PR4553K
 D3 PR4553K
 D4 DIR
 C1 0.1u
 C2 0.01u
 C3 0.1u
 C4 47u
 C5 0.01u
 C6 10u
 C7 10u
 C8 0.1u
 C9 1k
 C10 47n
 C11 0.1u
 C12 0.1u
 C13 0.1u
 C14 0.1u
 C15 0.1u
 C16 47u
 C17 47u
 C18 0.1u
 C19 0.1u
 C20 0.1u
 C21 10u
 C22 10u
 C23 0.1u
 C24 0.1u
 C25 0.1u
 C26 0.1u
 C27 0.1u
 C28 10u
 C29 47u
 C30 1.5n
 C31 1.5n
 C32 47u
 C33 220p
 C34 220p
 C35 0.1u
 C36 10u
 C37 10u
 C38 0.1u
 C39 0.1u
 C40 0.1u
 C41 10u
 C42 10u
 C43 0.1u
 C44 0.1u
 C45 0.1u
 C46 10u
 C47 10u
 C48 10u
 C49 0.1u
 C50 0.1u
 C51 0.1u
 C52 0.1u
 C53 0.1u
 C54 0.1u
 C55 0.1u
 C56 0.1u
 C57 0.1u
 C58 0.1u
 C59 0.1u
 C60 0.1u
 C61 0.1u
 C62 0.1u
 C63 0.1u
 C64 0.1u
 C65 0.1u
 C66 0.1u
 C67 0.1u
 C68 0.1u
 C69 0.1u
 C70 0.1u
 C71 0.1u
 C72 0.1u
 C73 0.1u
 C74 0.1u
 C75 0.1u
 C76 0.1u
 C77 0.1u
 C78 0.1u
 C79 0.1u
 C80 0.1u
 C81 0.1u
 C82 0.1u
 C83 0.1u
 C84 0.1u
 C85 0.1u
 C86 0.1u
 C87 0.1u
 C88 0.1u
 C89 0.1u
 C90 0.1u
 C91 0.1u
 C92 0.1u
 C93 0.1u
 C94 0.1u
 C95 0.1u
 C96 0.1u
 C97 0.1u
 C98 0.1u
 C99 0.1u
 C100 0.1u
 R1 1k
 R2 1k
 R3 10k
 R4 10k
 R5 1k
 R6 1k
 R7 1k
 R8 1k
 R9 51
 R10 1M
 R11 10k
 R12 10k
 R13 10k
 R14 10k
 R15 10k
 R16 10k
 R17 27k
 R18 27k
 R19 220
 R20 4.7k
 R21 4.7k
 R22 220
 R23 4.7k
 R24 4.7k
 R25 4.7k
 R26 4.7k
 R27 4.7k
 R28 4.7k
 R29 4.7k
 R30 4.7k
 R31 4.7k
 R32 4.7k
 R33 4.7k
 R34 4.7k
 R35 4.7k
 R36 4.7k
 R37 4.7k
 R38 4.7k
 R39 4.7k
 R40 4.7k
 R41 4.7k
 R42 4.7k
 R43 4.7k
 R44 4.7k
 R45 4.7k
 R46 4.7k
 R47 4.7k
 R48 4.7k
 R49 4.7k
 R50 4.7k
 R51 4.7k
 R52 4.7k
 R53 4.7k
 R54 4.7k
 R55 4.7k
 R56 4.7k
 R57 4.7k
 R58 4.7k
 R59 4.7k
 R60 4.7k
 R61 4.7k
 R62 4.7k
 R63 4.7k
 R64 4.7k
 R65 4.7k
 R66 4.7k
 R67 4.7k
 R68 4.7k
 R69 4.7k
 R70 4.7k
 R71 4.7k
 R72 4.7k
 R73 4.7k
 R74 4.7k
 R75 4.7k
 R76 4.7k
 R77 4.7k
 R78 4.7k
 R79 4.7k
 R80 4.7k
 R81 4.7k
 R82 4.7k
 R83 4.7k
 R84 4.7k
 R85 4.7k
 R86 4.7k
 R87 4.7k
 R88 4.7k
 R89 4.7k
 R90 4.7k
 R91 4.7k
 R92 4.7k
 R93 4.7k
 R94 4.7k
 R95 4.7k
 R96 4.7k
 R97 4.7k
 R98 4.7k
 R99 4.7k
 R100 4.7k
 U1:A 74HC14
 U1:B 74HC14
 U2 74HC14
 U3 74HC14
 U4:A 74HC04
 U4:B 74HC04
 U4:C 74HC04
 U4:D 74HC04
 U5 74LVC541
 U6 74HC4040
 U7 AK4352
 U8:1 NJM2115D
 U8:2 NJM2115D
 X1 11.2896MHz
 SW1 PD
 SW2 DIR
 SW3 BICK
 SW4 MCLK
 SW5 LRCK
 SW6 DIF1
 SW7 DIF2
 SW8 DIF3
 SW9 DIF4
 SW10 DIF5
 SW11 DIF6
 SW12 DIF7
 SW13 DIF8
 SW14 DIF9
 SW15 DIF10
 SW16 DIF11
 SW17 DIF12
 SW18 DIF13
 SW19 DIF14
 SW20 DIF15
 SW21 DIF16
 SW22 DIF17
 SW23 DIF18
 SW24 DIF19
 SW25 DIF20
 SW26 DIF21
 SW27 DIF22
 SW28 DIF23
 SW29 DIF24
 SW30 DIF25
 SW31 DIF26
 SW32 DIF27
 SW33 DIF28
 SW34 DIF29
 SW35 DIF30
 SW36 DIF31
 SW37 DIF32
 SW38 DIF33
 SW39 DIF34
 SW40 DIF35
 SW41 DIF36
 SW42 DIF37
 SW43 DIF38
 SW44 DIF39
 SW45 DIF40
 SW46 DIF41
 SW47 DIF42
 SW48 DIF43
 SW49 DIF44
 SW50 DIF45
 SW51 DIF46
 SW52 DIF47
 SW53 DIF48
 SW54 DIF49
 SW55 DIF50
 SW56 DIF51
 SW57 DIF52
 SW58 DIF53
 SW59 DIF54
 SW60 DIF55
 SW61 DIF56
 SW62 DIF57
 SW63 DIF58
 SW64 DIF59
 SW65 DIF60
 SW66 DIF61
 SW67 DIF62
 SW68 DIF63
 SW69 DIF64
 SW70 DIF65
 SW71 DIF66
 SW72 DIF67
 SW73 DIF68
 SW74 DIF69
 SW75 DIF70
 SW76 DIF71
 SW77 DIF72
 SW78 DIF73
 SW79 DIF74
 SW80 DIF75
 SW81 DIF76
 SW82 DIF77
 SW83 DIF78
 SW84 DIF79
 SW85 DIF80
 SW86 DIF81
 SW87 DIF82
 SW88 DIF83
 SW89 DIF84
 SW90 DIF85
 SW91 DIF86
 SW92 DIF87
 SW93 DIF88
 SW94 DIF89
 SW95 DIF90
 SW96 DIF91
 SW97 DIF92
 SW98 DIF93
 SW99 DIF94
 SW100 DIF95
 SW101 DIF96
 SW102 DIF97
 SW103 DIF98
 SW104 DIF99
 SW105 DIF100
 SW106 DIF101
 SW107 DIF102
 SW108 DIF103
 SW109 DIF104
 SW110 DIF105
 SW111 DIF106
 SW112 DIF107
 SW113 DIF108
 SW114 DIF109
 SW115 DIF110
 SW116 DIF111
 SW117 DIF112
 SW118 DIF113
 SW119 DIF114
 SW120 DIF115
 SW121 DIF116
 SW122 DIF117
 SW123 DIF118
 SW124 DIF119
 SW125 DIF120
 SW126 DIF121
 SW127 DIF122
 SW128 DIF123
 SW129 DIF124
 SW130 DIF125
 SW131 DIF126
 SW132 DIF127
 SW133 DIF128
 SW134 DIF129
 SW135 DIF130
 SW136 DIF131
 SW137 DIF132
 SW138 DIF133
 SW139 DIF134
 SW140 DIF135
 SW141 DIF136
 SW142 DIF137
 SW143 DIF138
 SW144 DIF139
 SW145 DIF140
 SW146 DIF141
 SW147 DIF142
 SW148 DIF143
 SW149 DIF144
 SW150 DIF145
 SW151 DIF146
 SW152 DIF147
 SW153 DIF148
 SW154 DIF149
 SW155 DIF150
 SW156 DIF151
 SW157 DIF152
 SW158 DIF153
 SW159 DIF154
 SW160 DIF155
 SW161 DIF156
 SW162 DIF157
 SW163 DIF158
 SW164 DIF159
 SW165 DIF160
 SW166 DIF161
 SW167 DIF162
 SW168 DIF163
 SW169 DIF164
 SW170 DIF165
 SW171 DIF166
 SW172 DIF167
 SW173 DIF168
 SW174 DIF169
 SW175 DIF170
 SW176 DIF171
 SW177 DIF172
 SW178 DIF173
 SW179 DIF174
 SW180 DIF175
 SW181 DIF176
 SW182 DIF177
 SW183 DIF178
 SW184 DIF179
 SW185 DIF180
 SW186 DIF181
 SW187 DIF182
 SW188 DIF183
 SW189 DIF184
 SW190 DIF185
 SW191 DIF186
 SW192 DIF187
 SW193 DIF188
 SW194 DIF189
 SW195 DIF190
 SW196 DIF191
 SW197 DIF192
 SW198 DIF193
 SW199 DIF194
 SW200 DIF195
 SW201 DIF196
 SW202 DIF197
 SW203 DIF198
 SW204 DIF199
 SW205 DIF200
 SW206 DIF201
 SW207 DIF202
 SW208 DIF203
 SW209 DIF204
 SW210 DIF205
 SW211 DIF206
 SW212 DIF207
 SW213 DIF208
 SW214 DIF209
 SW215 DIF210
 SW216 DIF211
 SW217 DIF212
 SW218 DIF213
 SW219 DIF214
 SW220 DIF215
 SW221 DIF216
 SW222 DIF217
 SW223 DIF218
 SW224 DIF219
 SW225 DIF220
 SW226 DIF221
 SW227 DIF222
 SW228 DIF223
 SW229 DIF224
 SW230 DIF225
 SW231 DIF226
 SW232 DIF227
 SW233 DIF228
 SW234 DIF229
 SW235 DIF230
 SW236 DIF231
 SW237 DIF232
 SW238 DIF233
 SW239 DIF234
 SW240 DIF235
 SW241 DIF236
 SW242 DIF237
 SW243 DIF238
 SW244 DIF239
 SW245 DIF240
 SW246 DIF241
 SW247 DIF242
 SW248 DIF243
 SW249 DIF244
 SW250 DIF245
 SW251 DIF246
 SW252 DIF247
 SW253 DIF248
 SW254 DIF249
 SW255 DIF250
 SW256 DIF251
 SW257 DIF252
 SW258 DIF253
 SW259 DIF254
 SW260 DIF255
 SW261 DIF256
 SW262 DIF257
 SW263 DIF258
 SW264 DIF259
 SW265 DIF260
 SW266 DIF261
 SW267 DIF262
 SW268 DIF263
 SW269 DIF264
 SW270 DIF265
 SW271 DIF266
 SW272 DIF267
 SW273 DIF268
 SW274 DIF269
 SW275 DIF270
 SW276 DIF271
 SW277 DIF272
 SW278 DIF273
 SW279 DIF274
 SW280 DIF275
 SW281 DIF276
 SW282 DIF277
 SW283 DIF278
 SW284 DIF279
 SW285 DIF280
 SW286 DIF281
 SW287 DIF282
 SW288 DIF283
 SW289 DIF284
 SW290 DIF285
 SW291 DIF286
 SW292 DIF287
 SW293 DIF288
 SW294 DIF289
 SW295 DIF290
 SW296 DIF291
 SW297 DIF292
 SW298 DIF293
 SW299 DIF294
 SW300 DIF295
 SW301 DIF296
 SW302 DIF297
 SW303 DIF298
 SW304 DIF299
 SW305 DIF300
 SW306 DIF301
 SW307 DIF302
 SW308 DIF303
 SW309 DIF304
 SW310 DIF305
 SW311 DIF306
 SW312 DIF307
 SW313 DIF308
 SW314 DIF309
 SW315 DIF310
 SW316 DIF311
 SW317 DIF312
 SW318 DIF313
 SW319 DIF314
 SW320 DIF315
 SW321 DIF316
 SW322 DIF317
 SW323 DIF318
 SW324 DIF319
 SW325 DIF320
 SW326 DIF321
 SW327 DIF322
 SW328 DIF323
 SW329 DIF324
 SW330 DIF325
 SW331 DIF326
 SW332 DIF327
 SW333 DIF328
 SW334 DIF329
 SW335 DIF330
 SW336 DIF331
 SW337 DIF332
 SW338 DIF333
 SW339 DIF334
 SW340 DIF335
 SW341 DIF336
 SW342 DIF337
 SW343 DIF338
 SW344 DIF339
 SW345 DIF340
 SW346 DIF341
 SW347 DIF342
 SW348 DIF343
 SW349 DIF344
 SW350 DIF345
 SW351 DIF346
 SW352 DIF347
 SW353 DIF348
 SW354 DIF349
 SW355 DIF350
 SW356 DIF351
 SW357 DIF352
 SW358 DIF353
 SW359 DIF354
 SW360 DIF355
 SW361 DIF356
 SW362 DIF357
 SW363 DIF358
 SW364 DIF359
 SW365 DIF360
 SW366 DIF361
 SW367 DIF362
 SW368 DIF363
 SW369 DIF364
 SW370 DIF365
 SW371 DIF366
 SW372 DIF367
 SW373 DIF368
 SW374 DIF369
 SW375 DIF370
 SW376 DIF371
 SW377 DIF372
 SW378 DIF373
 SW379 DIF374
 SW380 DIF375
 SW381 DIF376
 SW382 DIF377
 SW383 DIF378
 SW384 DIF379
 SW385 DIF380
 SW386 DIF381
 SW387 DIF382
 SW388 DIF383
 SW389 DIF384
 SW390 DIF385
 SW391 DIF386
 SW392 DIF387
 SW393 DIF388
 SW394 DIF389
 SW395 DIF390
 SW396 DIF391
 SW397 DIF392
 SW398 DIF393
 SW399 DIF394
 SW400 DIF395
 SW401 DIF396
 SW402 DIF397
 SW403 DIF398
 SW404 DIF399
 SW405 DIF400
 SW406 DIF401
 SW407 DIF402
 SW408 DIF403
 SW409 DIF404
 SW410 DIF405
 SW411 DIF406
 SW412 DIF407
 SW413 DIF408
 SW414 DIF409
 SW415 DIF410
 SW416 DIF411
 SW417 DIF412
 SW418 DIF413
 SW419 DIF414
 SW420 DIF415
 SW421 DIF416
 SW422 DIF417
 SW423 DIF418
 SW424 DIF419
 SW425 DIF420
 SW426 DIF421
 SW427 DIF422
 SW428 DIF423
 SW429 DIF424
 SW430 DIF425
 SW431 DIF426
 SW432 DIF427
 SW433 DIF428
 SW434 DIF429
 SW435 DIF430
 SW436 DIF431
 SW437 DIF432
 SW438 DIF433
 SW439 DIF434
 SW440 DIF435
 SW441 DIF436
 SW442 DIF437
 SW443 DIF438
 SW444 DIF439
 SW445 DIF440
 SW446 DIF441
 SW447 DIF442
 SW448 DIF443
 SW449 DIF444
 SW450 DIF445
 SW451 DIF446
 SW452 DIF447
 SW453 DIF448
 SW454 DIF449
 SW455 DIF450
 SW456 DIF451
 SW457 DIF452
 SW458 DIF453
 SW459 DIF454
 SW460 DIF455
 SW461 DIF456
 SW462 DIF457
 SW463 DIF458
 SW464 DIF459
 SW465 DIF460
 SW466 DIF461
 SW467 DIF462
 SW468 DIF463
 SW469 DIF464
 SW470 DIF465
 SW471 DIF466
 SW472 DIF467
 SW473 DIF468
 SW474 DIF469
 SW475 DIF470
 SW476 DIF471
 SW477 DIF472
 SW478 DIF473
 SW479 DIF474
 SW480 DIF475
 SW481 DIF476
 SW482 DIF477
 SW483 DIF478
 SW484 DIF479
 SW485 DIF480
 SW486 DIF481
 SW487 DIF482
 SW488 DIF483
 SW489 DIF484
 SW490 DIF485
 SW491 DIF486
 SW492 DIF487
 SW493 DIF488
 SW494 DIF489
 SW495 DIF490
 SW496 DIF491
 SW497 DIF492
 SW498 DIF493
 SW499 DIF494
 SW500 DIF495
 SW501 DIF496
 SW502 DIF497
 SW503 DIF498
 SW504 DIF499
 SW505 DIF500
 SW506 DIF501
 SW507 DIF502
 SW508 DIF503
 SW509 DIF504
 SW510 DIF505
 SW511 DIF506
 SW512 DIF507
 SW513 DIF508
 SW514 DIF509
 SW515 DIF510
 SW516 DIF511
 SW517 DIF512
 SW518 DIF513
 SW519 DIF514
 SW520 DIF515
 SW521 DIF516
 SW522 DIF517
 SW523 DIF518
 SW524 DIF519
 SW525 DIF520
 SW526 DIF521
 SW527 DIF522
 SW528 DIF523
 SW529 DIF524
 SW530 DIF525
 SW531 DIF526
 SW532 DIF527
 SW533 DIF528
 SW534 DIF529
 SW535 DIF530
 SW536 DIF531
 SW537 DIF532
 SW538 DIF533
 SW539 DIF534
 SW540 DIF535
 SW541 DIF536
 SW542 DIF537
 SW543 DIF538
 SW544 DIF539
 SW545 DIF540
 SW546 DIF541
 SW547 DIF542
 SW548 DIF543
 SW549 DIF544
 SW550 DIF545
 SW551 DIF546
 SW552 DIF547
 SW553 DIF548
 SW554 DIF549
 SW555 DIF550
 SW556 DIF551
 SW557 DIF552
 SW558 DIF553
 SW559 DIF554
 SW560 DIF555
 SW561 DIF556
 SW562 DIF557
 SW563 DIF558
 SW564 DIF559
 SW565 DIF560
 SW566 DIF561
 SW567 DIF562
 SW568 DIF563
 SW569 DIF564
 SW570 DIF565
 SW571 DIF566
 SW572 DIF567
 SW573 DIF568
 SW574 DIF569
 SW575 DIF570
 SW576 DIF571
 SW577 DIF572
 SW578 DIF573
 SW579 DIF574
 SW580 DIF575
 SW581 DIF576
 SW582 DIF577
 SW583 DIF578
 SW584 DIF579
 SW585 DIF580
 SW586 DIF581
 SW587 DIF582
 SW588 DIF583
 SW589 DIF584
 SW590 DIF585
 SW591 DIF586
 SW592 DIF587
 SW593 DIF588
 SW594 DIF589
 SW595 DIF590
 SW596 DIF591
 SW597 DIF592
 SW598 DIF593
 SW599 DIF594
 SW600 DIF595
 SW601 DIF596
 SW602 DIF597
 SW603 DIF598
 SW604 DIF599
 SW605 DIF600
 SW606 DIF601
 SW607 DIF602
 SW608 DIF603
 SW609 DIF604
 SW610 DIF605
 SW611 DIF606
 SW612 DIF607
 SW613 DIF608
 SW614 DIF609
 SW615 DIF610
 SW616 DIF611
 SW617 DIF612
 SW618 DIF613
 SW619 DIF614
 SW620 DIF615
 SW621 DIF616
 SW622 DIF617
 SW623 DIF618
 SW624 DIF619
 SW625 DIF620
 SW626 DIF621
 SW627 DIF622
 SW628 DIF623
 SW629 DIF624
 SW630 DIF625
 SW631 DIF626
 SW632 DIF627
 SW633 DIF628
 SW634 DIF629
 SW635 DIF630
 SW636 DIF631
 SW637 DIF632
 SW638 DIF633
 SW639 DIF634
 SW640 DIF635
 SW641 DIF636
 SW642 DIF637
 SW643 DIF638
 SW644 DIF639
 SW645 DIF640
 SW646 DIF641
 SW647 DIF642
 SW648 DIF643
 SW649 DIF644
 SW650 DIF645
 SW651 DIF646
 SW652 DIF647
 SW653 DIF648
 SW654 DIF649
 SW655 DIF650
 SW656 DIF651
 SW657 DIF652
 SW658 DIF653
 SW659 DIF654
 SW660 DIF655
 SW661 DIF656
 SW662 DIF657
 SW663 DIF658
 SW664 DIF659
 SW665 DIF660
 SW666 DIF661
 SW667 DIF662
 SW668 DIF663
 SW669 DIF664
 SW670 DIF665
 SW671 DIF666
 SW672 DIF667
 SW673 DIF668
 SW674 DIF669
 SW675 DIF670
 SW676 DIF671
 SW677 DIF672
 SW678 DIF673
 SW679 DIF674
 SW680 DIF675
 SW681 DIF676
 SW682 DIF677
 SW683 DIF678
 SW684 DIF679
 SW685 DIF680
 SW686 DIF681
 SW687 DIF682
 SW688 DIF683
 SW689 DIF684
 SW690 DIF685
 SW691 DIF686
 SW692 DIF687
 SW693 DIF688
 SW694 DIF689
 SW695 DIF690
 SW696 DIF691
 SW697 DIF692
 SW698 DIF693
 SW699 DIF694
 SW700 DIF695
 SW701 DIF696
 SW702 DIF697
 SW703 DIF698
 SW704 DIF699
 SW705 DIF700
 SW706

■ Analog Output

Analog signals are output through BNC connectors on the board and the output level are typically 1.1Vpp (@ VREF=2.0V). When the attenuation of the out-band noise is needed, the 2nd order LPF($f_c=27.7\text{kHz}$, $Q=0.87$) with inverted-amp(Gain:0dB) on the board should be used(JP11,12=Op-Amp).

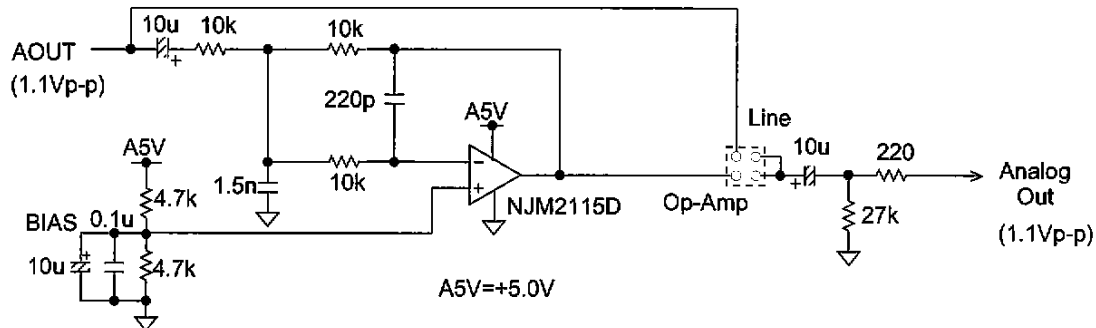


Fig.2 on-board analog filter

■ Grounding and Power Supply Decoupling

Decoupling capacitors should be connected to AK4352 as near as possible. Especially the capacitor between VDD and VSS should be connected nearest.

■ Operation Sequence

- ① Set up the power supply lines.
 $D5V=A5V= 5.0V$,
 $D2V=A2V= 2.0V$,
 $AGND=DGND=0V$.

Each supply line should be distributed from the power supply unit.

- ② Set up the evaluation modes and jumper pins.
(See the next item)
- ③ Set up the DIP-SW.
(See the next item)
- ④ Power on.
- ⑤ Reset the AK4352 by SW1.

(The AK4352 is reset by SW1: PD = "L" during operation.)

■ Set-up of the evaluation modes and jumper pins

1. Evaluation modes

Applicable evaluation modes

- ① DIR (Optical Link) (default)
- ② Using ROM data(AK43XX)
- ③ Using AKM's evaluation board for ADC
- ④ Feeding all signals from external

① DIR (Optical Link)

PORT1 is used. All clock are supplied from CS8412 (DIR). DIR generates MCLK, BICK, LRCK and SDATA from the received data through optical connector(TORX174). Used for the evaluation using CD test disk. Nothing should be connected to PORT2.

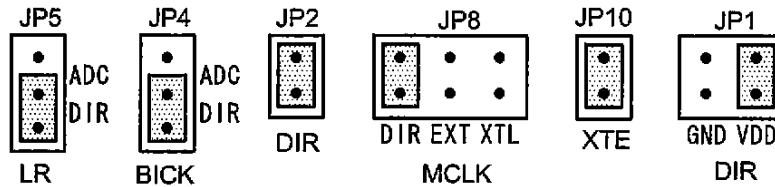


Fig.3 DIR

② Using ROM data(AK43XX)

Connect the AK43XX with PORT2.

AKD4352 sends MCLK to AKD43XX, and receives LRCK,BICK and SDATA.

※ In case of using external master clock through a BNC connector, set JP8(MCLK) EXT and short JP10(XTE).

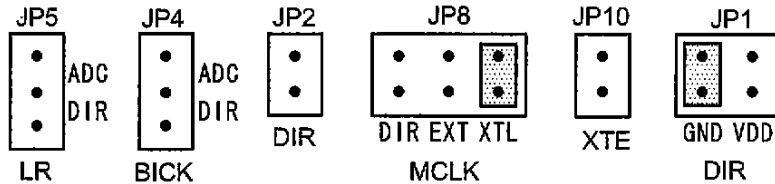


Fig.4 ROM data

③ Using AKM's evaluation board for ADC

To evaluate AK4352 with analog input, The AKM's evaluation board for ADC can be used.

MCLK, BICK and LRCK are supplied from clock generator on the AKD4352, and analog signal is A/D converted and send to AKD4352 through PORT2.

※ In case of using external master clock through a BNC connector, set JP8(MCLK) EXT and short JP10(XTE).

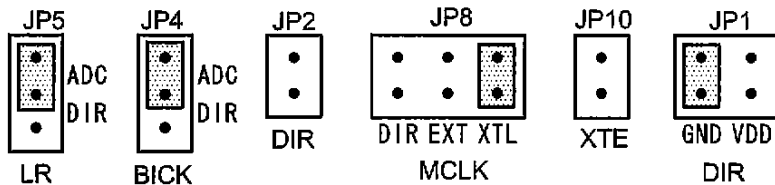


Fig.5 A/D data

④ Feeding all signals from external

Under the following set-up, all external signals could be fed through PORT2.

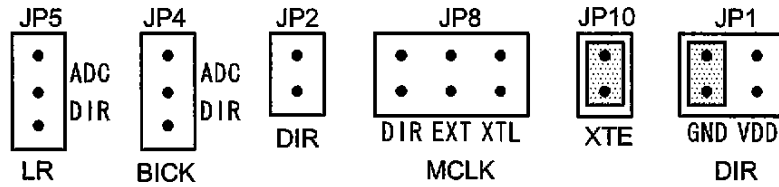
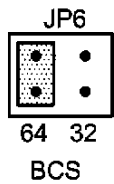


Fig.6 External signal

2. BICK frequency (JP6)



When BICK is fed from 74HC4040 on board, its frequency is selected with JP6.

- 64 : BICK = 64fs (Fig.7)
- 32 : BICK = 32fs

Fig.7

3. MCLK frequency (SW3-1)

Following the MCLK frequency, set up the SW3-1(CKS)

- MCLK = 256fs : CKS = OFF
- MCLK = 384fs : CKS = ON

※ In case of mode ① and ③, set SW3-1 OFF(256fs).

4. De-emphasis filter (SW3-4)

Set the De-emphasis filter of AK4352 with SW3-4(DEM).

5. Serial data format (SW3-2,3)

Set serial data format of AK4352 with SW3-2,3(DIF0,1).

※ In case of mode ①, adjust the data format between DIR and AK4352 with SW4.

Table 1 Serial data format of AK4352

DIF1	DIF0	Mode	BICK
0	0	16bit LSB justified	≥ 32fs
0	1	18bit LSB justified	≥ 36fs
1	0	18bit MSB justified	≥ 36fs
1	1	I ² S (IIS)	≥ 32fs or ≥ 36fs

6. CS8412(DIR) Set-up (SW4, JP3)

Set the data format of CS8412(DIR) with SW4 and JP3. This format must be fitted to AK4352, which is set with DIF0 and DIF1.

(For more detailed configurations, please refer to the CS8412 data-sheet.)

Table 2-1 (SW4)

No.	pin name	ON	OFF	
1	SEL	normally ON ※ 1		
2	M 3	see Table 2-2		
3	M 2			
4	M 1			
5	M 0			
6	CS12	Rch	Lch	※ 2

Table 2-2 CS8412 data format ※ 3

M 3	M 2	M 1	M 0	mode	JP3
0	0	0	0	0: 18bit MSB justified	INV
0	0	1	0	2: I ² S	THR
0	1	0	1	5: 16bit LSB justified	THR
0	1	1	0	6: 18bit LSB justified	THR

1:ON, 0:OFF

※ 1 When "ON", LED shows the pre-emphasis status.
(LED turns on when the data is pre-emphasized.)

※ 2 Select the channel whose set up of CS8412.

※ 3 JP3 fits the BICK phase of CS8412 to AK4352s.

■ Switch list

[SW1] Reset switch for AK4352. The reset state is "L".

[SW3] Set-up switch of CKS,DEM,DIF1,DIF0.

[SW4] Set-up switch of CS8412.

[D1] "Pre-emphasis"-monitor. LED turns on when the data is pre-emphasized.

[D2] "VERF pin"-monitor for the CS8412.

LED turns on when some error has occurred to CS8412.

AK4352 Measurement Results

■ No.1 (Audio Precision, System Two)

[Measurement condition]

- Measurement unit: Audio Precision, System Two (RMS mode)
- MCLK: 256fs
- BICK: 64fs
- Bit: 18bit
- fs: 44.148kHz
- Power Supply: D5V=5.0V, A2V=1.8/2.0/3.3/3.6V
- Interface: DIR
- temp: Room temp

1. D/A Output

-fs=44.1kHz

Parameter	Input signal	Measurement Filter	Results				
			1.8V	2.0V	3.0V	3.3V	3.6V
S/(N+D)	1kHz, 0dB	20kLPF	80.8dB	82.7dB	89.0dB	90.4dB	91.2dB
		22kLPF, A-weight	79.9dB	82.0dB	89.2dB	90.8dB	91.6dB
Dynamic Range	1kHz, -60dB	20kLPF	89.7dB	90.4dB	93.1dB	93.8dB	94.1dB
		22kLPF, A-weight	92.4dB	93.2dB	95.8dB	96.3dB	96.8dB
S/N	1kHz, 0dB/"0" data IN	20kLPF	90.2dB	91.2dB	94.8dB	95.5dB	96.2dB
		22kLPF, A-weight	93.2dB	94.1dB	97.5dB	98.3dB	99.0dB

2. D/A Output

-A2V=2.0V

Parameter	Input signal	Measurement Filter	Results		
			32kHz	44.1kHz	48kHz
S/(N+D)	1kHz, 0dB	20kLPF	83.0dB	82.3dB	81.3dB
		22kLPF	65.0dB	82.0dB	81.1dB
		30kLPF	53.8dB	76.8dB	78.9dB
		80kLPF	49.5dB	63.3dB	65.8dB
		500kLPF	48.3dB	57.3dB	58.8dB
		A-weight	66.1dB	80.6dB	80.1dB
		22kLPF, A-weight	78.7dB	81.4dB	80.4dB
Dynamic Range	1kHz, -60dB	20kLPF	90.5dB	90.8dB	90.8dB
		22kLPF	88.8dB	90.3dB	90.4dB
		30kLPF	79.1dB	86.1dB	87.2dB
		80kLPF	61.9dB	69.3dB	71.3dB
		500kLPF	54.6dB	59.8dB	61.3dB
		A-weight	87.1dB	91.7dB	92.4dB
		22kLPF, A-weight	93.3dB	93.6dB	93.6dB
S/N	1kHz, 0dB/"0" data IN	20kLPF	90.7dB	90.8dB	90.9dB
		22kLPF	88.9dB	90.4dB	90.5dB
		30kLPF	79.3dB	85.7dB	87.4dB
		80kLPF	62.2dB	68.7dB	71.5dB
		500kLPF	55.0dB	59.4dB	61.3dB
		A-weight	87.3dB	91.7dB	92.7dB
		22kLPF, A-weight	93.5dB	93.8dB	93.8dB

■ No.2 (Shibasoku AD725C)

[Measurement condition]

- Measurement unit: Shibasoku AD725C (RMS/AVG mode)
- MCLK: 256fs
- BICK: 64fs
- Bit: 18bit
- fs: 44.1kHz
- Power Supply: D5V=5.0V, A2V=2.0V
- Interface: DIR
- temp: Room temp

1. D/A Output

Parameter	Input signal	Measurement Filter	Results	
			RMS	AVG
S/(N+D)	1kHz, 0dB	20kLPF	83.3dB	83.5dB
Dynamic Range	1kHz, -10dB	20kLPF, A-weight	93.6dB	94.6dB
S/N	1kHz, 0dB/"0" data IN	20kLPF, A-weight	93.2dB	94.3dB

■ No.3 (ROHDE & SCHWARZ UPD)

[Measurement condition]

- Measurement unit: ROHDE & SCHWARZ UPD (RMS mode)
- MCLK: 256fs
- BICK: 64fs
- Bit: 18bit
- fs: 44.1kHz
- Power Supply: D5V=5.0V, A2V=2.0V
- Interface: DIR
- temp: Room temp

1. D/A Output

Parameter	Input signal	Measurement Filter	Results
S/(N+D)	1kHz, 0dB	20kLPF	82.3dB
Dynamic Range	1kHz, -60dB	20kLPF, A-weight	94.2dB
S/N	1kHz, 0dB/"0" data IN	20kLPF, A-weight	94.4dB

■ No.4 (Graph)

•[Common Measurement condition]

- Measurement unit: Audio Precision, System Two (RMS mode)
- MCLK: 256fs
- BICK: 64fs
- fs: 44.1kHz
- Power Supply: D5V=5.0V, A2V=2.0V
- Interface: DIR
- temp: Room temp

① THD+N vs. Input Level (Fig1)

- Measurement Filter: 20kHzLPF
- fin: 1kHz

② THD+N vs. Input Frequency (Fig2)

- Measurement Filter: 20kHzLPF
- Level: 0dB (Full Scale)

③ Linearity (Fig3)

- fin: 1kHz

④ Frequency Response(Fig4)

- Reference: 1kHz, 0dB

⑤ Crosstalk (Fig5)

⑥ FFT PLOT

- Point: 16384
- Average: 16
- Digital input data: 18bit
- fin: 1kHz
- Level: Out-of-band Noise (input "0" data, Fig6),
0dB (Full Scale, Fig7), -20dB (Fig8), -60dB (Fig9),
Noise floor (input "0" data, Fig10)

AKM

AK4352 THD+N vs. Input level

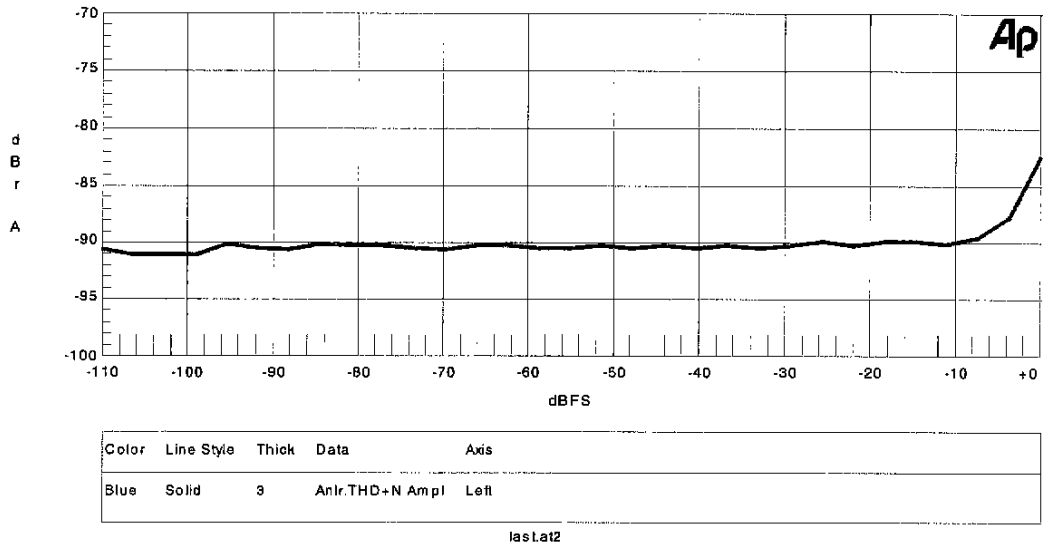


Fig1 : THD+N vs. Input level

AKM

AK4352 THD+N vs. Input frequency

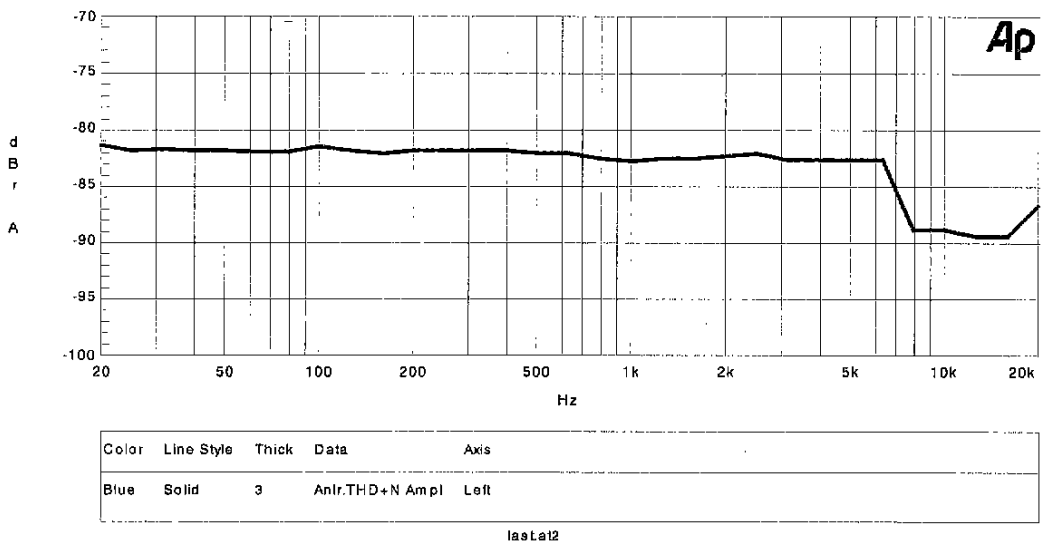


Fig2 : THD+N vs. Input Frequency

AKM

AK4352 Linearity

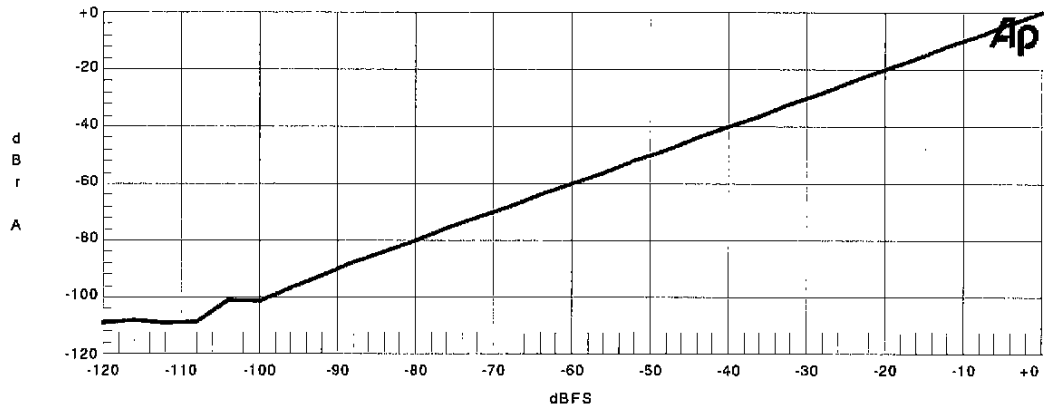


Fig3 : Linearity

AKM

AK4352 Frequency response

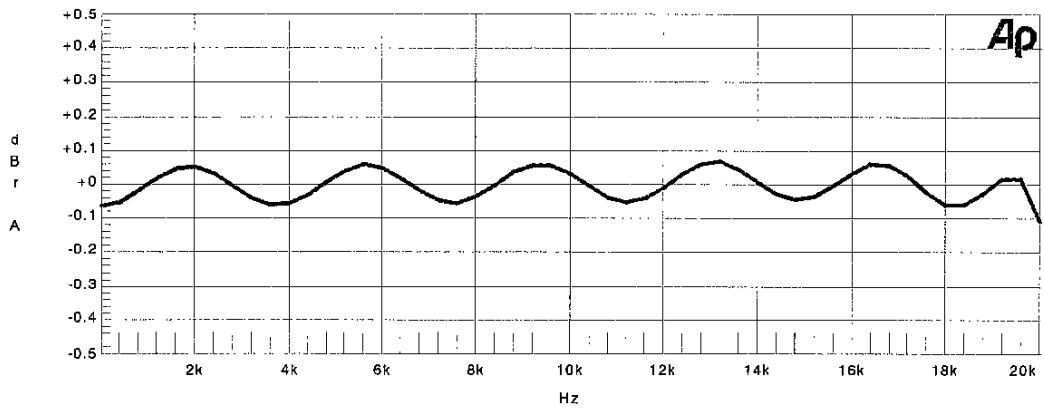
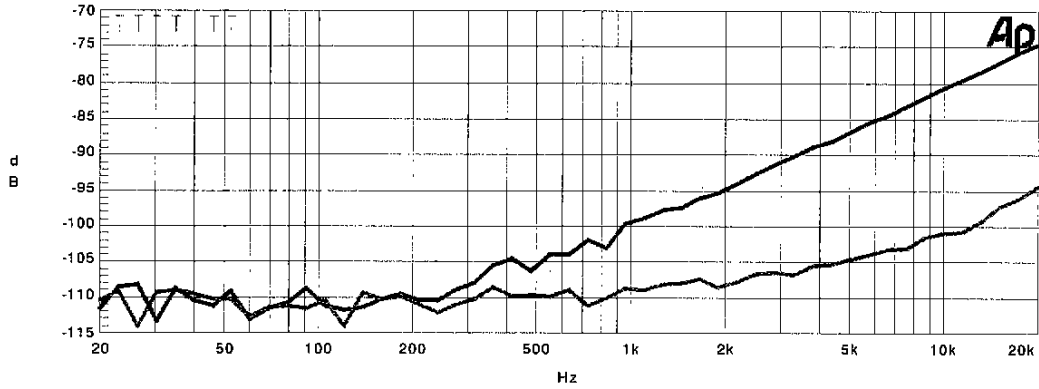


Fig4 : Frequency response

AKM

AK4352 Crosstalk



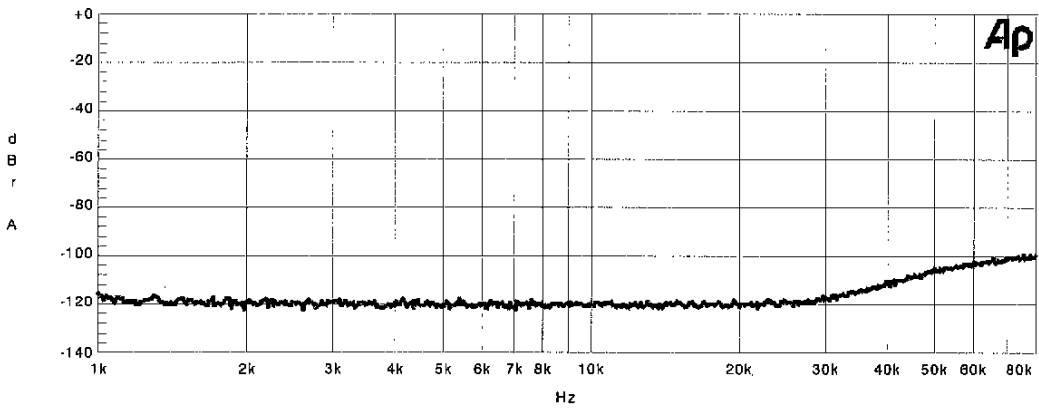
Color	Line Style	Thick	Data	Axis
Blue	Solid	3	AnIr.Crosstalk	Left
Magenta	Solid	3	AnIr.Crosstalk	Left

last.at2

Fig5 : Crosstalk

AKM

AK4352 FFT Plot (Input = "0" data, Out-Band-Noise)



Color	Line Style	Thick	Data	Axis
Blue	Solid	3	Fft.Ch.1 Ampl	Left

last.at2

Fig6 : FFT Plot(Out-of-band Noise, Input="0" data)

AKM

AK4352 FFT Plot (Input = 0dB)

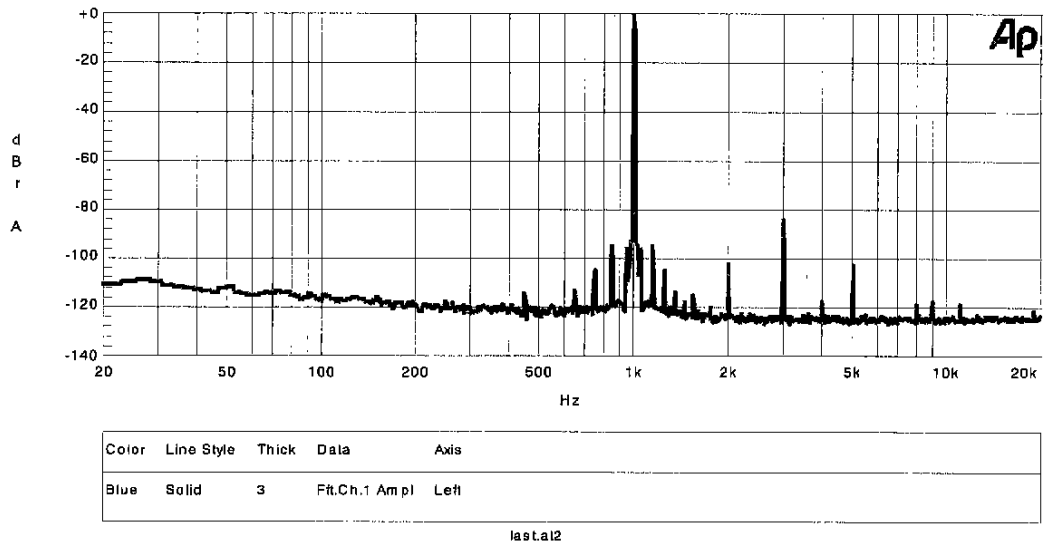


Fig7 : FFT Plot (Input=0dB)

AKM

AK4352 FFT Plot (Input = -20dB)

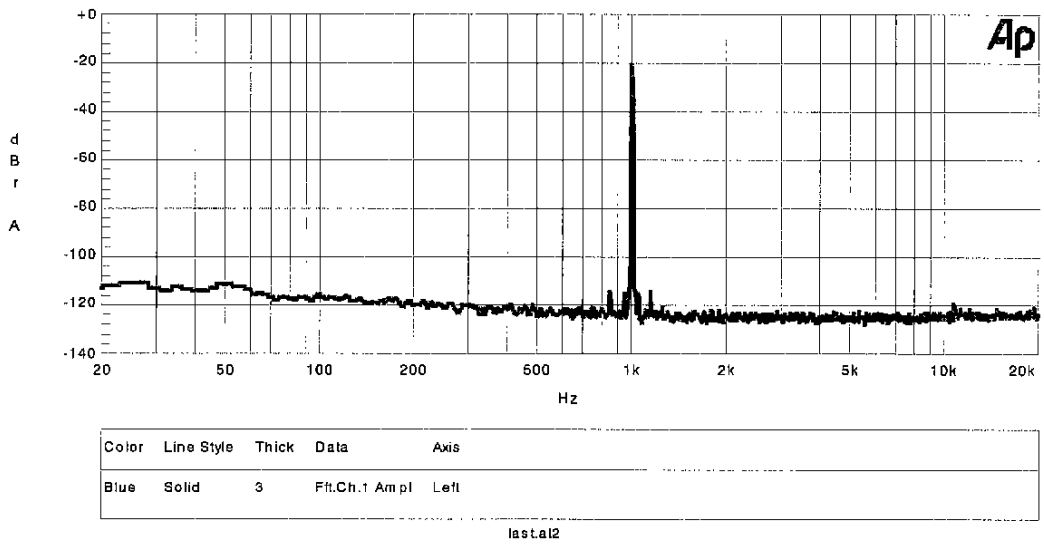


Fig8 : FFT Plot (Input=-20dB)

AKM

AK4352 FFT Plot (Input = -60dB)

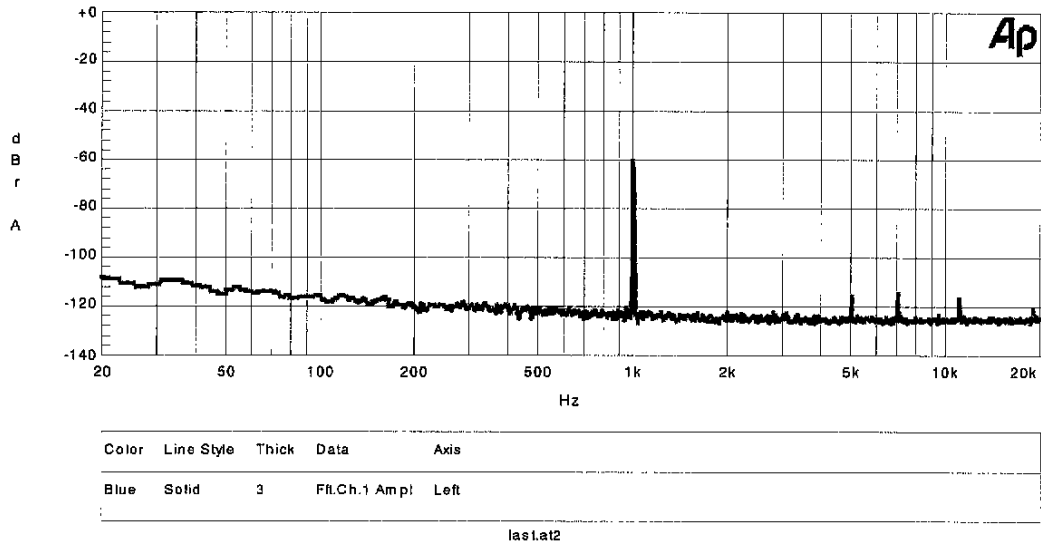


Fig9 : FFT Plot (Input=-60dB)

AKM

AK4352 FFT Plot (Input = "0" data)

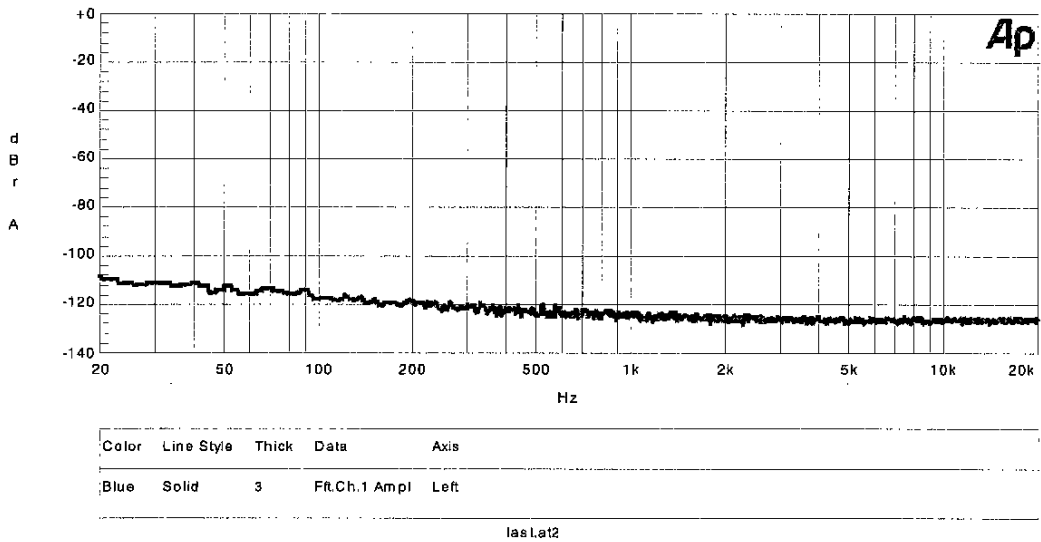
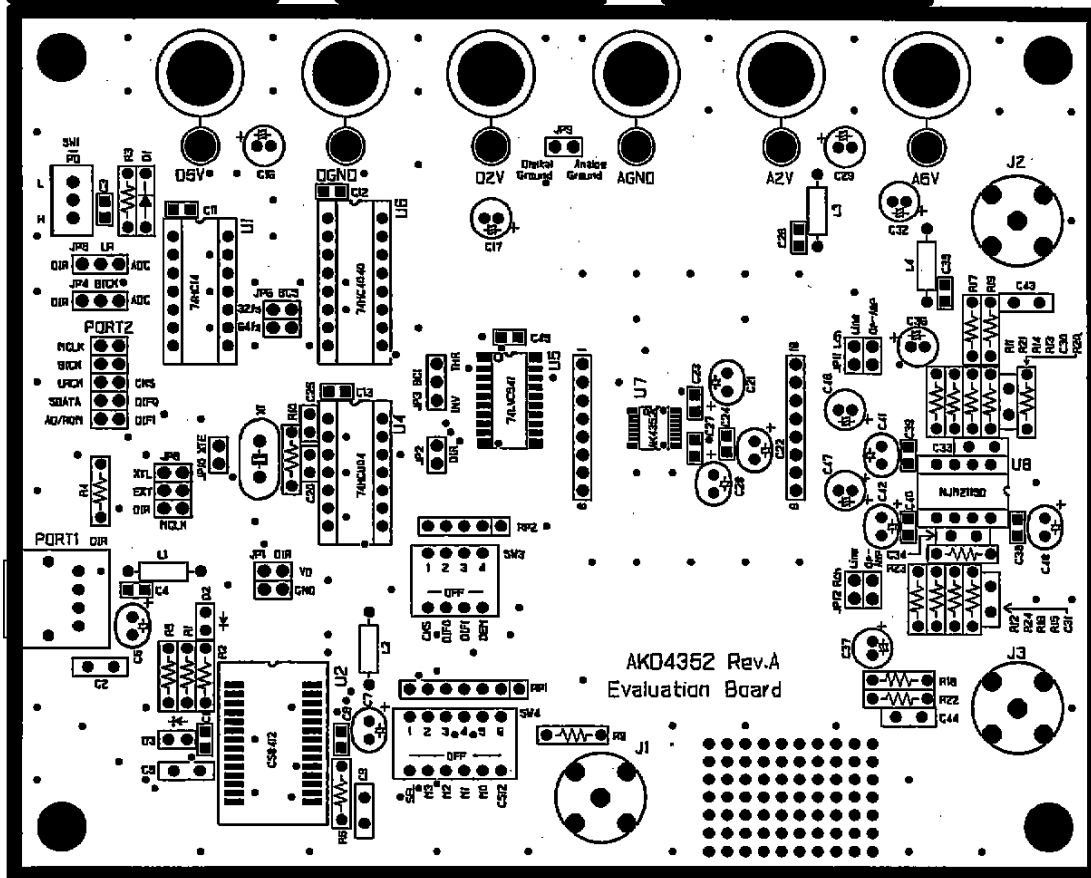
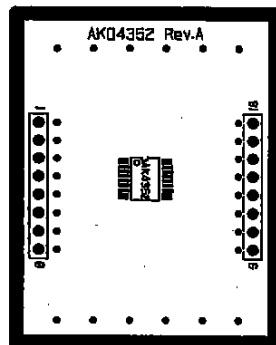
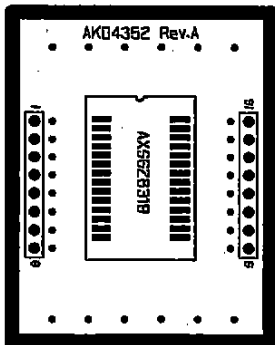
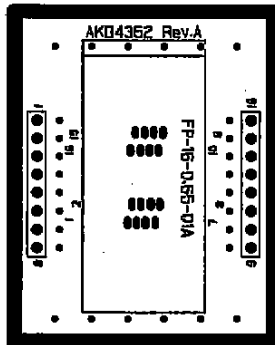
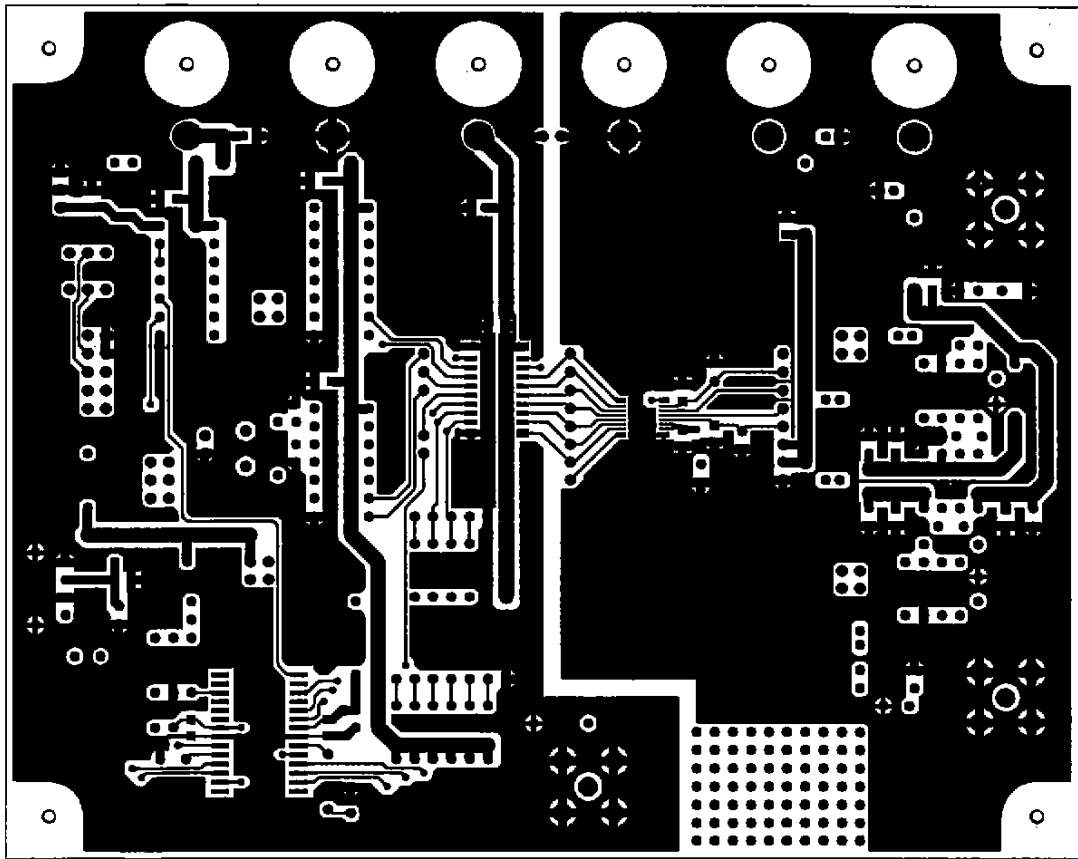
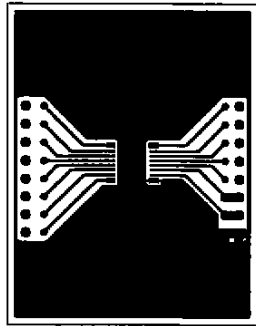
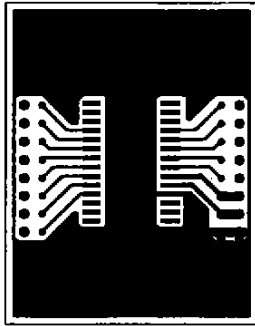
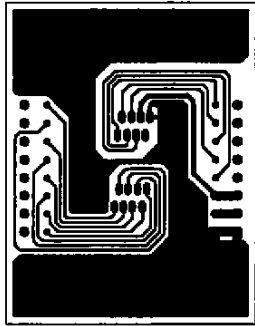
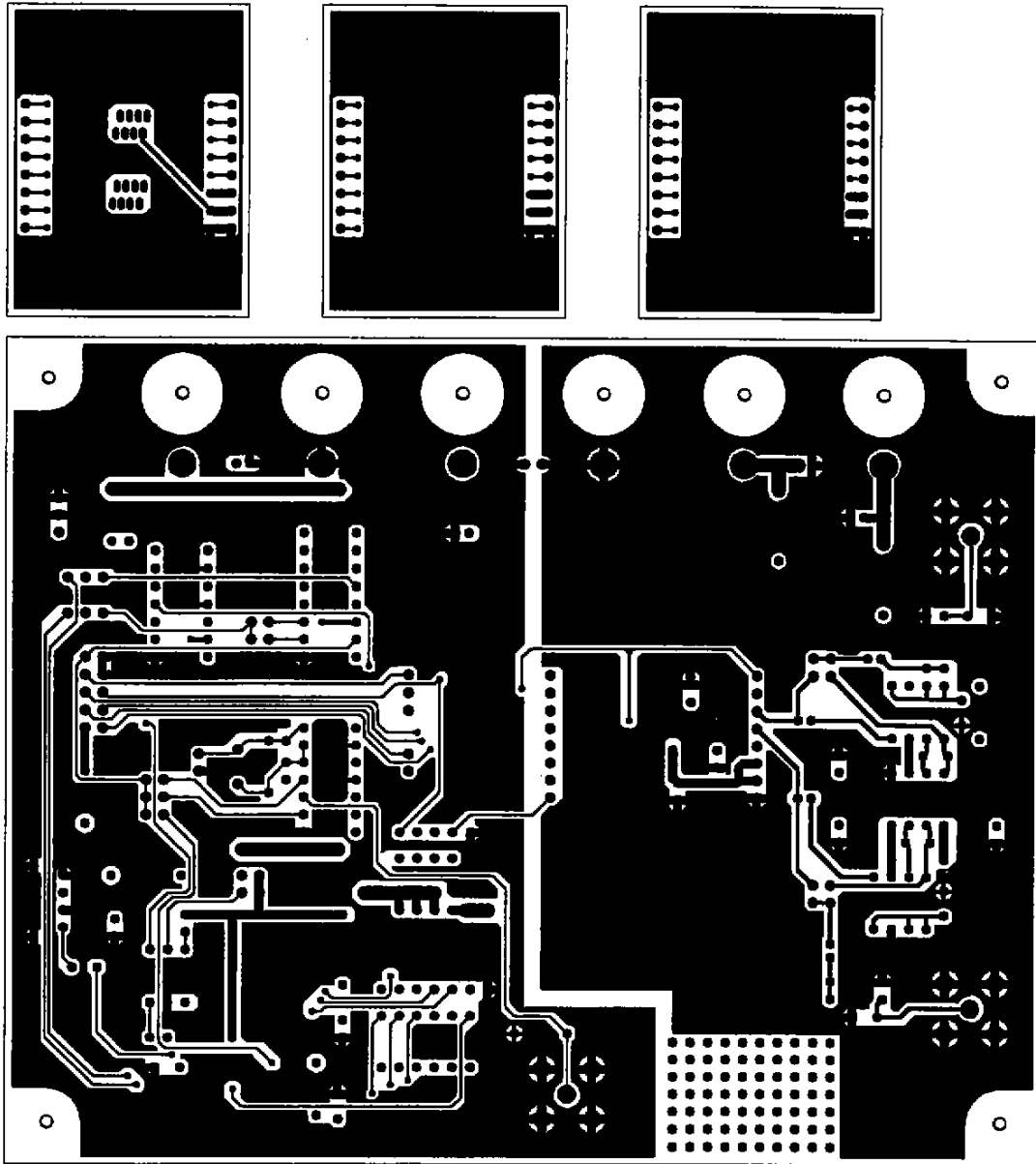


Fig10 : FFT Plot (Input="0" data)





LI 117-2 AKD4352



TS 1A-2 AKD432S