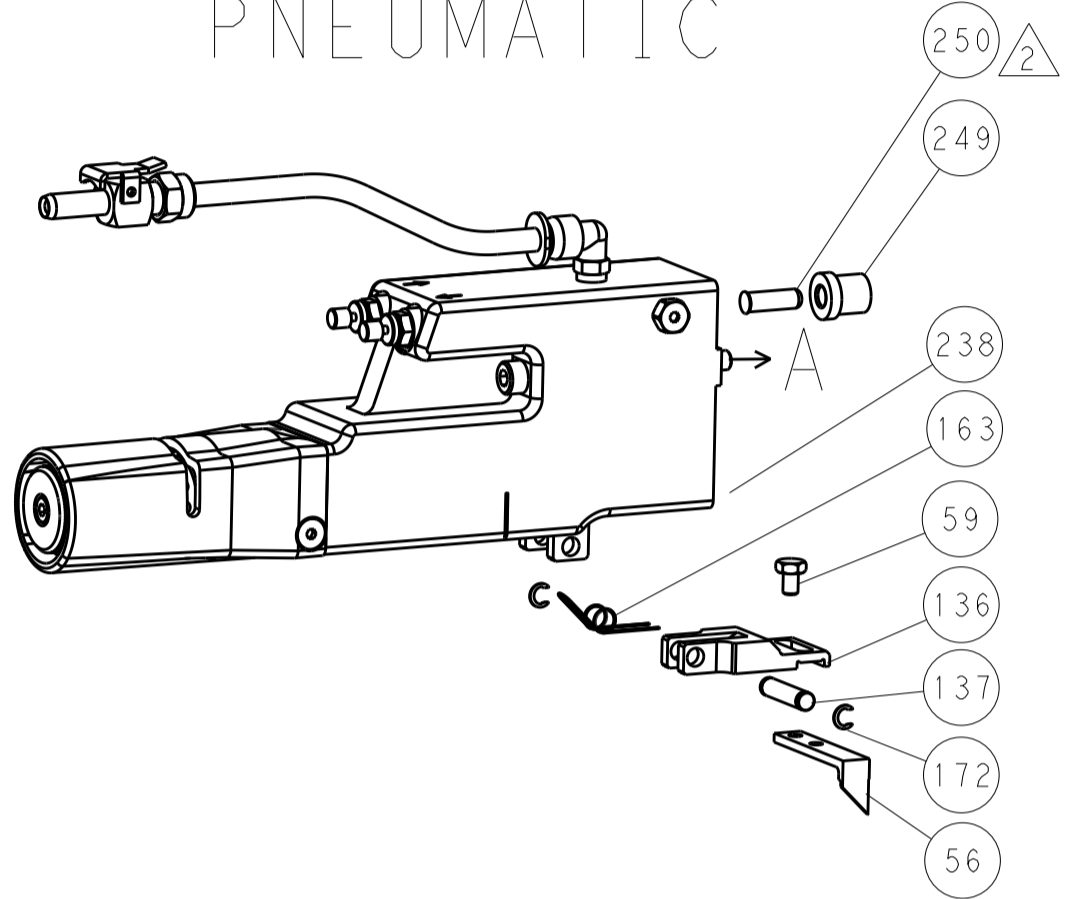


LOC		DIST		REVISIONS			
A	66	P	LTM	DESCRIPTION	DATE	OWN	APVD
		-		SEE SHEET 1			

FEED TYPE MECHANICAL



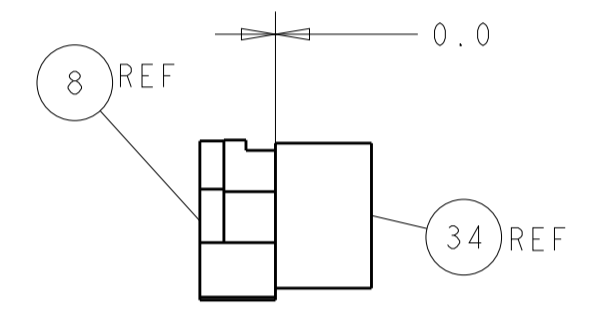
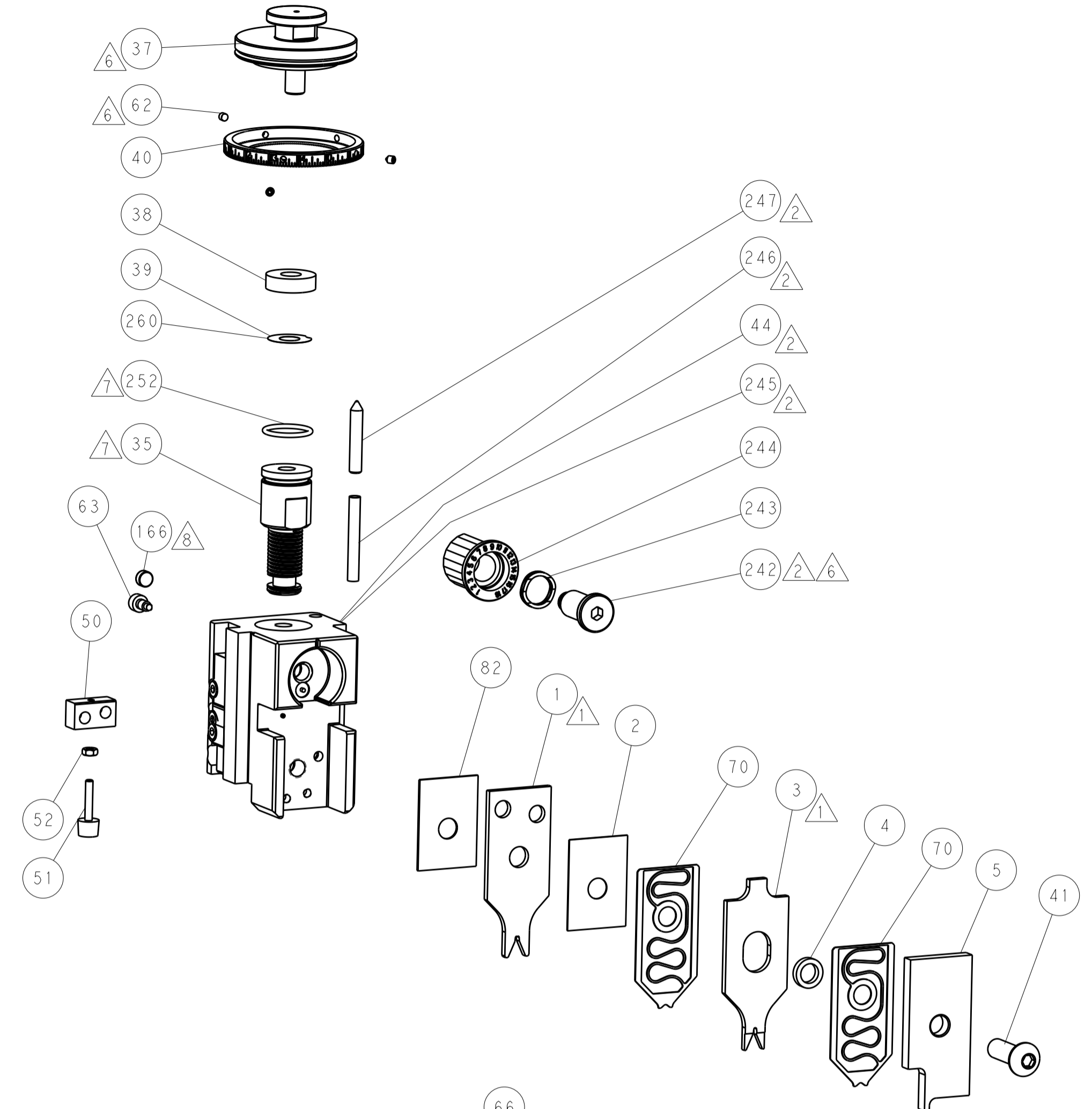
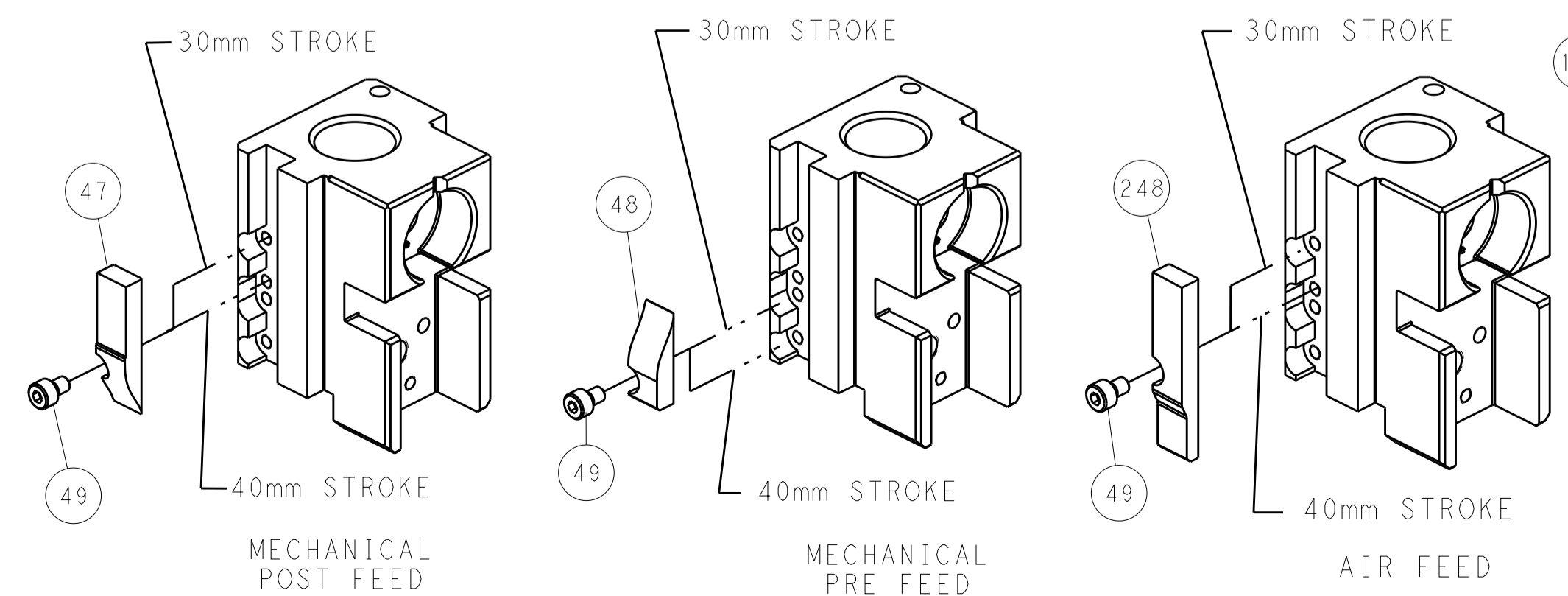
PNEUMATIC



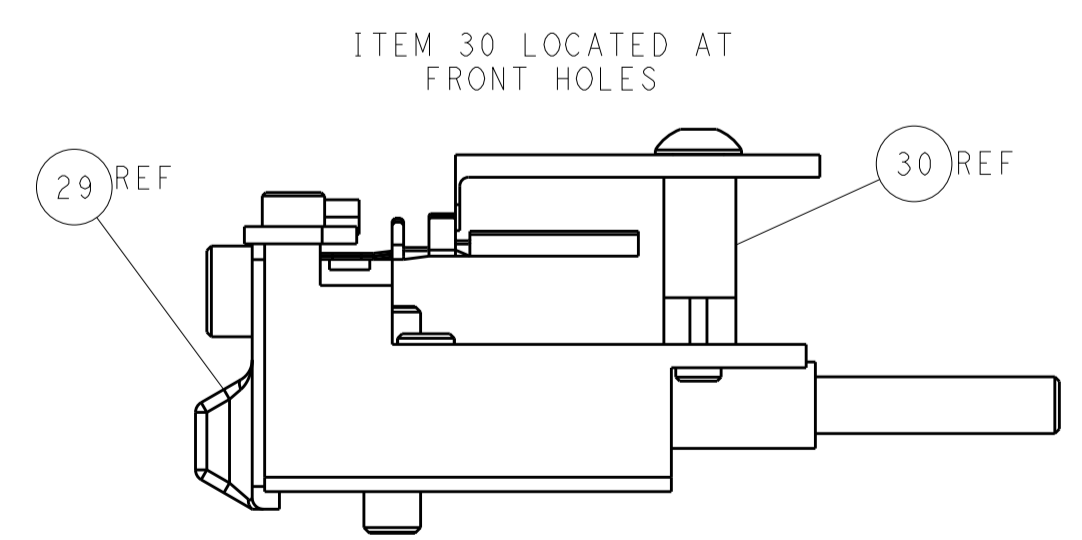
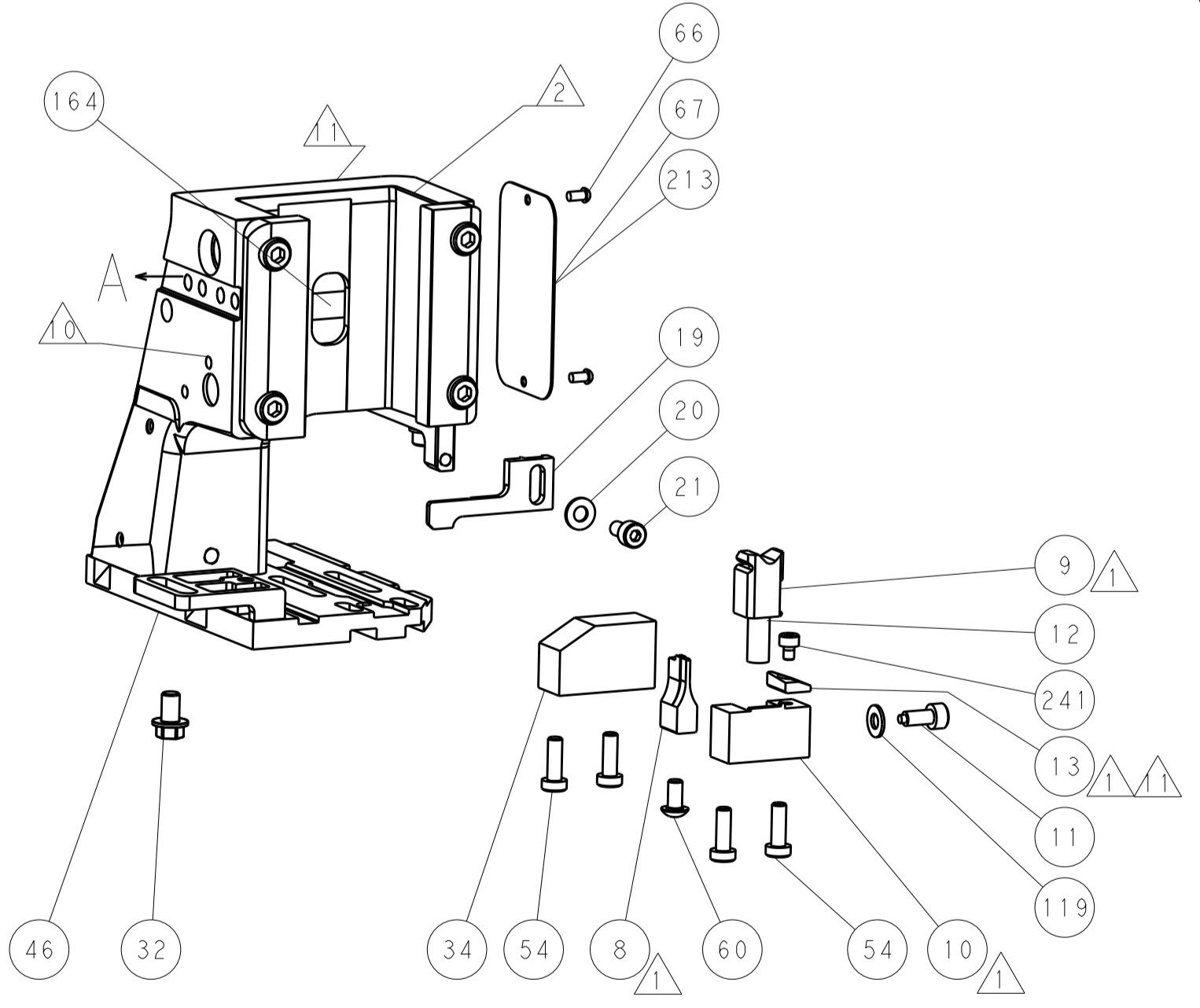
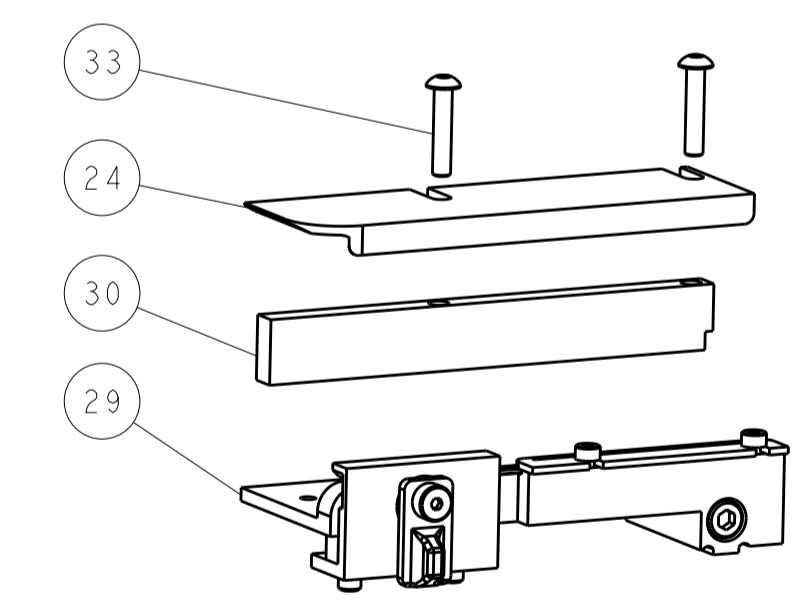
SERVO LATCH PLATE



CAM POSITIONS



TERMINAL SUPPORT LOCATION



ITEM 30 LOCATED AT FRONT HOLES

FEED TRACK POSITION GUIDE BY WIRE BARREL

ATLANTIC VERSION
 Shown on sheets 1 of 4 & 2 of 4
 (Pacific version shown on sheets 3 of 4 & 4 of 4)

DIMENSIONS:		TOLERANCES UNLESS OTHERWISE SPECIFIED:		OWN: R. KNEPPER 17-Oct-13		TE Connectivity	
mm	0 PLC	±		CHK: G. BAILEY 17-Oct-13	Harrisburg, PA 17105-3608		
	1 PLC	±		APVD: M. CLIFFORD 17-Oct-13	NAME: Ocean Side Feed Applicator		
	2 PLC	±			SIZE: CAGE CODE: DRAWING NO: A11 00779 ©=2266120		RESTRICTED TO
	3 PLC	±			WEIGHT: Customer Accessible Production Drawing		
	4 PLC	±			SCALE: 1:2 SHEET 2 OF 4 REV: C1		
	ANGLES	±					

Table with columns: LOC (A), DIST (66), P, LTM, DESCRIPTION, DATE, DWN, APVD.

Table with columns: PART NUMBER, REVISION, DESCRIPTION, FEED TYPE, CONVERT TO, PART NUMBERS REQUIRED.

Table with columns: CRIMP, SIZE, TYPE. Includes APPLICATOR INSTRUCTIONS 408-10389.

Table with columns: PART NUMBER, INSULATION DIAMETER RANGE.

Table with columns: TE TERMINAL, DEUTSCH TERMINAL. Includes terminal data and application specifications.

Table with columns: TE TERMINAL, DEUTSCH TERMINAL. Includes terminal data and application specifications.

Table with columns: WIRE SIZE, CRIMP HEIGHT mm [INCH], CRIMP HEIGHT REFERENCE SETTING.

- List of instructions and warnings including: RECOMMENDED SPARE PARTS, GREASE BEARING SURFACES LIGHTLY, LUBRICATE DAILY PER THE APPLICATOR INSTRUCTION SHEET...

*WARNING ON INSTALLATION, SET WIRE DISC, ITEM 40 TO LARGEST WIRE SIZE SETTING. USE OF SETTINGS BELOW MINIMUM REQUIRED CRIMP HEIGHT SETTING WILL CAUSE DAMAGE TO CRIMP TOOLING.

Table with columns: -78 -77 -27 -25 -22 -21, PART NO, DESCRIPTION, ITEM NO.

PACIFIC VERSION Shown on sheets 3 of 4 & 4 of 4 (Atlantic version shown on sheets 1 of 4 & 2 of 4)

Large table with columns: P, LTM, DESCRIPTION, DATE, DWN, APVD. Contains a list of parts and their quantities.

Technical drawing information including: DIMENSIONS, TOLERANCES UNLESS OTHERWISE SPECIFIED, MATERIAL, FINISH, WEIGHT, SCALE 1:2, SHEET 3 OF 4, REV C1.

LOC		DIST		REVISIONS			
A	66	P	LTM	DESCRIPTION	DATE	DMN	APVD
		-	-	SEE SHEET 1	-	-	-

FEED TYPE MECHANICAL



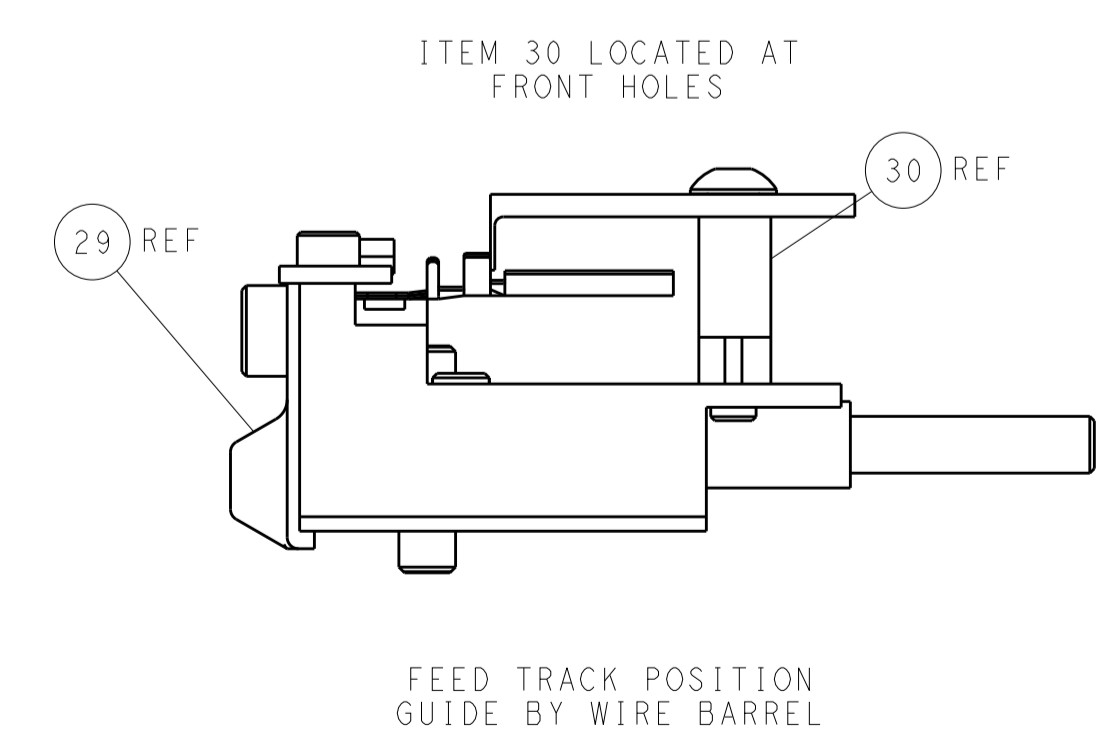
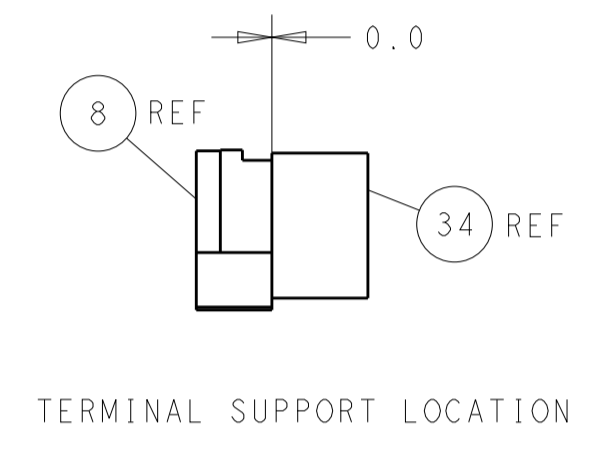
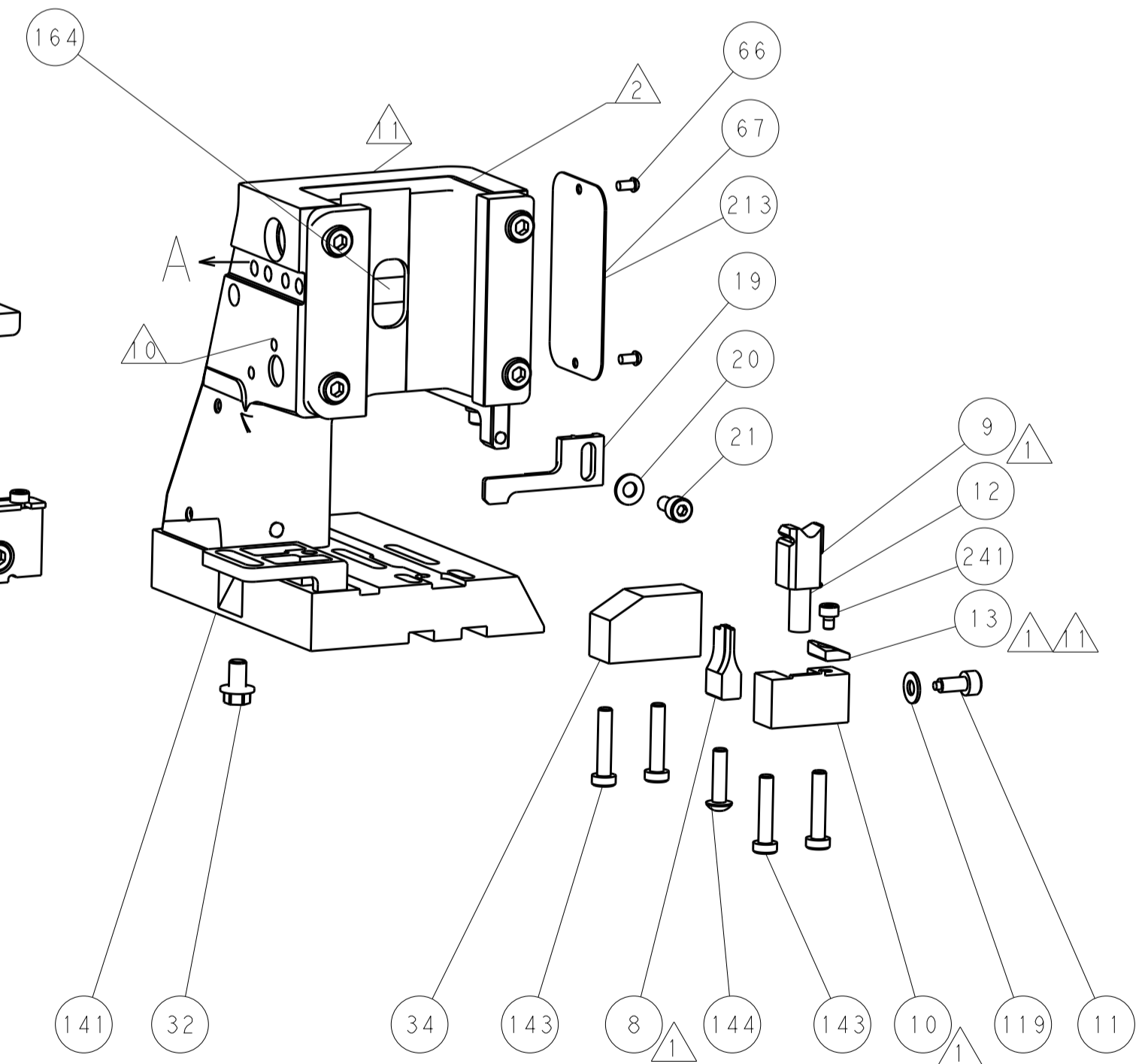
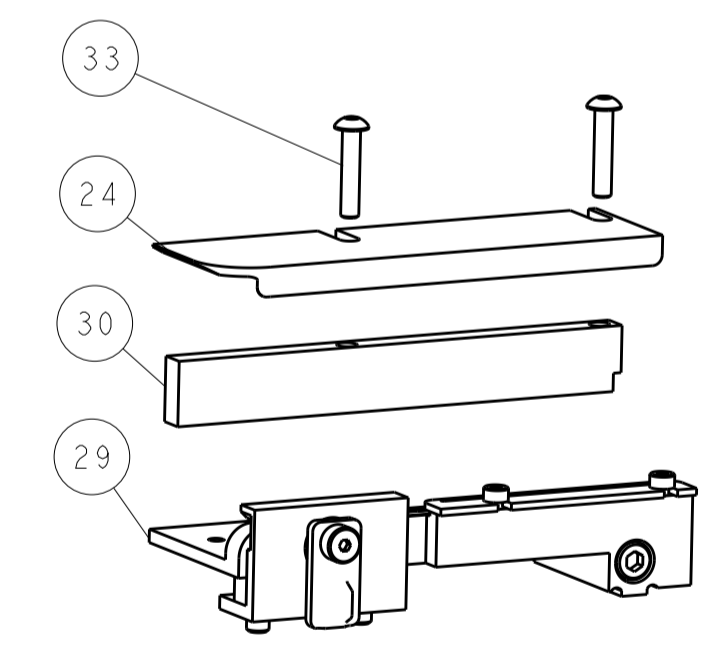
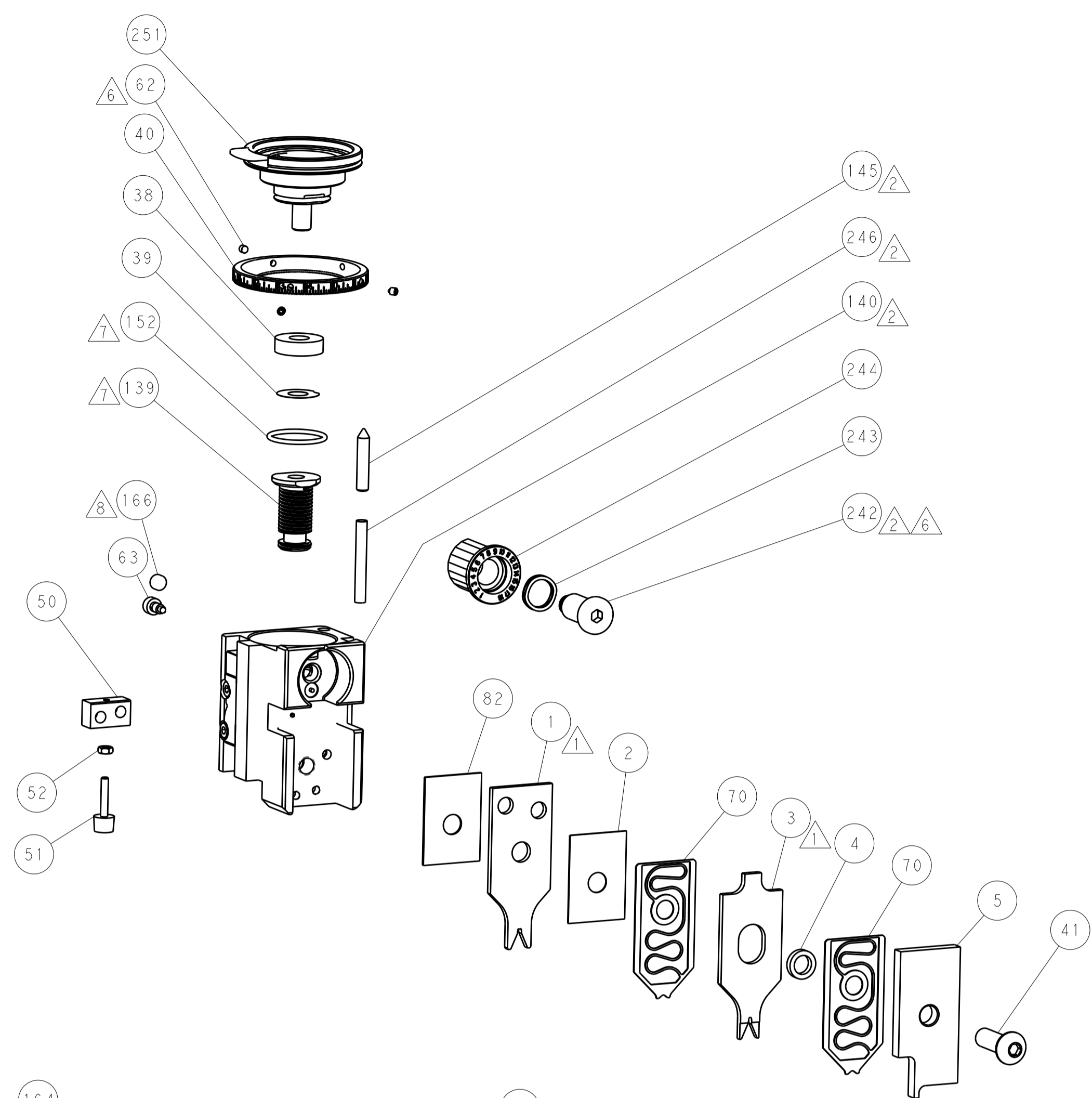
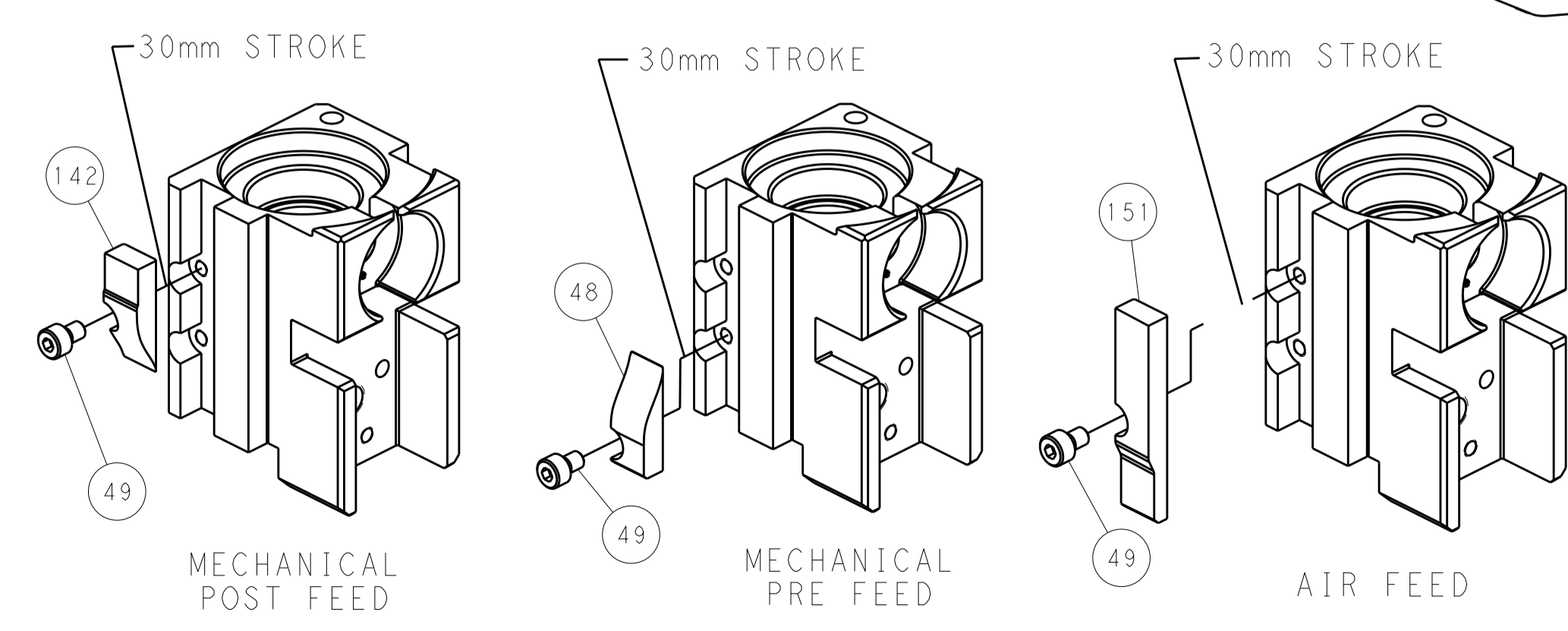
PNEUMATIC



SERVO LATCH PLATE



CAM POSITIONS



PACIFIC VERSION
 Shown on sheets 3 of 4 & 4 of 4
 (Atlantic version shown on sheets 1 of 4 & 2 of 4)

DIMENSIONS:		TOLERANCES UNLESS OTHERWISE SPECIFIED:		DWG: R. KNEPPER 17-Oct-13		REV: G. BAILEY 17-Oct-13		NAME: Ocean Side Feed Applicator	
mm	0 PLC	±		SIZE	CAGE CODE	DRAWING NO	RESTRICTED TO	STE TE Connectivity Harrisburg, PA 17105-3608	
	1 PLC	±		SCALE	00779	©=2266120		Customer Accessible Production Drawing	
	2 PLC	±		SCALE	1:2	SHEET 4 OF 4	REV C1		
	3 PLC	±							
	4 PLC	±							
	ANGLES	±							
MATERIAL	FINISH								