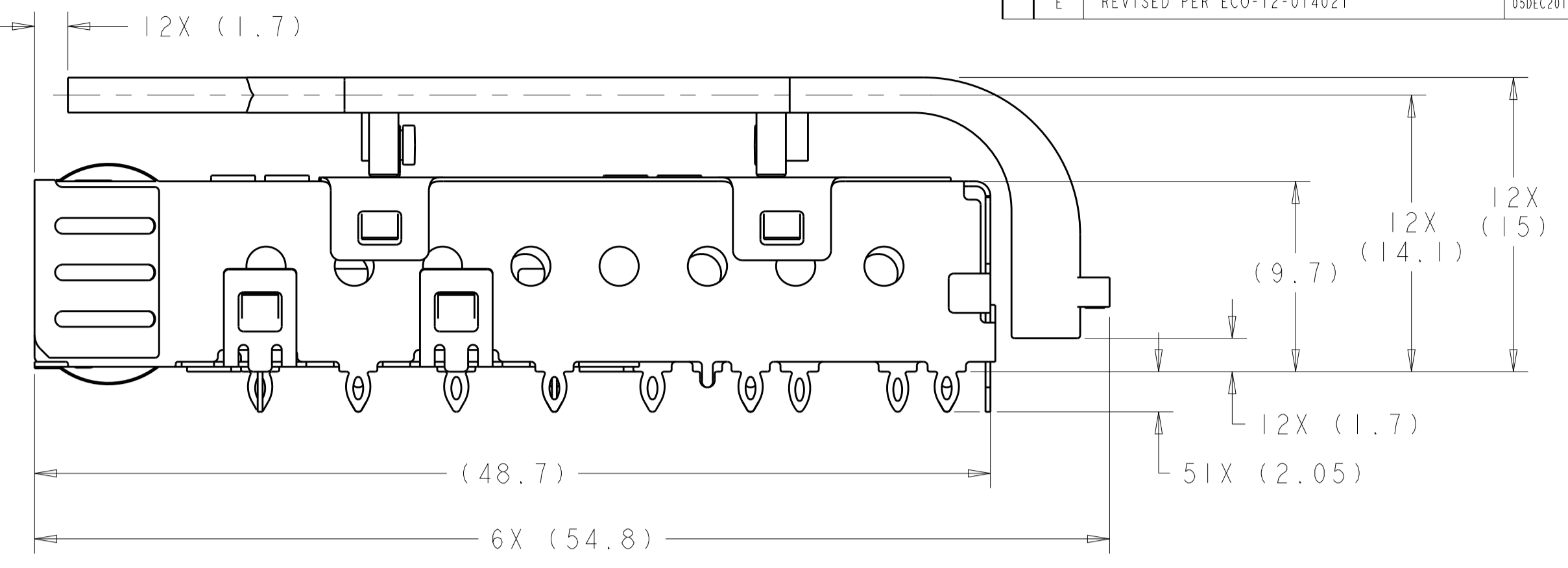
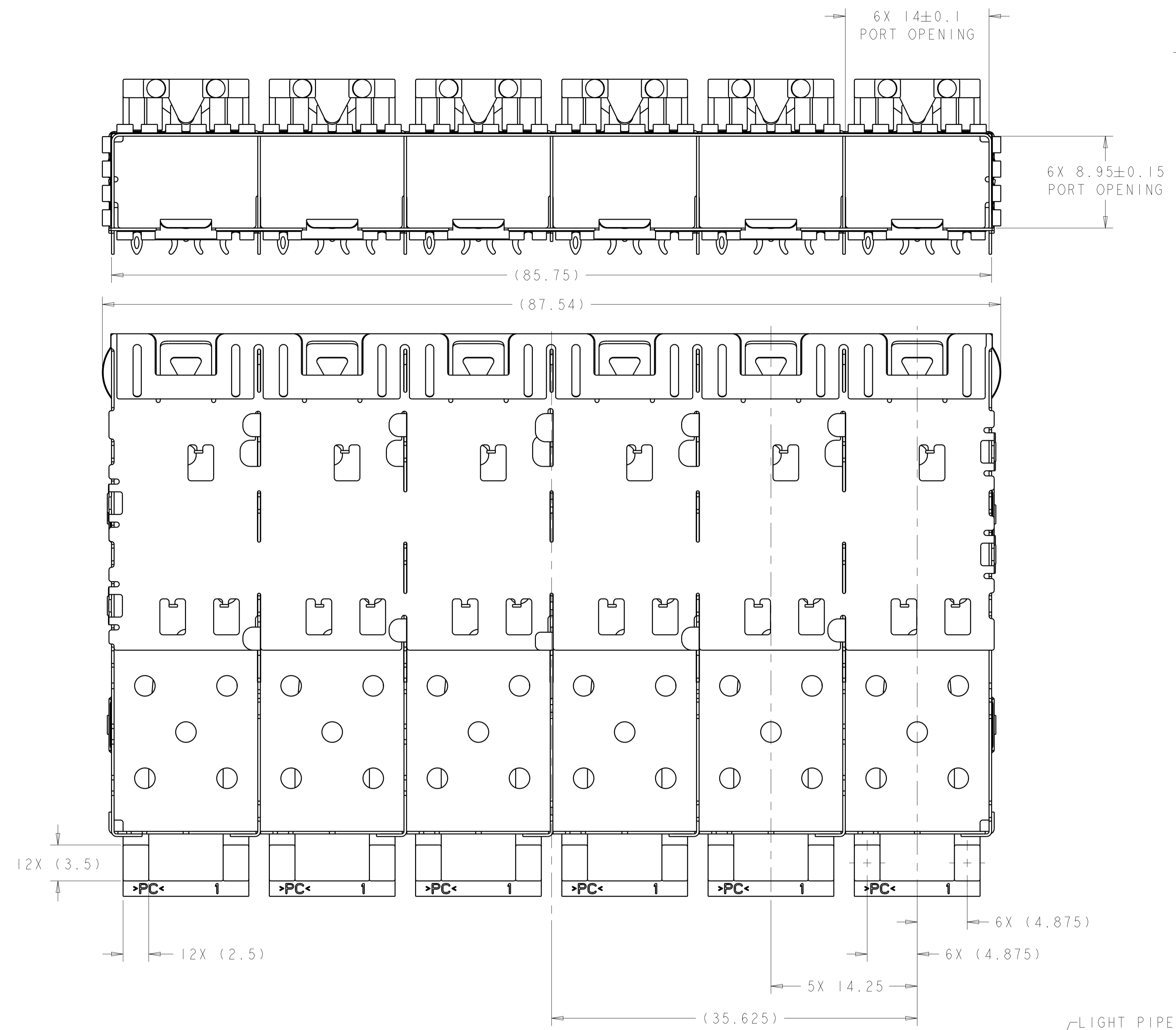
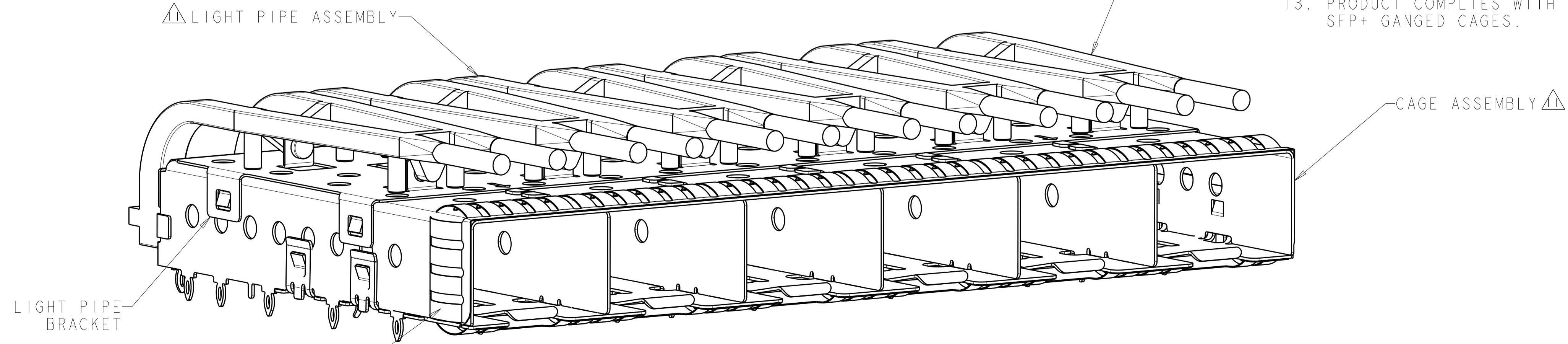


LOC		DIST		REVISIONS			
GP	00	P	LTN	DESCRIPTION	DATE	DWN	APVD
		B		REVISED PER ECO-09-022874	20OCT2009	CR	MS
		C		REVISED PER ECO-10-004036	01MAR2010	CJV	MRS
		D		REVISED PER ECO-11-019224	10JAN2012	TX	AC
		E		REVISED PER ECO-12-014021	05DEC2012	TD	AC



- 1. MATERIAL:
 CAGE ASSEMBLY: 0.25mm THICK NICKEL SILVER ALLOY.
 LIGHT PIPE CLIP: STAINLESS STEEL
 LIGHT PIPE: POLYCARBONATE, CLEAR
- 2. FINISH:
 SPRINGS: MINIMUM OF 0.8um TIN PLATE OVER A MINIMUM OF 0.8um NICKEL UNDERPLATE.
 NON-PLATED EDGES PERMISSIBLE.
- 3. MATES WITH SFP MSA COMPLIANT TRANSCEIVERS.
- 4. PADS AND VIAS CHASSIS GROUND.
- 5. INTERPRETATION OF DATUM REFERENCE FRAME IN ACCORDANCE WITH SECT 4.4.1.1 OF ASME Y14.5M-1994.
- 6. MINIMUM PCB BOARD THICKNESS:
 SINGLE SIDED = 1.50
 DOUBLE SIDED = 2.25
- 7. HOLE PATTERN REPEATS FOR EACH PORT. SPACING BETWEEN PORTS IS 14.25mm.
- 8. DATUM AND BASIC DIMENSION ESTABLISHED BY CUSTOMER.
- 9. REFERENCE APPLICATION SPEC. 114-13120, HOLE A, FOR RECOMMENDED DRILL HOLE DIAMETER AND PLATING THICKNESS.
- 10. REFERENCE APPLICATION SPEC. 114-13120, HOLE B, FOR RECOMMENDED DRILL HOLE DIAMETER AND PLATING THICKNESS.
- 11. LIGHT PIPE ASSEMBLY SHIPPED UNASSEMBLED TO CAGE ASSEMBLY. CAGE ASSEMBLY TO BE PRESSED INTO THE PCB PRIOR TO ATTACHING THE LIGHT PIPE ASSEMBLY TO THE CAGE.
- 12. CERTAIN MATING TRANSCEIVERS MAY REQUIRE ADDITIONAL PCB THICKNESS THAT WOULD NEED TO BE DETERMINED BY THE CUSTOMER.
- 13. PRODUCT COMPLIES WITH SPECIFICATION SFF-8433 IMPROVED PLUGGABLE FORM FACTOR FOR SFP+ GANGED CAGES.

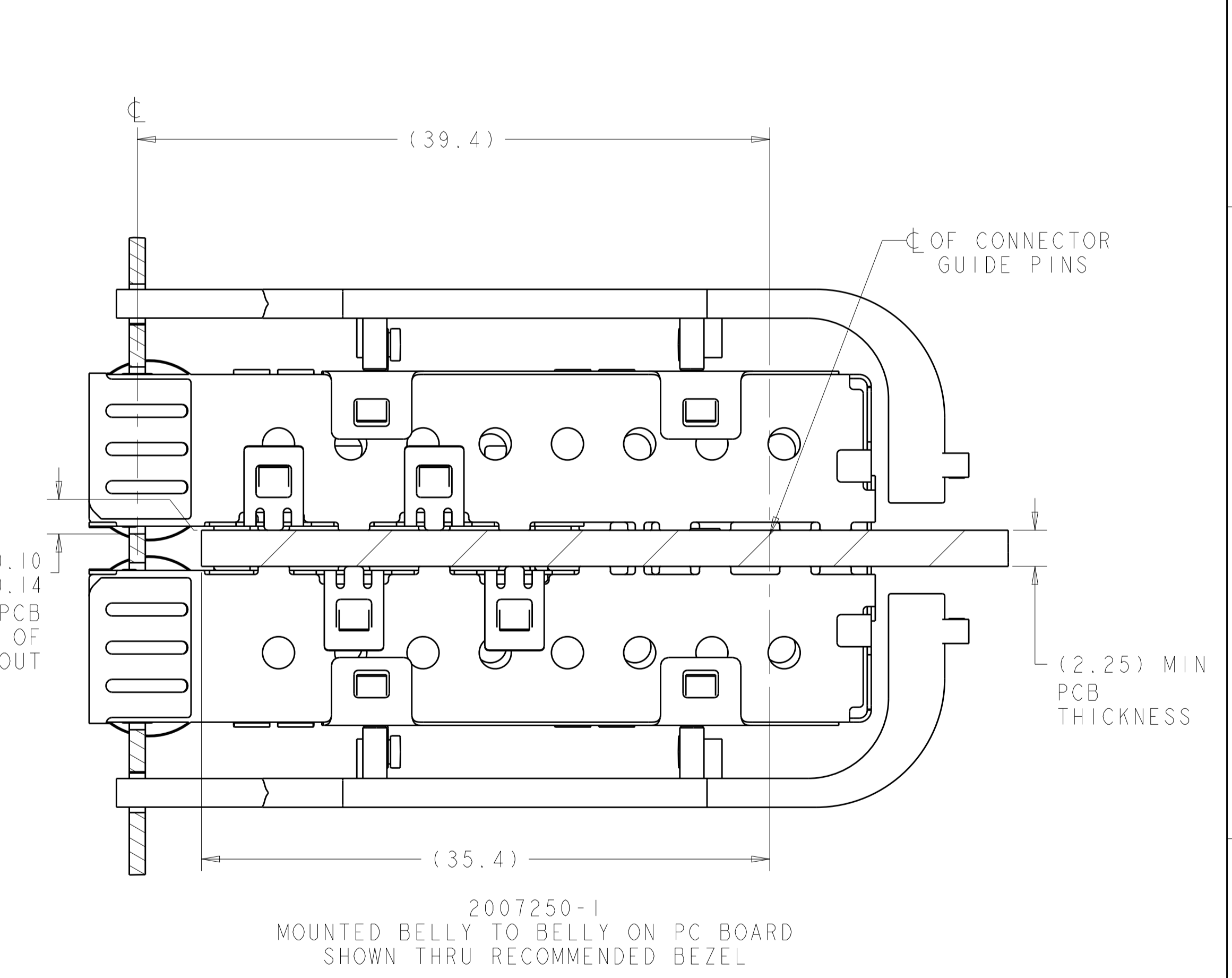
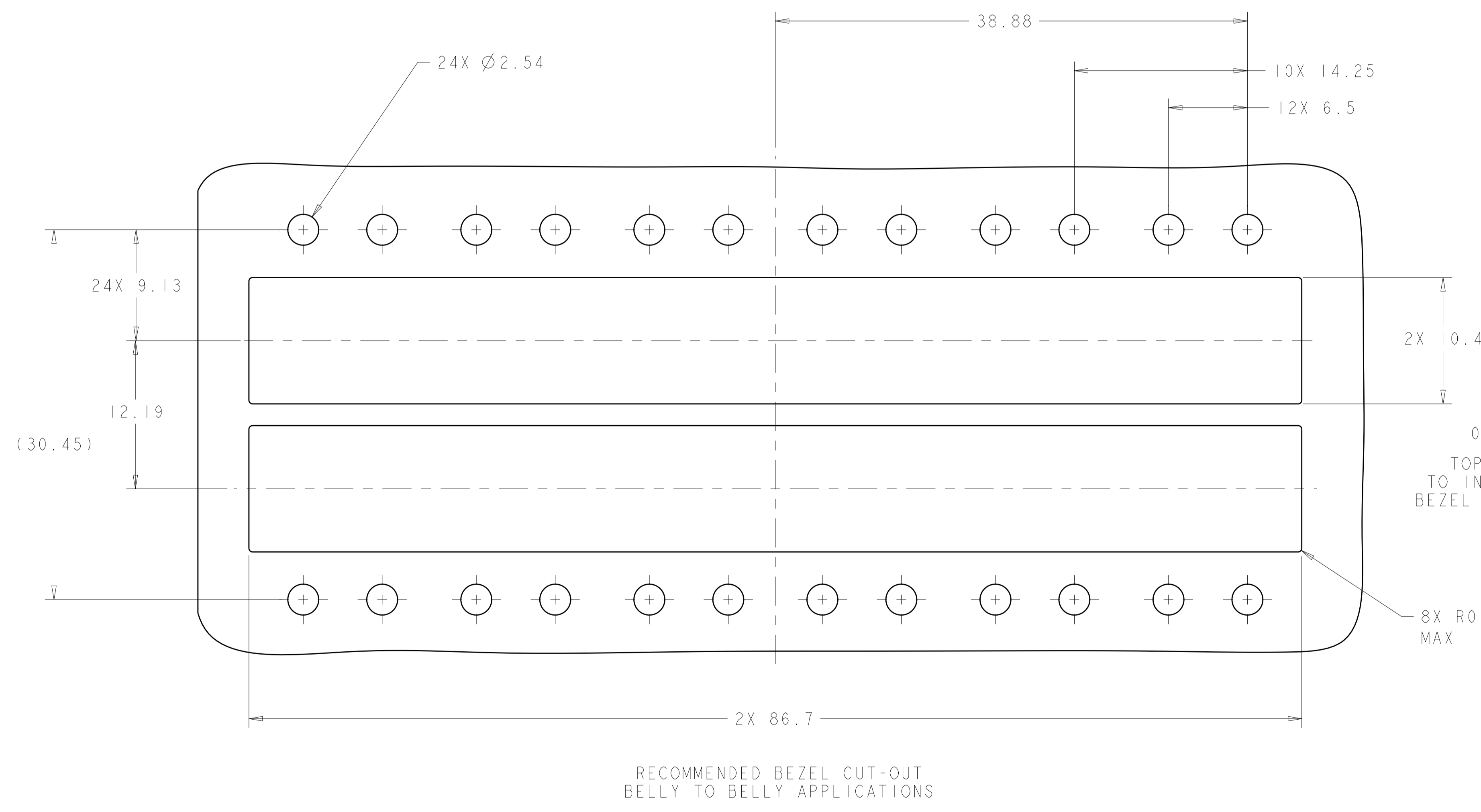
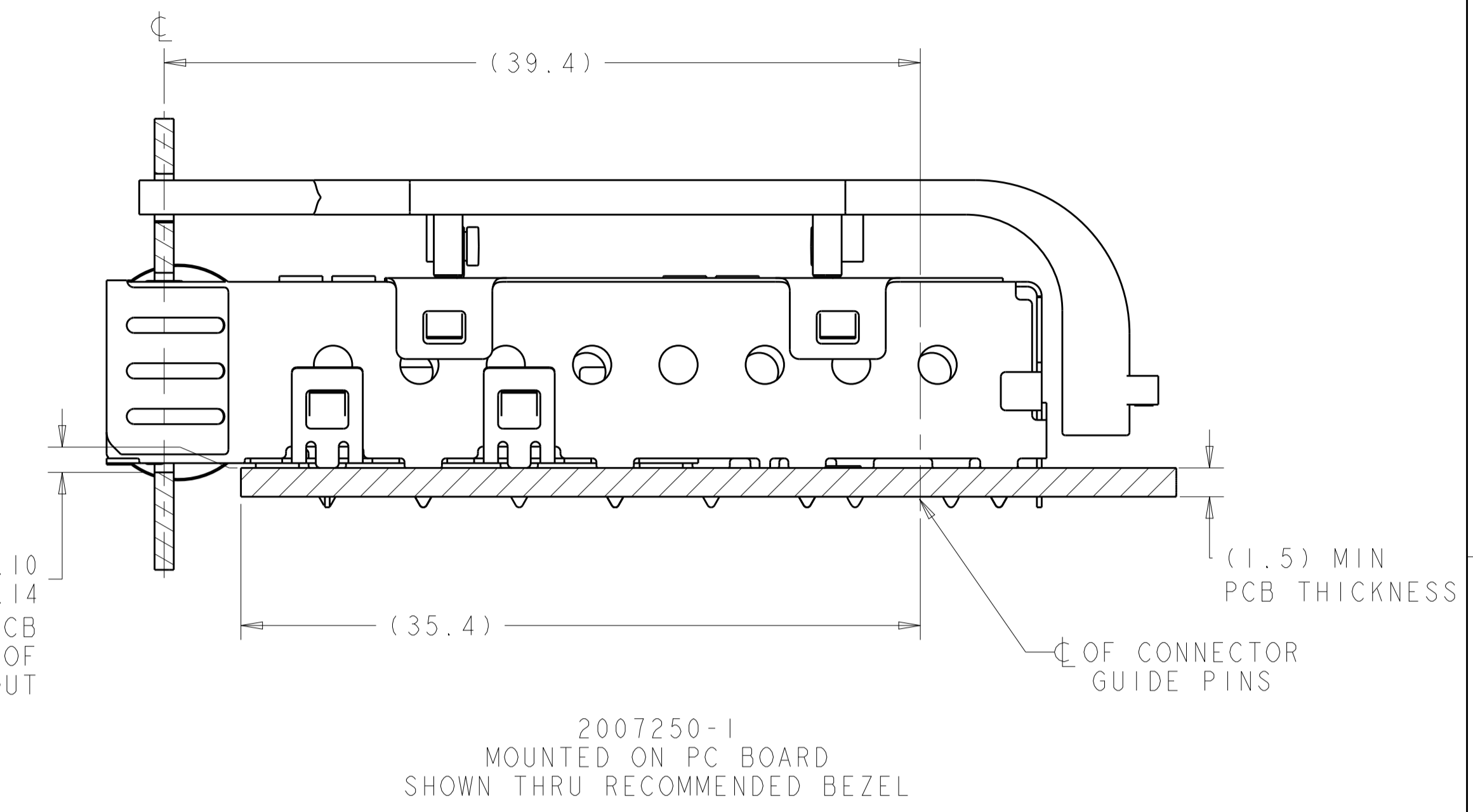
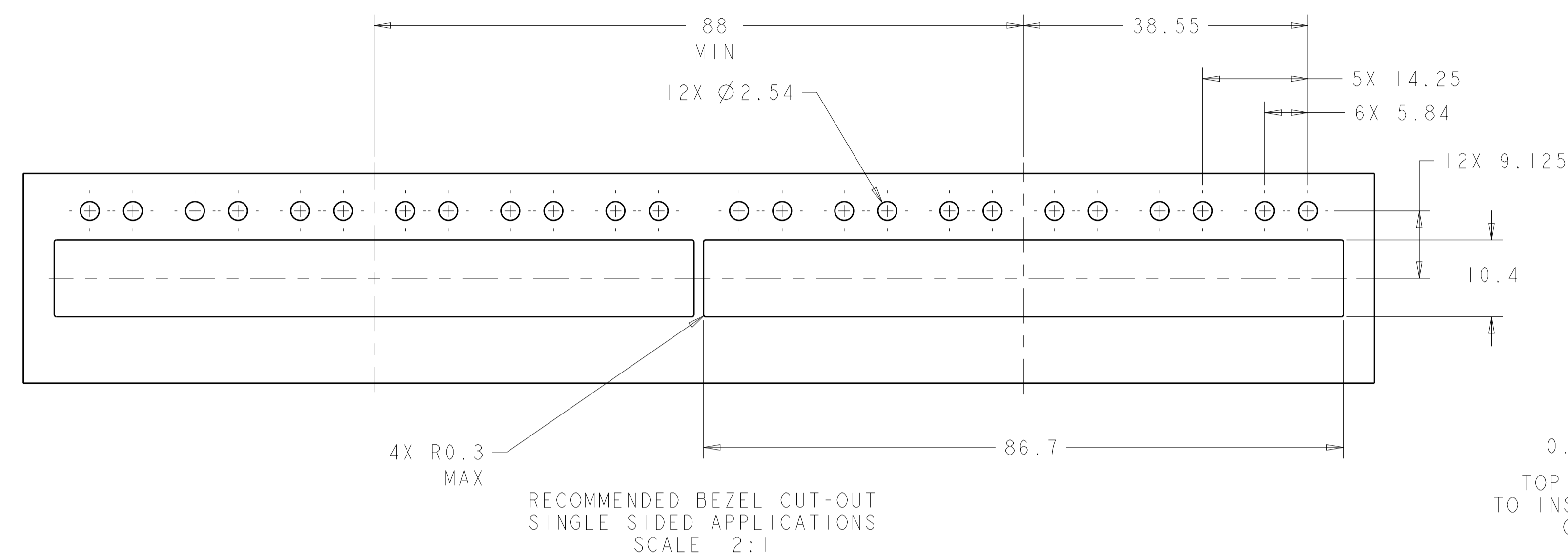


2007250-1
 FINISHED ASSEMBLY
 SCALE 4:1

2007250-1
 PART NUMBER

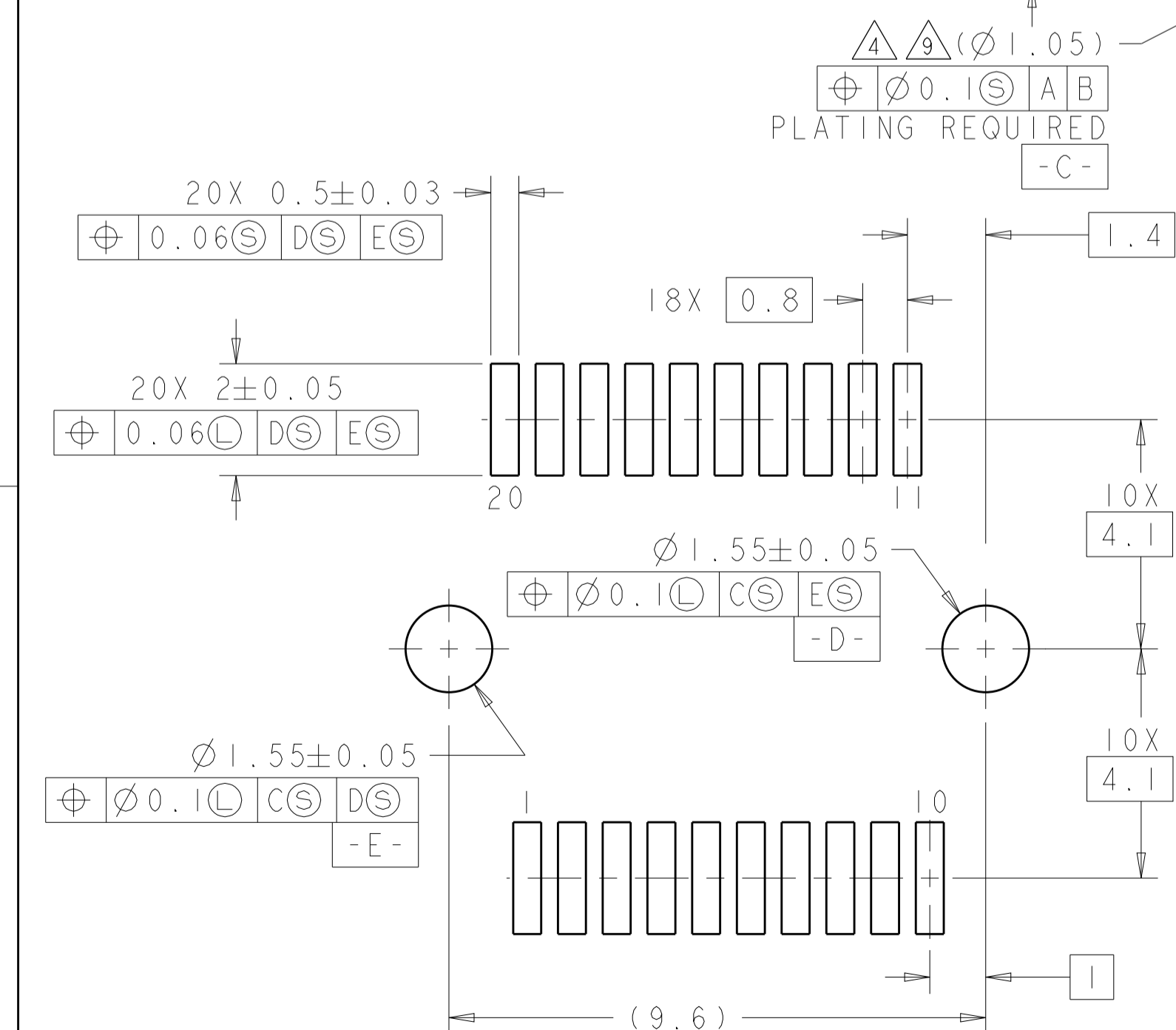
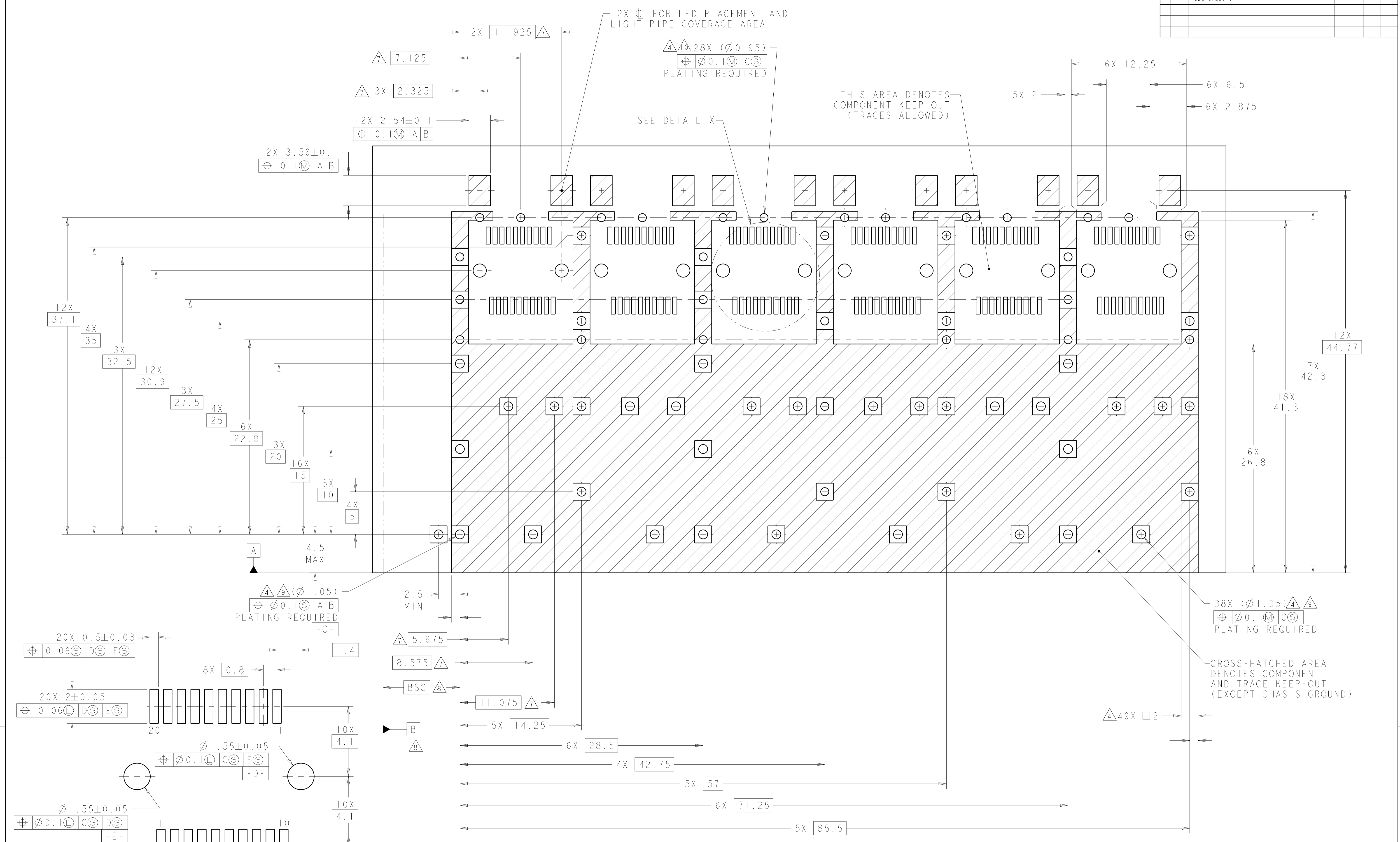
THIS DRAWING IS A CONTROLLED DOCUMENT.		DWN	Z. M. BEAM	17JUL2007	TE Connectivity NAME SFP+ 1X6 CAGE ASSEMBLY PRESS FIT, EXTERNAL EMI SPRINGS WITH LIGHT PIPES
DIMENSIONS:		CHK	M. R. SCHMITT	17JUL2007	
mm		APVD	R. H. WERTZ	17JUL2007	
0 PLC ±0.1 1 PLC ±0.1 2 PLC ±0.1 3 PLC ±0.1 4 PLC ±0.1 ANGLES ±1°		TOLERANCES UNLESS OTHERWISE SPECIFIED:		PRODUCT SPEC 108-2364	
MATERIAL		FINISH		APPLICATION SPEC 114-13120	SIZE A1
▲		▲		WEIGHT	Customer Drawing
				SCALE	4:1
				SHEET	1 OF 4
				REV	E

LOC		DIST		REVISIONS			
GP	00	P	LTN	DESCRIPTION	DATE	OWN	APVD
		-	-	SEE SHEET 1	-	-	-



THIS DRAWING IS A CONTROLLED DOCUMENT.		OWN	Z. M. BEAM	17 JUL 2007	TE Connectivity NAME: SFP+ 1X6 CAGE ASSEMBLY PRESS FIT, EXTERNAL EMI SPRINGS WITH LIGHT PIPES SIZE: CAGE CODE DRAWING NO. RESTRICTED TO A100779 ©=2007250 SCALE: 4:1 SHEET 2 OF 4 REV E
DIMENSIONS:		CHK	M. R. SCHMITT	17 JUL 2007	
mm		APVD	B. H. WERTZ	17 JUL 2007	
TOLERANCES UNLESS OTHERWISE SPECIFIED: 0 PLC ±0.1 2 PLC ±0.1 3 PLC ±0.1 4 PLC ±0.1 ANGLES ±1°		PRODUCT SPEC	108-2364	APPLICATION SPEC	
MATERIAL:		FINISH:	WEIGHT:	114-13120	Customer Drawing

LOC	DIST	REVISIONS			
GP	00	REV	DATE	BY	APPV
		1	SEE SHEET 1		

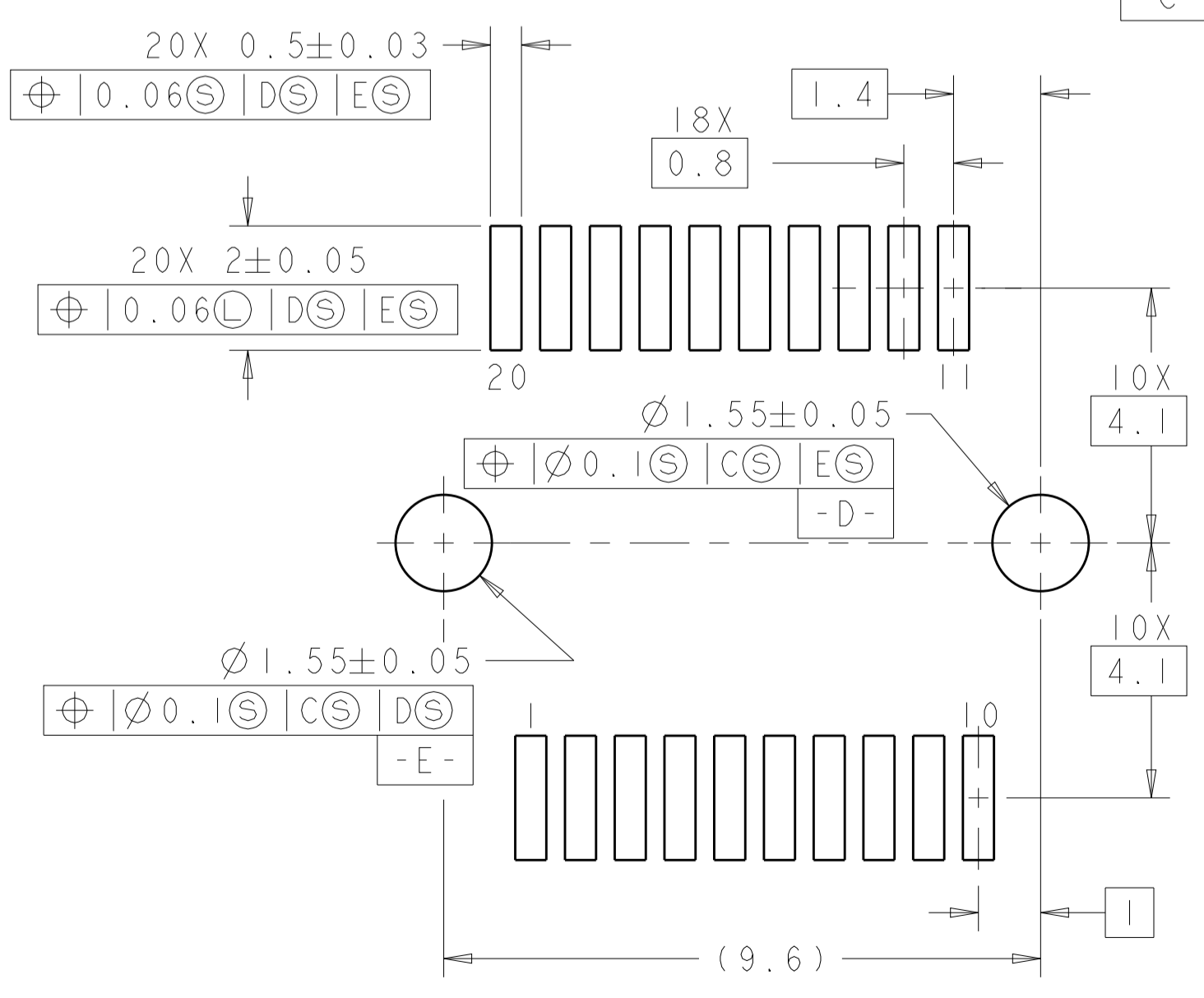
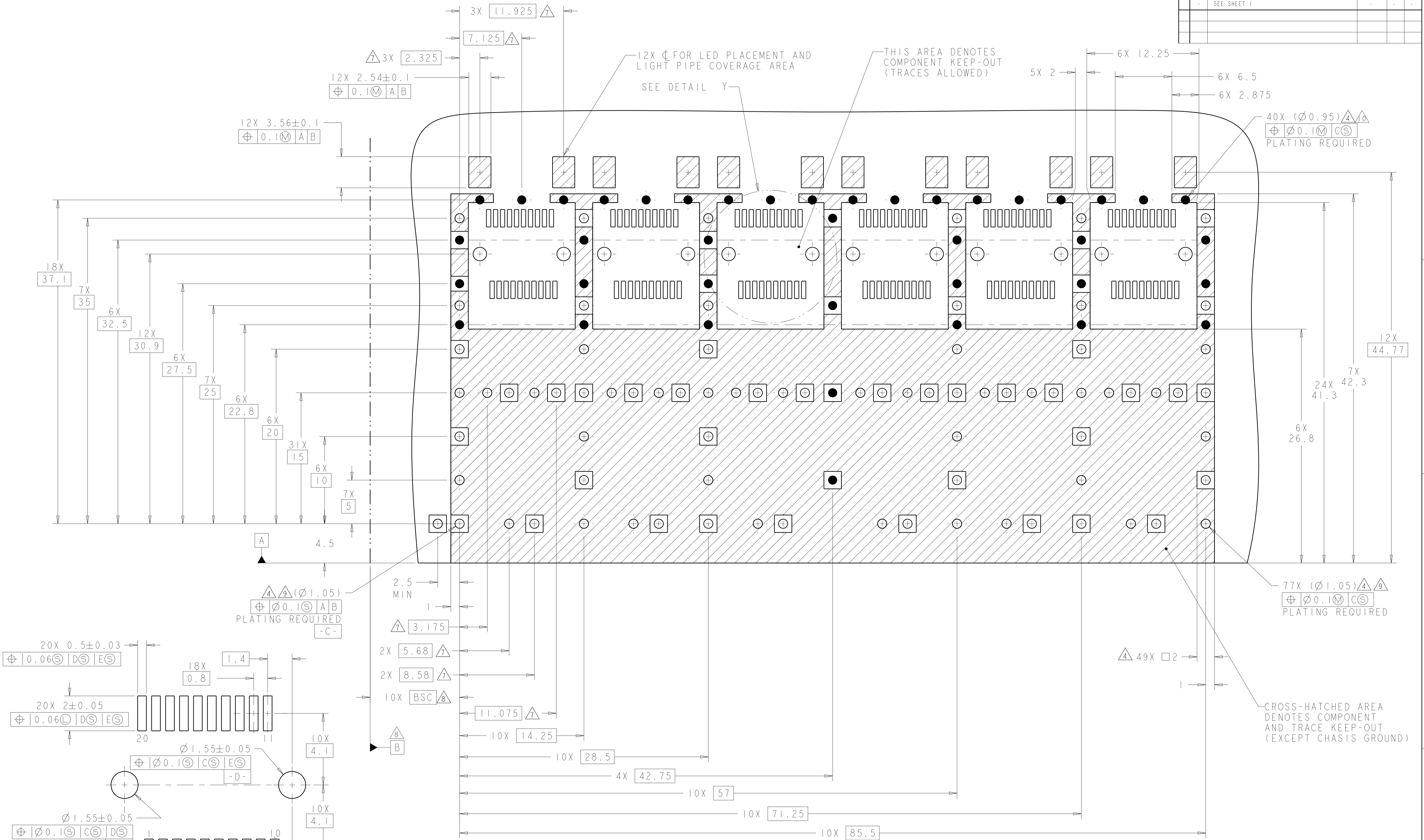


RECOMMENDED PCB CONFIGURATION WITH KEEP-OUT AREAS SINGLE SIDED APPLICATIONS Δ SCALE 5:1

THIS DRAWING IS A CONTROLLED DOCUMENT.		OWN: Z.M.BEAM 17JUL2007	 TE Connectivity
DIMENSIONS: mm		CHK: M.B.SCHMITT 17JUL2007	
TOLERANCES UNLESS OTHERWISE SPECIFIED:		APVD: B.H.WERTZ 17JUL2007	NAME: SFP+ 1X6 CAGE ASSEMBLY PRESS FIT, EXTERNAL EMI SPRINGS WITH LIGHT PIPES
0 PLC ± 0.1 1 PLC ± 0.1 2 PLC ± 0.1 3 PLC ± 0.1 4 PLC ± 0.1 ANGLES ± 0.1		PRODUCT SPEC: 108-2364	SIZE: CAGE CODE DRAWING NO: A100779
MATERIAL: FINISH: $\pm 1^{\circ}$		APPLICATION SPEC: 114-13120	RESTRICTED TO: -
Customer Drawing		WEIGHT: -	SCALE: 4:1 SHEET 3 OF 4 REV E

LOC	DIST	REV	DATE	BY	APPD
GP	00				

REVISIONS			
NO.	DESCRIPTION	DATE	BY
1	SEE SHEET 1		



RECOMMENDED PC BOARD CONFIGURATION
 WITH KEEP-OUT AREAS
 BELLY TO BELLY APPLICATIONS Δ
 SCALE 5:1

THIS DRAWING IS A CONTROLLED DOCUMENT.		OWN Z. M. BEAM 17 JUL 2007	TE Connectivity NAME SFP+ 1X6 CAGE ASSEMBLY PRESS FIT, EXTERNAL EMI SPRINGS WITH LIGHT PIPES
DIMENSIONS:		CHK M. R. SCHMITT 17 JUL 2007	
mm	TOLERANCES UNLESS OTHERWISE SPECIFIED:	APVD R. H. WERTZ 17 JUL 2007	PRODUCT SPEC 108-2364
	0 PLC \pm 0.1		APPLICATION SPEC
	1 PLC \pm 0.1		114-13120
	2 PLC \pm 0.1		WEIGHT
	3 PLC \pm 0.1		Customer Drawing
	4 PLC \pm 0.1		SCALE 4:1
	ANGLES \pm 0.1		SHEET 4 OF 4
MATERIAL	FINISH		REV E